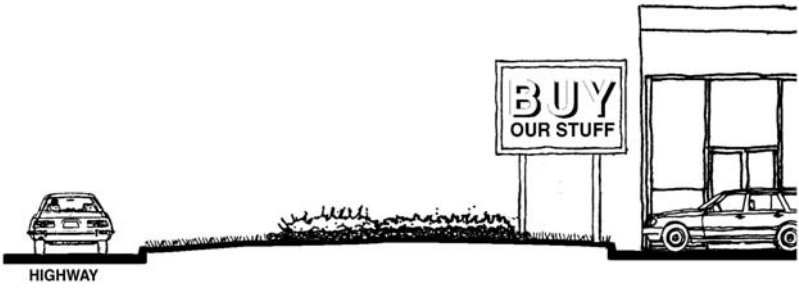


# TYPE P

# TYPICAL LANDSCAPE CORRIDOR TREATMENT CONCEPTUAL VEGETATION TYPES



## SHORT EVERGREEN SHRUBS

### PURPOSE

Shortness of shrubs allows visibility of signs, businesses and sight corners, used where safety is a concern, year round color, formal appearance, provides softening in hardscape areas

### SUGGESTED SPECIES

Shrubs: low spreading junipers, cypress yucca, globe arborvitae, and japanese spurge

### APPROX. SIZE & SPACING

12" = 18" Ht.  
3' - 5' O.C.

