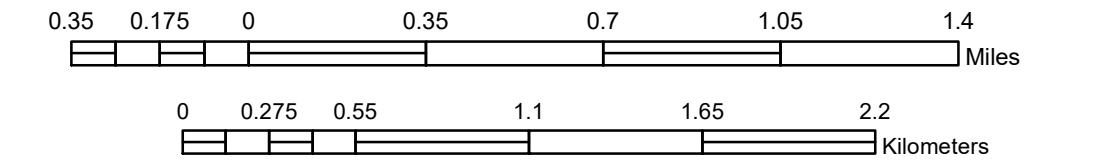


MUNICIPALITY OF BEMIDJI

PREPARED BY THE
MINNESOTA DEPARTMENT OF TRANSPORTATION
OFFICE OF TRANSPORTATION SYSTEM MANAGEMENT

IN COOPERATION WITH
U.S. DEPARTMENT OF TRANSPORTATION
FEDERAL HIGHWAY ADMINISTRATION

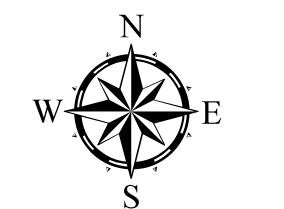
SCALE



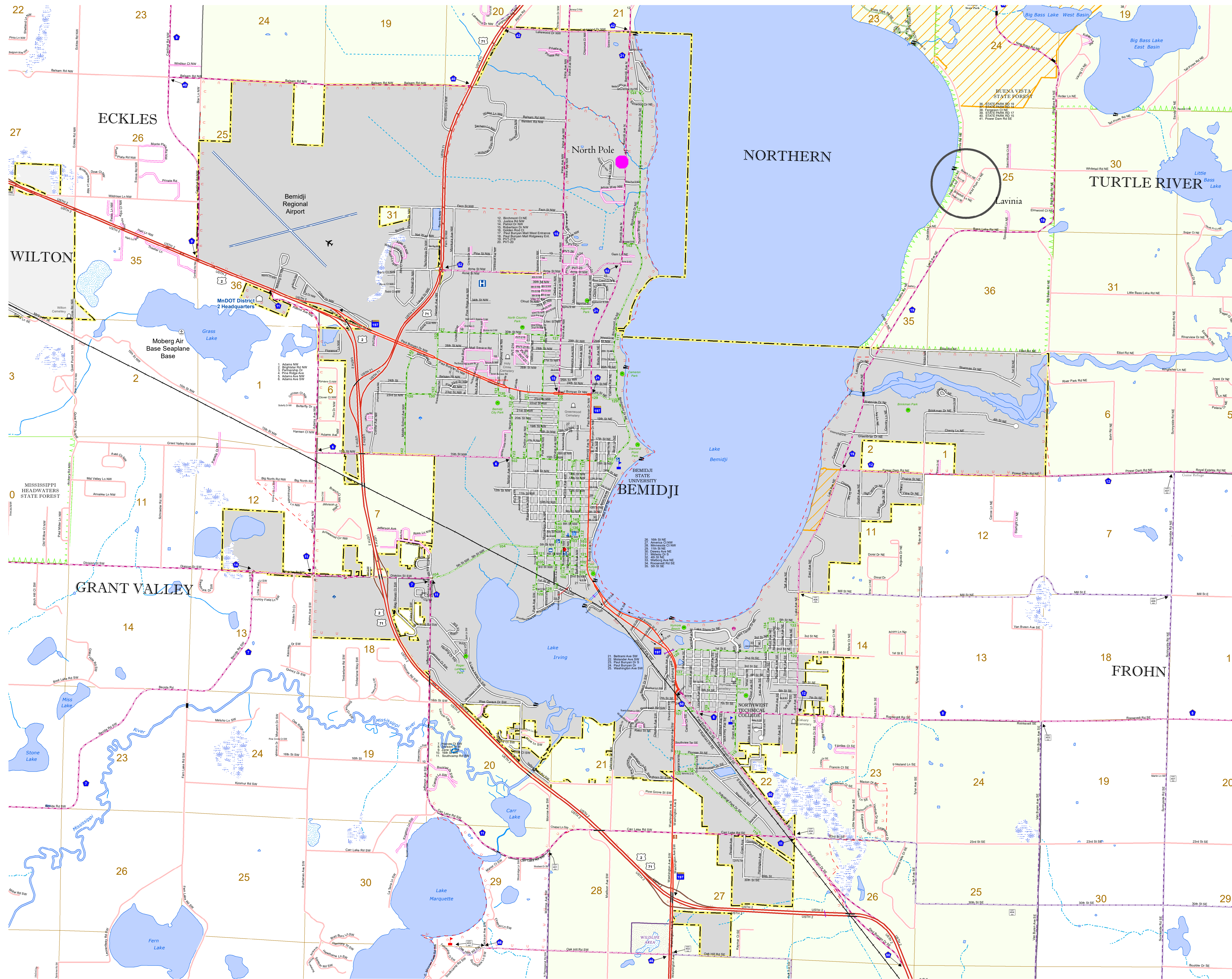
1 in = 2,000 ft

2023

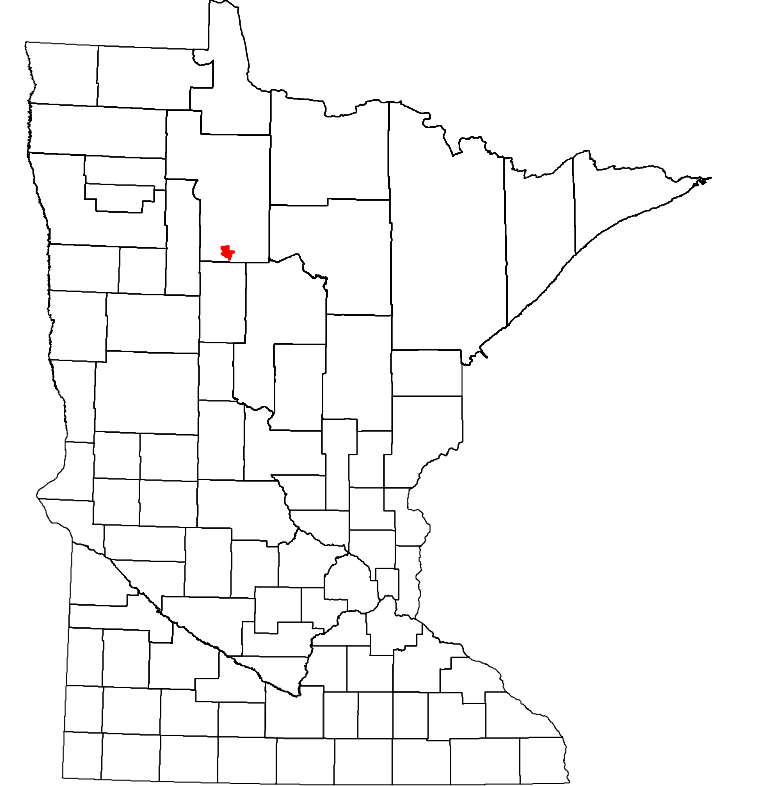
Projection:
Transverse Mercator
NAD 1986
UTM Zone 15



North American Datum
of 1986



ROAD AND ROADWAY FEATURES	PUBLIC SERVICE FEATURES
INTERSTATE	MNDOT OFFICE
US HIGHWAY	MNDOT TRUCK STATION
MN HIGHWAY	HIGHWAY PATROL DISTRICT OFFICE
COUNTY STATE AID HIGHWAY	STATE TRAVEL INFORMATION CENTER
COUNTY ROAD	REST AREA (FULL SERVICE)
MUNICIPAL STREET	REST AREA (VAULT TRAILS)
MUNICIPAL STATE AID STREET	WAYSIDE (VAULT OR PIT TONNAGE)
PRIVATE STREET/ROAD	PUBLIC ACCESS POINT
TOWNSHIP ROAD	LOCAL PARK
UNORGANIZED TERRITORY ROAD	FAIRGROUNDS
RAMP OR CONNECTOR	POINT OF ENTRY
INTERSTATE EXIT	PARK AND RIDE LOT
GREAT RIVER ROAD	PUBLIC UNIVERSITY/COLLEGE
OTHER ROAD	PRIVATE UNIVERSITY/COLLEGE
FRONTAGE ROAD	ELEMENTARY SCHOOL
NATIONAL PARK	MIDDLE SCHOOL
NATIONAL FOREST	HIGH SCHOOL
MUNICIPAL	AVIATION FEATURES
RAILROAD AND RAILWAY FEATURES	COMMERCIAL AIRPORT
EMPIRE BUILDER STATION (AMTRAK)	GENERAL AIRPORT
NORTHSTAR STATION (COMMUTER)	AIRSTRIP
LIGHT RAIL	SEAPLANE
BLUE LINE STATION	AIRPORT RUNWAY
GREEN LINE STATION	CULTURAL FEATURES
INFRASTRUCTURE FEATURES	STATE HISTORICAL MARKER
LONG BRIDGE (100' OR GREATER SPAN)	HISTORIC DISTRICT
MAJOR BRIDGE (20' TO 100' SPAN)	HISTORIC SITE
MINOR BRIDGE (5' TO 20' SPAN)	MONUMENT
ROAD TUNNEL (100' OR GREATER SPAN)	CEMETERY
RAILROAD BRIDGE (100' OR GREATER SPAN)	BOUNDARY FEATURES
RAILROAD BRIDGE (UNDER 100' SPAN)	TRIBAL LAND
SKYWAY	COUNTY
PEDESTRIAN BRIDGE	MUNICIPALITY
PEDESTRIAN TUNNEL	ADJACENT MUNICIPALITY
DAM	FEDERAL ADJUSTED URBAN AREA (2014)
LOCK AND DAM	MILITARY
PUBLIC FACILITIES	STATE PARK
FEDERAL CAPITOL	REGIONAL PARK
FEDERAL COURTHOUSE	NATIONAL FOREST
COUNTY COURTHOUSE	NATIONAL AND STATE FOREST
CITY HALL	STATE FOREST
TOWN HALL	NATIONAL TRAIL
COMMUNITY CENTER	WILDLIFE REFUGUE AREA
ARENA	WILDLIFE MANAGEMENT AREA
STADIUM	HYDROLOGIC FEATURES
POST OFFICE	RIVER OR STREAM (PERENNIAL)
POLICE STATION	LAKE, POND OR RESERVOIR
FIRE STATION	STREAM (INTERMITTENT)
PUBLIC LIBRARY	DRAINAGE DITCH
PUBLIC MUSEUM	WETLAND
EVENT CENTER	ISLAND OR LAND
CITY CENTERS	REGIONAL WATERSHED
TRIBAL GOVERNMENT CENTER	
CITY CENTER	
LOCALLY KNOWN PLACE	
UNINCORPORATED COMMUNITY	



LAST EDITED ON 1-29-2024

Population (U.S. Census 2020): 14,574

To request information from this document in an alternative format, call 651-366-4718 or 1-800-657-3774 (Greater Minnesota); 711 or 1-800-627-3529 (Minnesota Relay). You may also send an e-mail to ADarequest.dot@state.mn.us. (Please request at least one week in advance.)