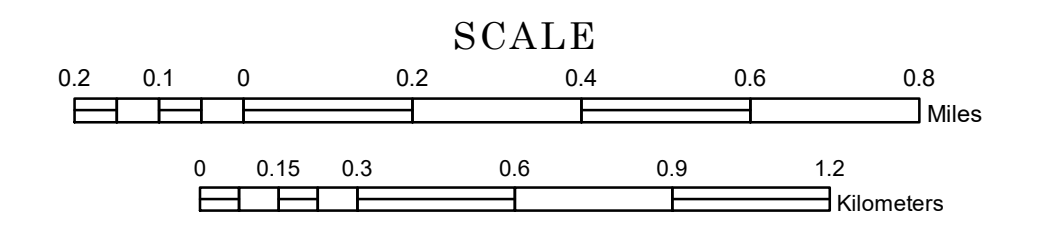


# MUNICIPALITY OF REDWOOD FALLS

PREPARED BY THE  
MINNESOTA DEPARTMENT OF TRANSPORTATION  
OFFICE OF TRANSPORTATION SYSTEM MANAGEMENT

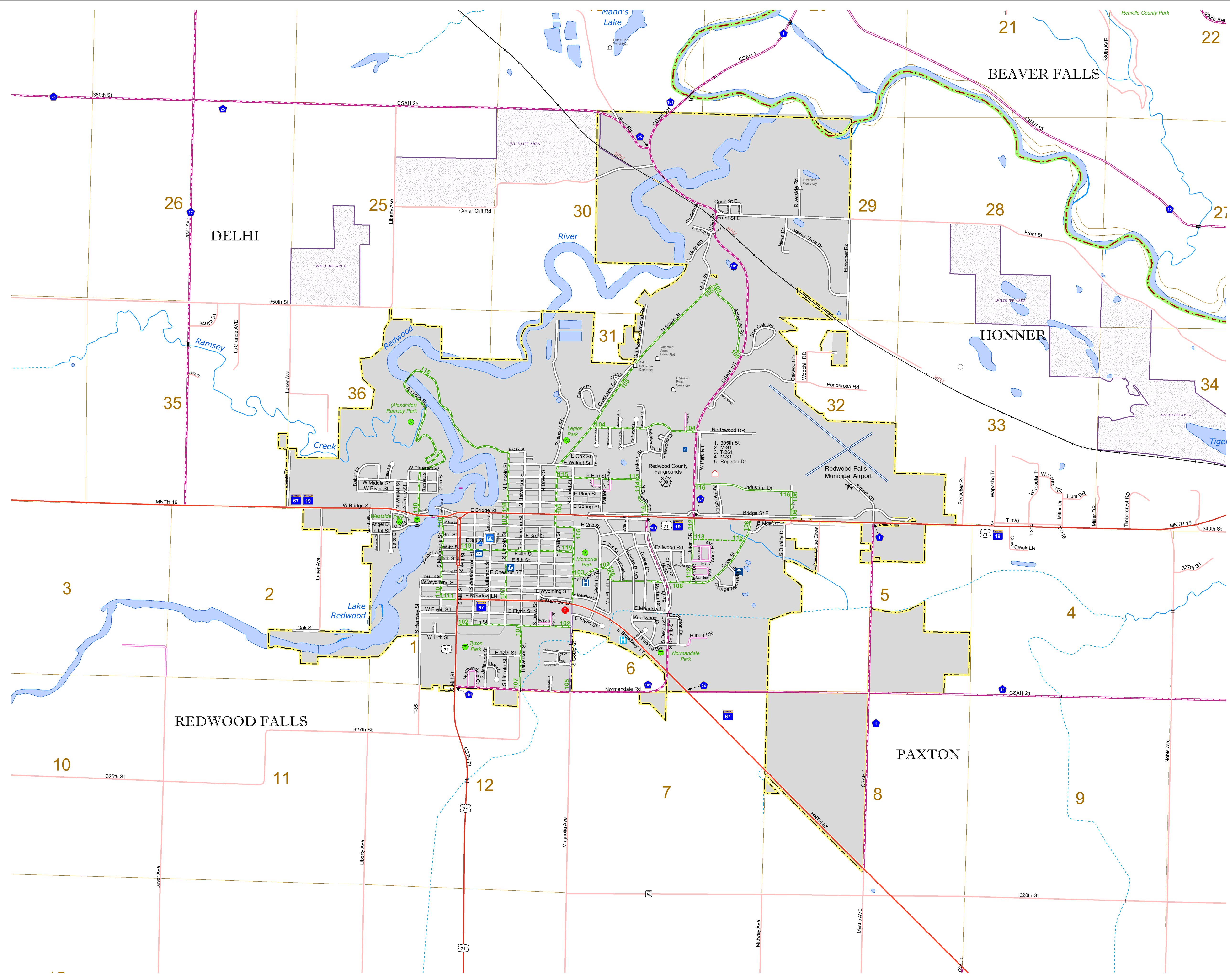
IN COOPERATION WITH  
U.S. DEPARTMENT OF TRANSPORTATION  
FEDERAL HIGHWAY ADMINISTRATION



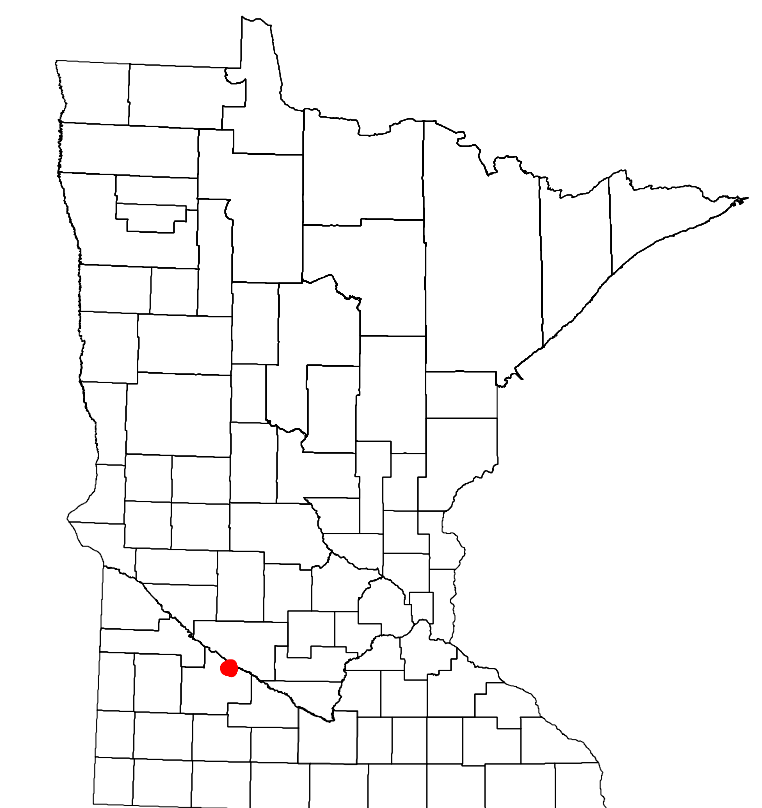
2023

Projection:  
Transverse Mercator  
NAD 1986  
UTM Zone 15

North American Datum  
of 1986



ROAD AND ROADWAY FEATURES	PUBLIC SERVICE FEATURES
INTERSTATE	MINOT OFFICE
US HIGHWAY	MINOT TRUCK STATION
STATE AID HIGHWAY	HIGHWAY PATROL DISTRICT OFFICE
COUNTY ROAD	STATE TRAVEL INFORMATION CENTER
MUNICIPAL STREET	REST AREA (Full Service)
MUNICIPAL STATE AID STREET	REST AREA (Fast Truck)
PRIVATE STREET/ROAD	WAYSIDE (Only on Pkwy/Trkwy)
UNORGANIZED TERRITORY ROAD	PUBLIC ACCESS POINT
RAMP OR CONNECTOR	FARMS/ROADS
INTERSTATE EXIT	PORT OF ENTRY
GREAT RIVER ROAD	PARK AND RIDE LOT
OTHER ROAD	PUBLIC UNIVERSITY/COLLEGE
FARMROAD	PRIVATE UNIVERSITY/COLLEGE
NATURAL FOREST	ELEMENTARY SCHOOL
MILITARY	MIDDLE SCHOOL
	HIGH SCHOOL
RAILROAD AND RAILWAY FEATURES	AVIATION FEATURES
EMPIRE BUILDER STATION (AIRPORT)	COMMERCIAL AIRPORT
NORTHWEST STATION (COMMUTER)	GENERAL AIRPORT
LIGHT RAIL	ARSTRIP
BLUE LINE STATION	SEAPLANE
GREEN LINE STATION	AIRPORT RUNWAY
INFRASTRUCTURE FEATURES	CULTURAL FEATURES
LONG BRIDGE (100' OR GREATER SPAN)	STATE HISTORICAL MARKER
MEDIUM BRIDGE (20' TO 100' SPAN)	HISTORIC DISTRICT
ROAD TUNNEL (100' OR GREATER SPAN)	HISTORIC SITE
RAILROAD BRIDGE (100' OR GREATER SPAN)	MONUMENT
RAILROAD BRIDGE (LESSER THAN 100' SPAN)	CEMETERY
SKYWAY	TRIBAL LAND
PEDESTRIAN BRIDGE	COUNTY
PEDESTRIAN TUNNEL	MUNICIPALITY
LOCK AND DAM	ADJACENT MUNICIPALITY
	FEDERAL ADJUSTED URBAN AREA (2014)
PUBLIC FACILITIES	MILITARY
STATE CAPITOL	STATE PARK
FEDERAL COURTHOUSE	REGIONAL PARK
COUNTY COURTHOUSE	NATIONAL FOREST
ARMORY	NATIONAL AND STATE FOREST
CITY HALL	STATE FOREST
COMMUNITY CENTER	NATIONAL TRAIL
ARENA	WILDLIFE REFUGE AREA
STADIUM	WILDLIFE MANAGEMENT AREA
POST OFFICE	HYDROLOGIC FEATURES
POLICE STATION	RIVER OR STREAM (PERMANENT)
FIRE STATION	LAKE, POND OR RESERVOIR
PUBLIC LIBRARY	STREAM (PERMANENT)
PUBLIC MUSEUM	DRAINAGE DITCH
EVENT CENTER	WETLAND
	ISLAND OR LAND
CITY CENTERS	REGIONAL WATERSHED
TRIBAL GOVERNMENT CENTER	
CITY CENTER	
LOCALLY INCORPORATED PLACE	
UNINCORPORATED COMMUNITY	



LAST EDITED ON 12-07-2023

Population (U.S. Census 2020): 5102

To request information from this document in an alternative format, call 651-366-4718 or 1-800-657-3774 (Greater Minnesota); 711 or 1-800-627-3529 (Minnesota Relay). You may also send an e-mail to ADArequest.dot@state.mn.us. (Please request at least one week in advance.)