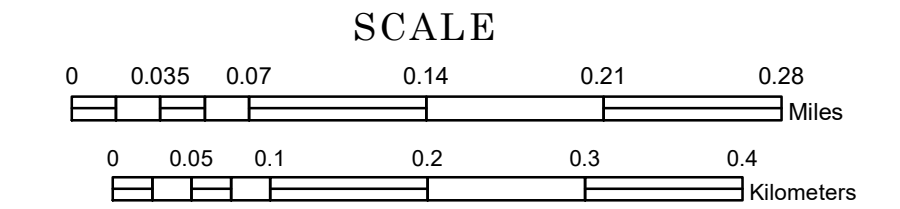


MUNICIPALITY OF SAINT CLOUD

PREPARED BY THE
MINNESOTA DEPARTMENT OF TRANSPORTATION
OFFICE OF TRANSPORTATION SYSTEM MANAGEMENT

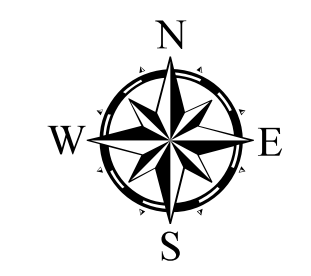
IN COOPERATION WITH
U.S. DEPARTMENT OF TRANSPORTATION
FEDERAL HIGHWAY ADMINISTRATION



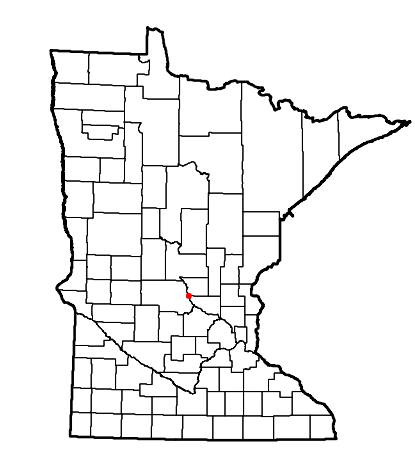
1 in = 400 ft
2024

Projection:
Transverse Mercator
NAD 1986
UTM Zone 15

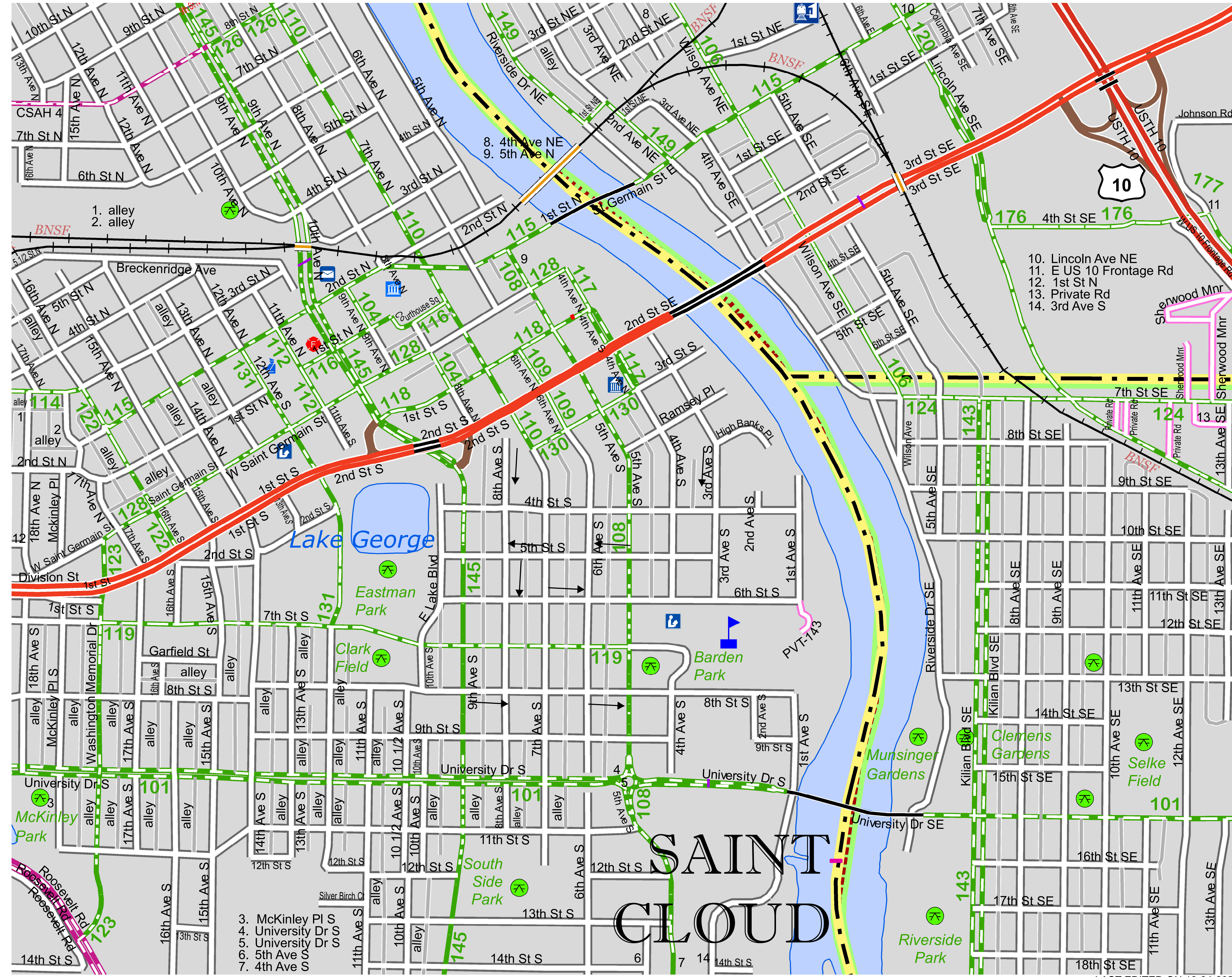
North American Datum
of 1986



ROAD AND ROADWAY FEATURES	PUBLIC SERVICE FEATURES
INTERSTATE	MNDOT OFFICE
US HIGHWAY	MNDOT TRUCK STATION
EN ROUTE HIGHWAY	HIGHWAY PATROL DISTRICT OFFICE
COUNTY STATE AID HIGHWAY	STATE TRAVEL INFORMATION CENTER
COUNTY ROAD	REST AREA (FULL SERVICE)
MUNICIPAL STREET	REST AREA (VARIABLE TOLL)
MUNICIPAL STATE AID STREET	WAYSIDE (WALK OR BIKE TOILET)
PRIVATE STREET ROAD	PUBLIC ACCESS POINT
TOWNSHIP ROAD	LOCAL PARK
UNORGANIZED TERRITORY ROAD	FAIRGROUNDS
RAMP OR CONNECTOR	PORT OF ENTRY
GREAT RIVER ROAD	PARK AND RIDE LOT
INTERSTATE EXIT	PUBLIC UNIVERSITY COLLEGE
OTHER ROADS:	PRIVATE UNIVERSITY COLLEGE
Facilities	Elementary School
Business	Middle School
Military	High School
RAILROAD AND RAILWAY FEATURES	AVIATION FEATURES
EMPIRE BUILDER STATION (AIRRAIL)	COMMERCIAL AIRPORT
UNION-STAR STATION (COMRAIL)	GENERAL AIRPORT
LIGHT RAIL	AIRSTRIP
BLUE LINE STATION	SEAPLANE
GREEN LINE STATION	AIRPORT RUNWAY
INFRASTRUCTURE FEATURES	CULTURAL FEATURES
LONGS BRIDGE (100' OR GREATER SPAN)	STATE HISTORICAL MARKER
MAJOR BRIDGE (20' TO 100' SPAN)	HISTORIC DISTRICT
MINOR BRIDGE (0' TO 20' SPAN)	HISTORIC SITE
ROAD TUNNEL (100' OR GREATER SPAN)	MONUMENT
RAILROAD BRIDGE (100' OR GREATER SPAN)	CEMETERY
RAILROAD BRIDGE (LESSER 100' SPAN)	BOUNDARY FEATURES
SKYWAY	TRIBAL LAND
PEDESTRIAN BRIDGE	COUNTY
PEDESTRIAN TUNNEL	MUNICIPALITY
LOCK AND DAM	ADJACENT MUNICIPALITY
STATE CAPITAL	FEDERAL ADJUSTED URBAN AREA (OIA)
FEDERAL COURTHOUSE	MILITARY
COUNTY COURTHOUSE	STATE PARK
ARMORY	REGIONAL PARK
CITY HALL	NATIONAL FOREST
COINQUINITY CENTER	NATIONAL AND STATE FOREST
ARENA	STATE FOREST
STADIUM	NATIONAL TRAIL
POST OFFICE	WILDLIFE REFUGE AREA
POLICE STATION	WILDLIFE MANAGEMENT AREA
FIRE STATION	HYDROLOGIC FEATURES
PUBLIC LIBRARY	LAKE, POND OR RESERVOIR
PUBLIC MUSEUM	STREAM (INTERMITTENT)
EVENT CENTER	STREAM (PERMANENT)
TRIBAL GOVERNMENT CENTER	DRAINAGE DITCH
CITY CENTER	WETLAND
LOCALLY INCORPORATED PLACE	ISLAND OR LAND
UNINCORPORATED COMMUNITY	REGIONAL WATERSHED



Population (U.S. Census 2020): 68,881



3. McKinley Pl S
4. University Dr S
5. University Dr S
6. 5th Ave S
7. 4th Ave S

10. Lincoln Ave NE
11. E US 10 Frontage Rd
12. 1st St N
13. Private Rd
14. 3rd Ave S

SAINT CLOUD

To request information from this document in an alternative format, call 651-366-4718 or 1-800-657-3774 (Greater Minnesota); 711 or 1-800-627-3529 (Minnesota Relay). You may also send an e-mail to ADRequest.dot@state.mn.us. (Please request at least one week in advance.)

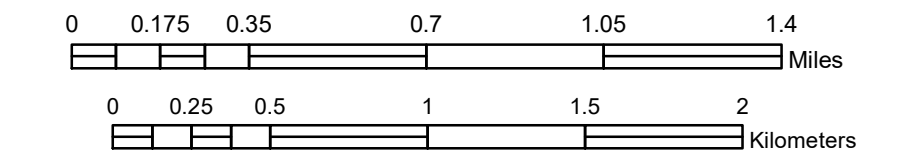
LAST EDITED ON 12-24-2024

MUNICIPALITY OF SAINT CLOUD

PREPARED BY THE
MINNESOTA DEPARTMENT OF TRANSPORTATION
OFFICE OF TRANSPORTATION SYSTEM MANAGEMENT

IN COOPERATION WITH
U.S. DEPARTMENT OF TRANSPORTATION
FEDERAL HIGHWAY ADMINISTRATION

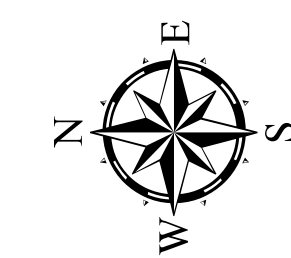
SCALE



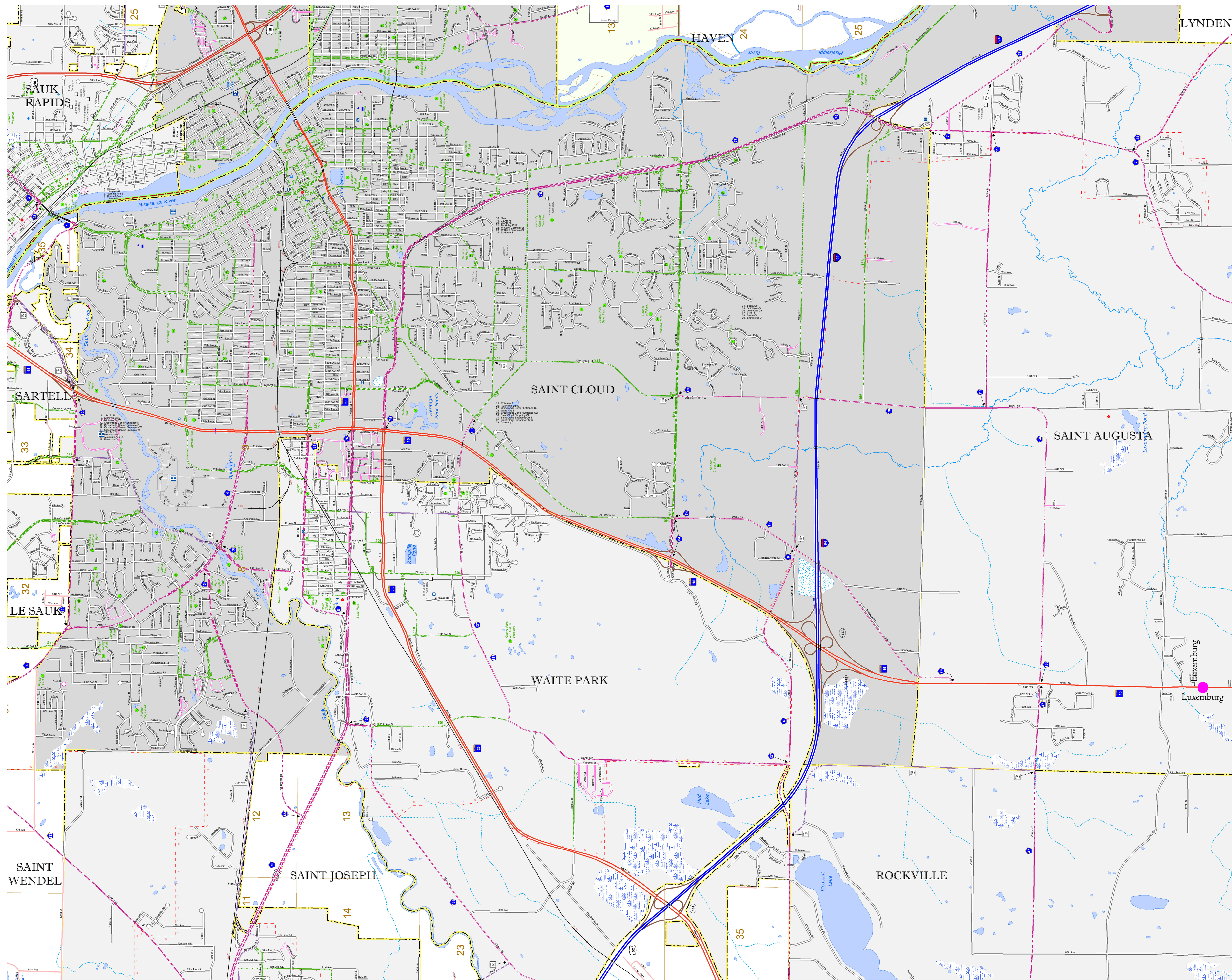
1 in = 2,000 ft

2024

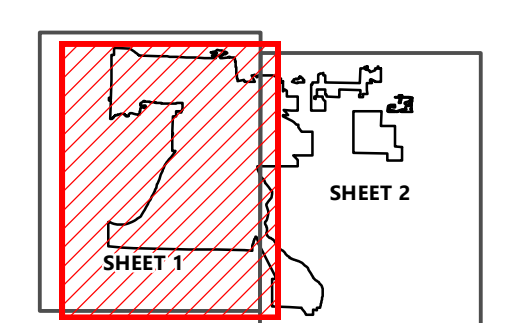
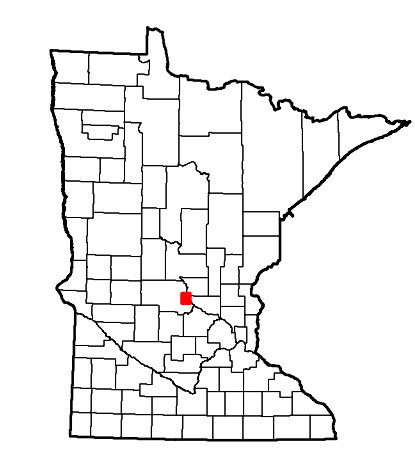
Projection:
Transverse Mercator
NAD 1986
UTM Zone 15



North American Datum
of 1986



ROAD AND ROADWAY FEATURES	PUBLIC SERVICE FEATURES
INTERSTATE	MNDOT OFFICE
US HIGHWAY	MNDOT TRUCK STATION
MIN HIGHWAY	HIGHWAY PATROL DISTRICT OFFICE
COUNTY STATE AID HIGHWAY	STATE TRAVEL INFORMATION CENTER
COUNTY ROAD	REST AREA (FULL SERVICE)
MUNICIPAL STREET	REST AREA (VARIABLE TOLL)
MUNICIPAL STATE AID STREET	WAYSIDE (WALK OR BIKE TOILET)
PRIVATE STREET ROAD	PUBLIC ACCESS POINT
TOWNSHIP ROAD	LOCAL PARK
UNORGANIZED TERRITORY ROAD	FARMSHOUSES
RAMP OR CONNECTOR	PORT OF ENTRY
INTERSTATE EXIT	PARK AND RIDE LOT
GREAT RIVERS ROAD	PUBLIC UNIVERSITY COLLEGE
OTHER ROADS	PRIVATE UNIVERSITY COLLEGE
Facilities	Elementary School
State Park	Middle School
National	High School
Monument	
National Forest	
National Wildlife State Game	
Military	
RAILROAD AND RAILWAY FEATURES	AVIATION FEATURES
EMPIRE BUILDER STATION (AIR/RAIL)	COMMERCIAL AIRPORT
NORTH STAR STATION (COMMUTER)	GENERAL AIRPORT
LIGHT RAIL	AIRSTRIP
BLUE LINE STATION	SEAPLANE
GREEN LINE STATION	AIRPORT RUNWAY
INFRASTRUCTURE FEATURES	CULTURAL FEATURES
LONGS BRIDGE (100' OR GREATER SPAN)	STATE HISTORICAL MARKER
MAJOR BRIDGE (20' TO 100' SPAN)	HISTORIC DISTRICT
MINOR BRIDGE (0' TO 20' SPAN)	HISTORIC SITE
ROAD TUNNEL (100' OR GREATER SPAN)	MONUMENT
RAILROAD BRIDGE (100' OR GREATER SPAN)	CEMETERY
RAILROAD BRIDGE (UNDER 100' SPAN)	
SKYWAY	BOUNDARY FEATURES
PEDESTRIAN BRIDGE	TRIBAL LAND
PEDESTRIAN TUNNEL	COUNTY
DAM	MUNICIPALITY
LOCK AND DAM	ADJACENT MUNICIPALITY
	FEDERAL ADJUSTED URBAN AREA (FAUA)
	MILITARY
	STATE PARK
	REGIONAL PARK
	NATIONAL FOREST
	NATIONAL AND STATE FOREST
	STATE FOREST
	NATIONAL TRAIL
	WILDLIFE REFUGE AREA
	WILDLIFE MANAGEMENT AREA
	WILDLIFE MANAGEMENT AREA
	HYDROLOGIC FEATURES
	RIVER OR STREAM (PERENNIAL)
	LAKE, POND, OR RESERVOIR
	STREAM (INTERMITTENT)
	DRAINAGE DITCH
	WETLAND
	ISLAND OR LAND
	REGIONAL WATERSHED
PUBLIC FACILITIES	CITY CENTERS
STATE CAPITOL	TRIBAL GOVERNMENT CENTER
FEDERAL COURTHOUSE	CITY CENTER
COUNTY COURTHOUSE	LOCALLY INCORPORATED PLACE
ARMORY	UNINCORPORATED COMMUNITY
CITY HALL	
COMMUNITY CENTER	
ARENA	
STADIUM	
POST OFFICE	
POLICE STATION	
FIRE STATION	
PUBLIC LIBRARY	
PUBLIC MUSEUM	
EVENT CENTER	



To request information from this document in an alternative format, call 651-366-4718 or 1-800-657-3774 (Greater Minnesota); 711 or 1-800-627-3529 (Minnesota Relay). You may also send an e-mail to ADArequest.dot@state.mn.us. (Please request at least one week in advance.)

LAST EDITED ON 12-24-2024

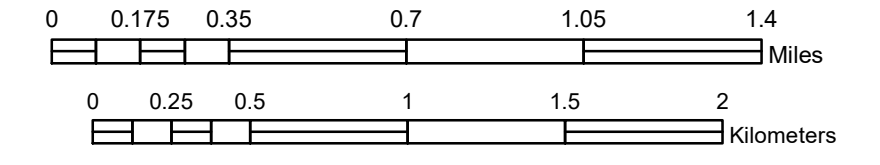
Population (U.S. Census 2020): 68,881

MUNICIPALITY OF SAINT CLOUD

PREPARED BY THE
MINNESOTA DEPARTMENT OF TRANSPORTATION
OFFICE OF TRANSPORTATION SYSTEM MANAGEMENT

IN COOPERATION WITH
U.S. DEPARTMENT OF TRANSPORTATION
FEDERAL HIGHWAY ADMINISTRATION

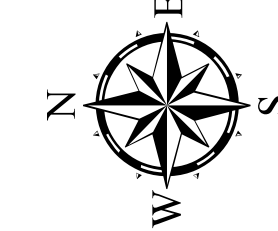
SCALE



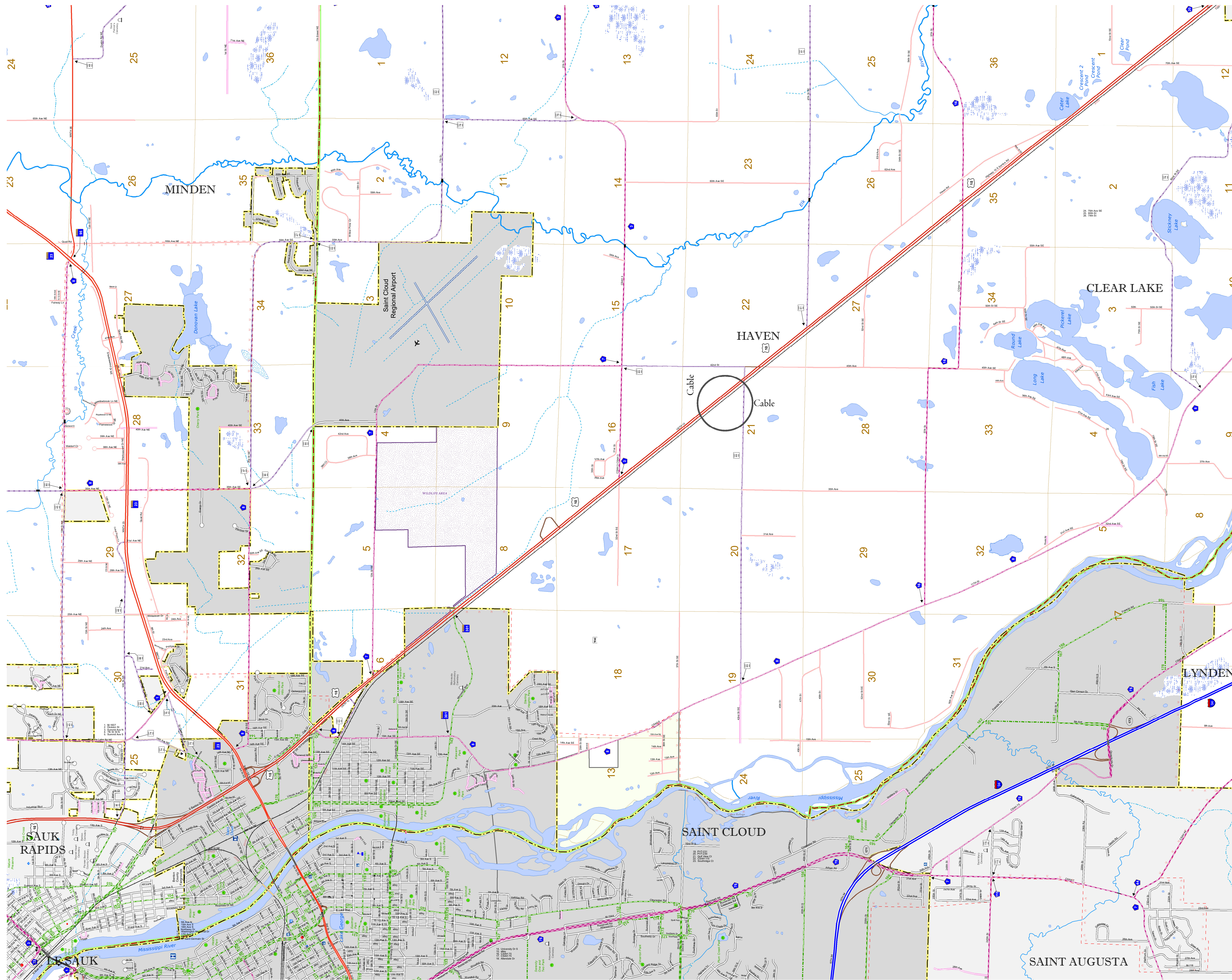
1 in = 2,000 ft

2024

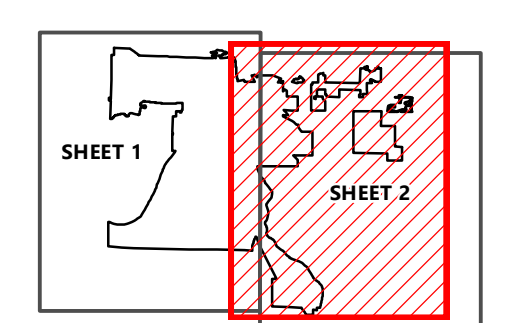
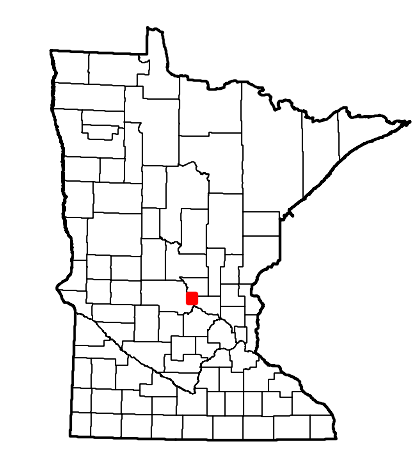
Projection:
Transverse Mercator
NAD 1986
UTM Zone 15



North American Datum
of 1986



ROAD AND ROADWAY FEATURES	PUBLIC SERVICE FEATURES
INTERSTATE	INDOT OFFICE
US HIGHWAY	INDOT TRUCK STATION
EN HIGHWAY	HIGHWAY PATROL DISTRICT OFFICE
COUNTY STATE AID HIGHWAY	STATE TRAVEL INFORMATION CENTER
COUNTY ROAD	REST AREA (FULL SERVICE)
MUNICIPAL STREET	REST AREA (VALET OR PILOT)
MUNICIPAL STATE AID STREET	PUBLIC ACCESS POINT
PRIVATE STREET ROAD	LOCAL PARK
TOWNSHIP ROAD	FARMHOUSES
UNORGANIZED TERRITORY ROAD	PORT OF ENTRY
RAMP OR CONNECTOR	PARK AND RIDE LOT
GREAT RIVER ROAD	PUBLIC UNIVERSITY COLLEGE
OTHER ROADS	PRIVATE UNIVERSITY COLLEGE
Facilities	Elementary School
State Park	Middle School
National	High School
National Park	
Monument	
National Wildlife State Game	
Military	
RAILROAD AND RAILWAY FEATURES	AVIATION FEATURES
EMPIRE BUILDER STATION (AIR/RAIL)	COMMERCIAL AIRPORT
NORTH STAR STATION (COMMUTER)	GENERAL AIRPORT
LIGHT RAIL	AIRSTRIP
BLUE LINE STATION	SEAPLANE
GREEN LINE STATION	AIRPORT RUNWAY
INFRASTRUCTURE FEATURES	CULTURAL FEATURES
LONGS BRIDGE (100' OR GREATER SPAN)	STATE HISTORICAL MARKER
MAJOR BRIDGE (20' TO 100' SPAN)	HISTORIC DISTRICT
MINOR BRIDGE (0' TO 20' SPAN)	HISTORIC SITE
ROAD TUNNEL (100' OR GREATER SPAN)	MONUMENT
RAILROAD BRIDGE (100' OR GREATER SPAN)	CEMETERY
RAILROAD BRIDGE (MAJOR 100' SPAN)	BOUNDARY FEATURES
SKYWAY	TRIBAL LAND
PEDESTRIAN BRIDGE	COUNTY
PEDESTRIAN TUNNEL	MUNICIPALITY
DAM	ADJACENT MUNICIPALITY
LOCK AND DAM	FEDERAL ADJUSTED URBAN AREA (DAUA)
PUBLIC FACILITIES	MILITARY
STATE CAPITOL	STATE PARK
FEDERAL COURTHOUSE	REGIONAL PARK
COUNTY COURTHOUSE	NATIONAL FOREST
ARMORY	NATIONAL AND STATE FOREST
CITY HALL	STATE FOREST
COMMUNITY CENTER	NATIONAL TRAIL
ARENA	WILDLIFE REFUGE AREA
STADIUM	WILDLIFE MANAGEMENT AREA
POST OFFICE	
POLICE STATION	HYDROLOGIC FEATURES
FIRE STATION	RIVER OR STREAM (PERMANENT)
PUBLIC LIBRARY	LAKE, POND OR RESERVOIR
PUBLIC MUSEUM	STREAM (INTERMITTENT)
EVENT CENTER	DRAINAGE DITCH
	WETLAND
	ISLAND OR LAND
	REGIONAL WATERSHED
CITY CENTERS	
TRIBAL GOVERNMENT CENTER	
CITY CENTER	
LOCALLY INCORPORATED PLACE	
UNINCORPORATED COMMUNITY	



To request information from this document in an alternative format, call 651-366-4718 or 1-800-657-3774 (Greater Minnesota); 711 or 1-800-627-3529 (Minnesota Relay). You may also send an e-mail to ADRequest.dot@state.mn.us. (Please request at least one week in advance.)

LAST EDITED ON 12-24-2024

Population (U.S. Census 2020): 68,881