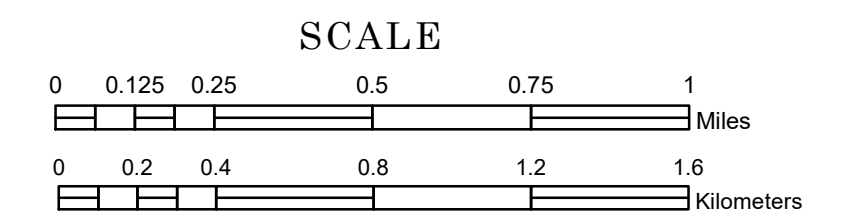


MUNICIPALITY OF SAINT FRANCIS

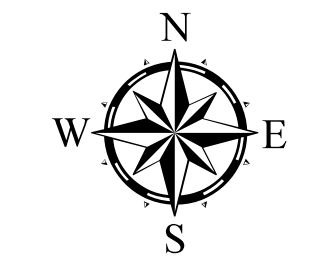
PREPARED BY THE
MINNESOTA DEPARTMENT OF TRANSPORTATION
OFFICE OF TRANSPORTATION SYSTEM MANAGEMENT

IN COOPERATION WITH
U.S. DEPARTMENT OF TRANSPORTATION
FEDERAL HIGHWAY ADMINISTRATION

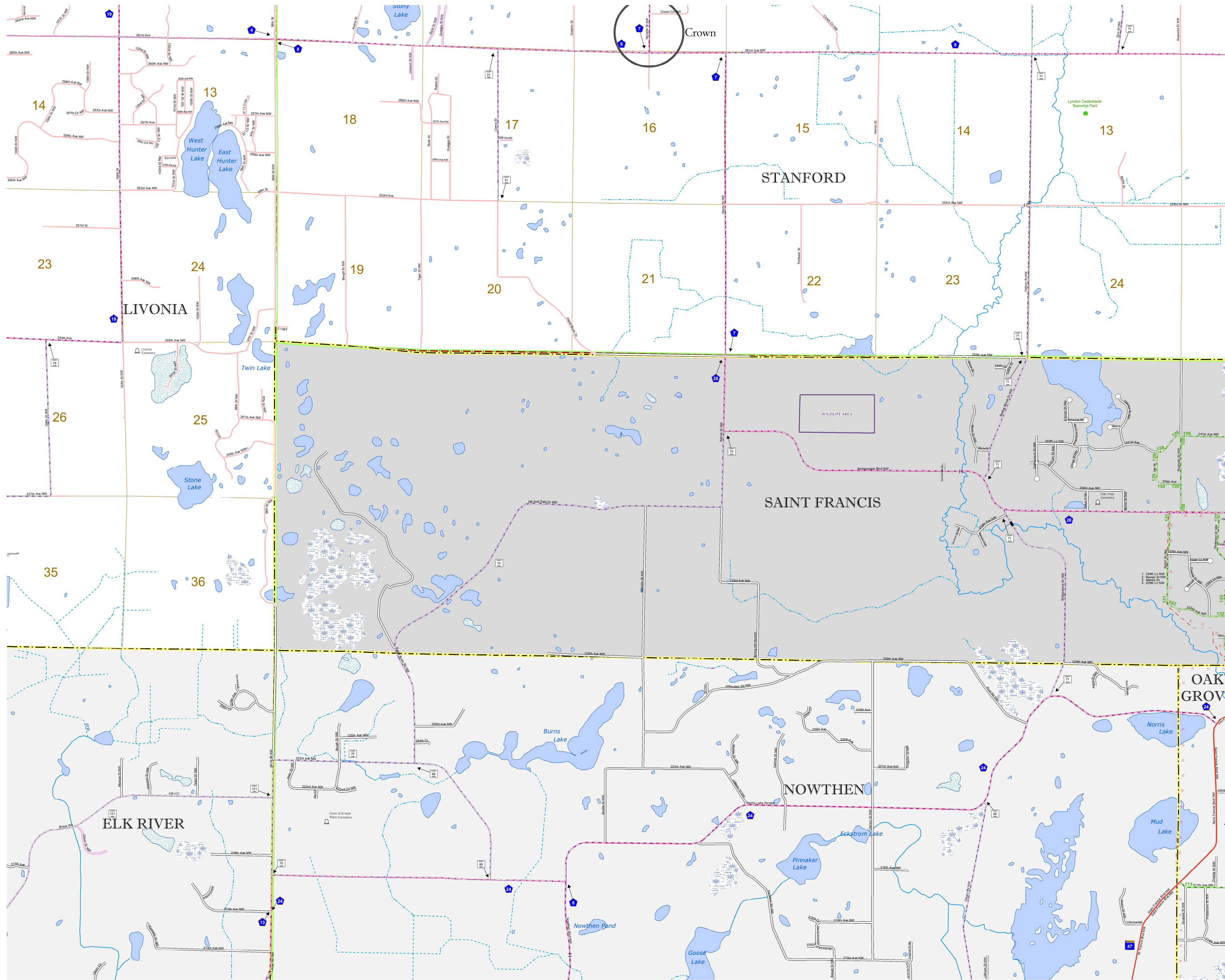


2023

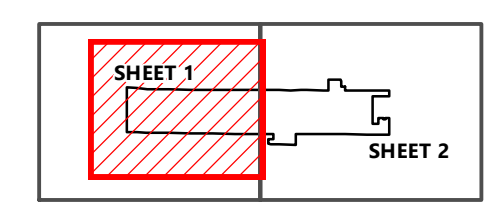
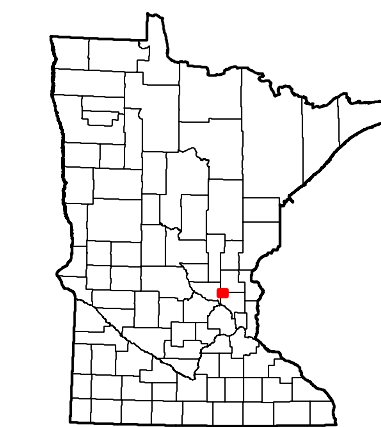
Projection:
Transverse Mercator
NAD 1986
UTM Zone 15



North American Datum
of 1986



ROAD AND ROADWAY FEATURES		PUBLIC SERVICE FEATURES	
INTERSTATE	[Symbol]	MNDOT OFFICE	[Symbol]
US HIGHWAY	[Symbol]	MNDOT TRUCK STATION	[Symbol]
EN HIGHWAY	[Symbol]	HIGHWAY PATROL DISTRICT OFFICE	[Symbol]
COUNTY STATE AID HIGHWAY	[Symbol]	STATE TRAVEL INFORMATION CENTER	[Symbol]
COUNTY ROAD	[Symbol]	REST AREA (FULL SERVICE)	[Symbol]
MUNICIPAL STREET	[Symbol]	REST AREA (VAULT TOLLET)	[Symbol]
MUNICIPAL STATE AID STREET	[Symbol]	WAYSIDE (VAULT OR PIT TOLLET)	[Symbol]
PRIVATE STREET ROAD	[Symbol]	PUBLIC ACCESS POINT	[Symbol]
TOWNSHIP ROAD	[Symbol]	LOCAL PARK	[Symbol]
UNORGANIZED TERRITORY ROAD	[Symbol]	PARKBOUNDS	[Symbol]
RAMP OR CONNECTOR	[Symbol]	PORT OF ENTRY	[Symbol]
GREAT RIVER ROAD	[Symbol]	PARK AND RIDE LOT	[Symbol]
OTHER ROADS	[Symbol]	PUBLIC UNIVERSITY COLLEGE	[Symbol]
Facilities	[Symbol]	PRIVATE UNIVERSITY COLLEGE	[Symbol]
State Park	[Symbol]	ELEMENTARY SCHOOL	[Symbol]
National Park	[Symbol]	MIDDLE SCHOOL	[Symbol]
Monument	[Symbol]	HIGH SCHOOL	[Symbol]
National Wildlife State Game	[Symbol]		
Military	[Symbol]		
RAILROAD AND RAILWAY FEATURES		AVIATION FEATURES	
EMPIRE BUILDER STATION (AIRRAIL)	[Symbol]	COMMERCIAL AIRPORT	[Symbol]
NORTHSTAR STATION (COMRAIL)	[Symbol]	GENERAL AIRPORT	[Symbol]
LIGHT RAIL	[Symbol]	AIRSTRIP	[Symbol]
BLUE LINE STATION	[Symbol]	SEAPLANE	[Symbol]
GREEN LINE STATION	[Symbol]	AIRPORT RUNWAY	[Symbol]
INFRASTRUCTURE FEATURES		CULTURAL FEATURES	
LONGS BRIDGE (100' OR GREATER SPAN)	[Symbol]	STATE HISTORICAL MARKER	[Symbol]
MAJOR BRIDGE (20' TO 100' SPAN)	[Symbol]	HISTORIC DISTRICT	[Symbol]
MINOR BRIDGE (20' OR LESS SPAN)	[Symbol]	HISTORIC SITE	[Symbol]
ROAD TUNNEL (100' OR GREATER SPAN)	[Symbol]	MONUMENT	[Symbol]
RAILROAD BRIDGE (100' OR GREATER SPAN)	[Symbol]	CEMETERY	[Symbol]
RAILROAD BRIDGE (MAJOR 100' SPAN)	[Symbol]		
SKYWAY	[Symbol]	BOUNDARY FEATURES	
PEDESTRIAN BRIDGE	[Symbol]	TRIBAL LAND	[Symbol]
PEDESTRIAN TUNNEL	[Symbol]	COUNTY	[Symbol]
LOCK AND DAM	[Symbol]	MUNICIPALITY	[Symbol]
PUBLIC FACILITIES		ADJACENT MUNICIPALITY	[Symbol]
STATE CAPITOL	[Symbol]	FEDERAL ADJUSTED URBAN AREA (OIA)	[Symbol]
FEDERAL COURTHOUSE	[Symbol]	MILITARY	[Symbol]
COUNTY COURTHOUSE	[Symbol]	STATE PARK	[Symbol]
ARMORY	[Symbol]	REGIONAL PARK	[Symbol]
CITY HALL	[Symbol]	NATIONAL FOREST	[Symbol]
TOWN HALL	[Symbol]	NATIONAL AND STATE FOREST	[Symbol]
COMMUNITY CENTER	[Symbol]	STATE FOREST	[Symbol]
ARENA	[Symbol]	NATIONAL TRAIL	[Symbol]
STADIUM	[Symbol]	WILDLIFE REFUGE AREA	[Symbol]
POST OFFICE	[Symbol]	WILDLIFE MANAGEMENT AREA	[Symbol]
POLICE STATION	[Symbol]	HYDROLOGIC FEATURES	
FIRE STATION	[Symbol]	RIVER OR STREAM (PERMANENT)	[Symbol]
PUBLIC LIBRARY	[Symbol]	LAKE, POND, OR RESERVOIR	[Symbol]
PUBLIC MUSEUM	[Symbol]	STREAM (INTERMITTENT)	[Symbol]
EVENT CENTER	[Symbol]	DRAINAGE DITCH	[Symbol]
CITY CENTERS		WETLAND	[Symbol]
TRIBAL GOVERNMENT CENTER	[Symbol]	ISLAND OR LAND	[Symbol]
CITY CENTER	[Symbol]	REGIONAL WATERSHED	[Symbol]
LOCALLY INCORPORATED PLACE	[Symbol]		
UNINCORPORATED COMMUNITY	[Symbol]		



To request information from this document in an alternative format, call 651-366-4718 or 1-800-657-3774 (Greater Minnesota); 711 or 1-800-627-3529 (Minnesota Relay). You may also send an e-mail to ADArequest.dot@state.mn.us. (Please request at least one week in advance.)

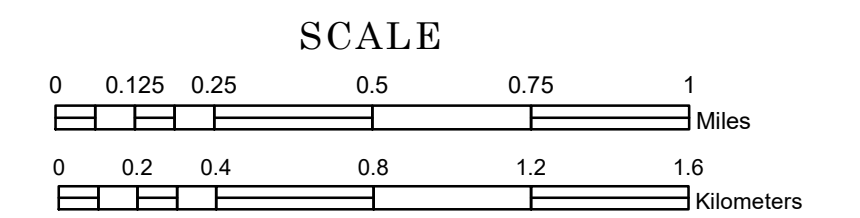
LAST EDITED ON 1-07-2023

Population (U.S. Census 2020): 8,142

MUNICIPALITY OF SAINT FRANCIS

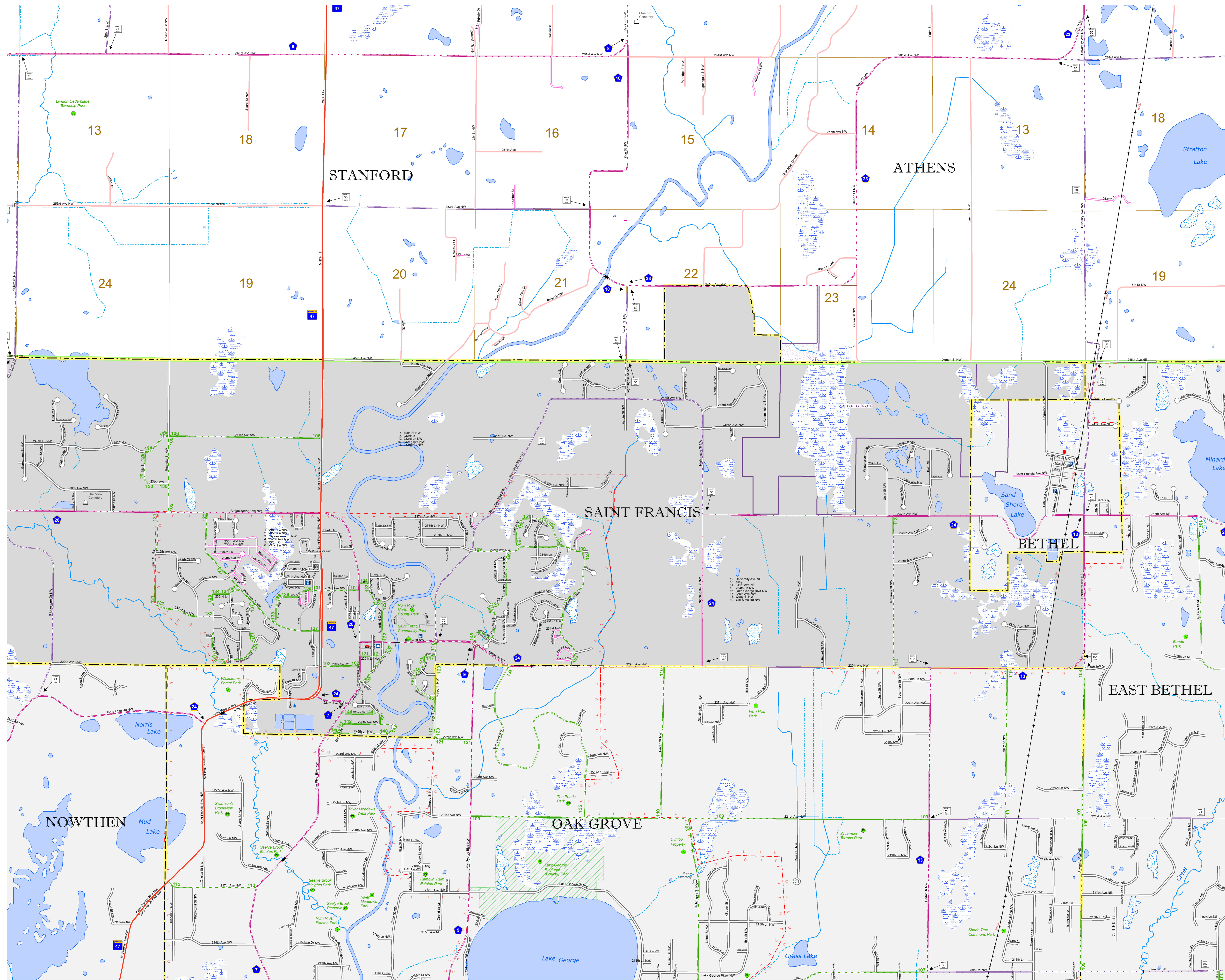
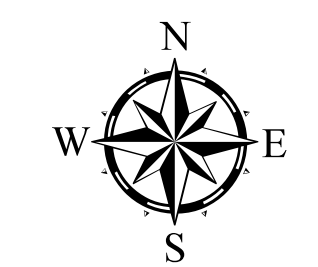
PREPARED BY THE
MINNESOTA DEPARTMENT OF TRANSPORTATION
OFFICE OF TRANSPORTATION SYSTEM MANAGEMENT

IN COOPERATION WITH
U.S. DEPARTMENT OF TRANSPORTATION
FEDERAL HIGHWAY ADMINISTRATION

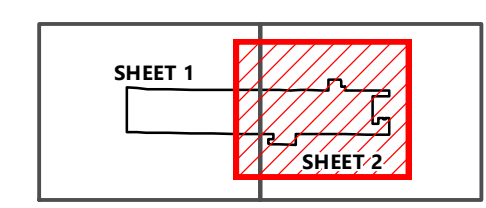
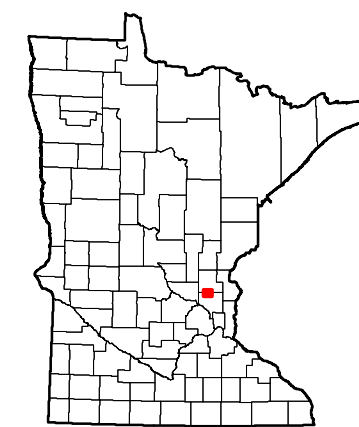


1 in = 1,600 ft
2023

Projection:
Transverse Mercator
NAD 1986
UTM Zone 15



ROAD AND ROADWAY FEATURES		PUBLIC SERVICE FEATURES	
INTERSTATE	[Symbol]	MINOT OFFICE	[Symbol]
US HIGHWAY	[Symbol]	MINOT TRUCK STATION	[Symbol]
STATE HIGHWAY	[Symbol]	HIGHWAY PATROL DISTRICT OFFICE	[Symbol]
COUNTY STATE AID HIGHWAY	[Symbol]	STATE TRAVEL INFORMATION CENTER	[Symbol]
COUNTY ROAD	[Symbol]	REST AREA (FULL SERVICE)	[Symbol]
MUNICIPAL STREET	[Symbol]	REST AREA (VALET OR PIT TOLET)	[Symbol]
MUNICIPAL STATE AID STREET	[Symbol]	PUBLIC ACCESS POINT	[Symbol]
PRIVATE STREET ROAD	[Symbol]	LOCAL PARK	[Symbol]
TOWNSHIP ROAD	[Symbol]	PARKBOARDS	[Symbol]
UNORGANIZED TERRITORY ROAD	[Symbol]	PORT OF ENTRY	[Symbol]
RAMP OR CONNECTOR	[Symbol]	PARK AND RIDE LOT	[Symbol]
GREAT RIVER ROAD	[Symbol]	PUBLIC UNIVERSITY COLLEGE	[Symbol]
INTERSTATE EXIT	[Symbol]	PRIVATE UNIVERSITY COLLEGE	[Symbol]
OTHER ROADS	[Symbol]	ELEMENTARY SCHOOL	[Symbol]
Facilities	[Symbol]	MIDDLE SCHOOL	[Symbol]
State Park	[Symbol]	HIGH SCHOOL	[Symbol]
National Park	[Symbol]		
National Wildlife State Game	[Symbol]		
Military	[Symbol]		
RAILROAD AND RAILWAY FEATURES		AVIATION FEATURES	
EMPIRE BUILDER STATION (AIR/RAIL)	[Symbol]	COMMERCIAL AIRPORT	[Symbol]
NORTHSTAR STATION (COMBUSTION)	[Symbol]	GENERAL AIRPORT	[Symbol]
LIGHT RAIL	[Symbol]	AIRSTRIP	[Symbol]
BLUE LINE STATION	[Symbol]	SEAPLANE	[Symbol]
GREEN LINE STATION	[Symbol]	AIRPORT RUNWAY	[Symbol]
INFRASTRUCTURE FEATURES		CULTURAL FEATURES	
LONGS BRIDGE (100' OR GREATER SPAN)	[Symbol]	STATE HISTORICAL MARKER	[Symbol]
MAJOR BRIDGE (20' TO 100' SPAN)	[Symbol]	HISTORIC DISTRICT	[Symbol]
MINOR BRIDGE (0' TO 20' SPAN)	[Symbol]	HISTORIC SITE	[Symbol]
ROAD TUNNEL (100' OR GREATER SPAN)	[Symbol]	MONUMENT	[Symbol]
RAILROAD BRIDGE (100' OR GREATER SPAN)	[Symbol]	CEMETERY	[Symbol]
RAILROAD BRIDGE (MAJOR 100' SPAN)	[Symbol]		
SKYWAY	[Symbol]	BOUNDARY FEATURES	
PEDESTRIAN BRIDGE	[Symbol]	TRIBAL LAND	[Symbol]
PEDESTRIAN TUNNEL	[Symbol]	COUNTY	[Symbol]
LOCK AND DAM	[Symbol]	MUNICIPALITY	[Symbol]
		ADJACENT MUNICIPALITY	[Symbol]
		FEDERAL ADJUSTED URBAN AREA (DAUA)	[Symbol]
		MILITARY	[Symbol]
		STATE PARK	[Symbol]
		REGIONAL PARK	[Symbol]
		NATIONAL FOREST	[Symbol]
		NATIONAL AND STATE FOREST	[Symbol]
		STATE FOREST	[Symbol]
		NATIONAL TRAIL	[Symbol]
		WILDLIFE REFUGE AREA	[Symbol]
		WILDLIFE MANAGEMENT AREA	[Symbol]
		HYDROLOGIC FEATURES	
		RIVER OR STREAM (PARKING)	[Symbol]
		LAKE, POND, OR RESERVOIR	[Symbol]
		STREAM (INTERMITTENT)	[Symbol]
		DRAINAGE DITCH	[Symbol]
		WETLAND	[Symbol]
		ISLAND OR LAND	[Symbol]
		REGIONAL WATERSHED	[Symbol]
PUBLIC FACILITIES			
STATE CAPITOL	[Symbol]		
FEDERAL COURTHOUSE	[Symbol]		
COUNTY COURTHOUSE	[Symbol]		
ARMORY	[Symbol]		
CITY HALL	[Symbol]		
COMMUNITY CENTER	[Symbol]		
ARENA	[Symbol]		
STADIUM	[Symbol]		
POST OFFICE	[Symbol]		
POLICE STATION	[Symbol]		
FIRE STATION	[Symbol]		
PUBLIC LIBRARY	[Symbol]		
PUBLIC MUSEUM	[Symbol]		
EVENT CENTER	[Symbol]		
CITY CENTERS			
TRIBAL GOVERNMENT CENTER	[Symbol]		
CITY CENTER	[Symbol]		
LOCALLY INCORPORATED PLACE	[Symbol]		
UNINCORPORATED COMMUNITY	[Symbol]		



To request information from this document in an alternative format, call 651-366-4718 or 1-800-657-3774 (Greater Minnesota); 711 or 1-800-627-3529 (Minnesota Relay). You may also send an e-mail to ADArequest.dot@state.mn.us. (Please request at least one week in advance.)

LAST EDITED ON 1-07-2023

Population (U.S. Census 2020): 8,142