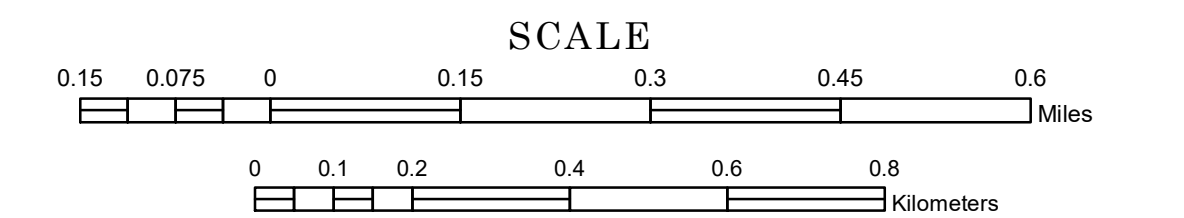


MUNICIPALITY OF SAINT PAUL PARK

PREPARED BY THE
MINNESOTA DEPARTMENT OF TRANSPORTATION
OFFICE OF TRANSPORTATION SYSTEM MANAGEMENT

IN COOPERATION WITH
U.S. DEPARTMENT OF TRANSPORTATION
FEDERAL HIGHWAY ADMINISTRATION

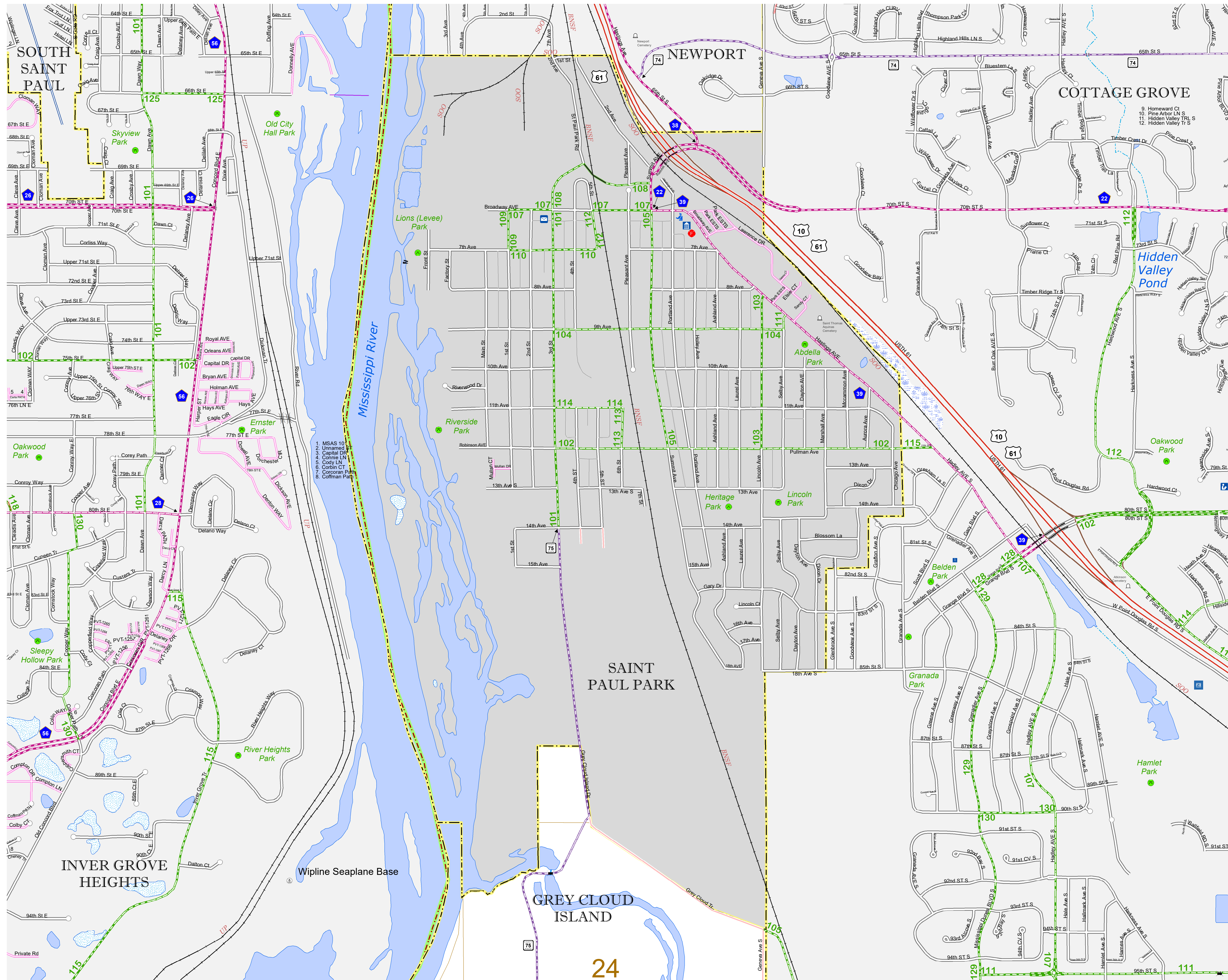


1 in = 800 ft
2023

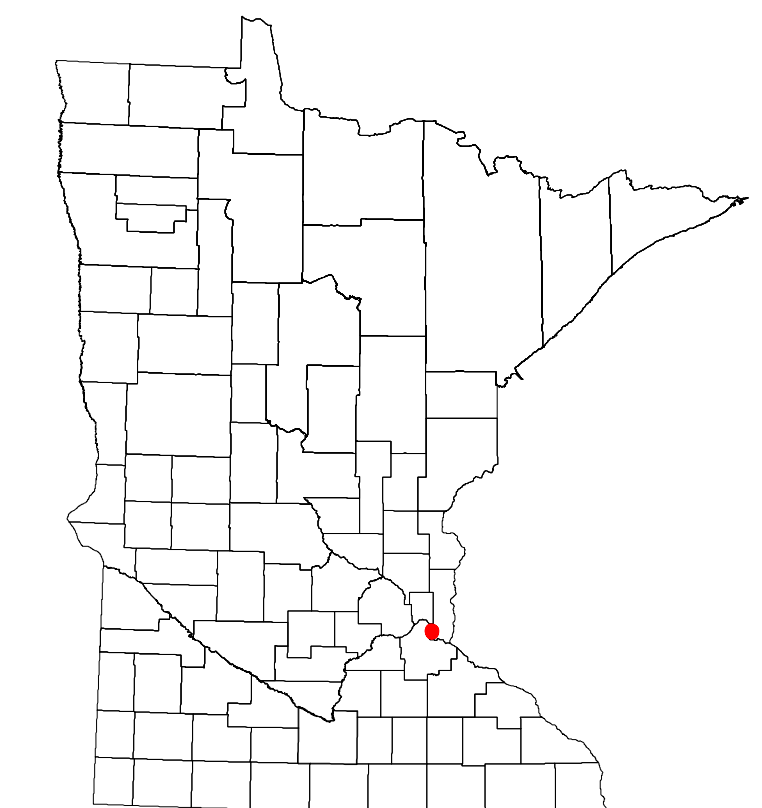
Projection:
Transverse Mercator
NAD 1986
UTM Zone 15



North American Datum
of 1986



ROAD AND ROADWAY FEATURES	PUBLIC SERVICE FEATURES
INTERSTATE	MINOT OFFICE
US HIGHWAY	MINOT TRUCK STATION
COUNTY STATE AID HIGHWAY	HIGHWAY PATROL DISTRICT OFFICE
COUNTY ROAD	STATE TRAVEL INFORMATION CENTER
MUNICIPAL STREET	REST AREA (ONLY TRUCKS)
MUNICIPAL STATE AID STREET	WAYSIDE (ONLY ON P&T TRUCKS)
PRIVATE STREET/ROAD	PUBLIC ACCESS POINT
TOWNSHIP ROAD	LOCAL PARK
UNORGANIZED TERRITORY ROAD	FARGROUNDS
RAILROAD OR CONNECTOR	PARK AND RIDE LOT
OTHER ROAD	PUBLIC UNIVERSITY COLLEGE
FARM ROAD	PRIVATE UNIVERSITY COLLEGE
RAILROAD AND RAILWAY FEATURES	ELEMENTARY SCHOOL
EMPIRE BUILDER STATION (AMTRAK)	MIDDLE SCHOOL
NORTHSTAR STATION (COMASTER)	HIGH SCHOOL
LIGHT RAIL	AVIATION FEATURES
BLUE LINE STATION	COMMERCIAL AIRPORT
GREEN LINE STATION	GENERAL AIRPORT
INFRASTRUCTURE FEATURES	ARSTRIP
LONG BRIDGE (100' OR GREATER SPAN)	SEAPLANE
MAJOR BRIDGE (20' TO 100' SPAN)	AIRPORT RUNWAY
MINOR BRIDGE (2' TO 20' SPAN)	CULTURAL FEATURES
ROAD TUNNEL (100' OR GREATER SPAN)	STATE HISTORICAL MARKER
RAILROAD BRIDGE (LANE/100' SPAN)	HISTORIC DISTRICT
SKYWAY	HISTORIC SITE
PEDESTRIAN BRIDGE	MONUMENT
PEDESTRIAN TUNNEL	CEMETERY
LOCK AND DAM	BOUNDARY FEATURES
PUBLIC FACILITIES	TRIBAL LAND
STATE CAPITOL	COUNTY
FEDERAL COURTHOUSE	MUNICIPALITY
COUNTY COURTHOUSE	ADJACENT MUNICIPALITY
ARMORY	FEDERAL ADJUSTED URBAN AREA (2014)
CITY HALL	MILITARY
COMMUNITY CENTER	STATE PARK
ARENA	REGIONAL PARK
STADIUM	NATIONAL FOREST
POST OFFICE	NATIONAL AND STATE FOREST
POLICE STATION	STATE FOREST
FIRE STATION	NATIONAL TRAIL
PUBLIC LIBRARY	WILDLIFE REFUGE AREA
PUBLIC MUSEUM	WILDLIFE MANAGEMENT AREA
EVENT CENTER	HYDROLOGICAL FEATURES
CITY CENTERS	RIVER OR STREAM (PERMANENT)
TRIBAL GOVERNMENT CENTER	LAKE, POND OR RESERVOIR
CITY CENTER	STREAM (PERMANENT)
LOCALLY INCORPORATED PLACE	STREAM (INTERMITTENT)
UNINCORPORATED COMMUNITY	DRAINAGE DITCH
	WETLAND
	ISLAND OR LAND
	REGIONAL WATERSHED



To request information from this document in an alternative format, call 651-366-4718 or 1-800-657-3774 (Greater Minnesota); 711 or 1-800-627-3529 (Minnesota Relay). You may also send an e-mail to ADArequest.dot@state.mn.us. (Please request at least one week in advance.)

LAST EDITED ON 12-07-2023

Population (U.S. Census 2020): 5544