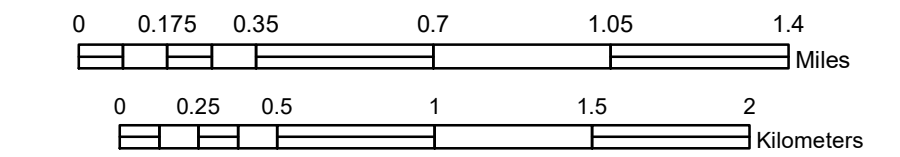


MUNICIPALITY OF RED WING

PREPARED BY THE
MINNESOTA DEPARTMENT OF TRANSPORTATION
OFFICE OF TRANSPORTATION SYSTEM MANAGEMENT

IN COOPERATION WITH
U.S. DEPARTMENT OF TRANSPORTATION
FEDERAL HIGHWAY ADMINISTRATION

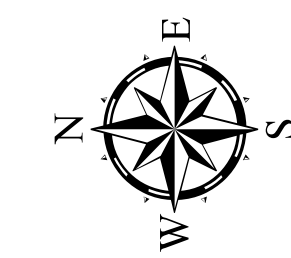
SCALE



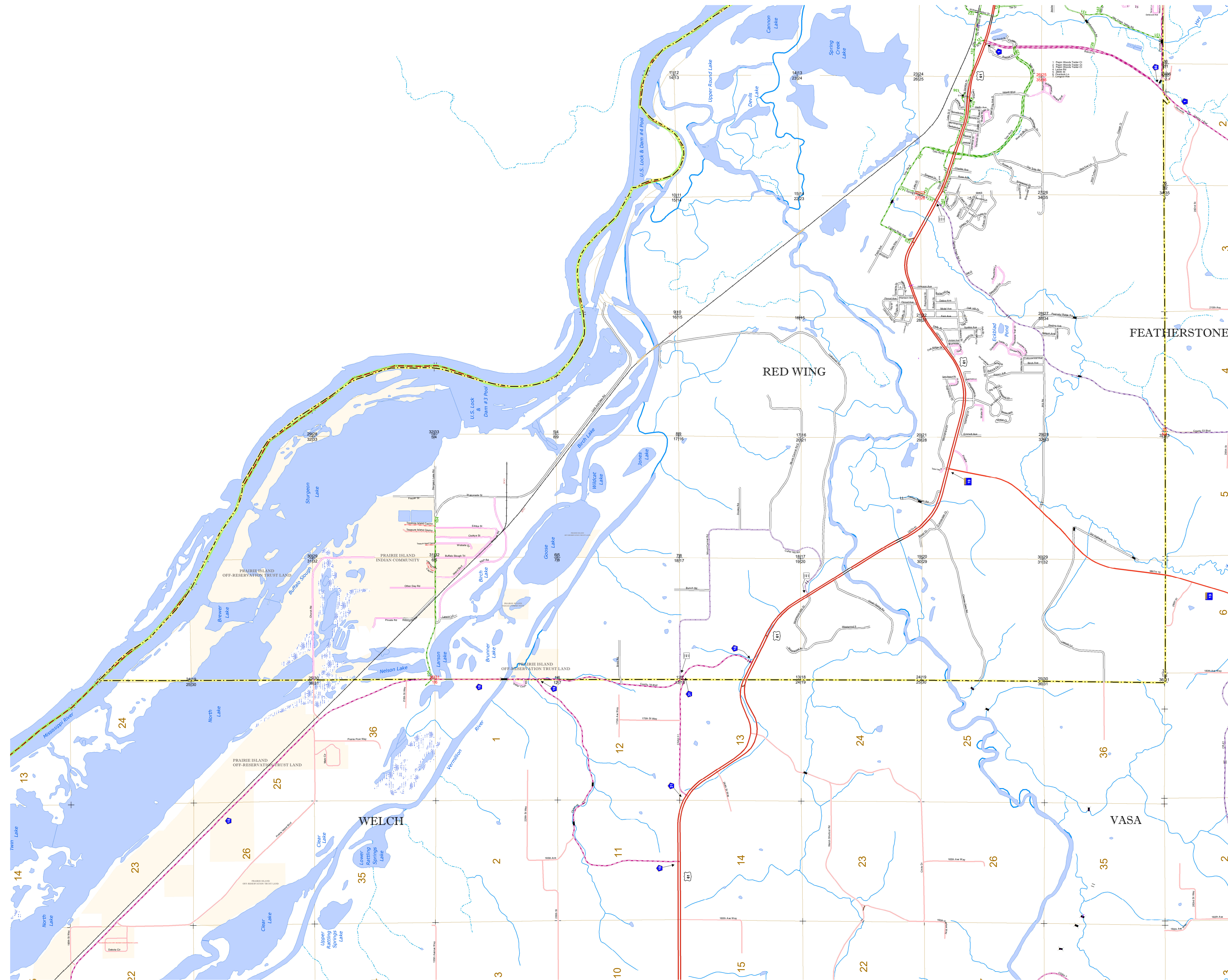
1 in = 2,000 ft

2024

Projection:
Transverse Mercator
NAD 1986
UTM Zone 15



North American Datum
of 1986



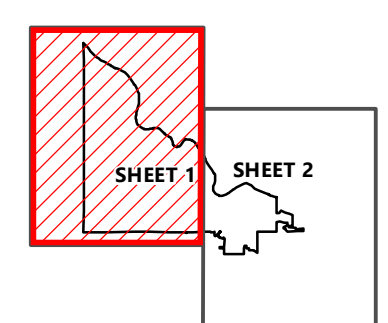
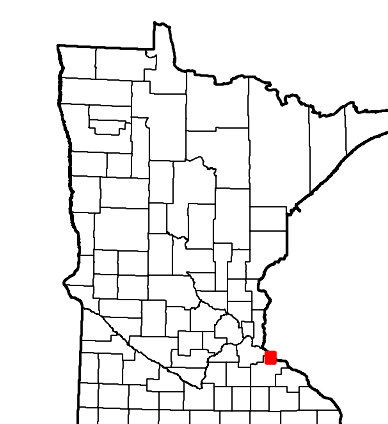
FEATHERSTONE

RED WING

WELCH

VASA

ROAD AND ROADWAY FEATURES		PUBLIC SERVICE FEATURES	
INTERSTATE		MINDOT OFFICE	
US HIGHWAY		MINDOT TRUCK STATION	
MN HIGHWAY		HIGHWAY PATROL DISTRICT OFFICE	
COUNTY STATE AID HIGHWAY		STATE TRAVEL INFORMATION CENTER	
COUNTY ROAD		REST AREA (Full Service)	
MUNICIPAL STATE AID STREET		REST AREA (Walk Toilet)	
MUNICIPAL STREET		WAYSIDE (Vault or Pot Toilet)	
PRIVATE STREET/ROAD		LOCAL PARK	
TOWNSHIP ROAD		PUBLIC ACCESS POINT	
UNORGANIZED TERRITORY ROAD		FAIRGROUNDS	
RAMP OR CONNECTOR		PORT OF ENTRY	
INTERSTATE EXIT		PUNK AND RIDE LOT	
GREAT RIVER ROAD		PUBLIC UNIVERSITY/COLLEGE	
OTHER ROADS		PRIVATE UNIVERSITY/COLLEGE	
FRONTAGE		CULTURAL FEATURES	
INDIAN SERVICE		STATE HISTORICAL MARKER	
MILITARY		HISTORIC DISTRICT	
AVIATION FEATURES		HISTORIC SITE	
COMMERCIAL AIRPORT		MONUMENT	
GENERAL AIRPORT		BOUNDARY FEATURES	
AIRSTRIP		TRIBAL LAND	
SEAPLANE		COUNTY	
AIRPORT RUNWAY		MUNICIPALITY	
RAILROAD AND RAILWAY FEATURES		ADJACENT MUNICIPALITY	
RAILWAY		FEDERAL ADJUSTED URBAN AREA (2014)	
EMPIRE BUILDER STATION (AMTRAK)		MILITARY	
NORTH STAR STATION (COMMUTER)		VOYAGEURS NATIONAL PARK	
LIGHT RAIL		BOUNDARY WATERS CANOE AREA WILDERNESS	
BLUE LINE		STATE PARK	
GREEN LINE		NATIONAL FOREST	
LONG BRIDGE (100' OR GREATER SPAN)		NATIONAL AND STATE FOREST	
MAJOR BRIDGE (20' TO 100' SPAN)		STATE FOREST	
MINOR BRIDGE (8' TO 20' SPAN)		NATIONAL TRAIL	
DAM		WILDLIFE REFUGE AREA	
LOCK AND DAM		WILDLIFE MANAGEMENT AREA	
PUBLIC FACILITIES		HYDROLOGIC FEATURES	
STATE CAPITOL		RIVER OR STREAM (PERENNIAL)	
FEDERAL COURTHOUSE		LAKE, POND OR RESERVOIR	
COUNTY COURTHOUSE		STREAM (INTERMITTENT)	
ARMORY		DRAINAGE DITCH	
CITY CENTERS		WETLAND	
TRIBAL GOVERNMENT CENTER		ISLAND OR LAND	
CITY CENTER		REGIONAL WATERSHED	
LOCALLY KNOWN PLACE			
UNINCORPORATED COMMUNITY			



To request information from this document in an alternative format, call 651-366-4718 or 1-800-657-3774 (Greater Minnesota); 711 or 1-800-627-3529 (Minnesota Relay). You may also send an e-mail to ADArequest.dot@state.mn.us. (Please request at least one week in advance.)

LAST EDITED ON 12-31-2024

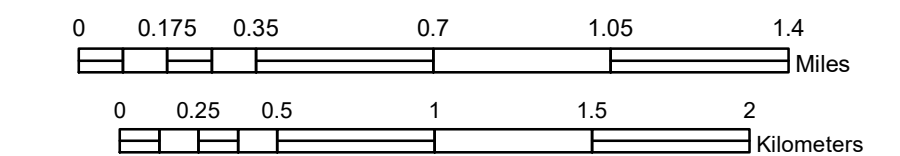
Population (U.S. Census 2010): 16,459

MUNICIPALITY OF RED WING

PREPARED BY THE
MINNESOTA DEPARTMENT OF TRANSPORTATION
OFFICE OF TRANSPORTATION SYSTEM MANAGEMENT

IN COOPERATION WITH
U.S. DEPARTMENT OF TRANSPORTATION
FEDERAL HIGHWAY ADMINISTRATION

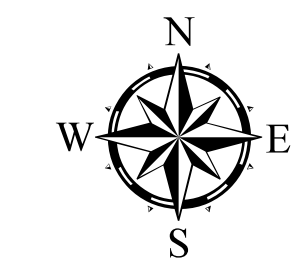
SCALE



1 in = 2,000 ft

2024

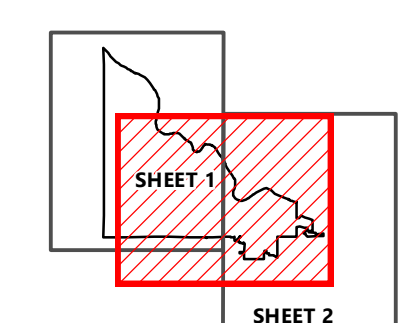
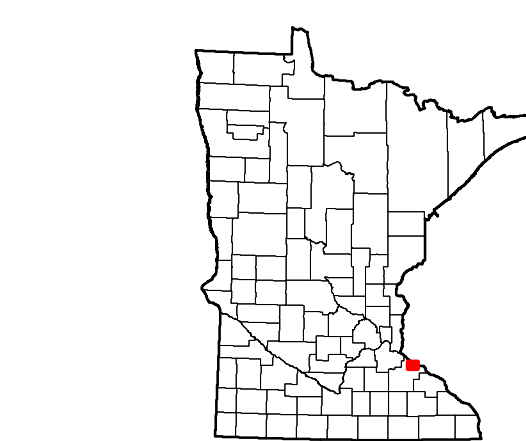
Projection:
Transverse Mercator
NAD 1986
UTM Zone 15



North American Datum
of 1986



ROAD AND HIGHWAY FEATURES		PUBLIC SERVICE FEATURES	
INTERSTATE		MINDOT OFFICE	
US HIGHWAY		MINDOT TRUCK STATION	
MN HIGHWAY		HIGHWAY PATROL DISTRICT OFFICE	
COUNTY STATE AID HIGHWAY		STATE TRAVEL INFORMATION CENTER	
COUNTY ROAD		REST AREA (FULL SERVICE)	
MUNICIPAL STATE AID STREET		REST AREA (WAIT TOILET)	
MUNICIPAL STREET		WAYSIDE (VAULT OR PIP TOILET)	
PRIVATE STREET/ROAD		LOCAL PARK	
TOWNSHIP ROAD		PUBLIC ACCESS POINT	
UNORGANIZED TERRITORY ROAD		FAIRGROUNDS	
RAMP OR CONNECTOR		PORT OF ENTRY	
INTERSTATE EXIT		PUNK AND RIDE LOT	
GREAT RIVER ROAD		PRIVATE UNIVERSITY COLLEGE	
OTHER ROADS		PRIVATE UNIVERSITY COLLEGE	
FRONTAGE		STATE HISTORICAL MARKER	
INDUS SERVICE		HISTORIC DISTRICT	
MILITARY		HISTORIC SITE	
		MONUMENT	
		BOUNDARY FEATURES	
		TRIBAL LAND	
		COUNTY	
		MUNICIPALITY	
		ADJACENT MUNICIPALITY	
		FEDERAL ADJUSTED URBAN AREA (2014)	
		MILITARY	
		VOYAGEURS NATIONAL PARK	
		BOUNDARY WATERS CANOE AREA WILDERNESS	
		STATE PARK	
		REGIONAL PARK	
		NATIONAL FOREST	
		NATIONAL AND STATE FOREST	
		STATE FOREST	
		NATIONAL TRAIL	
		WILDLIFE REFUGE AREA	
		WILDLIFE MANAGEMENT AREA	
		RIVER OR STREAM (PULKENMALL)	
		LAKE, POND OR RESERVOIR	
		STREAM (INTERMITTENT)	
		DRAINAGE DITCH	
		WETLAND	
		ISLAND OR LAND	
		REGIONAL WATERSHED	
		CITY CENTERS	
		TRIBAL GOVERNMENT CENTER	
		CITY CENTER	
		LOCALLY KNOWN PLACE	
		UNINCORPORATED COMMUNITY	



To request information from this document in an alternative format, call 651-366-4718 or 1-800-657-3774 (Greater Minnesota); 711 or 1-800-627-3529 (Minnesota Relay). You may also send an e-mail to ADArequest.dot@state.mn.us. (Please request at least one week in advance.)

LAST EDITED ON 12-31-2024

Population (U.S. Census 2010): 16,459