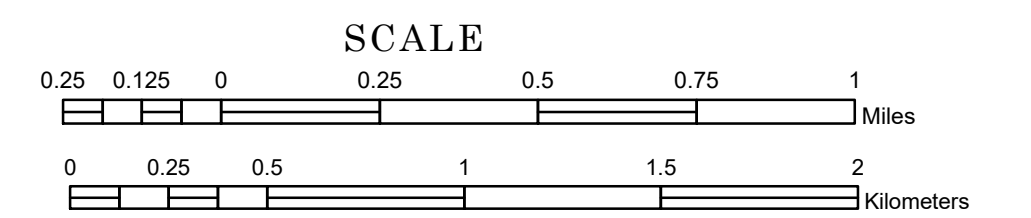


MUNICIPALITY OF WYOMING

PREPARED BY THE
MINNESOTA DEPARTMENT OF TRANSPORTATION
OFFICE OF TRANSPORTATION SYSTEM MANAGEMENT

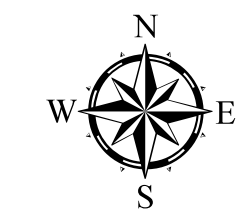
IN COOPERATION WITH
U.S. DEPARTMENT OF TRANSPORTATION
FEDERAL HIGHWAY ADMINISTRATION



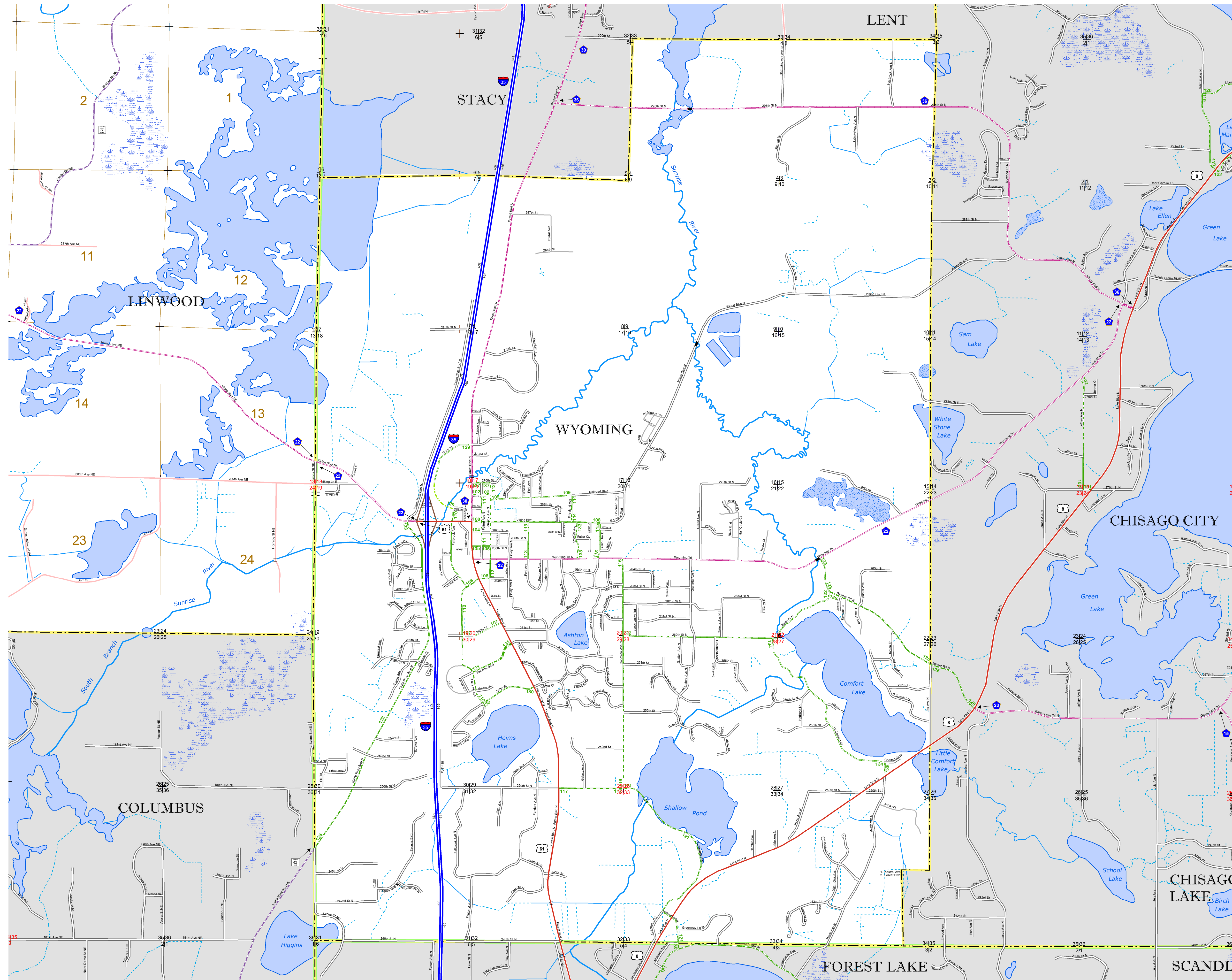
1 in = 1,600 ft

2023

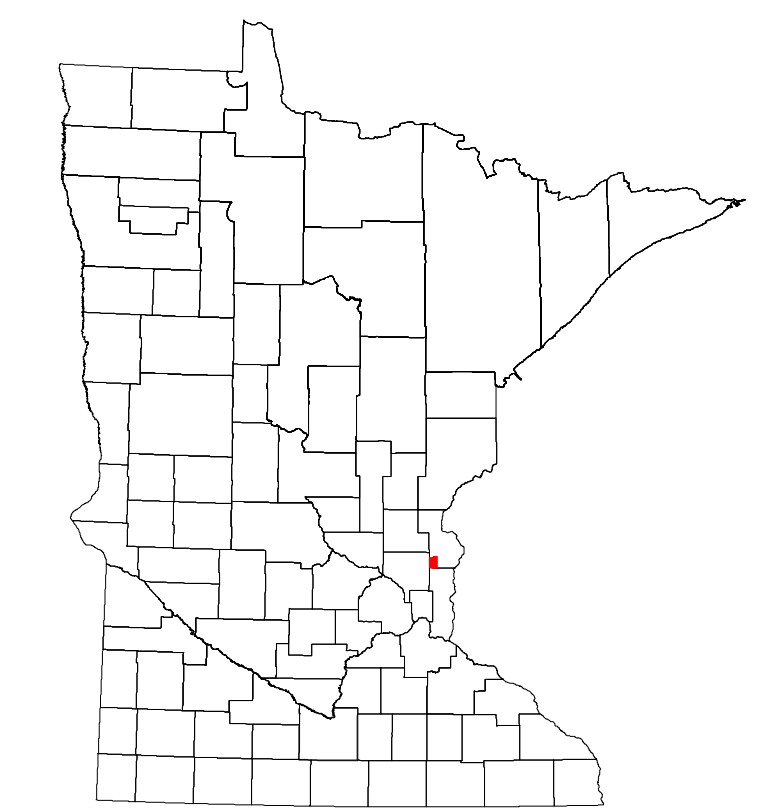
Projection:
Transverse Mercator
NAD 1986
UTM Zone 15



North American Datum
of 1986



ROAD AND ROADWAY FEATURES		INFRASTRUCTURE FEATURES	
INTERSTATE		LONG BRIDGE (100' OR GREATER SPAN)	
US HIGHWAY		MAJOR BRIDGE (20' TO 100' SPAN)	
MN HIGHWAY		MINOR BRIDGE (5' TO 20' SPAN)	
COUNTY STATE AID HIGHWAY		ROAD TUNNEL (100' OR GREATER SPAN)	
COUNTY ROAD		RAILROAD BRIDGE (100' OR GREATER SPAN)	
MUNICIPAL STREET		RAILROAD BRIDGE (Under 100' SPAN)	
MUNICIPAL STATE AID STREET		SKYWAY	
PRIVATE STREET/ROAD		PEDESTRIAN BRIDGE	
TOWNSHIP ROAD		PEDESTRIAN TUNNEL	
UNORGANIZED TERRITORY ROAD		AVIATION FEATURES	
RAMP OR CONNECTOR		COMMERCIAL AIRPORT	
GREAT RIVER ROAD		GENERAL AIRPORT	
COUNTY STATE AID HIGHWAY (DNE)		AIRSTRIP	
MUNICIPAL STATE AID STREET (DNE)		SEAPLANE	
TRUNK HIGHWAY FUTURE PROJECTS		AIRPORT RUNWAY	
OTHER ROADS		HYDROLOGIC FEATURES	
FRONTAGE		RIVER OR STREAM (PERMANENT)	
TRAIL SERVICE		LAKE, POND OR RESERVOIR	
NATIONAL PARK		STREAM (PERMANENT)	
NATIONAL FOREST		DRAINAGE DITCH	
STATE FOREST		WETLAND	
STATE GAME		ISLAND OR LAND	
RAILROAD AND RAILWAY FEATURES		REGIONAL WATERSHED	
RAILROAD		OTHER FEATURES	
COUNTY			
MUNICIPALITY			



Population (U.S. Census 2020): 8,032

To request information from this document in an alternative format, call 651-366-4718 or 1-800-657-3774 (Greater Minnesota); 711 or 1-800-627-3529 (Minnesota Relay). You may also send an e-mail to ADArequest.dot@state.mn.us. (Please request at least one week in advance.)