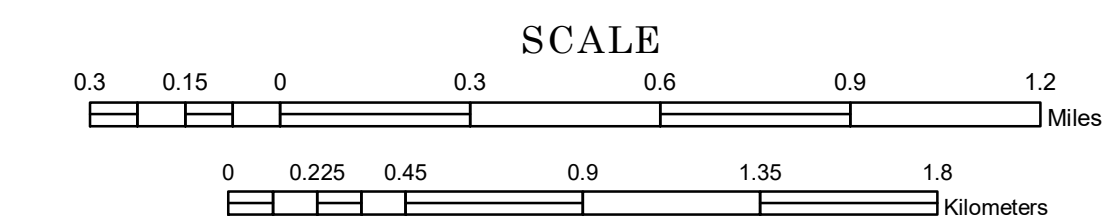


MUNICIPALITY OF BRAINERD

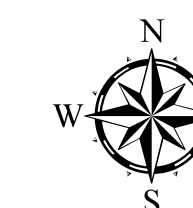
PREPARED BY THE
MINNESOTA DEPARTMENT OF TRANSPORTATION
OFFICE OF TRANSPORTATION SYSTEM MANAGEMENT

IN COOPERATION WITH
U.S. DEPARTMENT OF TRANSPORTATION
FEDERAL HIGHWAY ADMINISTRATION

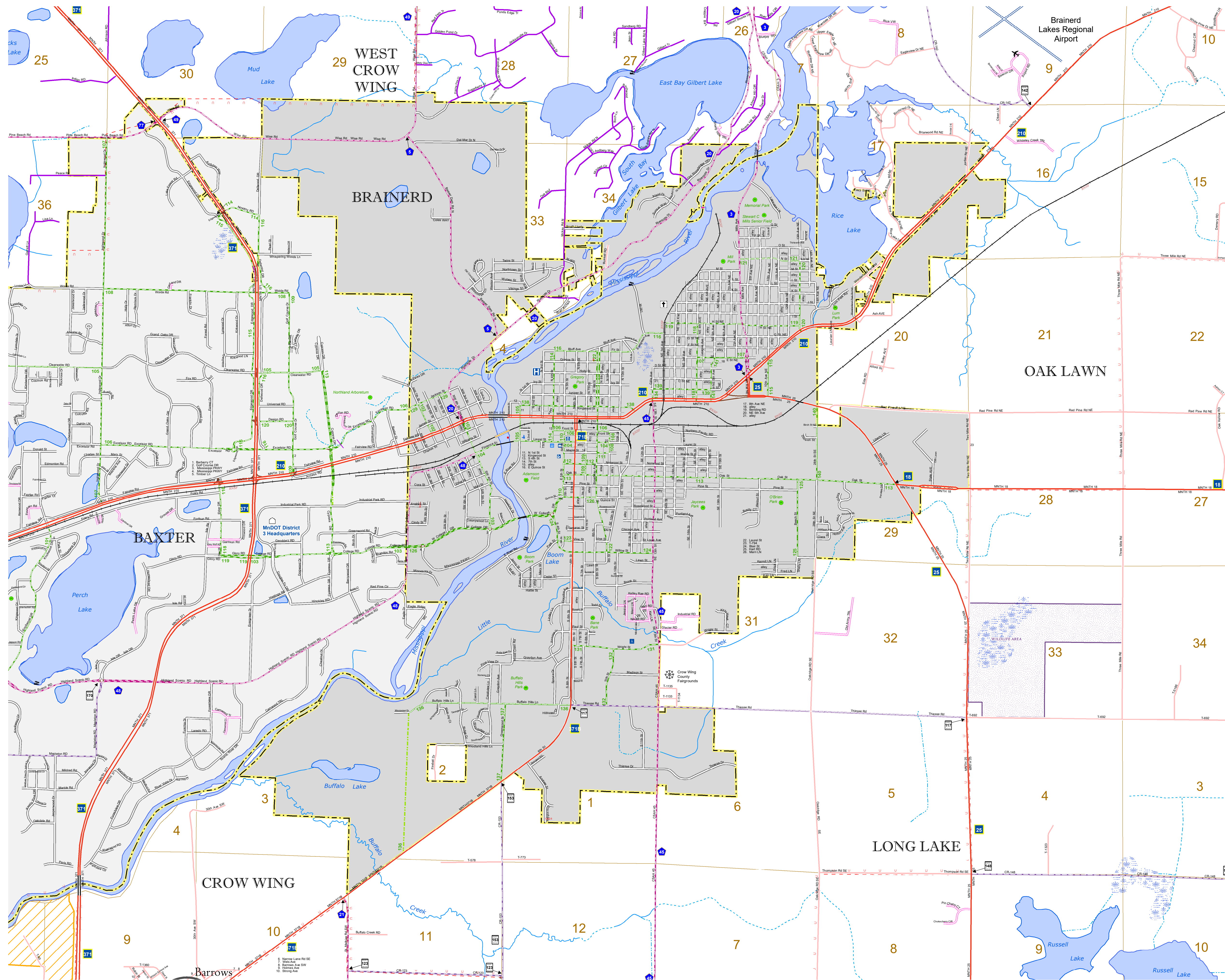


1 in = 1,600 ft
2019

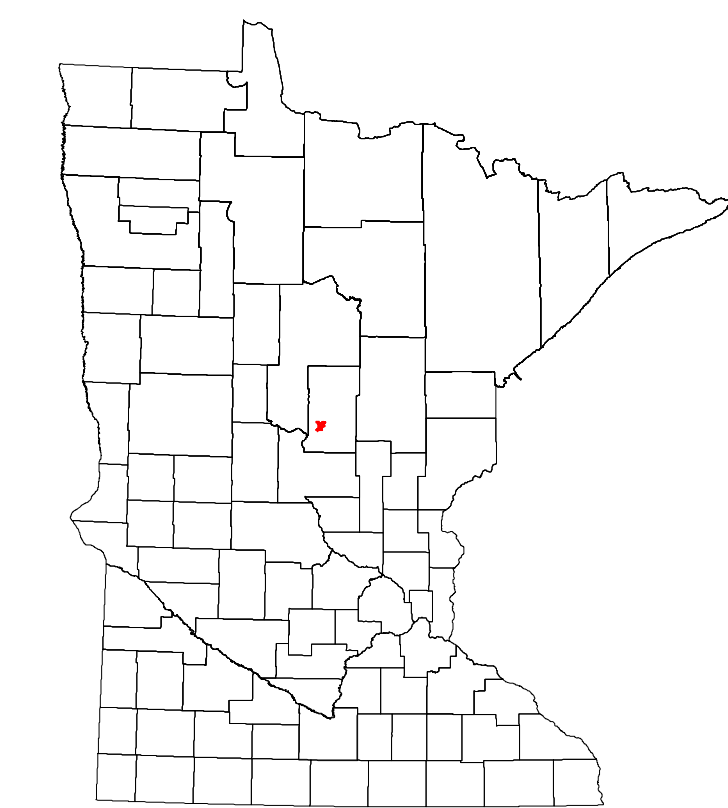
Projection:
Transverse Mercator
NAD 1986
UTM Zone 15



North American Datum
of 1986



ROAD AND ROADWAY FEATURES	MNDOT OFFICE	PUBLIC SERVICE FEATURES
INTERSTATE	MNDOT OFFICE	MNDOT TRUCK STATION
US HIGHWAY	MINNAPATROL DISTRICT OFFICE	STATE TRAVEL INFORMATION CENTER
MINN HIGHWAY	REST AREA (FULL SERVICE)	REST AREA (VAULT TOILET)
COUNTY STATE AID HIGHWAY	WIDEWAY (ONLY OR PIT TOILET)	LOCAL PARK
COUNTY ROAD	PUBLIC ACCESS POINT	FAIRGROUNDS
MUNICIPAL STATE AID STREET	PORT OF ENTRY	PARK AND RIDE LOT
PRIVATE STREET/ROAD	PUBLIC UNIVERSITY/COLLEGE	PRIVATE UNIVERSITY/COLLEGE
TOWNSHIP ROAD	OTHER ROADS	STATE PARK
UNORGANIZED TERRITORY ROAD	INDIAN SERVICE	NATIONAL PARK
RAMP OR CONNECTOR	NATIONAL MONUMENT	NATIONAL FOREST
INTERSTATE EXIT	MULTIWAY	NATIONAL WILDLIFE STATE GAME
GREAT RIVER ROAD	AVIATION FEATURES	CULTURAL FEATURES
COMMERCIAL AIRPORT	GENERAL AIRPORT	HISTORIC DISTRICT
AIRSTRIP	SEAPLANE	MONUMENT
AIRPORT RUNWAY	RAILROAD AND RAILWAY FEATURES	BOUNDARY FEATURES
RAILWAY	EMPIRE BUILDER STATION (AMTRAK)	MUNICIPALITY
NORTHSTAR STATION (COMRAKER)	LIGHT RAIL	ADJACENT MUNICIPALITY
BLUE LINE	GREEN LINE	FEDERAL ADJUSTED URBAN AREA (2014)
LONG BRIDGE (100' OR GREATER SPAN)	MAJOR BRIDGE (20' TO 100' SPAN)	MILITARY
MINOR BRIDGE (5' TO 20' SPAN)	DAM	VOYAGEURS NATIONAL PARK
LOCK AND DAM	STATE CAPITOL	BOUNDARY WATERS CANOE AREA WILDERNESS
FEDERAL COURTHOUSE	COUNTY COURTHOUSE	STATE PARK
ARMORY	CITY CENTERS	REGIONAL PARK
TRIBAL GOVERNMENT CENTER	CITY CENTER	NATIONAL FOREST
LOCALLY KNOWN PLACE	UNINCORPORATED COMMUNITY	NATIONAL AND STATE FOREST
ISLAND OR LAND	REGIONAL WATERSHED	STATE FOREST
		NATIONAL TRAIL
		WILDLIFE REFUGE AREA
		WILDLIFE MANAGEMENT AREA
		HYDROLOGIC FEATURES
		RIVER OR STREAM (PERMANENT)
		LAKE, POND OR RESERVOIR
		STREAM (INTERMITTENT)
		DRAINAGE DITCH
		WETLAND
		ISLAND OR LAND
		REGIONAL WATERSHED



Population (U.S. Census 2010): 13590

To request information from this document in an alternative format, call 651-366-4718 or 1-800-657-3774 (Greater Minnesota); 711 or 1-800-627-3529 (Minnesota Relay). You may also send an e-mail to ADAREquest.dot@state.mn.us. (Please request at least one week in advance.)