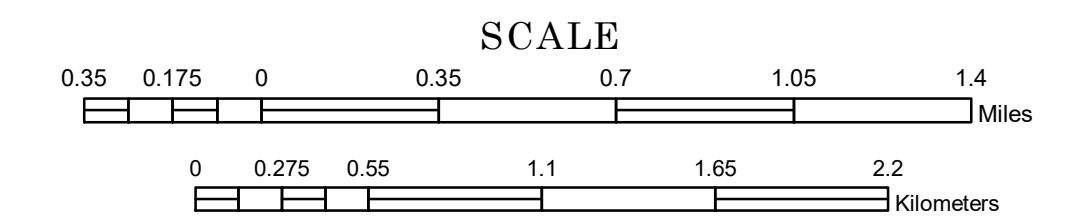


MUNICIPALITY OF ELK RIVER

PREPARED BY THE
MINNESOTA DEPARTMENT OF TRANSPORTATION
OFFICE OF TRANSPORTATION SYSTEM MANAGEMENT

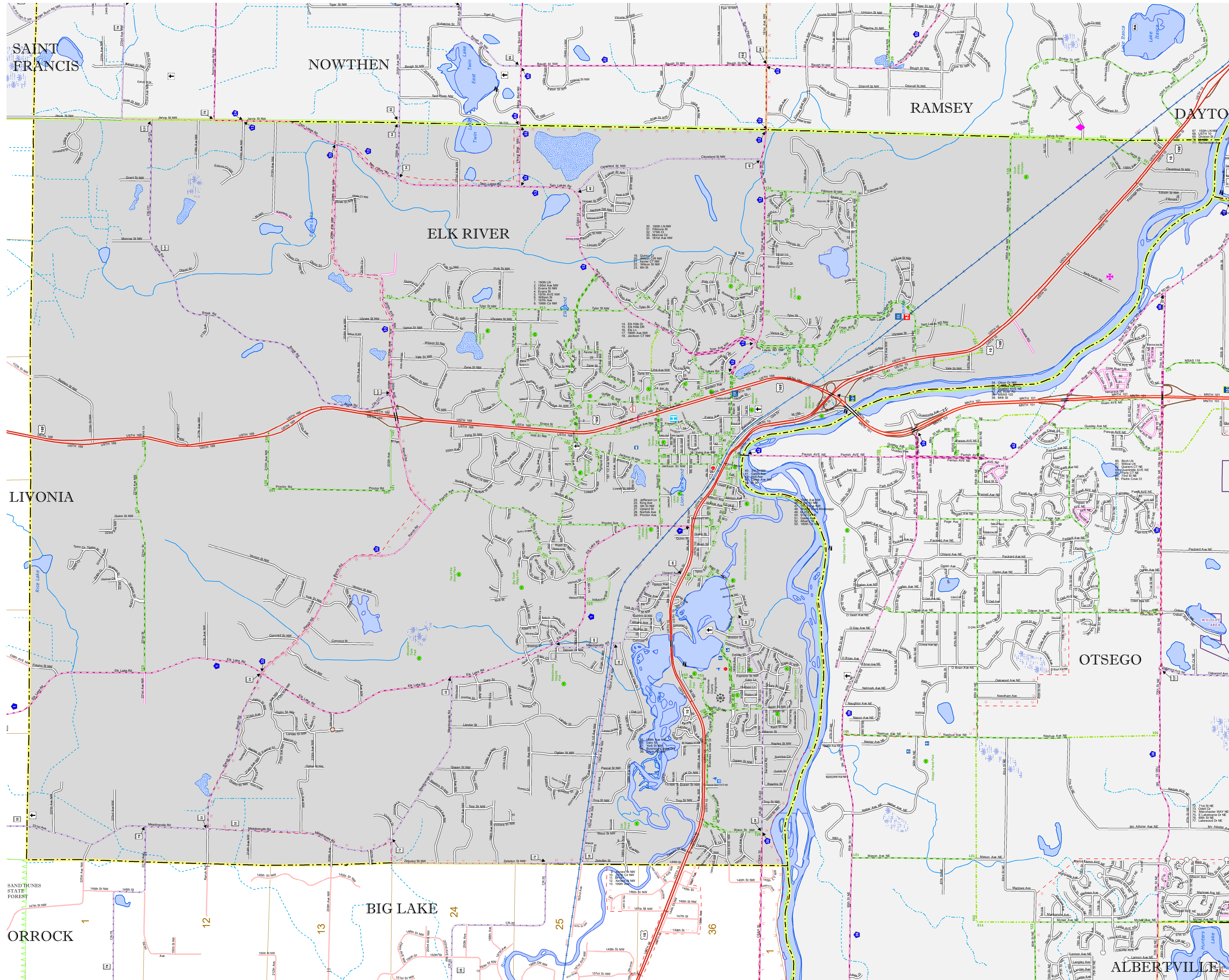
IN COOPERATION WITH
U.S. DEPARTMENT OF TRANSPORTATION
FEDERAL HIGHWAY ADMINISTRATION



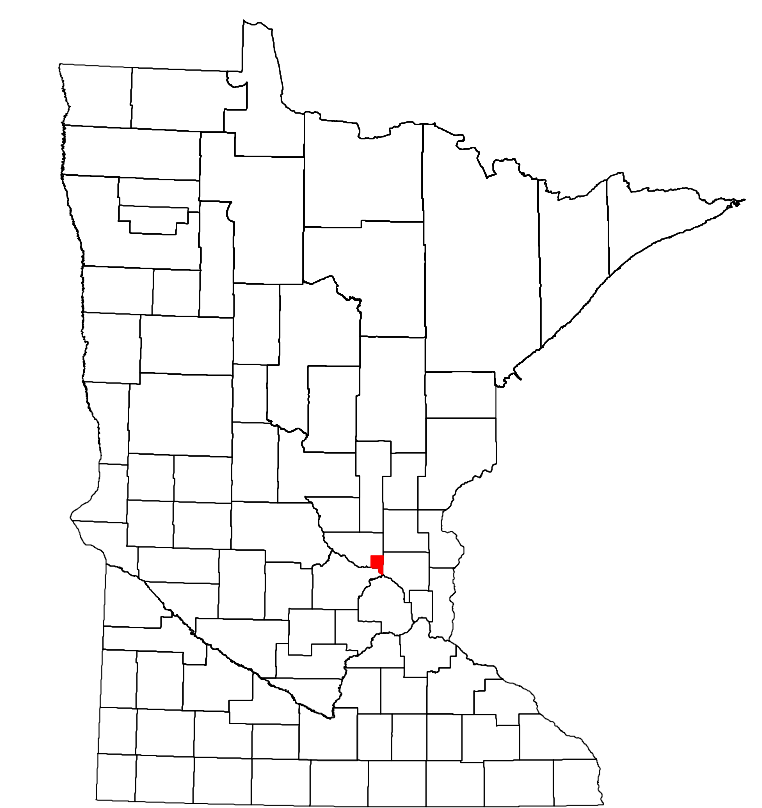
1 in = 2,000 ft
2019

Projection:
Transverse Mercator
NAD 1986
UTM Zone 15

North American Datum
of 1986



ROAD AND ROADWAY FEATURES		PUBLIC SERVICE FEATURES	
INTERSTATE	[Symbol]	MNDOT OFFICE	[Symbol]
US HIGHWAY	[Symbol]	MNDOT TRUCK STATION	[Symbol]
MN HIGHWAY	[Symbol]	HIGHWAY PATROL DISTRICT OFFICE	[Symbol]
COUNTY STATE AID HIGHWAY	[Symbol]	STATE TRAVEL INFORMATION CENTER	[Symbol]
COUNTY ROAD	[Symbol]	REST AREA (FULL SERVICE)	[Symbol]
MUNICIPAL STATE AID STREET	[Symbol]	REST AREA (VAULT TOILET)	[Symbol]
PRIVATE STREET/ROAD	[Symbol]	WIDEWIDE (BIKES OR P/T TOILET)	[Symbol]
TOWNSHIP ROAD	[Symbol]	LOCAL PARK	[Symbol]
UNORGANIZED TERRITORY ROAD	[Symbol]	PUBLIC ACCESS POINT	[Symbol]
RAMP OR CONNECTOR	[Symbol]	FAIRGROUNDS	[Symbol]
INTERSTATE EXIT	[Symbol]	PORT OF ENTRY	[Symbol]
OTHER ROADS	[Symbol]	PARK AND RIDE LOT	[Symbol]
INDIAN SERVICE	[Symbol]	PUBLIC UNIVERSITY/COLLEGE	[Symbol]
NATIONAL FOREST	[Symbol]	PRIVATE UNIVERSITY/COLLEGE	[Symbol]
MILITARY	[Symbol]		
RAILROAD AND RAILWAY FEATURES		CULTURAL FEATURES	
RAILWAY	[Symbol]	STATE HISTORICAL MARKER	[Symbol]
EMPIRE BUILDER STATION (AMTRAK)	[Symbol]	HISTORIC DISTRICT	[Symbol]
NORTHSTAR STATION (COMMUTER)	[Symbol]	HISTORIC SITE	[Symbol]
VOYAGEURS NATIONAL PARK	[Symbol]	MONUMENT	[Symbol]
BOUNDARY WATERS CANOE AREA WILDERNESS	[Symbol]	BOUNDARY FEATURES	
STATE PARK	[Symbol]	TRIBAL LAND	[Symbol]
NATIONAL FOREST	[Symbol]	COUNTY	[Symbol]
NATIONAL AND STATE FOREST	[Symbol]	MUNICIPALITY	[Symbol]
STATE FOREST	[Symbol]	ADJACENT MUNICIPALITY	[Symbol]
NATIONAL TRAIL	[Symbol]	FEDERAL ADJUSTED URBAN AREA (2014)	[Symbol]
WILDLIFE REFUGE AREA	[Symbol]	MILITARY	[Symbol]
WILDLIFE MANAGEMENT AREA	[Symbol]	VOYAGEURS NATIONAL PARK	[Symbol]
HYDROLOGIC FEATURES	[Symbol]	BOUNDARY WATERS CANOE AREA WILDERNESS	[Symbol]
RIVER OR STREAM (PERMANENT)	[Symbol]	STATE PARK	[Symbol]
LAKE, POND OR RESERVOIR	[Symbol]	NATIONAL FOREST	[Symbol]
STREAM (INTERMITTENT)	[Symbol]	NATIONAL AND STATE FOREST	[Symbol]
DRAINAGE DITCH	[Symbol]	STATE FOREST	[Symbol]
WETLAND	[Symbol]	NATIONAL TRAIL	[Symbol]
ISLAND OR LAND	[Symbol]	WILDLIFE REFUGE AREA	[Symbol]
REGIONAL WATERSHED	[Symbol]	WILDLIFE MANAGEMENT AREA	[Symbol]
PUBLIC FACILITIES		HYDROLOGIC FEATURES	
STATE CAPITOL	[Symbol]	RIVER OR STREAM (PERMANENT)	[Symbol]
FEDERAL COURTHOUSE	[Symbol]	LAKE, POND OR RESERVOIR	[Symbol]
COUNTY COURTHOUSE	[Symbol]	STREAM (INTERMITTENT)	[Symbol]
ARMORY	[Symbol]	DRAINAGE DITCH	[Symbol]
CITY CENTERS		WETLAND	
TRIBAL GOVERNMENT CENTER	[Symbol]	ISLAND OR LAND	[Symbol]
CITY CENTER	[Symbol]	REGIONAL WATERSHED	[Symbol]
LOCALLY KNOWN PLACE	[Symbol]		
UNINCORPORATED COMMUNITY	[Symbol]		



Population (U.S. Census 2010): 22974

To request information from this document in an alternative format, call 651-366-4718 or 1-800-657-3774 (Greater Minnesota); 711 or 1-800-627-3529 (Minnesota Relay). You may also send an e-mail to ADRequest.dot@state.mn.us. (Please request at least one week in advance.)