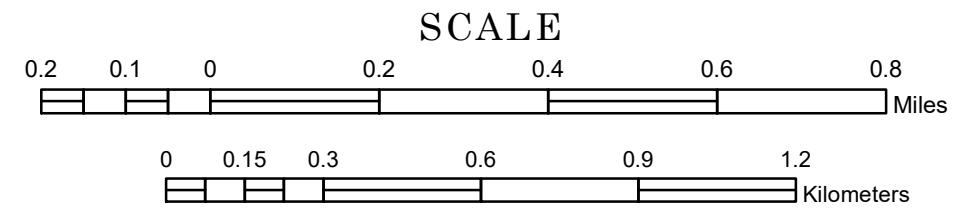


MUNICIPALITY OF SILVER BAY

PREPARED BY THE
MINNESOTA DEPARTMENT OF TRANSPORTATION
OFFICE OF TRANSPORTATION SYSTEM MANAGEMENT

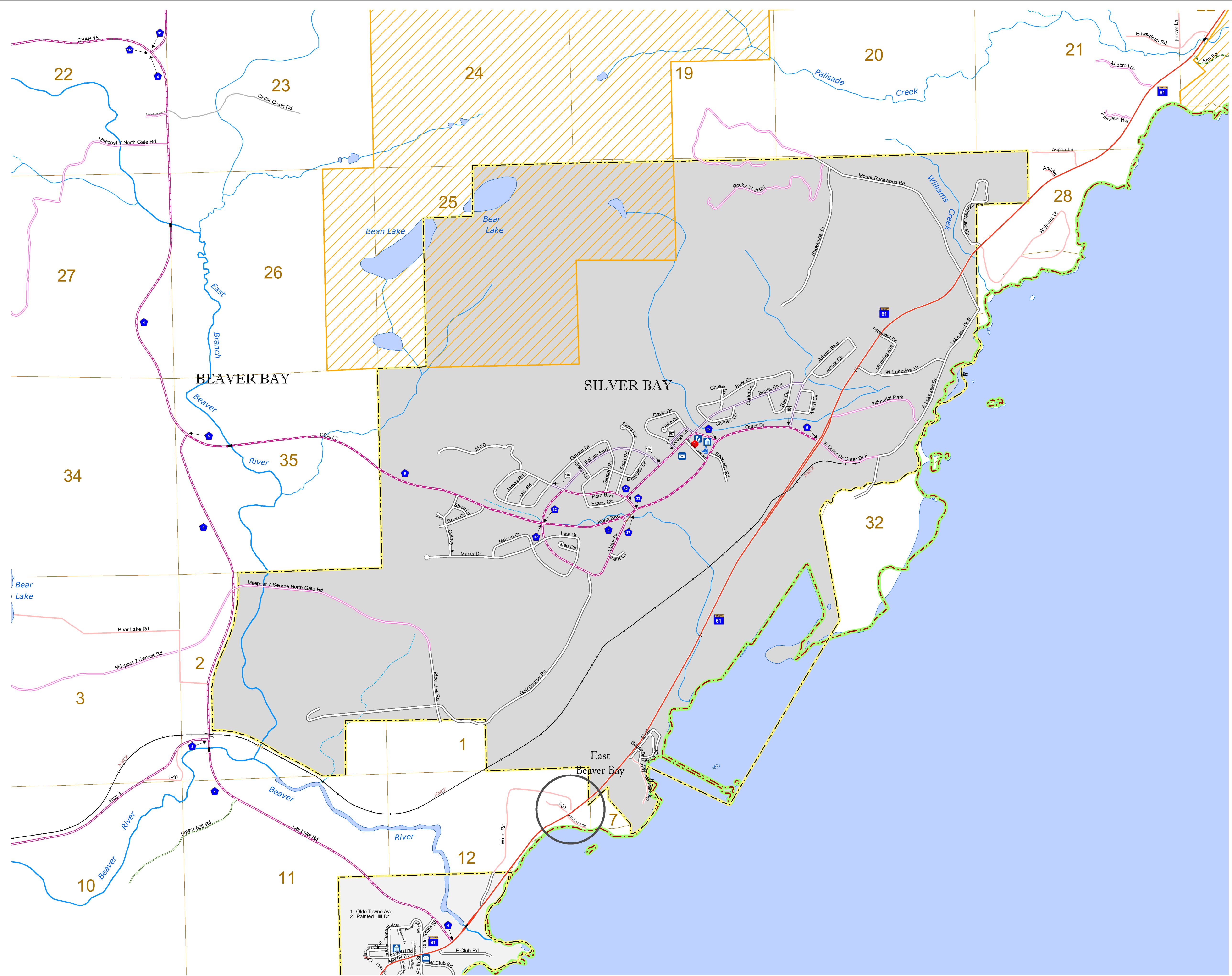
IN COOPERATION WITH
U.S. DEPARTMENT OF TRANSPORTATION
FEDERAL HIGHWAY ADMINISTRATION



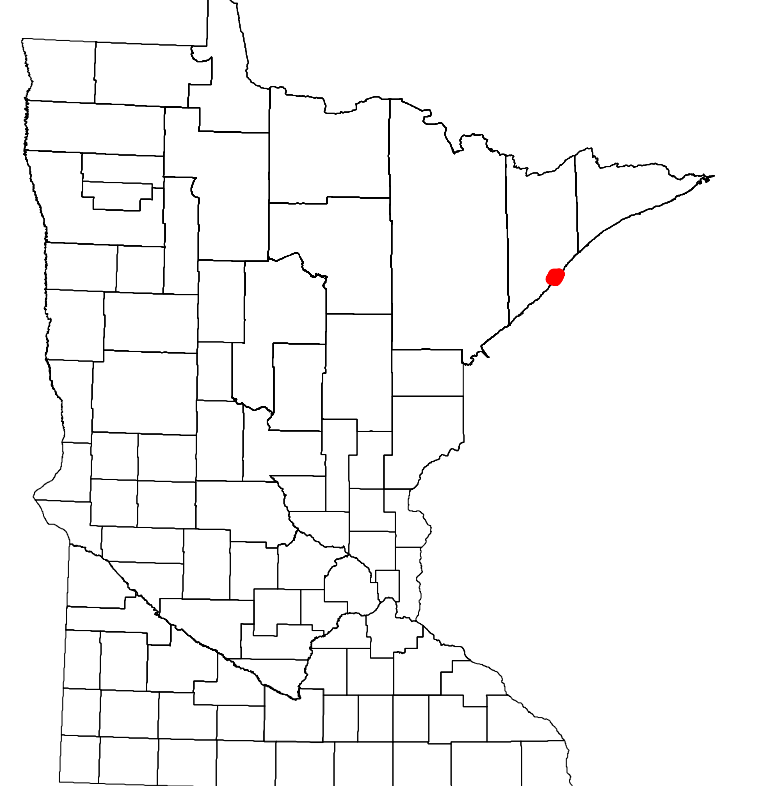
2023

Projection:
Transverse Mercator
NAD 1986
UTM Zone 15

North American Datum
of 1986



ROAD AND ROADWAY FEATURES	PUBLIC SERVICE FEATURES
INTERSTATE	MINOT OFFICE
US HIGHWAY	MINOT TRUCK STATION
STATE AID HIGHWAY	HIGHWAY PATROL DISTRICT OFFICE
COUNTY ROAD	STATE TRAVEL INFORMATION CENTER
MUNICIPAL STREET	REST AREA (Full Service)
MUNICIPAL STATE AID STREET	REST AREA (Quick Turn)
TOWNSHIP ROAD	WAYSIDE (Only on Pkwy/Trkwy)
UNORGANIZED TERRITORY ROAD	PUBLIC ACCESS POINT
RAIMP OR CONNECTOR	LOCAL PARK
INTERSTATE EXIT	FARMS/BOUNDS
GREAT RIVER ROAD	PORT OF ENTRY
OTHER ROAD	PARK AND RIDE LOT
FARMROAD	PUBLIC UNIVERSITY COLLEGE
STATE PARK	PRIVATE UNIVERSITY COLLEGE
NATIONAL PARK	ELEMENTARY SCHOOL
MONUMENT	MIDDLE SCHOOL
STATE FOREST	STATE GAME
NATIONAL FOREST	HIGH SCHOOL
NATIONAL WILDLIFE STATE GAME	
RAILROAD AND RAILWAY FEATURES	AVIATION FEATURES
EMPIRE BUILDER STATION (AMTRAK)	COMMERCIAL AIRPORT
NORTHWEST STATION (COMMUTER)	GENERAL AIRPORT
LIGHT RAIL	AIRSTRIP
BLUE LINE STATION	SEAPLANE
GREEN LINE STATION	AIRPORT RUNWAY
INFRASTRUCTURE FEATURES	CULTURAL FEATURES
LONG BRIDGE (100' OR GREATER SPAN)	STATE HISTORICAL MARKER
MAJOR BRIDGE (20' TO 100' SPAN)	HISTORIC DISTRICT
MINOR BRIDGE (2' TO 20' SPAN)	HISTORIC SITE
ROAD TUNNEL (100' OR GREATER SPAN)	MONUMENT
RAILROAD TUNNEL (100' OR GREATER SPAN)	CETEMERY
RAILROAD BRIDGE (LESSER 100' SPAN)	
SKYWAY	BOUNDARY FEATURES
PEDESTRIAN BRIDGE	TRIBAL LAND
PEDESTRIAN TUNNEL	COUNTY
DAM	MUNICIPALITY
LOCK AND DAM	ADJACENT MUNICIPALITY
	FEDERAL ADJUSTED URBAN AREA (2014)
PUBLIC FACILITIES	
STATE CAPITOL	MILITARY
FEDERAL COURTHOUSE	STATE PARK
COUNTY COURTHOUSE	REGIONAL PARK
ARMORY	NATIONAL FOREST
CITY HALL	NATIONAL AND STATE FOREST
COMMUNITY CENTER	STATE FOREST
ARENA	NATIONAL TRAIL
STADIUM	WILDLIFE REFUGE AREA
POST OFFICE	WILDLIFE MANAGEMENT AREA
POLICE STATION	
FIRE STATION	HYDROLOGIC FEATURES
PUBLIC LIBRARY	RIVER OR STREAM (PERMANENT)
PUBLIC MUSEUM	LAKE, POND OR RESERVOIR
EVENT CENTER	STREAM (INTERMITTENT)
	DRAINAGE DITCH
CITY CENTERS	WETLAND
TRIBAL GOVERNMENT CENTER	ISLAND OR LAND
CITY CENTER	REGIONAL WATERSHED
LOCALLY INCORPORATED PLACE	
UNINCORPORATED COMMUNITY	



To request information from this document in an alternative format, call 651-366-4718 or 1-800-657-3774 (Greater Minnesota); 711 or 1-800-627-3529 (Minnesota Relay). You may also send an e-mail to ADAREquest.dot@state.mn.us. (Please request at least one week in advance.)

LAST EDITED ON 12-10-2023

Population (U.S. Census 2020): 1857