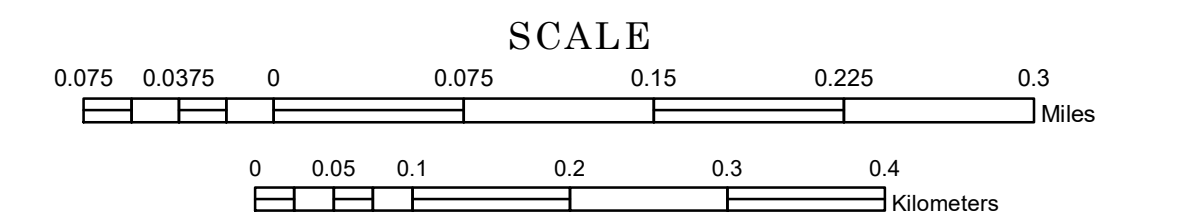


MUNICIPALITY OF GARVIN

PREPARED BY THE
MINNESOTA DEPARTMENT OF TRANSPORTATION
OFFICE OF TRANSPORTATION SYSTEM MANAGEMENT

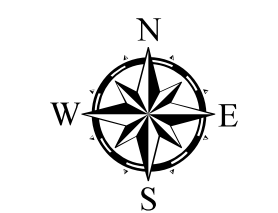
IN COOPERATION WITH
U.S. DEPARTMENT OF TRANSPORTATION
FEDERAL HIGHWAY ADMINISTRATION



1 in = 400 ft

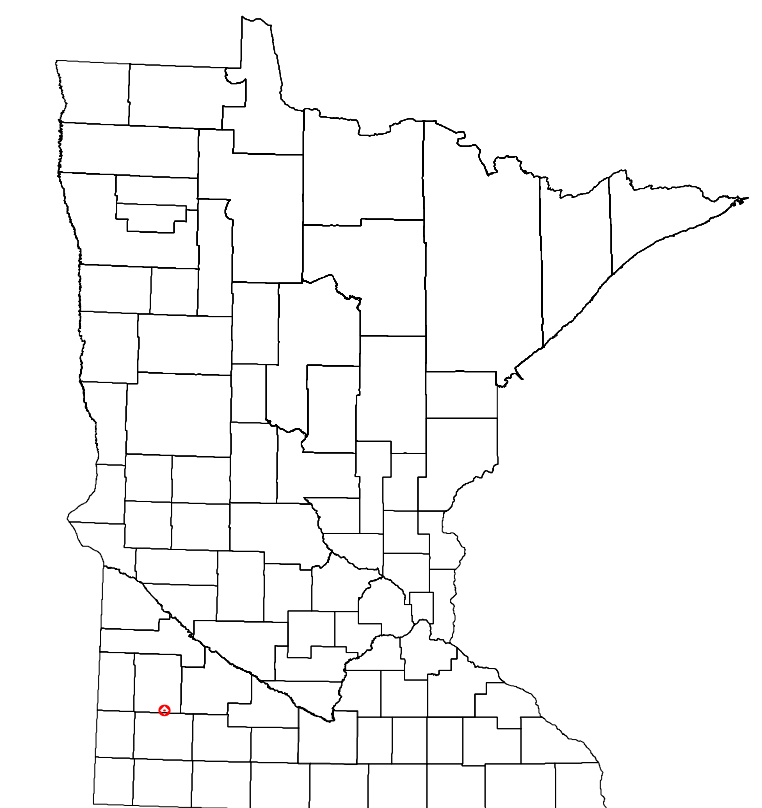
2023

Projection:
Transverse Mercator
NAD 1986
UTM Zone 15

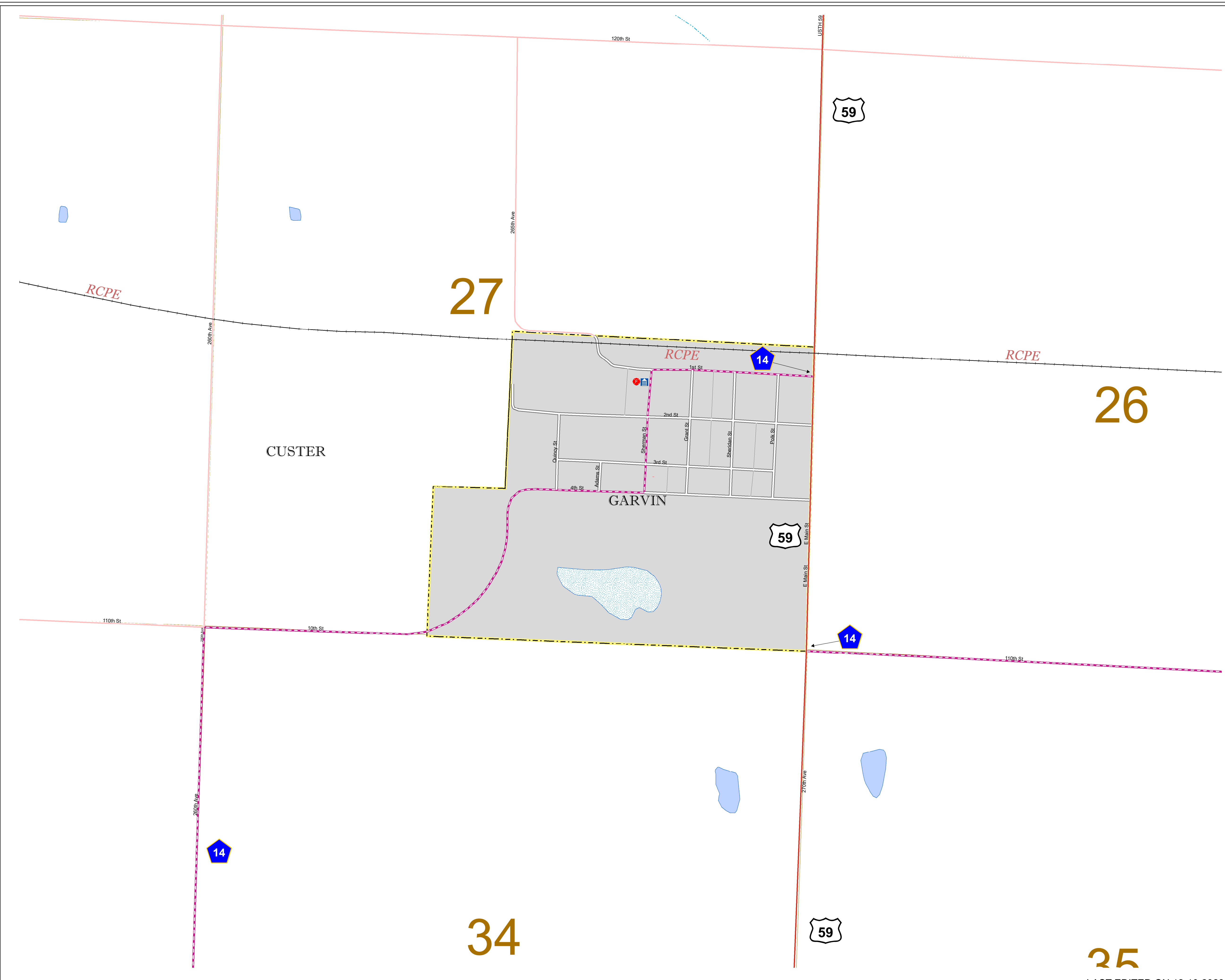


North American Datum
of 1986

| ROAD AND ROADWAY FEATURES | PUBLIC SERVICE FEATURES |
|--|------------------------------------|
| INTERSTATE | MINOT OFFICE |
| US HIGHWAY | MINOT TRUCK STATION |
| BN HIGHWAY | HIGHWAY PATROL DISTRICT OFFICE |
| COUNTY STATE AID HIGHWAY | STATE TRAVEL INFORMATION CENTER |
| COUNTY ROAD | REST AREA (Full Service) |
| MUNICIPAL STREET | REST AREA (Quick Turn) |
| MUNICIPAL STATE AID STREET | WAYSIDE (Only on Pk Trunk) |
| PRIVATE STREET/ROAD | PUBLIC ACCESS POINT |
| TOWNSHIP ROAD | LOCAL PARK |
| UNORGANIZED TERRITORY ROAD | FARMS/GROUNDS |
| RAMP OR CONNECTOR | PORT OF ENTRY |
| INTERSTATE EXIT | PARK AND RIDE LOT |
| GREAT RIVER ROAD | PUBLIC UNIVERSITY/COLLEGE |
| OTHER ROADS | PRIVATE UNIVERSITY/COLLEGE |
| FARMROAD | ELEMENTARY SCHOOL |
| STATE PARK | MIDDLE SCHOOL |
| NATIONAL MONUMENT | HIGH SCHOOL |
| NATIONAL FOREST | |
| NATIONAL WILDLIFE STATE GAME | |
| RAILROAD AND RAILWAY FEATURES | AVIATION FEATURES |
| EMPIRE BUILDER STATION (AMTRAK) | COMMERCIAL AIRPORT |
| NORTHSTAR STATION (COMMUTER) | GENERAL AIRPORT |
| LIGHT RAIL | AIRSTRIP |
| BLUE LINE STATION | SEAPLANE |
| GREEN LINE STATION | AIRPORT RUNWAY |
| INFRASTRUCTURE FEATURES | CULTURAL FEATURES |
| LONG BRIDGE (100' OR GREATER SPAN) | STATE HISTORICAL MARKER |
| MAJOR BRIDGE (20' TO 100' SPAN) | HISTORIC DISTRICT |
| MINOR BRIDGE (2' TO 20' SPAN) | HISTORIC SITE |
| ROAD TUNNEL (100' OR GREATER SPAN) | MONUMENT |
| RAILROAD BRIDGE (100' OR GREATER SPAN) | CEMETERY |
| RAILROAD BRIDGE (LESSER 100' SPAN) | |
| SKYWAY | TRIBAL LAND |
| PEDESTRIAN BRIDGE | COUNTY |
| PEDESTRIAN TUNNEL | MUNICIPALITY |
| DAM | ADJACENT MUNICIPALITY |
| LOCK AND DAM | FEDERAL ADJUSTED URBAN AREA (2014) |
| PUBLIC FACILITIES | BOUNDARY FEATURES |
| STATE CAPITOL | MILITARY |
| FEDERAL COURTHOUSE | STATE PARK |
| COUNTY COURTHOUSE | REGIONAL PARK |
| CITY HALL | NATIONAL FOREST |
| TOWN HALL | NATIONAL AND STATE FOREST |
| COMMUNITY CENTER | STATE FOREST |
| ARENA | NATIONAL TRAIL |
| STADIUM | WILDLIFE REFUGE AREA |
| POST OFFICE | WILDLIFE MANAGEMENT AREA |
| POLICE STATION | |
| FIRE STATION | |
| PUBLIC LIBRARY | |
| PUBLIC MUSEUM | |
| EVENT CENTER | |
| CITY CENTERS | HYDROLOGIC FEATURES |
| TRIBAL GOVERNMENT CENTER | RIVER OR STREAM (PERMANENT) |
| CITY CENTER | LAKE, POND OR RESERVOIR |
| LOCALLY INCORPORATED PLACE | STREAM (PERMANENT) |
| UNINCORPORATED COMMUNITY | DRAINAGE DITCH |
| | WETLAND |
| | ISLAND OR LAND |
| | REGIONAL WATERSHED |



Population (U.S. Census 2020): 124



To request information from this document in an alternative format, call 651-366-4718 or 1-800-657-3774 (Greater Minnesota); 711 or 1-800-627-3529 (Minnesota Relay). You may also send an e-mail to ADArequest.dot@state.mn.us. (Please request at least one week in advance.)

LAST EDITED ON 12-10-2023