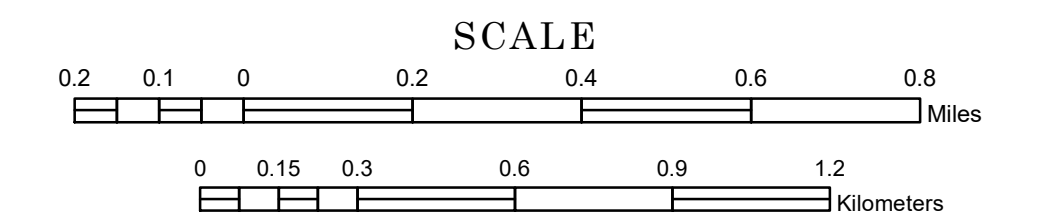


# MUNICIPALITY OF CLEAR LAKE

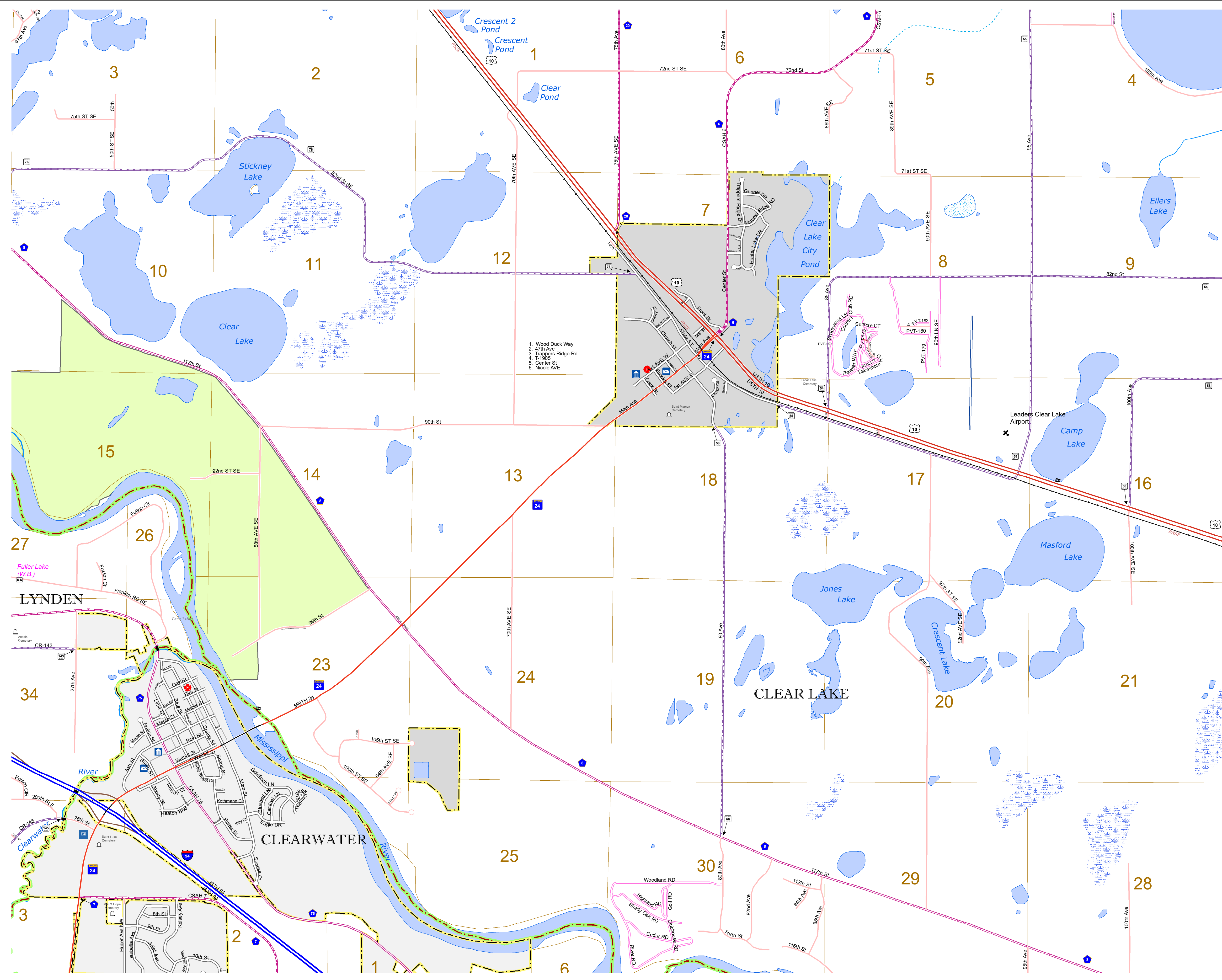
PREPARED BY THE  
MINNESOTA DEPARTMENT OF TRANSPORTATION  
OFFICE OF TRANSPORTATION SYSTEM MANAGEMENT

IN COOPERATION WITH  
U.S. DEPARTMENT OF TRANSPORTATION  
FEDERAL HIGHWAY ADMINISTRATION

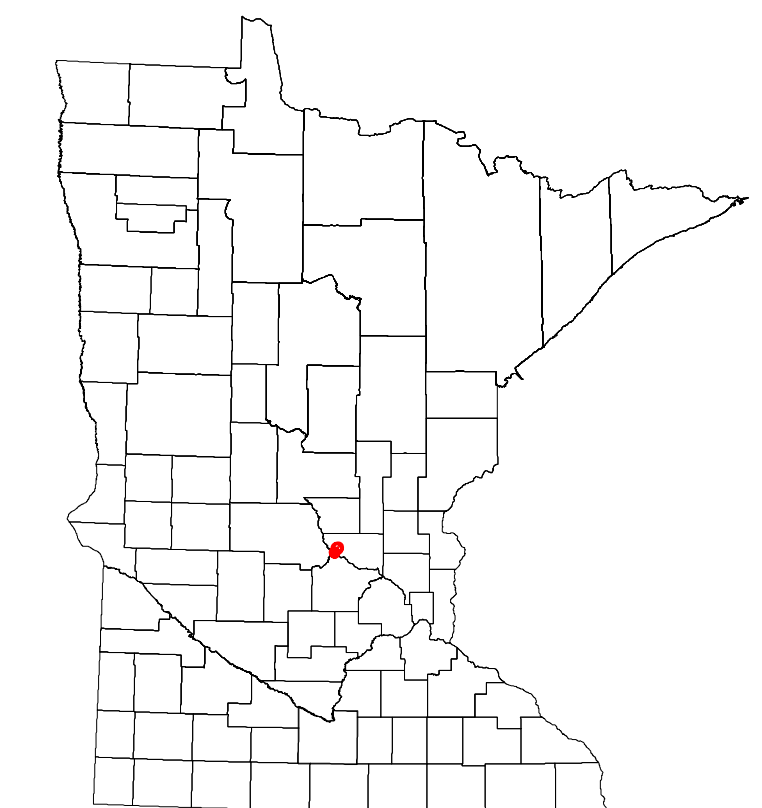


1 in = 1,200 ft  
**2022**

Projection:  
Transverse Mercator  
NAD 1986  
UTM Zone 15



ROAD AND ROADWAY FEATURES	PUBLIC SERVICE FEATURES
INTERSTATE	MINOT OFFICE
US HIGHWAY	MINOT TRUCK STATION
STATE AID HIGHWAY	HIGHWAY PATROL DISTRICT OFFICE
COUNTY ROAD	STATE TRAVEL INFORMATION CENTER
MUNICIPAL STREET	REST AREA (Full Service)
MUNICIPAL STATE AID STREET	REST AREA (Quick Turn)
PRIVATE STREET/ROAD	WAYSIDE (Only on Pkwy/Trk+1)
UNORGANIZED TERRITORY ROAD	PUBLIC ACCESS POINT
RAMP OR CONNECTOR	LOCAL PARK
INTERSTATE EXIT	FARMS/BOUNDS
GREAT RIVER ROAD	PORT OF ENTRY
OTHER ROAD	PARK AND RIDE LOT
RAILROAD AND RAILWAY FEATURES	PUBLIC UNIVERSITY COLLEGE
EMPIRE BUILDER STATION (AMTRAK)	PRIVATE UNIVERSITY COLLEGE
NORTHWEST STATION (COMMUTER)	ELEMENTARY SCHOOL
LIGHT RAIL	MIDDLE SCHOOL
BLUE LINE STATION	HIGH SCHOOL
GREEN LINE STATION	AVIATION FEATURES
INFRASTRUCTURE FEATURES	COMMERCIAL AIRPORT
LONG BRIDGE (107' OR GREATER SPAN)	GENERAL AIRPORT
MAJOR BRIDGE (20' TO 107' SPAN)	AIRSTRIP
MINOR BRIDGE (< 20' SPAN)	SEAPLANE
ROAD TUNNEL (100' OR GREATER SPAN)	AIRPORT RUNWAY
RAILROAD TUNNEL (100' OR GREATER SPAN)	CULTURAL FEATURES
RAILROAD BRIDGE (LENGTH 100' SPAN)	STATE HISTORICAL MARKER
SKYWAY	HISTORIC DISTRICT
PEDESTRIAN BRIDGE	HISTORIC SITE
PEDESTRIAN TUNNEL	MONUMENT
DAM	CEMETERY
LOCK AND DAM	BOUNDARY FEATURES
PUBLIC FACILITIES	TRIBAL LAND
STATE CAPITOL	COUNTY
FEDERAL COURTHOUSE	MUNICIPALITY
COUNTY COURTHOUSE	ADJACENT MUNICIPALITY
ARMORY	FEDERAL ADJUSTED URBAN AREA (2014)
CITY HALL	MILITARY
ARENA	STATE PARK
STADIUM	REGIONAL PARK
POST OFFICE	NATIONAL FOREST
POLICE STATION	NATIONAL AND STATE FOREST
FIRE STATION	STATE FOREST
PUBLIC LIBRARY	NATIONAL TRAIL
PUBLIC MUSEUM	NATIONAL TRAIL
EVENT CENTER	WILDLIFE REFUGE AREA
CITY CENTERS	WILDLIFE MANAGEMENT AREA
TRIBAL GOVERNMENT CENTER	HYDROLOGIC FEATURES
LOCALLY INCORPORATED PLACE	RIVER OR STREAM (PERMANENT)
UNINCORPORATED COMMUNITY	LAKE, POND OR RESERVOIR
	STREAM (PERMANENT)
	WETLAND
	ISLAND OR LAND
	REGIONAL WATERSHED



To request information from this document in an alternative format, call 651-366-4718 or 1-800-657-3774 (Greater Minnesota); 711 or 1-800-627-3529 (Minnesota Relay). You may also send an e-mail to ADarequest.dot@state.mn.us. (Please request at least one week in advance.)

LAST EDITED ON 1-08-2023

Population (U.S. Census 2020): 641