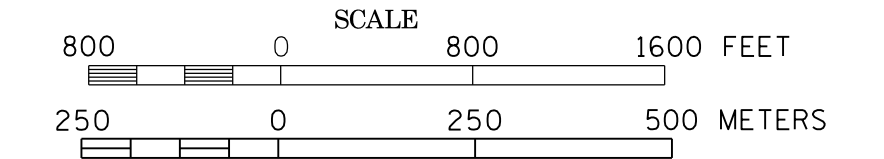
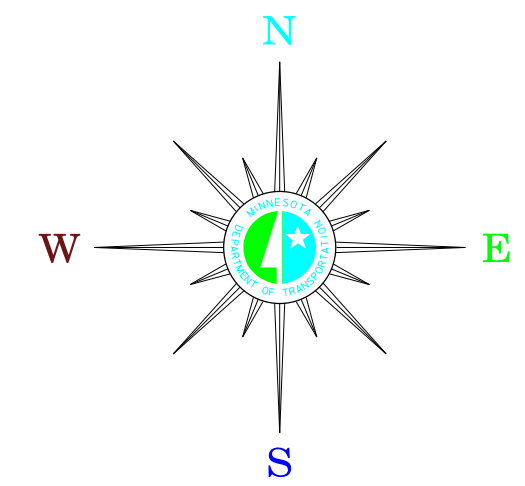


# MUNICIPALITIES OF YELLOW MEDICINE CO.

PREPARED BY THE  
MINNESOTA DEPARTMENT OF TRANSPORTATION  
OFFICE OF TRANSPORTATION DATA & ANALYSIS  
IN COOPERATION WITH  
U.S. DEPARTMENT OF TRANSPORTATION  
FEDERAL HIGHWAY ADMINISTRATION



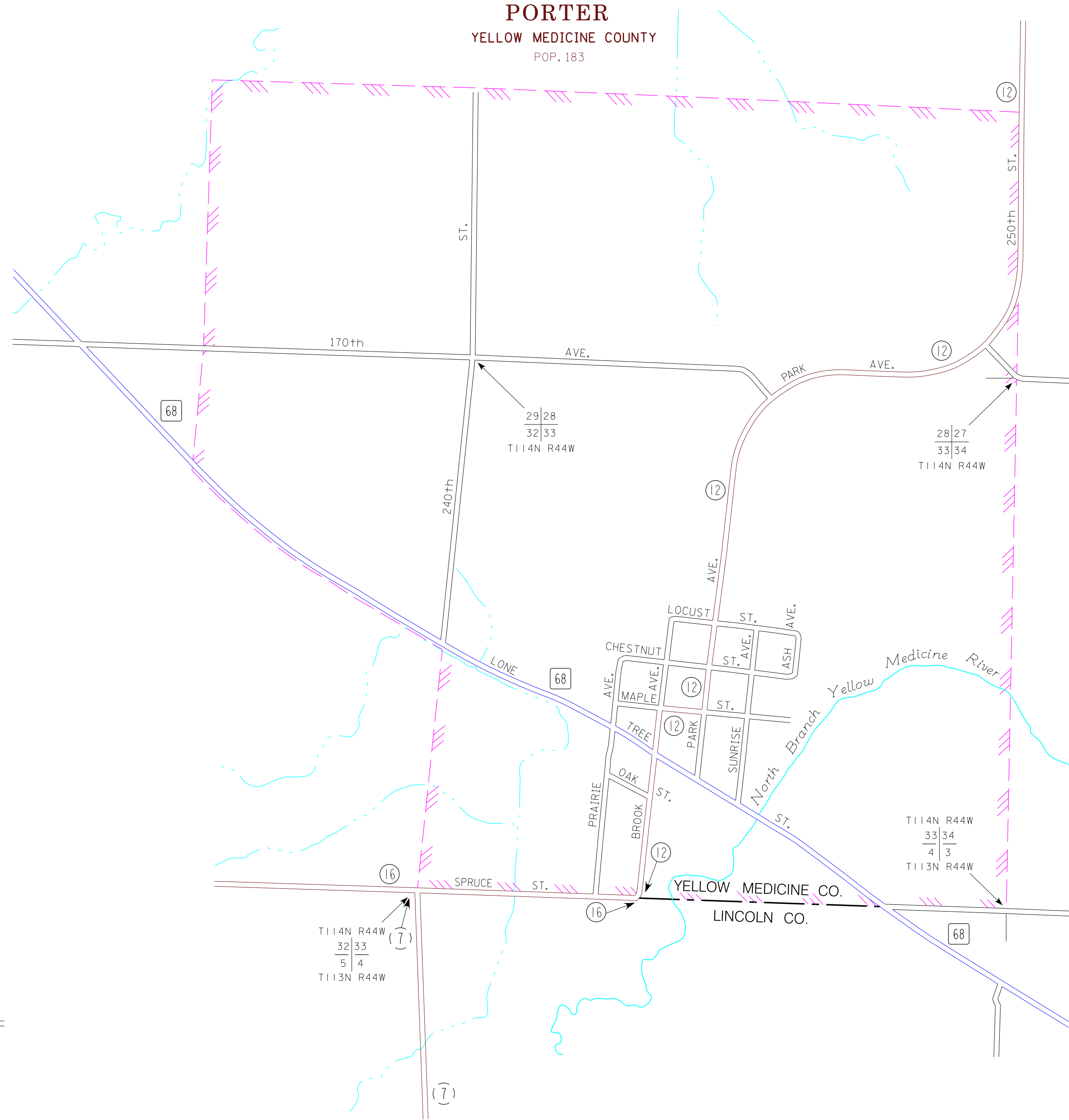
2015  
BASIC DATA - 2013



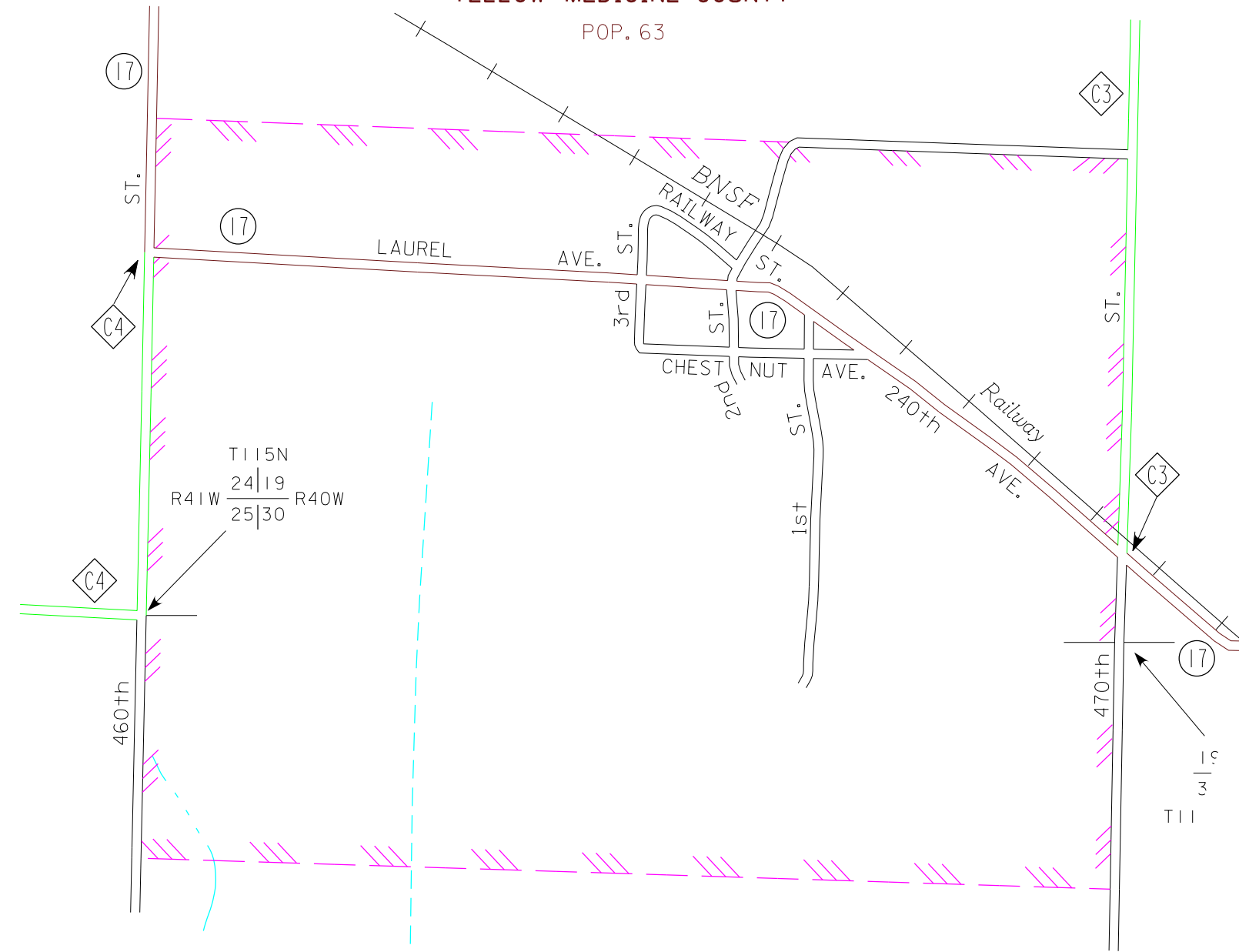
### LEGEND

- INTERSTATE TRUNK HIGHWAY..... (I-95)
- U.S. TRUNK HIGHWAY..... (U.S. 168)
- STATE TRUNK HIGHWAY..... (Mn 274)
- COUNTY STATE AID HIGHWAY..... (Mn 20)
- COUNTY ROAD..... (Mn 42)
- PUBLIC ROAD.....
- PRIVATE ROAD.....
- CORPORATE LIMITS.....

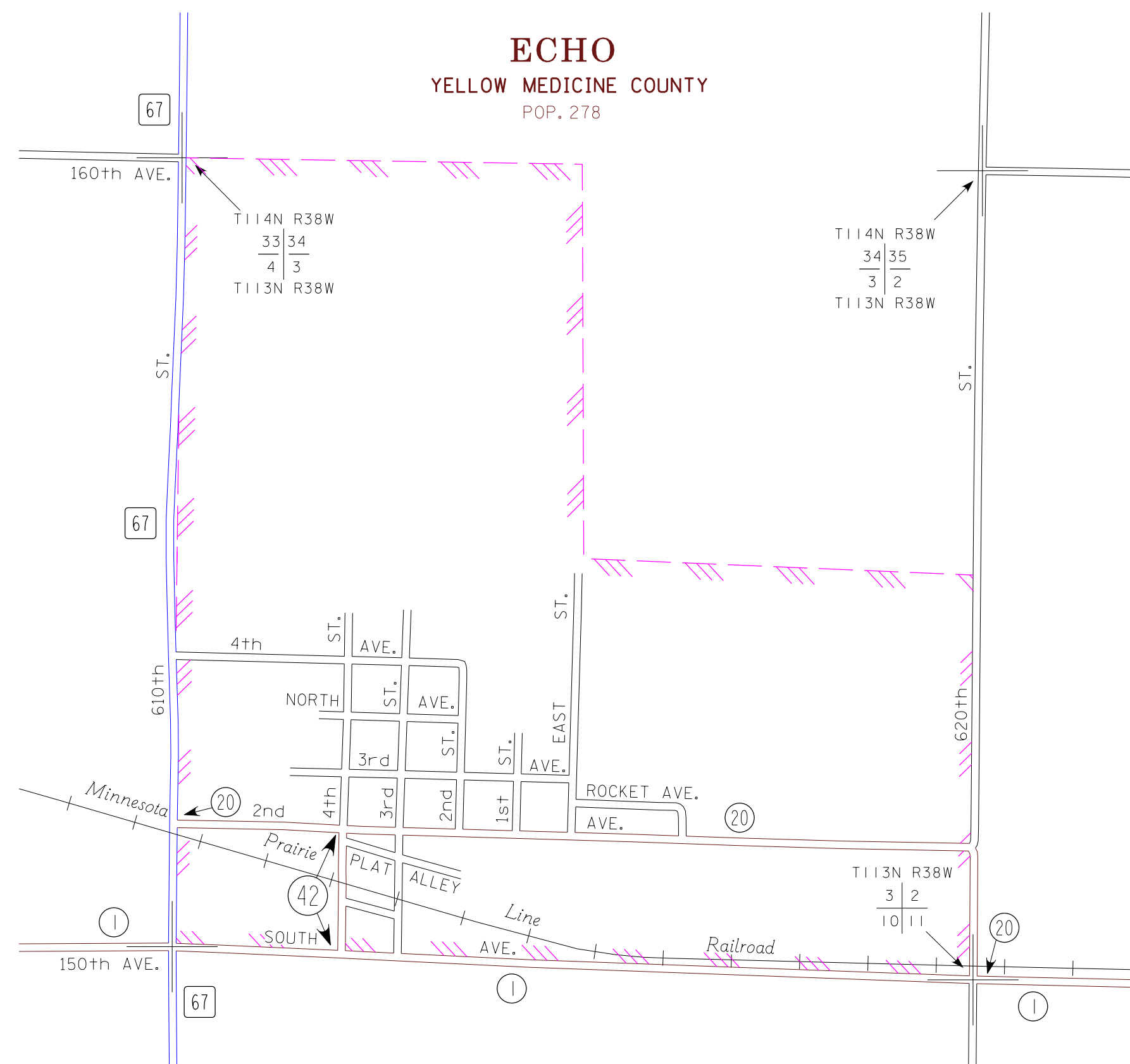
## PORTER YELLOW MEDICINE COUNTY POP. 183



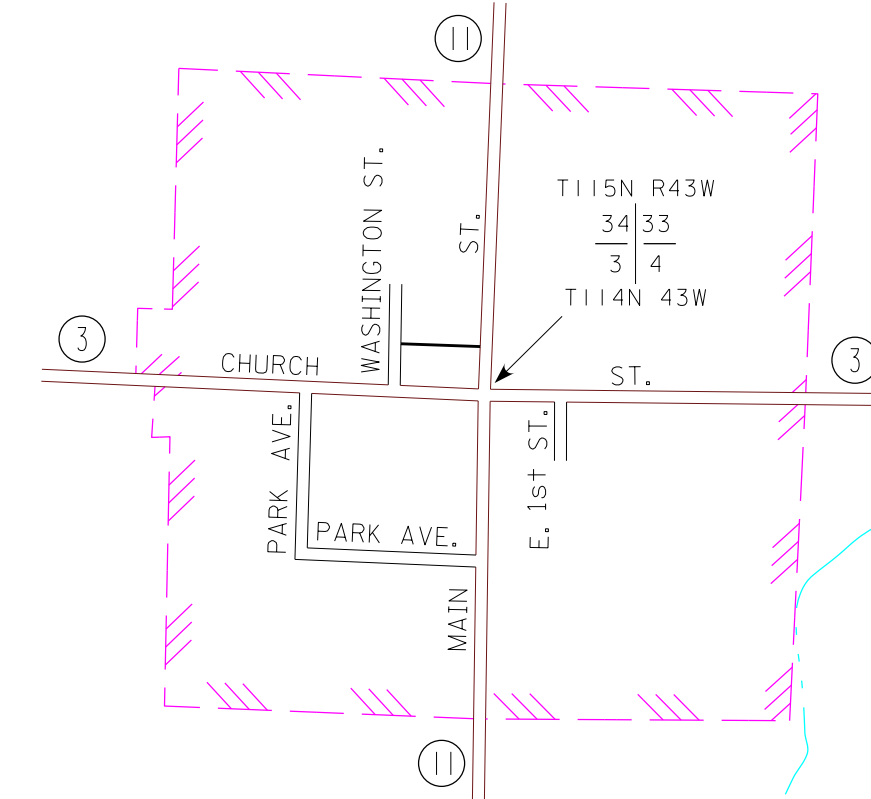
## HAZEL RUN YELLOW MEDICINE COUNTY POP. 63



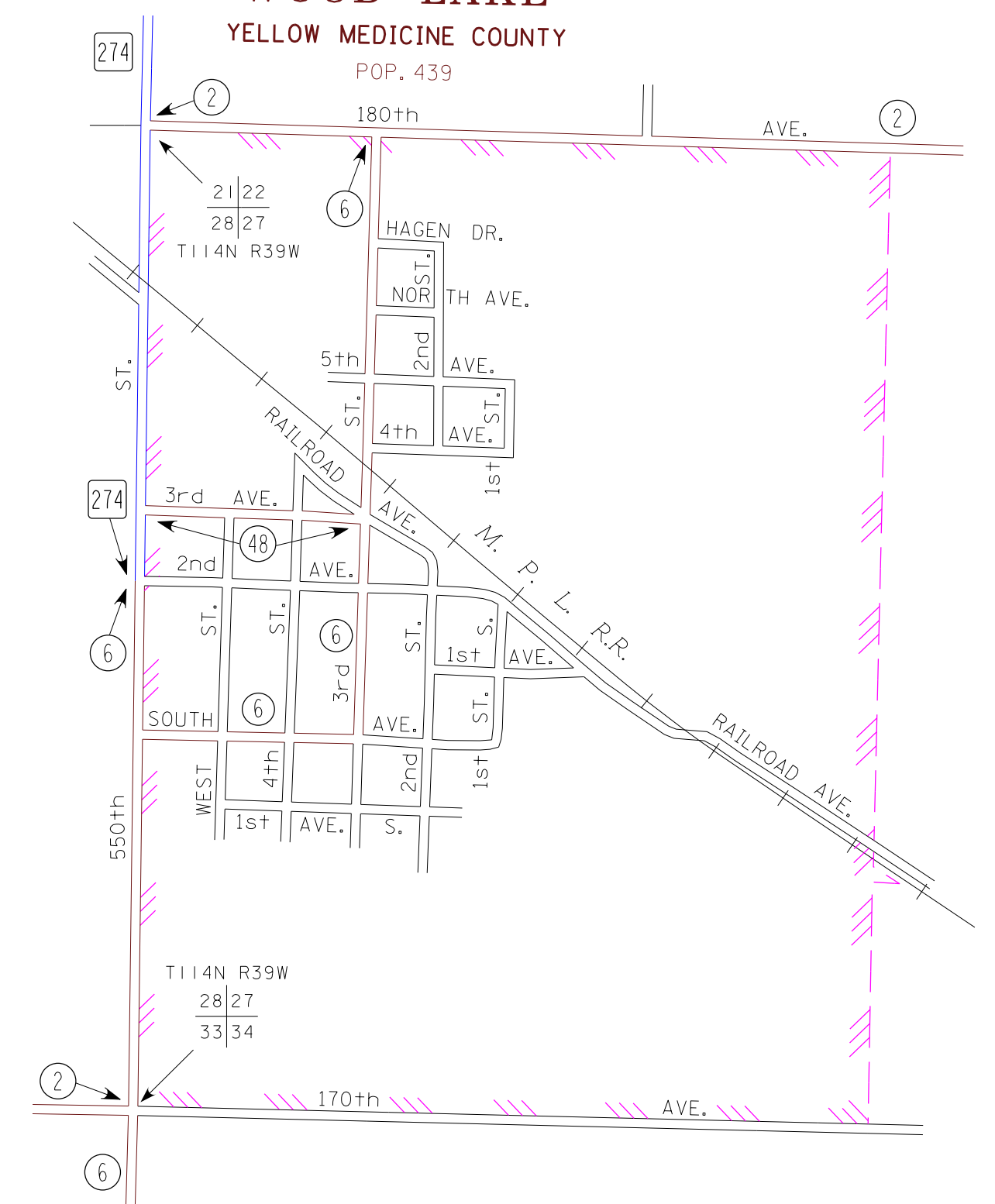
## ECHO YELLOW MEDICINE COUNTY POP. 278



## ST. LEO YELLOW MEDICINE COUNTY POP. 100



## WOOD LAKE YELLOW MEDICINE COUNTY POP. 439



MUNICIPALITIES SHOWN  
ON THIS SHEET

- ECHO
- HAZEL RUN
- PORTER
- ST. LEO
- WOOD LAKE

To request information from this document in an alternative format, call 651-366-4718, or 1-800-657-3774 (Greater Minnesota); 711 or 1-800-627-3529 (Minnesota Relay). You may also send an e-mail to [ADRequest.dot@state.mn.us](mailto:ADRequest.dot@state.mn.us). (Please request at least one week in advance).

NOTE: 2010 U.S. CENSUS FIGURES SHOWN FOR ALL MUNICIPALITIES UNLESS OTHERWISE STATED.