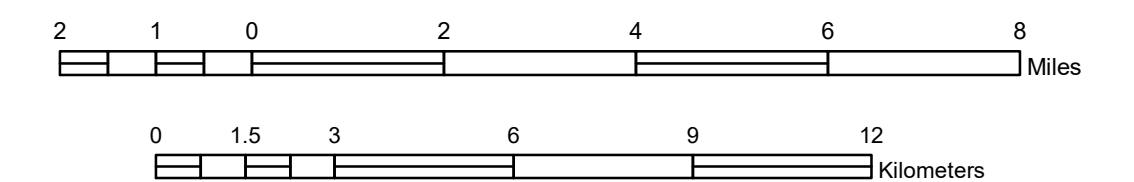


GENERAL HIGHWAY MAP BENTON COUNTY MINNESOTA

PREPARED BY THE
MINNESOTA DEPARTMENT OF TRANSPORTATION
OFFICE OF TRANSPORTATION SYSTEM MANAGEMENT
IN COOPERATION WITH
U.S. DEPARTMENT OF TRANSPORTATION
FEDERAL HIGHWAY ADMINISTRATION

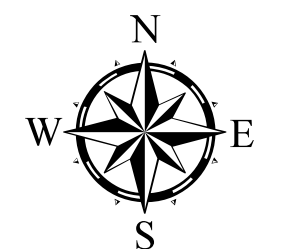
SCALE



1 in = 2 miles

2023

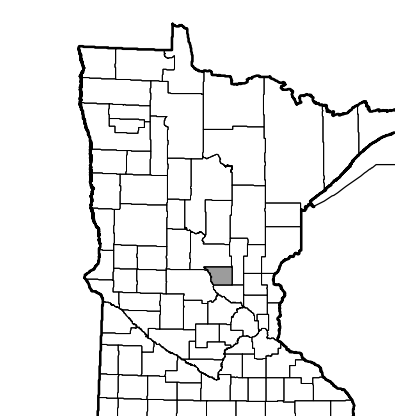
Projection:
Transverse Mercator
NAD 1986
UTM Zone 15



North American Datum
of 1986

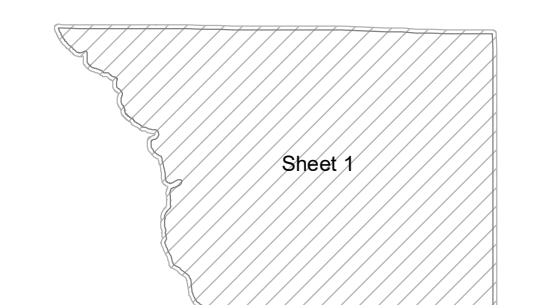
ROAD AND ROADWAY FEATURES	
INTERSTATE	CONCRETE
US HIGHWAY	BITUMINOUS
MINN HIGHWAY	GRAVEL
COUNTY STATE AID HIGHWAY	DIRT/UNIMPROVED
COUNTY ROAD	UNKNOWN
TOWNSHIP ROAD	PROPOSED
UNORGANIZED TERRITORY ROAD	RAMP OR CONNECTOR
PRIVATE ROAD	INTERSTATE EXT.
OTHER ROADS:	GREAT RIVER ROAD
MUNICIPAL	
Military	National Forest
National Park	Monument
National Wildlife Refuge	State Park
State Game	
RAILROAD AND RAILWAY FEATURES	
EMPIRE BUILDER STATION (AMTRAK)	
NORTHSTAR STATION (COMMUTER)	
INFRASTRUCTURE FEATURES	
LONG BRIDGE (100' OR GREATER SPAN)	
MAJOR BRIDGE (20' TO 100' SPAN)	
MINOR BRIDGE (5' TO 20' SPAN)	
DAM	
LOCK AND DAM	
CITY CENTERS	
STATE CAPITAL	COUNTY SEAT
CITY CENTER	TOWNSHIP COMMUNITY
PUBLIC SERVICE FEATURES	
MINN DOT OFFICE	
MINN DOT TRUCK STATION	
HIGHWAY PATROL DISTRICT OFFICE	
STATE TRAVEL INFORMATION CENTER	
REST AREA (FULL SERVICES)	
REST AREA (VAULT TOILET)	
WAYSIDE (VAULT OR PVI TOILET)	
PARK AND RIDE LOT	
PORT OF ENTRY	
PUBLIC ACCESS POINT	
PUBLIC UNIVERSITY AND COLLEGE	
PRIVATE UNIVERSITY AND COLLEGE	
FARMLANDS	
CULTURAL FEATURES	
STATE HISTORICAL MARKER	
HISTORIC DISTRICT	
HISTORIC SITE	
MONUMENT	
CEMETERY	
AVIATION FEATURES	
COMMERCIAL AIRPORT (COMPLETE FACILITIES)	
GENERAL AIRPORT (LIMITED FACILITIES)	
ARSTRIP (NO FACILITIES)	
SEAPLANE	
AIRPORT RUNWAY	
BOUNDARY FEATURES	
TRIBAL LAND	
STATE OF MINNESOTA	
COUNTY	
MUNICIPALITY	
UNORGANIZED TERRITORY	
FEDERAL ADJUSTED URSAN AREA (2014)	
CIVIL TOWNSHIP	
CONGRESSIONAL TOWNSHIP	
SECTION	
MILITARY	
VOYAGEURS NATIONAL PARK	
BOUNDARY WATERS CANOE AREA WILDERNESS	
STATE PARK	
NATIONAL FOREST	
NATIONAL FOREST	
NATIONAL AND STATE FOREST	
STATE FOREST	
NATIONAL TRAIL	
WILDLIFE REFUGE AREA	
WILDLIFE MANAGEMENT AREA	
HYDROLOGIC FEATURES	
LAKE, POND OR RESERVOIR	
RIVER OR STREAM (PERMANENT)	
STREAM (INTERMITTENT)	
DRAINAGE DITCH	
WETLAND	
ISLAND OR LAND	
REGIONAL WATERSHED	

Outline Map of Minnesota showing location of the County within the state.



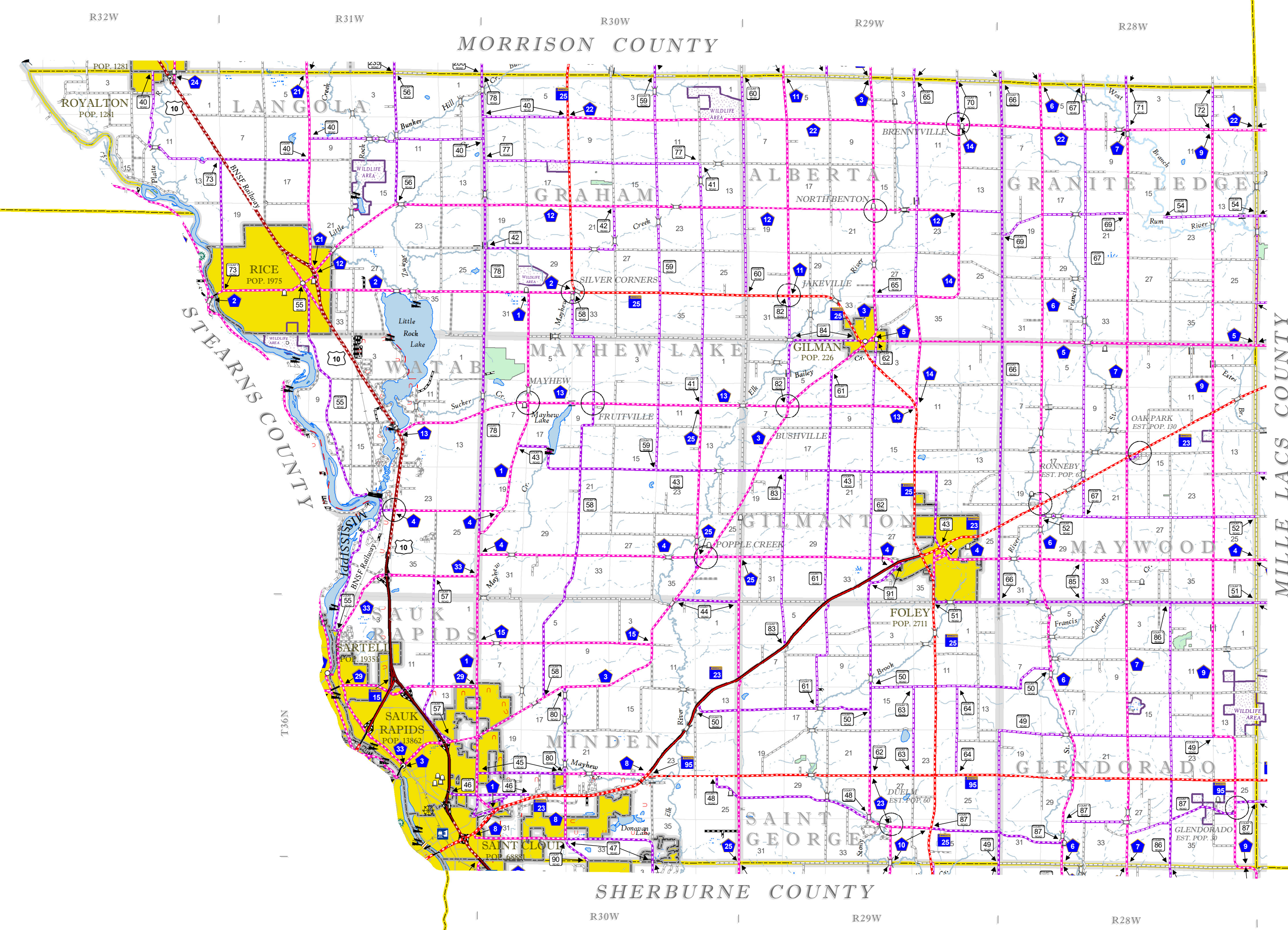
Outline Map of the County.

Area of this County 412.84 Sq. Miles
Land Area 408.3 Sq. Miles
2020 Total County Population 41,379



LAST EDITED ON 1-02-2024

SHEET 1 OF 1



To request information from this document in an alternative format, call 651-366-4718 or 1-800-657-3774 (Greater Minnesota); 711 or 1-800-627-3529 (Minnesota Relay). You may also send an e-mail to ADRequest.dot@state.mn.us. (Please request at least one week in advance.)

NOTE: FOR DETAIL OF COUNTY STATE AID HIGHWAYS AND COUNTY ROADS IN INCORPORATED PLACE, SEE MAPS OF MUNICIPALITIES.