

GENERAL HIGHWAY MAP COOK COUNTY MINNESOTA

PREPARED BY THE
MINNESOTA DEPARTMENT OF TRANSPORTATION
OFFICE OF TRANSPORTATION SYSTEM MANAGEMENT
IN COOPERATION WITH
U.S. DEPARTMENT OF TRANSPORTATION
FEDERAL HIGHWAY ADMINISTRATION

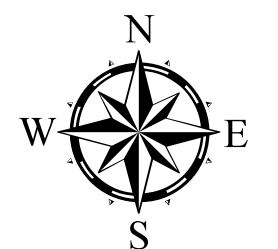
SCALE



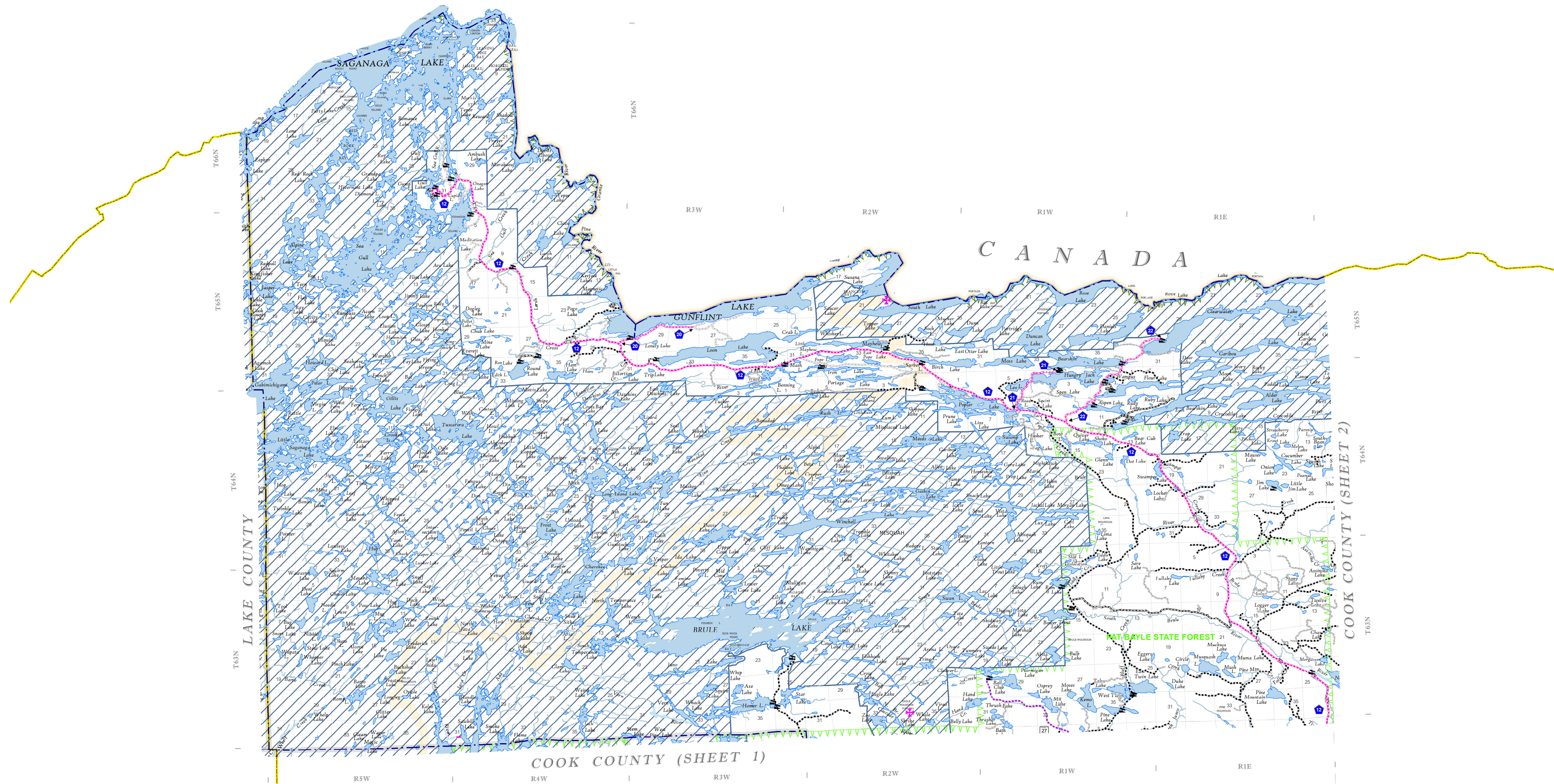
1 in = 2 miles

2023

Projection:
Transverse Mercator
NAD 1986
UTM Zone 15



North American Datum
of 1986



ROAD AND ROADWAY FEATURES	
INTERSTATE	CONCRETE
US HIGHWAY	BITUMINOUS
ML HIGHWAY	GRAVEL
COUNTY STATE AID HIGHWAY	DIRT/UNIMPROVED
COUNTY ROAD	UNKNOWN
TRAIL ROAD	PROPOSED
TOWNSHIP ROAD	RAMP OR CONNECTOR
UNORGANIZED TERRITORY ROAD	INTERSTATE EXT.
PRIVATE ROAD	GREAT RIVER ROAD
OTHER ROADS:	
Municipal	National Forest
National Park	State Park
Monument	State Forest
National Wildlife	State Game

RAILROAD AND RAILWAY FEATURES	
EMPIRE BUILDER STATION (AMTRAK)	
NORTHSTAR STATION (COMMUTER)	

INFRASTRUCTURE FEATURES	
LONG BRIDGE (100' OR GREATER SPAN)	
MAJOR BRIDGE (20' TO 100' SPAN)	
MINOR BRIDGE (5' TO 20' SPAN)	
DAM	
LOCK AND DAM	

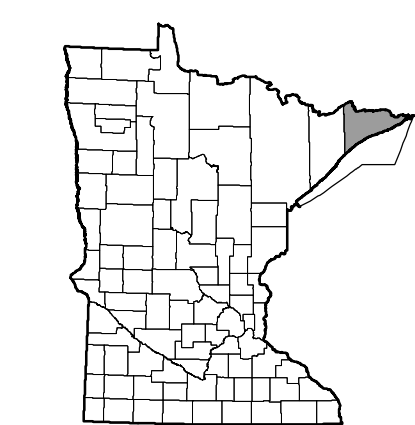
CITY CENTERS	
STATE CAPITAL	
COUNTY BEAT	
CITY CENTER	
TOWNSHIP COMMUNITY	
PUBLIC SERVICE FEATURES	
MINIOT OFFICE	
MINIOT TRUCK STATION	
HIGHWAY PATROL DISTRICT OFFICE	
STATE TRAVEL INFORMATION CENTER	
REST AREA (FULL SERVICES)	
REST AREA (VAULT TOILET)	
WAYSIDE (VAULT OR PVI TOILET)	
PARK AND RIDE LOT	
PORT OF ENTRY	
PUBLIC ACCESS POINT	
PUBLIC UNIVERSITY AND COLLEGE	
PRIVATE UNIVERSITY AND COLLEGE	
FARMGROUNDS	
CULTURAL FEATURES	
STATE HISTORIC MARKER	
HISTORIC DISTRICT	
HISTORIC SITE	
MONUMENT	
CEMETERY	

BOUNDARY FEATURES	
TRIBAL LAND	
STATE OF MINNESOTA	
COUNTY	
MUNICIPALITY	
UNORGANIZED TERRITORY	
FEDERAL ADJUSTED URBAN AREA (2014)	
CIVIL TOWNSHIP	
CONGRESSIONAL TOWNSHIP	
SECTION	
MILITARY	
VOYAGEURS NATIONAL PARK	
BOUNDARY WATERS CANADA AREA WILDERNESS	
STATE PARK	
REGIONAL PARK	
NATIONAL FOREST	
NATIONAL AND STATE FOREST	
STATE FOREST	
NATIONAL TRAIL	
WILDLIFE REFUGE AREA	
WILDLIFE MANAGEMENT AREA	

HYDROLOGIC FEATURES	
LAKE, POND OR RESERVOIR	
RIVER OR STREAM (PERMANENT)	
STREAM (INTERMITTENT)	
DRAINAGE DITCH	
WETLAND	
ISLAND OR LAND	
REGIONAL WATERSHED	

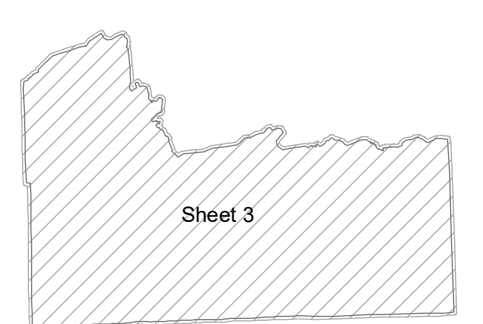
AVIATION FEATURES	
COMMERCIAL AIRPORT (Complete Facilities)	
GENERAL AIRPORT (Limited Facilities)	
AIRSTRIP (No Facilities)	
SEAPLANE	
AIRPORT RUNWAY	

Outline Map of Minnesota showing location of the County within the state.



Outline Map of the County.

Area of this County 1,606.48 Sq. Miles
Land Area 1,452.28 Sq. Miles
2020 Total County Population 5600



To request information from this document in an alternative format, call 651-366-4718 or 1-800-657-3774 (Greater Minnesota); 711 or 1-800-627-3529 (Minnesota Relay). You may also send an e-mail to ADRequest.dot@state.mn.us. (Please request at least one week in advance.)

NOTE: FOR DETAIL OF COUNTY STATE AID HIGHWAYS AND COUNTY ROADS IN INCORPORATED PLACE, SEE MAPS OF MUNICIPALITIES.

LAST EDITED ON 1-02-2024

SHEET 3 OF 3