

GENERAL HIGHWAY MAP LAC QUI PARLE COUNTY MINNESOTA

PREPARED BY THE
MINNESOTA DEPARTMENT OF TRANSPORTATION
OFFICE OF TRANSPORTATION SYSTEM MANAGEMENT
IN COOPERATION WITH
U.S. DEPARTMENT OF TRANSPORTATION
FEDERAL HIGHWAY ADMINISTRATION

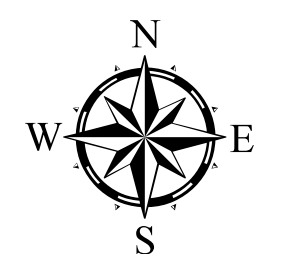
SCALE



1 in = 2 miles

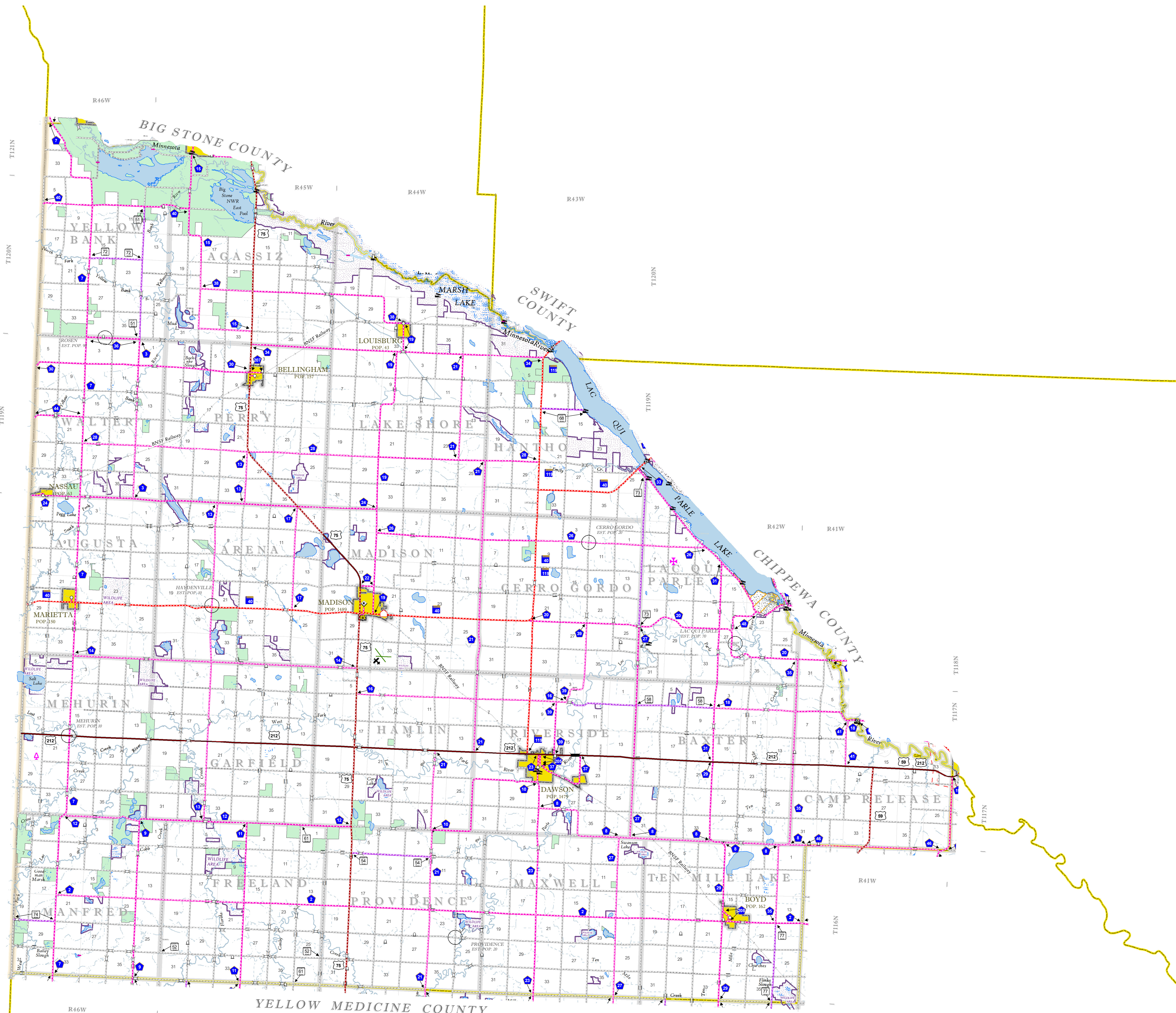
2023

Projection:
Transverse Mercator
NAD 1986
UTM Zone 15



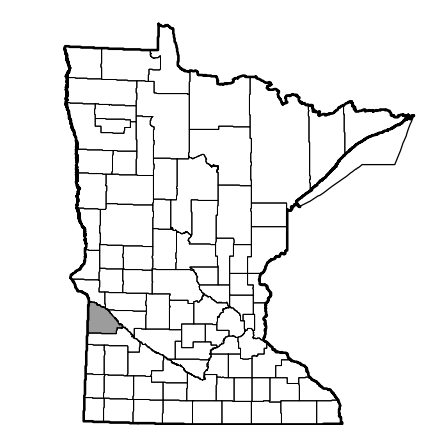
North American Datum
of 1986

S O U T H D A K O T A



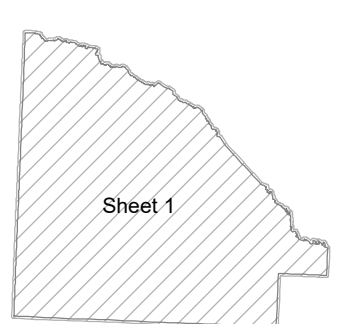
ROAD AND ROADWAY FEATURES	
INTERSTATE	CONCRETE
US HIGHWAY	BITUMINOUS
STATE AID HIGHWAY	GRAVEL
COUNTY ROAD	DIRT/UNIMPROVED
TOWNSHIP ROAD	UNKNOWN
UNORGANIZED TERRITORY ROAD	PROPOSED
PRIVATE ROAD	RAMP OR CONNECTOR
OTHER ROADS	INTERSTATE EXT.
MUNICIPAL	GREAT RIVER ROAD
Military	State Park
National Forest	State Forest
National Wildlife	State Game
RAILROAD AND RAILWAY FEATURES	
EMPIRE BUILDER STATION (AMTRAK)	AVIATION FEATURES
NORTHSTAR STATION (COMMUTER)	COMMERCIAL AIRPORT (Complete Facilities)
INFRASTRUCTURE FEATURES	
LONG BRIDGE (100' or Greater Span)	GENERAL AIRPORT (Limited Facilities)
MAJOR BRIDGE (20' to 100' Span)	ARSTRIP (No Facilities)
MINOR BRIDGE (5' to 20' Span)	SEAPLANE
DAM	AIRPORT RUNWAY
LOCK AND DAM	BOUNDARY FEATURES
STATE CAPITAL	TRIBAL LAND
COUNTY BEAT	STATE OF MINNESOTA
CITY CENTER	COUNTY
TOWNSHIP COMMUNITY	MUNICIPALITY
PUBLIC SERVICE FEATURES	
MINOT OFFICE	FEDERAL ADJUSTED URBAN AREA (2014)
MINOT TRUCK STATION	CIVIL TOWNSHIP
HIGHWAY PATROL DISTRICT OFFICE	CONGRESSIONAL TOWNSHIP
STATE TRAVEL INFORMATION CENTER	SECTION
REST AREA (Full Service)	MILITARY
REST AREA (Vault Toilet)	VOYAGEURS NATIONAL PARK
WAYSIDE (Vault or Pit Toilet)	BOUNDARY WATERS CANTON AREA WILDERNESS
PARK AND RIDE LOT	STATE PARK
PUBLIC ACCESS POINT	NATIONAL FOREST
PUBLIC UNIVERSITY AND COLLEGE	NATIONAL AND STATE FOREST
PRIVATE UNIVERSITY AND COLLEGE	STATE FOREST
FARMGROUNDS	NATIONAL TRAIL
CULTURAL FEATURES	
STATE HISTORICAL MARKER	WILDLIFE REFUGE AREA
HISTORIC DISTRICT	WILDLIFE MANAGEMENT AREA
HISTORIC SITE	WETLAND
MONUMENT	ISLAND OR LAND
CEMETERY	REGIONAL WATERSHED

Outline Map of Minnesota showing location of the County within the state.



Outline Map of the County.

Area of this County 778.84 Sq. Miles
Land Area 765.02 Sq. Miles
2020 Total County Population 6719



LAST EDITED ON 1-02-2024

SHEET 1 OF 1

To request information from this document in an alternative format, call 651-366-4718 or 1-800-657-3774 (Greater Minnesota); 711 or 1-800-627-3529 (Minnesota Relay). You may also send an e-mail to ADRequest.dot@state.mn.us. (Please request at least one week in advance.)

NOTE: FOR DETAIL OF COUNTY STATE AID HIGHWAYS AND COUNTY ROADS IN INCORPORATED PLACE, SEE MAPS OF MUNICIPALITIES.