

GENERAL HIGHWAY MAP POPE COUNTY MINNESOTA

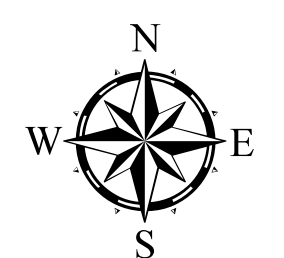
PREPARED BY THE
MINNESOTA DEPARTMENT OF TRANSPORTATION
OFFICE OF TRANSPORTATION SYSTEM MANAGEMENT
IN COOPERATION WITH
U.S. DEPARTMENT OF TRANSPORTATION
FEDERAL HIGHWAY ADMINISTRATION

SCALE



1 in = 2 miles

2023

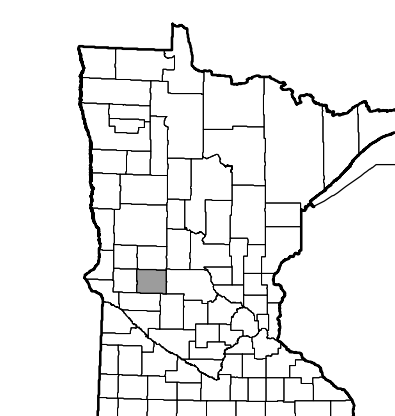


Projection:
Transverse Mercator
NAD 1986
UTM Zone 15

North American Datum
of 1986

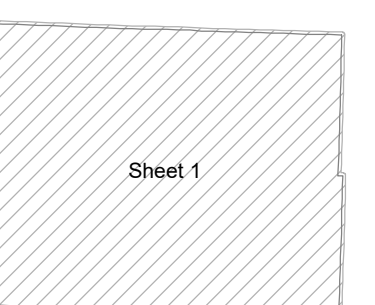
ROAD AND ROADWAY FEATURES	
INTERSTATE	CONCRETE
US HIGHWAY	BITUMINOUS
STATE AID HIGHWAY	GRAVEL
COUNTY ROAD	DIRT/UNIMPROVED
TOWNSHIP ROAD	UNKNOWN
UNORGANIZED TERRITORY ROAD	PROPOSED
PRIVATE ROAD	RAMP OR CONNECTOR
OTHER ROADS	INTERSTATE EXT.
MUNICIPAL	GREAT RIVER ROAD
Military	National
National Park	Monument
National Forest	State Forest
National Wildlife	State Game
RAILROAD AND RAILWAY FEATURES	
EMPIRE BUILDER STATION (Amtrak)	STATE FOREST
NORTHSTAR STATION (Commuter)	STATE GAME
INFRASTRUCTURE FEATURES	
LONG BRIDGE (100' or Greater Span)	AVIATION FEATURES
MAJOR BRIDGE (20' to 100' Span)	GENERAL AIRPORT (Limited Facilities)
MINOR BRIDGE (5' to 20' Span)	ARSTRIP (No Facilities)
DAM	SEAPLANE
LOCK AND DAM	AIRPORT RUNWAY
CITY CENTERS	
STATE CAPITAL	BOUNDARY FEATURES
COUNTY SEAT	TRIBAL LAND
CITY CENTER	STATE OF MINNESOTA
TOWNSHIP COMMUNITY	COUNTY
PUBLIC SERVICE FEATURES	
MINIOT OFFICE	UNORGANIZED TERRITORY
MINIOT TRUCK STATION	FEDERAL ADJUSTED URSAN AREA (2014)
HIGHWAY PATROL DISTRICT OFFICE	CIVIL TOWNSHIP
STATE TRAVEL INFORMATION CENTER	CONGRESSIONAL TOWNSHIP
REST AREA (Full Service)	SECTION
REST AREA (Vault Toilet)	MILITARY
WAYSIDE (Vault or Pit Toilet)	VOYAGEURS NATIONAL PARK
PARK AND RIDE LOT	BOUNDARY WATERS CANOE AREA WILDERNESS
PORT OF ENTRY	STATE PARK
PUBLIC ACCESS POINT	REGIONAL PARK
PUBLIC UNIVERSITY AND COLLEGE	NATIONAL FOREST
PRIVATE UNIVERSITY AND COLLEGE	NATIONAL AND STATE FOREST
FARMLANDS	STATE FOREST
CULTURAL FEATURES	
STATE HISTORICAL MARKER	NATIONAL TRAIL
HISTORIC DISTRICT	WILDLIFE REFUGE AREA
HISTORIC SITE	WILDLIFE MANAGEMENT AREA
MONUMENT	HYDROLOGIC FEATURES
CEMETERY	LAKE, POND OR RESERVOIR
	RIVER OR STREAM (PERMANENT)
	STREAM (INTERMITTENT)
	DRAINAGE DITCH
	WETLAND
	ISLAND OR LAND
	REGIONAL WATERSHED

Outline Map of Minnesota showing location of the County within the state.



Outline Map of the County.

Area of this County 717.12 Sq. Miles
Land Area 669.71 Sq. Miles
2020 Total County Population 11308



LAST EDITED ON 1-02-2024

SHEET 1 OF 1

To request information from this document in an alternative format, call 651-366-4718 or 1-800-657-3774 (Greater Minnesota); 711 or 1-800-627-3529 (Minnesota Relay). You may also send an e-mail to ADRequest.dot@state.mn.us. (Please request at least one week in advance.)

NOTE: FOR DETAIL OF COUNTY STATE AID HIGHWAYS AND COUNTY ROADS IN INCORPORATED PLACE, SEE MAPS OF MUNICIPALITIES.