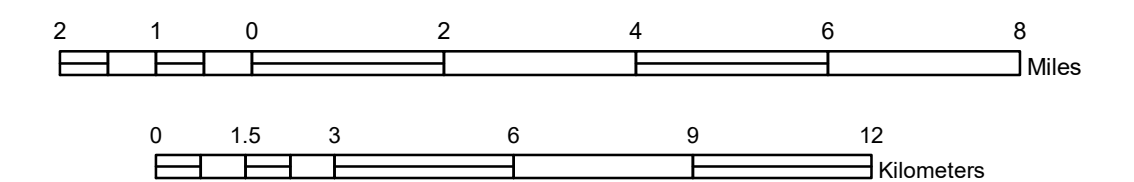


GENERAL HIGHWAY MAP SAINT LOUIS COUNTY MINNESOTA

PREPARED BY THE
MINNESOTA DEPARTMENT OF TRANSPORTATION
OFFICE OF TRANSPORTATION SYSTEM MANAGEMENT
IN COOPERATION WITH
U.S. DEPARTMENT OF TRANSPORTATION
FEDERAL HIGHWAY ADMINISTRATION

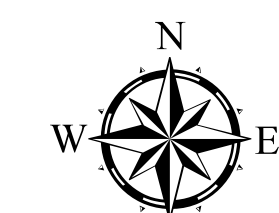
SCALE



1 in = 2 miles

2022

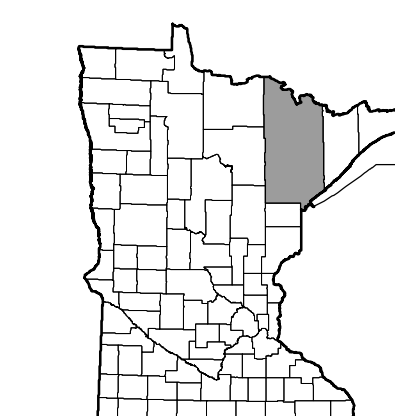
Projection:
Transverse Mercator
NAD 1986
UTM Zone 15



North American Datum
of 1986

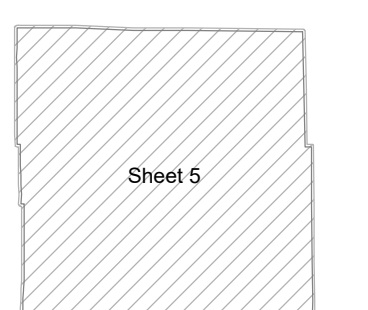
ROAD AND ROADWAY FEATURES	
INTERSTATE	CONCRETE
US HIGHWAY	BITUMINOUS
STATE AID HIGHWAY	GRAVEL
COUNTY ROAD	DIRT/UNIMPROVED
TOWNSHIP ROAD	UNKNOWN
UNORGANIZED TERRITORY ROAD	PROPOSED
PRIVATE ROAD	RAMP OR CONNECTOR
OTHER ROADS	INTERSTATE EXT.
MUNICIPAL	GREAT RIVER ROAD
Military	National Forest
National Park	State Park
National Wildlife	State Game
RAILROAD AND RAILWAY FEATURES	
EMPIRE BUILDER STATION (AMTRAK)	AVIATION FEATURES
NORTHSTAR STATION (COMMUTER)	GENERAL AIRPORT (Limited Facilities)
INFRASTRUCTURE FEATURES	
LONG BRIDGE (100' or Greater Span)	ARSTRIP (No Facilities)
MAJOR BRIDGE (20' to 100' Span)	SEAPLANE
MINOR BRIDGE (5' to 20' Span)	AIRPORT RUNWAY
DAM	LOCK AND DAM
STATE CAPITAL	CITY CENTER
COUNTY BEAT	CITY CENTER
CITY CENTER	TOWNSHIP COMMUNITY
PUBLIC SERVICE FEATURES	MINOT OFFICE
MINOT TRUCK STATION	HIGHWAY PATROL DISTRICT OFFICE
STATE TRAVEL INFORMATION CENTER	REST AREA (Full Service)
REST AREA (Vault Toilet)	WAYSIDE (Vault or Pit Toilet)
PARK AND RIDE LOT	POINT OF ENTRY
PUBLIC ACCESS POINT	PUBLIC UNIVERSITY AND COLLEGE
PRIVATE UNIVERSITY AND COLLEGE	FARMLANDS
CULTURAL FEATURES	STATE HISTORICAL MARKER
HISTORIC DISTRICT	HISTORIC SITE
MONUMENT	CEMETERY
BOUNDARY FEATURES	
TRIBAL LAND	STATE OF MINNESOTA
COUNTY	MUNICIPALITY
UNORGANIZED TERRITORY	FEDERAL ADJUSTED URSAN AREA (2014)
CIVIL TOWNSHIP	CONGRESSIONAL TOWNSHIP
SECTION	MILITARY
VOYAGEUR NATIONAL PARK	BOUNDARY WATERS CANOE AREA WILDERNESS
STATE PARK	NATIONAL FOREST
NATIONAL FOREST	NATIONAL AND STATE FOREST
STATE FOREST	NATIONAL TRAIL
WILDLIFE REFUGUE AREA	WILDLIFE MANAGEMENT AREA
HYDROLOGIC FEATURES	
LAKE, POND OR RESERVOIR	RIVER OR STREAM (PERMANENT)
STREAM (INTERMITTENT)	DRAINAGE DITCH
WETLAND	ISLAND OR LAND
REGIONAL WATERSHED	

Outline Map of Minnesota showing location of the County within the state.



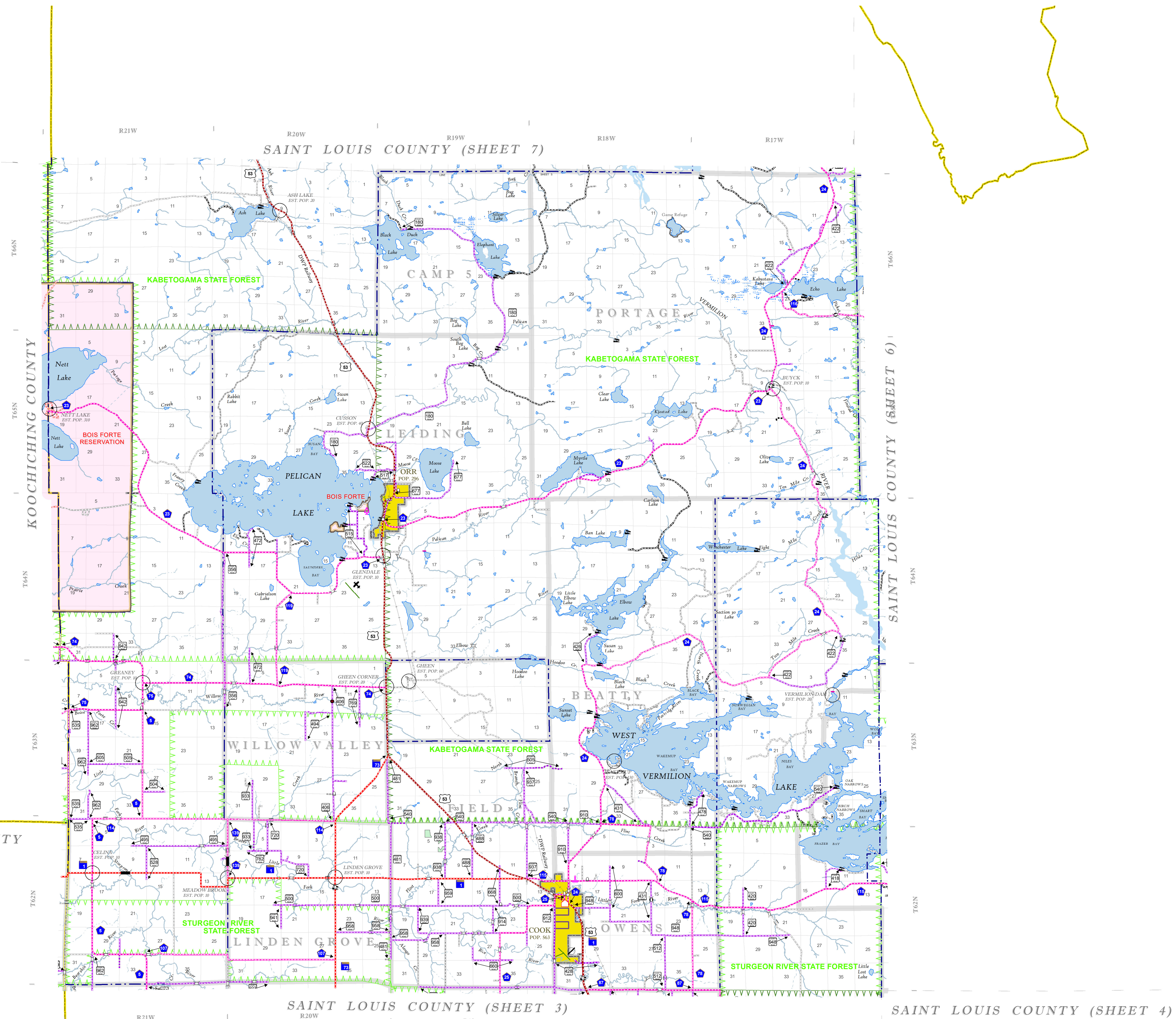
Outline Map of the County.

Area of this County 6,737.86 Sq. Miles
Land Area 6,247.4 Sq. Miles
2020 Total County Population 200231



LAST EDITED ON 1-07-2023

SHEET 5 OF 7



To request information from this document in an alternative format, call 651-366-4718 or 1-800-657-3774 (Greater Minnesota); 711 or 1-800-627-3529 (Minnesota Relay). You may also send an e-mail to ADRequest.dot@state.mn.us. (Please request at least one week in advance.)

NOTE: FOR DETAIL OF COUNTY STATE AID HIGHWAYS AND COUNTY ROADS IN INCORPORATED PLACE, SEE MAPS OF MUNICIPALITIES.