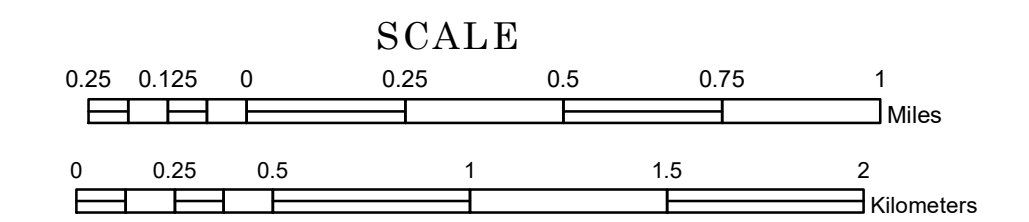


TOWNSHIP OF CORMORANT

PREPARED BY THE
MINNESOTA DEPARTMENT OF TRANSPORTATION
OFFICE OF TRANSPORTATION SYSTEM MANAGEMENT

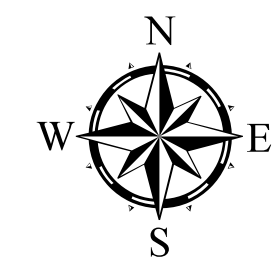
IN COOPERATION WITH
U.S. DEPARTMENT OF TRANSPORTATION
FEDERAL HIGHWAY ADMINISTRATION



1 in = 1,600 ft

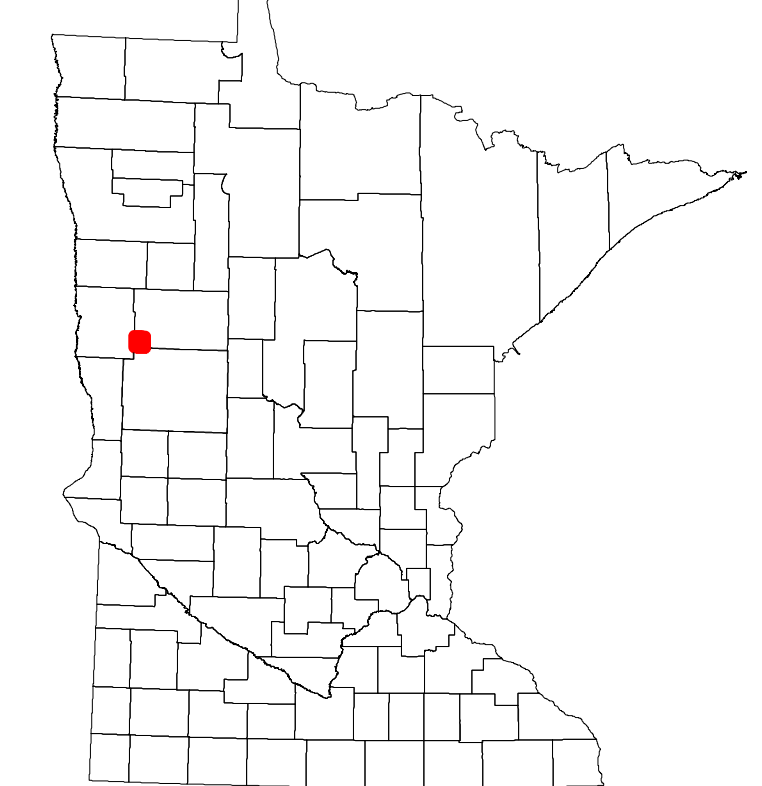
2024

Projection:
Transverse Mercator
NAD 1986
UTM Zone 15

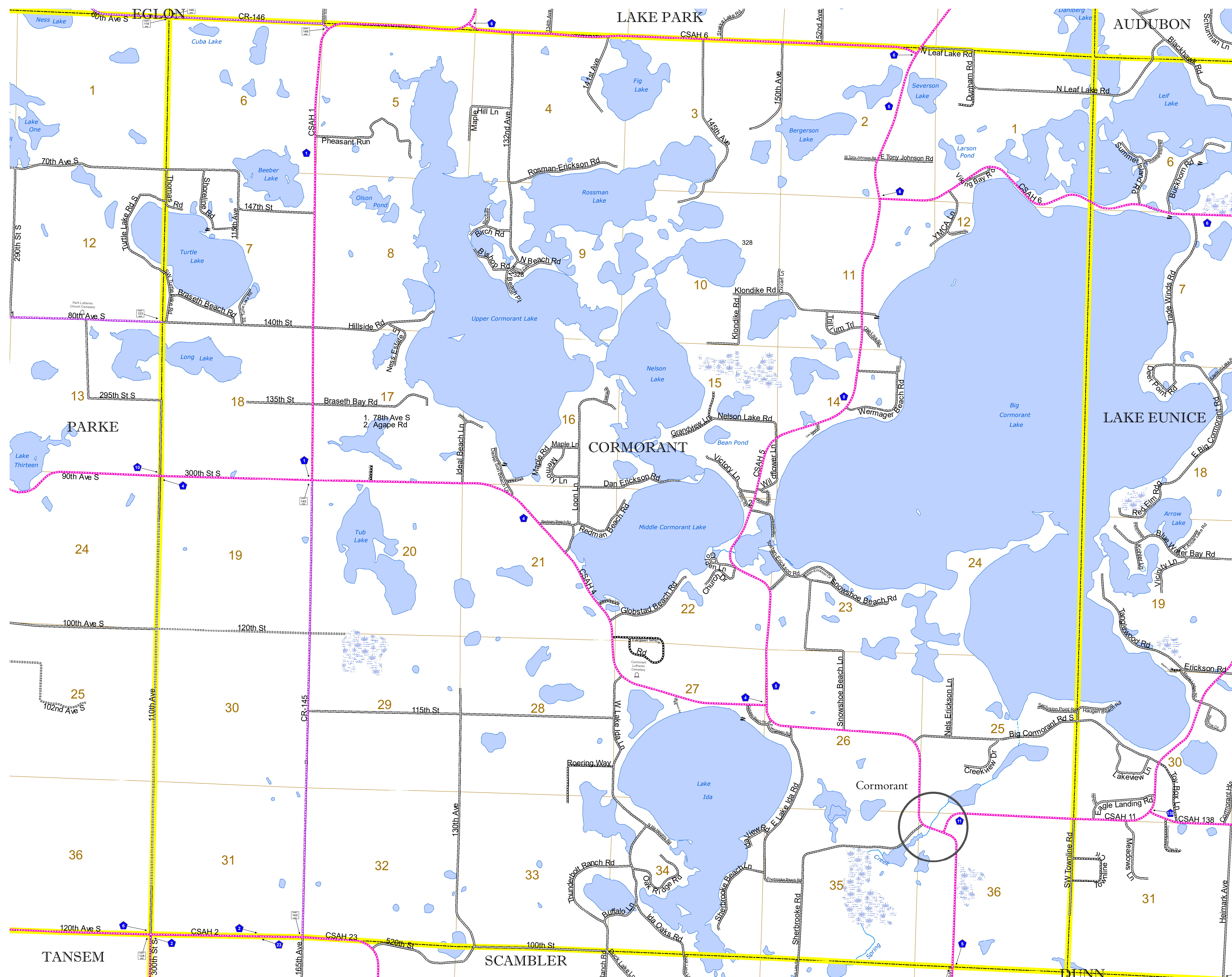


North American Datum
of 1986

ROAD AND ROADWAY FEATURES		RAILROAD AND RAILWAY FEATURES		AVIATION FEATURES		BOUNDARY FEATURES	
INTERSTATE	[Symbol]	CONCRETE	[Symbol]	COMMERCIAL AIRPORT	[Symbol]	TRIBAL LAND	[Symbol]
US HIGHWAY	[Symbol]	BITUMINOUS	[Symbol]	GENERAL AIRPORT	[Symbol]	STATE OF MINNESOTA	[Symbol]
MN HIGHWAY	[Symbol]	GRAVEL	[Symbol]	AIRSTRIP	[Symbol]	COUNTY	[Symbol]
COUNTY STATE AID HIGHWAY	[Symbol]	DIRT/UNIMPROVED	[Symbol]	SEAPLANE	[Symbol]	MUNICIPALITY	[Symbol]
COUNTY ROAD	[Symbol]	OTHER	[Symbol]	AIRPORT RUNWAY	[Symbol]	UNORGANIZED TERRITORY	[Symbol]
TOWNSHIP ROAD	[Symbol]	UNKNOWN	[Symbol]			FEDERAL ADJUSTED URBAN AREA (2014)	[Symbol]
UNORGANIZED TERRITORY ROAD	[Symbol]					CIVIL TOWNSHIP	[Symbol]
OTHER ROADS						CONGRESSIONAL TOWNSHIP	[Symbol]
Municipal	[Symbol]					SECTION	[Symbol]
Private	[Symbol]					MILITARY	[Symbol]
National Monument	[Symbol]					VOYAGEURS NATIONAL PARK	[Symbol]
State Forest	[Symbol]					BOUNDARY WATERS CANOE AREA WILDERNESS	[Symbol]
Nature Service	[Symbol]					STATE PARK	[Symbol]
National Park	[Symbol]					REGIONAL PARK	[Symbol]
National Wildlife	[Symbol]					NATIONAL FOREST	[Symbol]
State Park	[Symbol]					NATIONAL AND STATE FOREST	[Symbol]
Preserve	[Symbol]					STATE FOREST	[Symbol]
						NATIONAL TRAIL	[Symbol]
						WILDLIFE REFUGUE AREA	[Symbol]
						WILDLIFE MANAGEMENT AREA	[Symbol]
						HYDROLOGIC FEATURES	
						RIVER OR STREAM (PERMANENT)	[Symbol]
						LAKE, POND OR RESERVOIR	[Symbol]
						STREAM (INTERMITTENT)	[Symbol]
						DRAINAGE DITCH	[Symbol]
						WETLAND	[Symbol]
						ISLAND OR LAND	[Symbol]
						REGIONAL WATERSHED	[Symbol]



Population (U.S. Census 2010): 1039



To request information from this document in an alternative format, call 651-366-4718 or 1-800-657-3774 (Greater Minnesota); 711 or 1-800-627-3529 (Minnesota Relay). You may also send an e-mail to ADarequest.dot@state.mn.us. (Please request at least one week in advance.)