

TOWNSHIP OF COTTONWOOD

PREPARED BY THE
MINNESOTA DEPARTMENT OF TRANSPORTATION
OFFICE OF TRANSPORTATION SYSTEM MANAGEMENT

IN COOPERATION WITH
U.S. DEPARTMENT OF TRANSPORTATION
FEDERAL HIGHWAY ADMINISTRATION



1 in = 2,000 ft

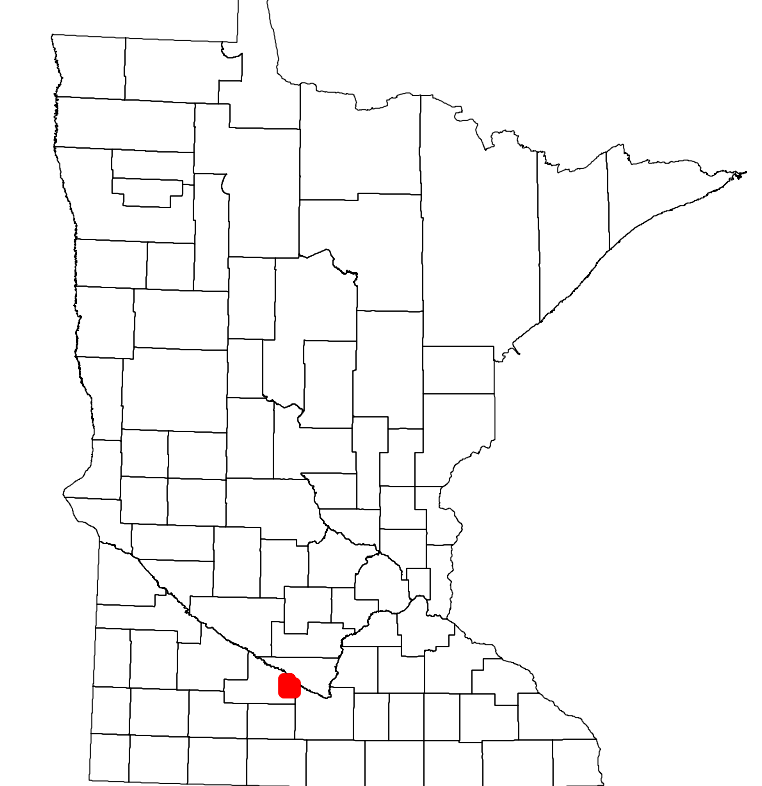
2023

Projection:
Transverse Mercator
NAD 1986
UTM Zone 15

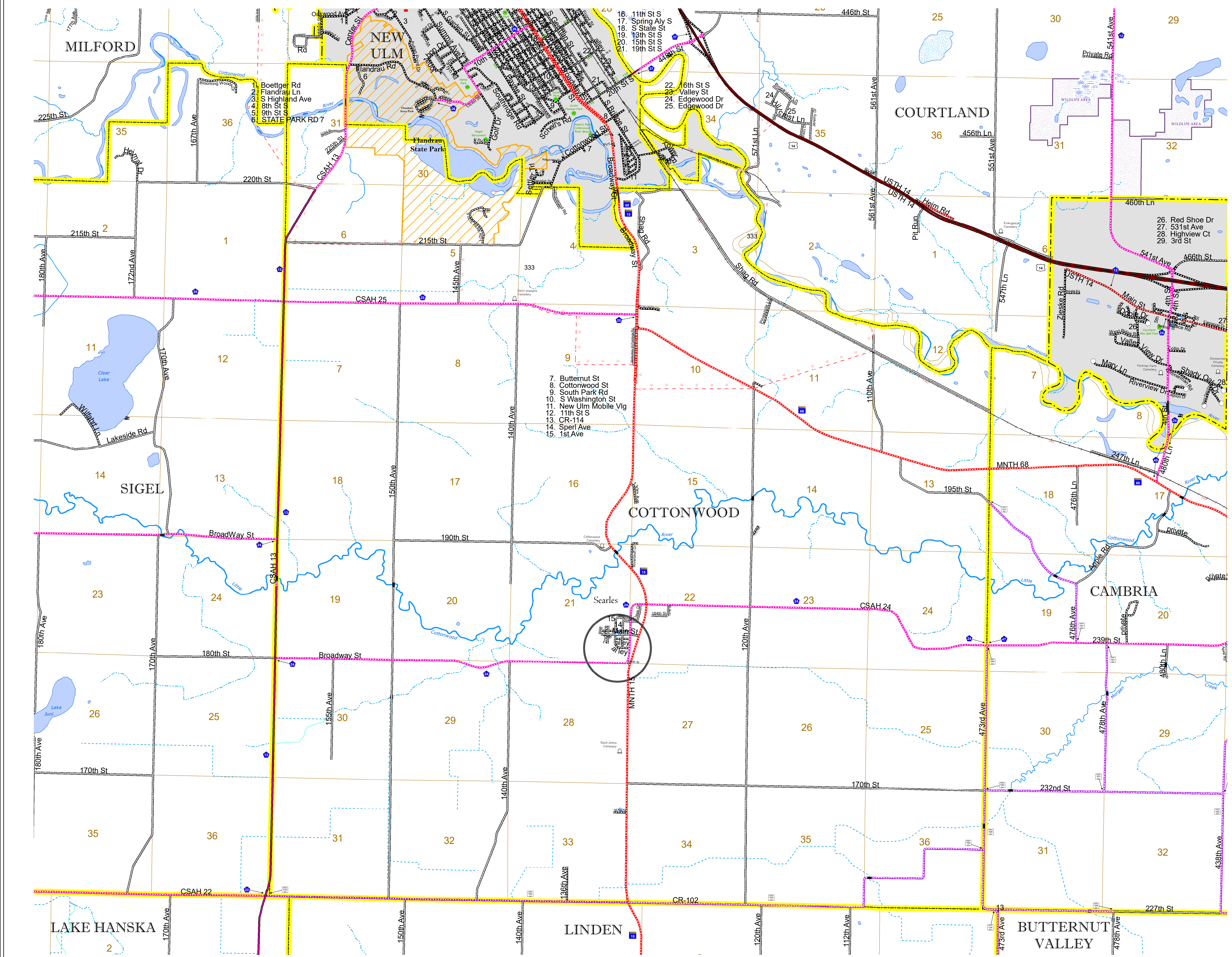


North American Datum
of 1986

ROAD AND ROADWAY FEATURES	RAILROAD AND RAILWAY FEATURES	AVIATION FEATURES	BOUNDARY FEATURES
INTERSTATE	EMPIRE BUILDER STATION (AMTRAK)	COMMERCIAL AIRPORT	TRIBAL LAND
US HIGHWAY	NORTHSTAR STATION (COMPUTER)	GENERAL AIRPORT	STATE OF MINNESOTA
MN HIGHWAY	LIGHT RAIL	AIRSTRIP	COUNTY
COUNTY STATE AID HIGHWAY	BLUE LINE	SEAPLANE	MUNICIPALITY
COUNTY ROAD	GREEN LINE	AIRPORT RUNWAY	UNORGANIZED TERRITORY
TOWNSHIP ROAD	LONG BRIDGE (200' OR GREATER SPAN)	RAILROAD	FEDERAL ADJUSTED URBAN AREA (2014)
UNORGANIZED TERRITORY ROAD	MAJOR BRIDGE (20' TO 200' SPAN)	MINOR BRIDGE (5' TO 20' SPAN)	CIVIL TOWNSHIP
OTHER ROADS	MINOR BRIDGE (5' TO 20' SPAN)	LOCK AND DAM	CONGRESSIONAL TOWNSHIP
Municipal	LOCK AND DAM	CITY CENTERS	SECTION
Private	STATE CAPITAL	STATE SEAT	MILITARY
National Monument	COUNTY SEAT	CITY CENTER	VOYAGEURS NATIONAL PARK
State Forest	CITY CENTER	UNINCORPORATED COMMUNITY	BOUNDARY WATERS CANOE AREA WILDERNESS
National Wildlife Refuge	PUBLIC SERVICE FEATURES	MNDOT OFFICE	STATE PARK
State Game Preserve	MNDOT OFFICE	MNDOT TRUCK STATION	REGIONAL PARK
	HIGHWAY PATROL DISTRICT OFFICE	STATE TRAVEL INFORMATION CENTER	NATIONAL FOREST
	REST AREA (FULL SERVICE)	REST AREA (VAULT TOILET)	NATIONAL AND STATE FOREST
	WAYSIDE (VAULT OR PIT TOILET)	PARK AND RIDE LOT	STATE FOREST
	PORT OF ENTRY	PUBLIC ACCESS POINT	NATIONAL TRAIL
	MIN STATE COLLEGE AND UNIVERSITY SYSTEM (MNSCU)	UNIVERSITY OF MN SYSTEM	WILDLIFE REFUGUE AREA
	FAIRGROUNDS	CULTURAL FEATURES	WILDLIFE MANAGEMENT AREA
	STATE HISTORICAL MARKER	HISTORIC DISTRICT	HYDROLOGIC FEATURES
	HISTORIC SITE	MONUMENT	RIVER OR STREAM (PERMANENT)
			LAKE, POND OR RESERVOIR
			STREAM (INTERMITTENT)
			DRAINAGE DITCH
			WETLAND
			ISLAND OR LAND
			REGIONAL WATERSHED



Population (U.S. Census 2010): 840



To request information from this document in an alternative format, call 651-366-4718 or 1-800-657-3774 (Greater Minnesota); 711 or 1-800-627-3529 (Minnesota Relay). You may also send an e-mail to ADRequest.dot@state.mn.us. (Please request at least one week in advance.)