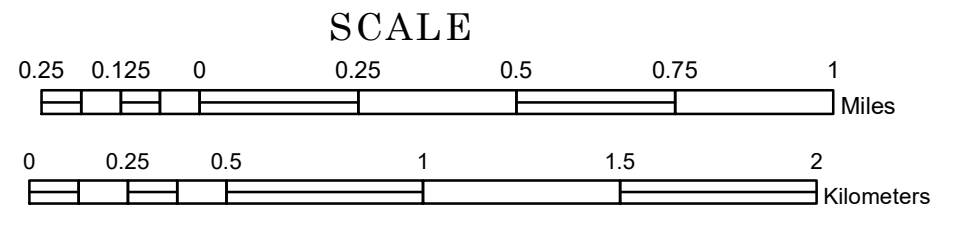


TOWNSHIP OF TORREY

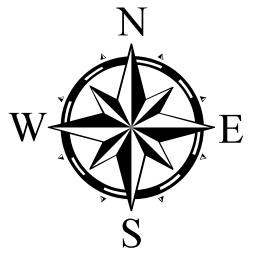
PREPARED BY THE
MINNESOTA DEPARTMENT OF TRANSPORTATION
OFFICE OF TRANSPORTATION SYSTEM MANAGEMENT

IN COOPERATION WITH
U.S. DEPARTMENT OF TRANSPORTATION
FEDERAL HIGHWAY ADMINISTRATION

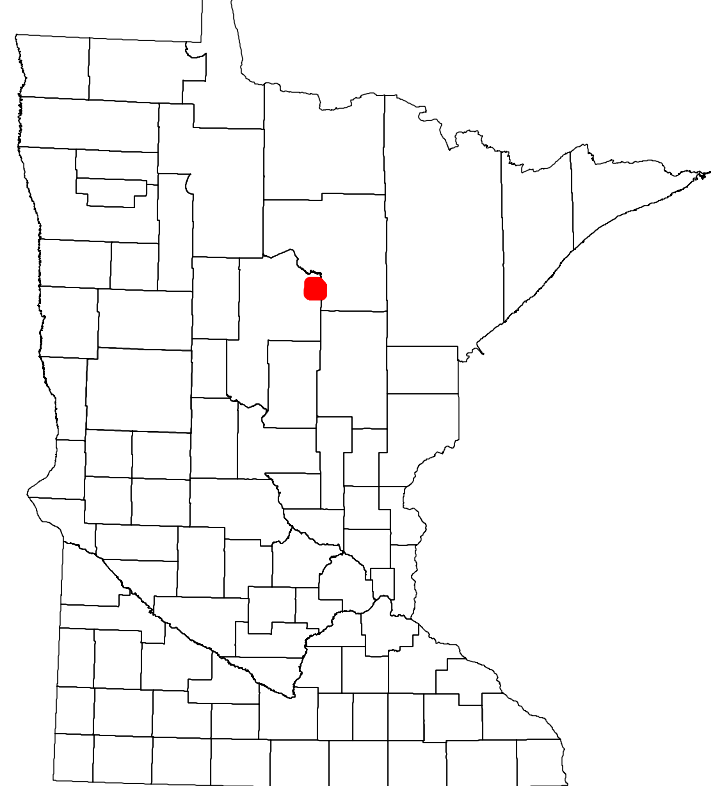


2024

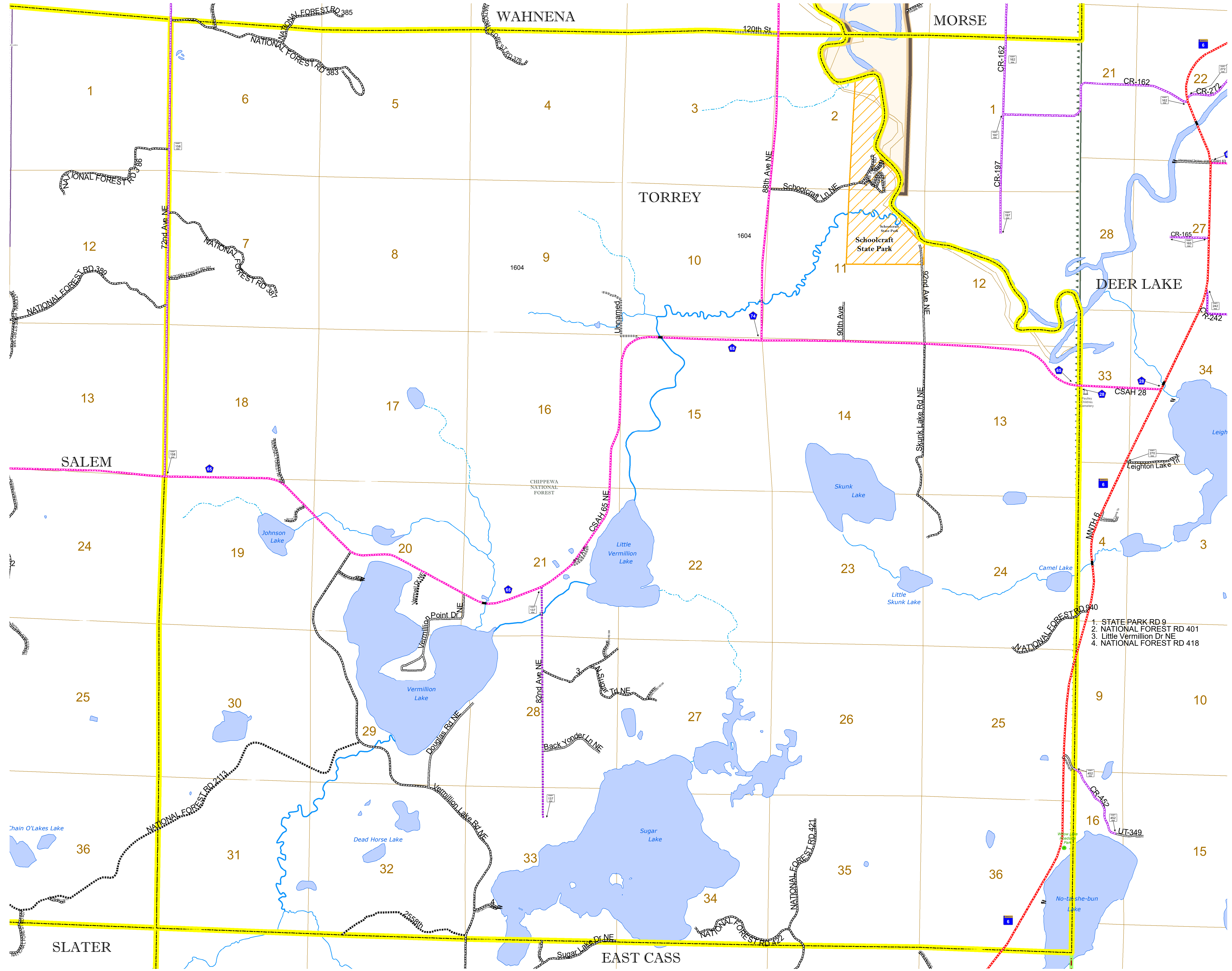
Projection:
Transverse Mercator
NAD 1986
UTM Zone 15



ROAD AND ROADWAY FEATURES		BOUNDARY FEATURES	
INTERSTATE		TRIBAL LAND	
US HIGHWAY		STATE OF MINNESOTA	
MN HIGHWAY		COUNTY	
COUNTY STATE AID HIGHWAY		MUNICIPALITY	
COUNTY ROAD		UNINCORPORATED TERRITORY	
TOWNSHIP ROAD		FEDERAL ADJUSTED URBAN AREA (2014)	
UNORGANIZED TERRITORY ROAD		CIVIL TOWNSHIP	
OTHER ROADS		CONGRESSIONAL TOWNSHIP	
Municipal		SECTION	
Private		MILITARY	
National Monument		VOYAGEURS NATIONAL PARK	
National Wildlife		BOUNDARY WATERS CANOE AREA WILDERNESS	
State Park		STATE PARK	
Preserve		REGIONAL PARK	
RAILROAD AND RAILWAY FEATURES		NATIONAL FOREST	
EMPIRE BUILDER STATION (AMTRAK)		NATIONAL AND STATE FOREST	
NORTHSTAR STATION (COMMUTER)		STATE FOREST	
LIGHT RAIL		NATIONAL TRAIL	
BLUE LINE		WILDLIFE REFUGUE AREA	
GREEN LINE		WILDLIFE MANAGEMENT AREA	
INFRASTRUCTURE FEATURES		HYDROLOGIC FEATURES	
LONG BRIDGE (200' OR GREATER SPAN)		RIVER OR STREAM (PERMANENT)	
MAJOR BRIDGE (20' TO 200' SPAN)		LAKE, POND OR RESERVOIR	
MINOR BRIDGE (5' TO 20' SPAN)		STREAM (INTERMITTENT)	
DAM		DRAINAGE DITCH	
LOCK AND DAM		WETLAND	
CITY CENTERS		ISLAND OR LAND MONUMENT	
STATE CAPITAL		REGIONAL WATERSHED	
COUNTY SEAT			
CITY CENTER			
UNINCORPORATED COMMUNITY			
PUBLIC SERVICE FEATURES			
MNDOT OFFICE			
HIGHWAY PATROL DISTRICT OFFICE			
STATE TRAVEL INFORMATION CENTER			
REST AREA (Full Service)			
REST AREA (Vault Toilets)			
WAYSIDE (Vault or Pit Toilets)			
PARK AND RIDE LOT			
PORT OF ENTRY			
PUBLIC ACCESS POINT			
MN STATE COLLEGE AND UNIVERSITY SYSTEM (MNSCU)			
UNIVERSITY OF MN SYSTEM			
FAIRGROUNDS			
CULTURAL FEATURES			
STATE HISTORICAL MARKER			
HISTORIC DISTRICT			
HISTORIC SITE			
MONUMENT			



Population (U.S. Census 2010): 155



To request information from this document in an alternative format, call 651-366-4718 or 1-800-657-3774 (Greater Minnesota); 711 or 1-800-627-3529 (Minnesota Relay). You may also send an e-mail to ADAREquest.dot@state.mn.us. (Please request at least one week in advance.)