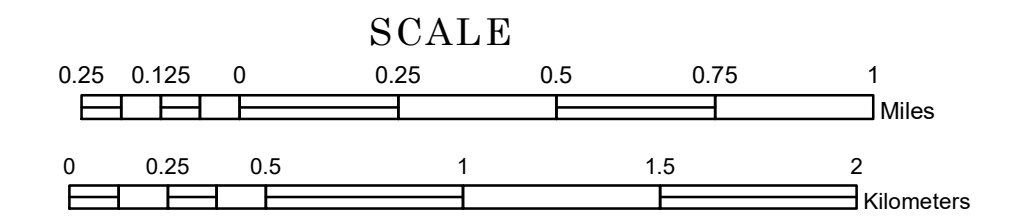


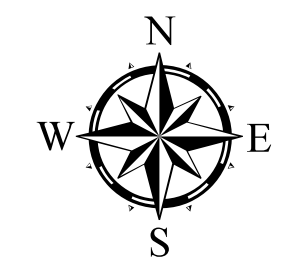
# TOWNSHIP OF BRANDON

PREPARED BY THE  
MINNESOTA DEPARTMENT OF TRANSPORTATION  
OFFICE OF TRANSPORTATION SYSTEM MANAGEMENT

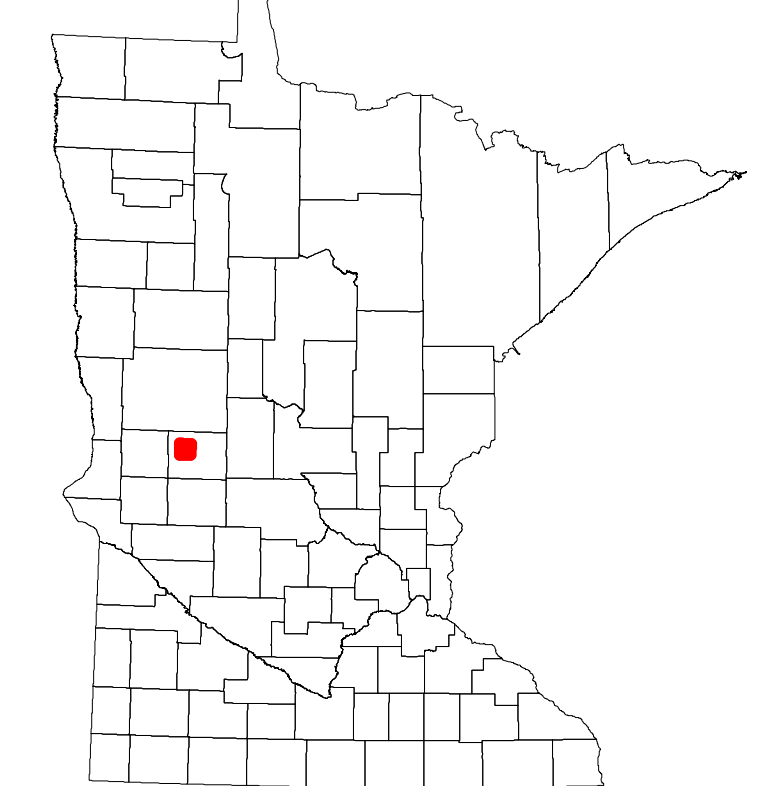
IN COOPERATION WITH  
U.S. DEPARTMENT OF TRANSPORTATION  
FEDERAL HIGHWAY ADMINISTRATION



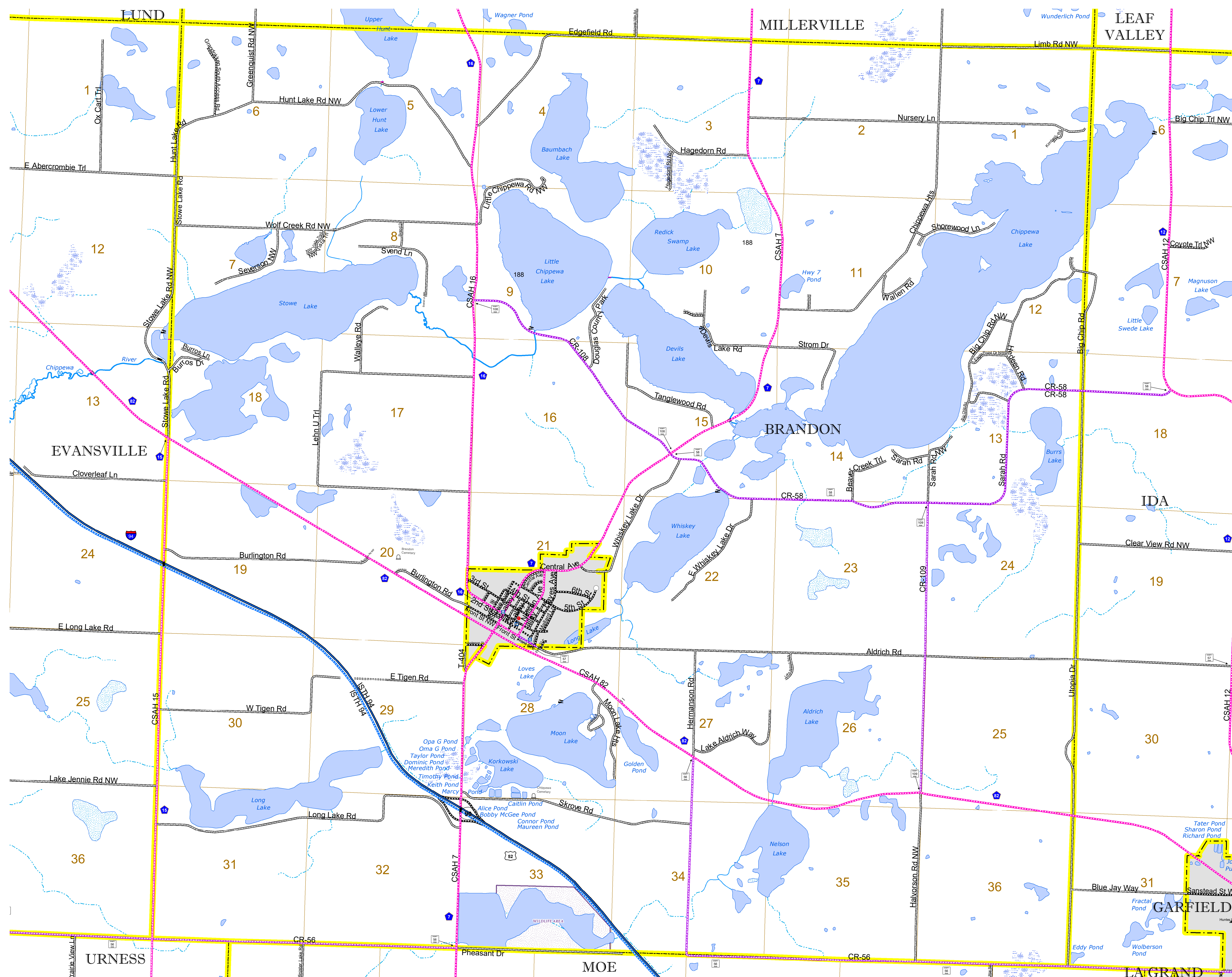
1 in = 1,600 ft  
**2023**



ROAD AND ROADWAY FEATURES	AVIATION FEATURES	BOUNDARY FEATURES
INTERSTATE	COMMERCIAL AIRPORT	TRIBAL LAND
US HIGHWAY	GENERAL AIRPORT	STATE OF MINNESOTA
MN HIGHWAY	AIRSTRIP	COUNTY
COUNTY STATE AID HIGHWAY	SEAPLANE	MUNICIPALITY
COUNTY ROAD	AIRPORT RUNWAY	UNORGANIZED TERRITORY
TOWNSHIP ROAD		FEDERAL ADJUSTED URBAN AREA (2014)
UNORGANIZED TERRITORY ROAD		CIVIL TOWNSHIP
OTHER ROADS		CONGRESSIONAL TOWNSHIP
Municipal		SECTION
Private		MILITARY
National Monument		VOYAGEURS NATIONAL PARK
Nature Service		BOUNDARY WATERS CANOE AREA WILDERNESS
National Forest		STATE PARK
State Park		REGIONAL PARK
Preserve		NATIONAL FOREST
		NATIONAL AND STATE FOREST
		STATE FOREST
		NATIONAL TRAIL
		WILDLIFE REFUGE AREA
		WILDLIFE MANAGEMENT AREA
		HYDROLOGIC FEATURES
		RIVER OR STREAM (PERMANENT)
		LAKE, POND OR RESERVOIR
		STREAM (INTERMITTENT)
		DRAINAGE DITCH
		WETLAND
		ISLAND OR LAND
		REGIONAL WATERSHED



Population (U.S. Census 2010): 713



To request information from this document in an alternative format, call 651-366-4718 or 1-800-657-3774 (Greater Minnesota); 711 or 1-800-627-3529 (Minnesota Relay). You may also send an e-mail to ADRequest.dot@state.mn.us. (Please request at least one week in advance.)