

BENNINGTON

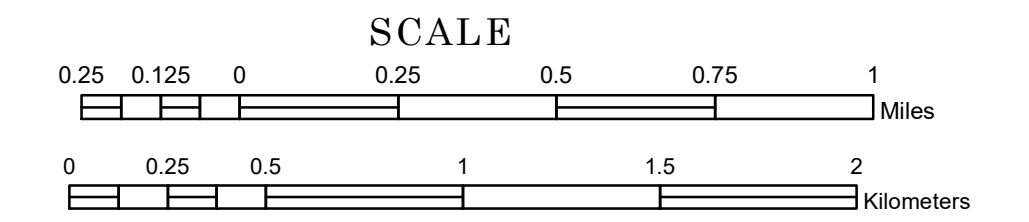
BLOOMFIELD

FORESTVILLE

TOWNSHIP OF BEAVER

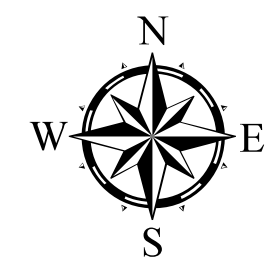
PREPARED BY THE
MINNESOTA DEPARTMENT OF TRANSPORTATION
OFFICE OF TRANSPORTATION SYSTEM MANAGEMENT

IN COOPERATION WITH
U.S. DEPARTMENT OF TRANSPORTATION
FEDERAL HIGHWAY ADMINISTRATION

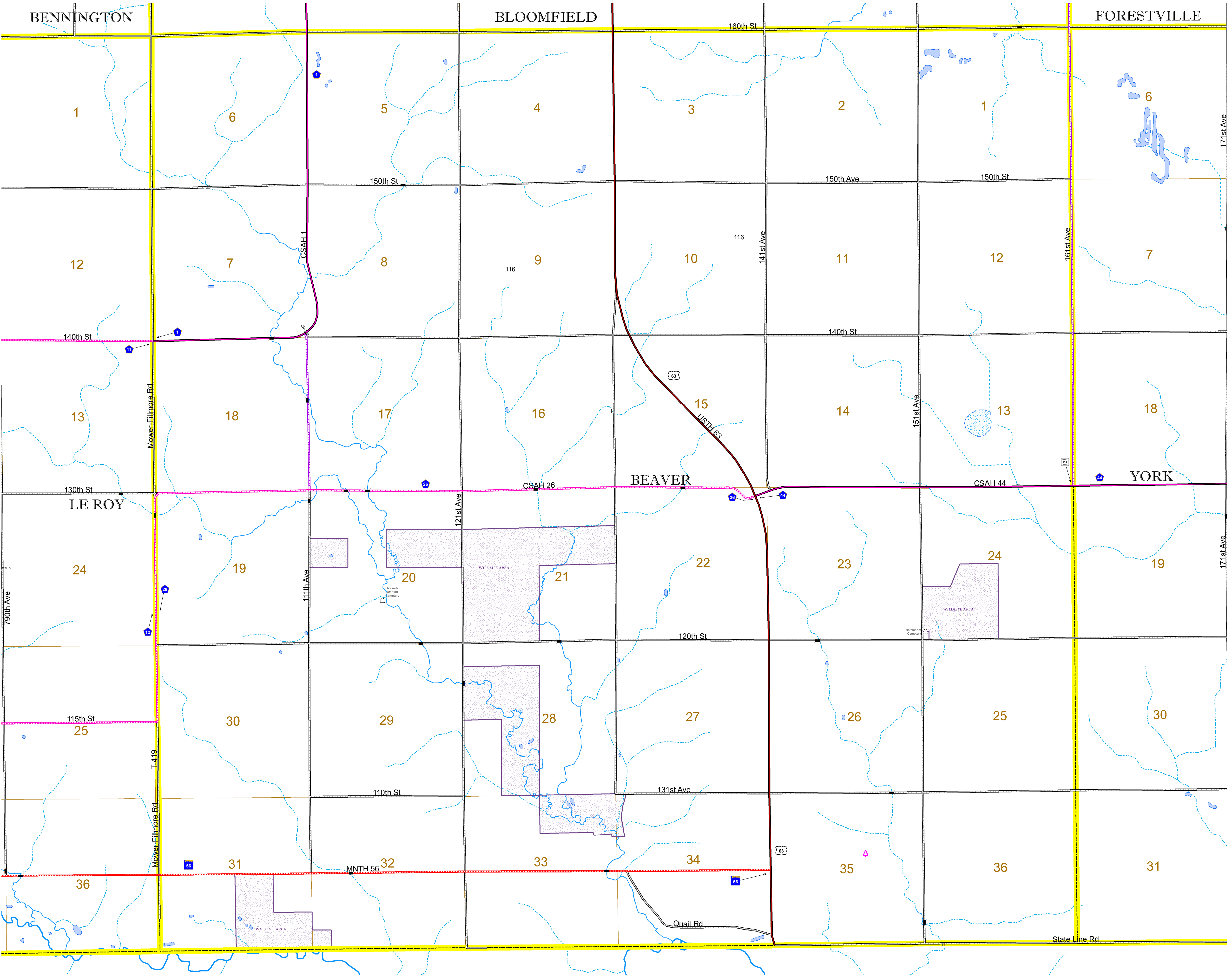


1 in = 1,600 ft
2024

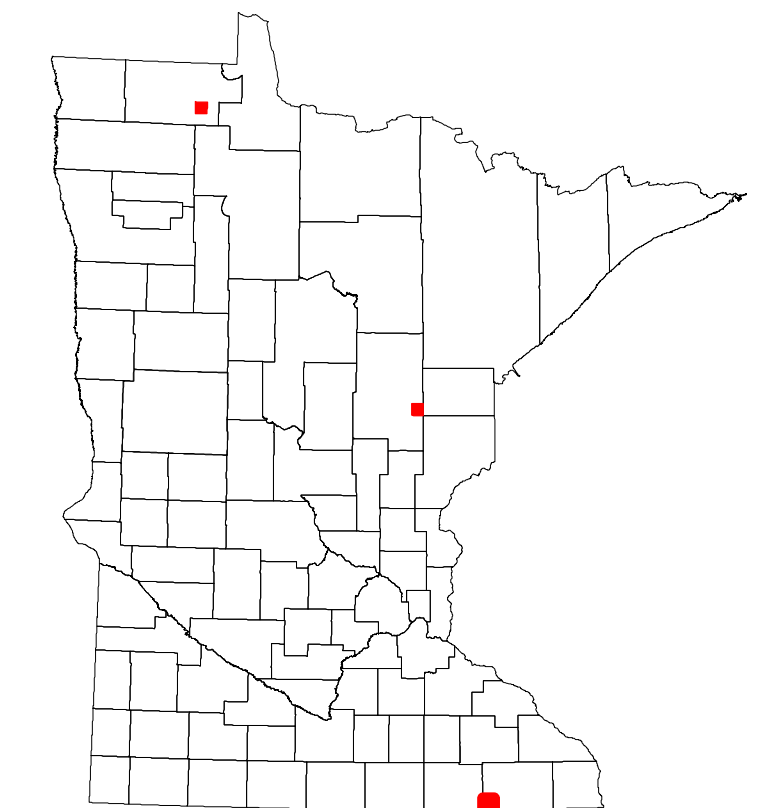
Projection:
Transverse Mercator
NAD 1986
UTM Zone 15



North American Datum
of 1986



ROAD AND ROADWAY FEATURES		AVIATION FEATURES	
INTERSTATE	CONCRETE	COMMERCIAL AIRPORT	GENERAL AIRPORT
US HIGHWAY	BITUMINOUS	AIRSTRIP	AIRSTRIP
MN HIGHWAY	GRAVEL	SEAPLANE	SEAPLANE
COUNTY STATE AID HIGHWAY	DIRT/UNIMPROVED	AIRPORT RUNWAY	AIRPORT RUNWAY
COUNTY ROAD	DIRT/UNIMPROVED		
TOWNSHIP ROAD	OTHER		
UNORGANIZED TERRITORY ROAD	UNKNOWN		
OTHER ROADS	RAMP OR CONNECTOR		
Municipal	INTERSTATE EXIT		
Private	GREAT RIVER ROAD		
National Monument			
National Wildlife			
State Game			
State Park			
Preserve			
RAILROAD AND RAILWAY FEATURES		BOUNDARY FEATURES	
EMPIRE BUILDER STATION (AMTRAK)	TRIBAL LAND	STATE OF MINNESOTA	STATE OF MINNESOTA
NORTHSTAR STATION (COMMUTER)	COUNTY	COUNTY	COUNTY
LIGHT RAIL	MUNICIPALITY	MUNICIPALITY	MUNICIPALITY
BLUE LINE	UNORGANIZED TERRITORY	UNORGANIZED TERRITORY	UNORGANIZED TERRITORY
GREEN LINE	FEDERAL ADJUSTED URBAN AREA (2014)	FEDERAL ADJUSTED URBAN AREA (2014)	FEDERAL ADJUSTED URBAN AREA (2014)
INFRASTRUCTURE FEATURES		CITY CENTERS	
LONG BRIDGE (200' OR GREATER SPAN)	STATE CAPITAL	COUNTY SEAT	CITY CENTER
MAJOR BRIDGE (20' TO 200' SPAN)	UNINCORPORATED COMMUNITY	CITY CENTER	UNINCORPORATED COMMUNITY
MINOR BRIDGE (5' TO 20' SPAN)			
DAM			
LOCK AND DAM			
PUBLIC SERVICE FEATURES		HYDROLOGIC FEATURES	
MNDOT OFFICE	STATE HISTORICAL MARKER	WETLAND	WETLAND
MNDOT TRUCK STATION	HISTORIC DISTRICT	ISLAND OR LAND	ISLAND OR LAND
HIGHWAY PATROL DISTRICT OFFICE	HISTORIC SITE	REGIONAL WATERSHED	REGIONAL WATERSHED
STATE TRAVEL INFORMATION CENTER	MONUMENT		
REST AREA (FULL SERVICE)			
REST AREA (VAULT TOILET)			
WAYSIDE (VAULT OR PITY TOILET)			
PARK AND RIDE LOT			
PORT OF ENTRY			
PUBLIC ACCESS POINT			
MN STATE COLLEGE AND UNIVERSITY SYSTEM (MNSCU)			
UNIVERSITY OF MN SYSTEM			
FAIRGROUNDS			
CULTURAL FEATURES			
STATE HISTORICAL MARKER			
HISTORIC DISTRICT			
HISTORIC SITE			
MONUMENT			



Population (U.S. Census 2010): 242

To request information from this document in an alternative format, call 651-366-4718 or 1-800-657-3774 (Greater Minnesota); 711 or 1-800-627-3529 (Minnesota Relay). You may also send an e-mail to ADAREquest.dot@state.mn.us. (Please request at least one week in advance.)