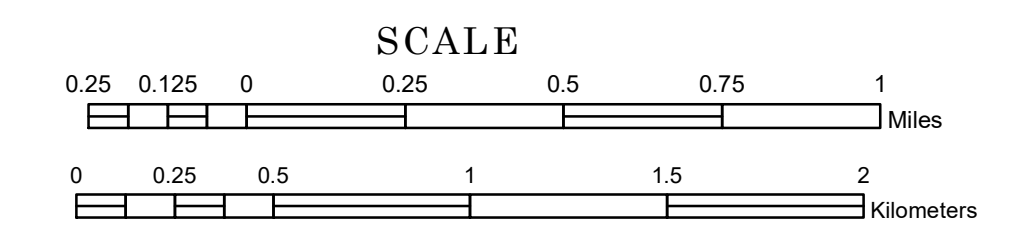


TOWNSHIP OF ELLSBOROUGH

PREPARED BY THE
MINNESOTA DEPARTMENT OF TRANSPORTATION
OFFICE OF TRANSPORTATION SYSTEM MANAGEMENT

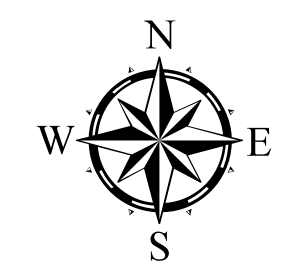
IN COOPERATION WITH
U.S. DEPARTMENT OF TRANSPORTATION
FEDERAL HIGHWAY ADMINISTRATION



1 in = 1,600 ft

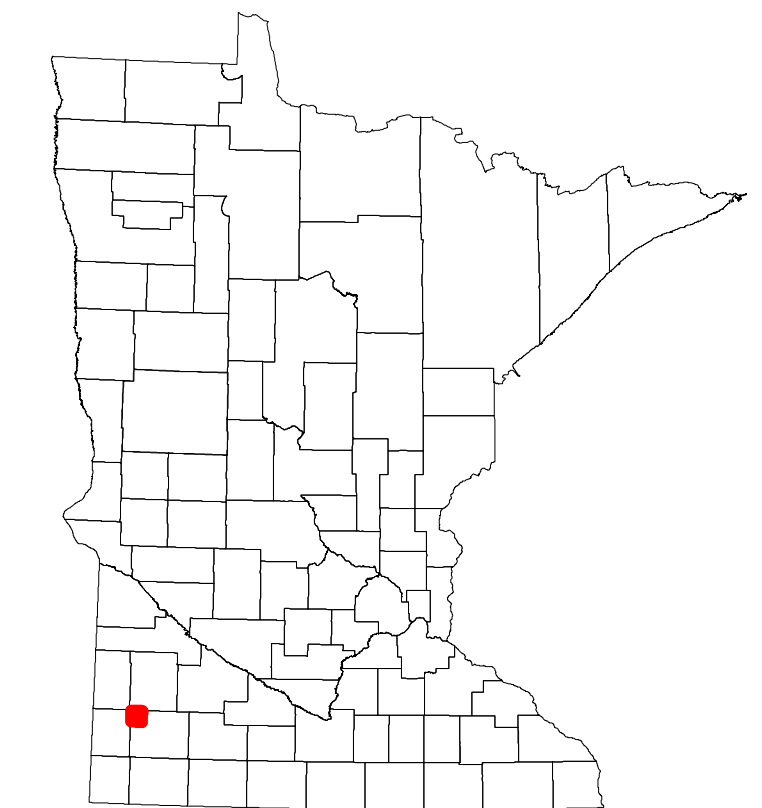
2024

Projection:
Transverse Mercator
NAD 1986
UTM Zone 15

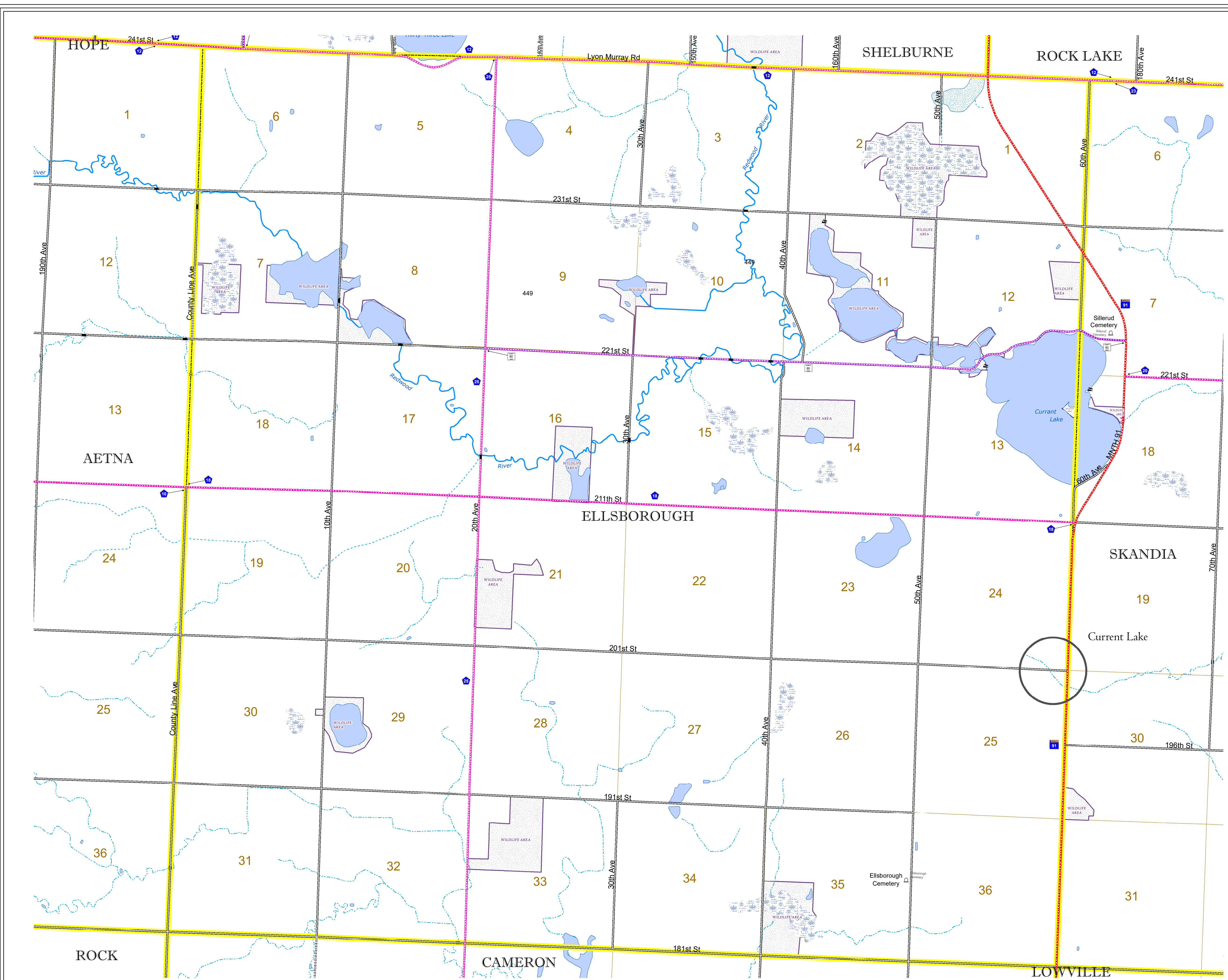


North American Datum
of 1986

ROAD AND ROADWAY FEATURES		AVIATION FEATURES	
INTERSTATE		CONCRETE	
US HIGHWAY		BITUMINOUS	
MN HIGHWAY		GRAVEL	
COUNTY STATE AID HIGHWAY		DIRT/UNIMPROVED	
COUNTY ROAD		OTHER	
TOWNSHIP ROAD		UNKNOWN	
UNORGANIZED TERRITORY ROAD		RAMP OR CONNECTOR	
OTHER ROADS		INTERSTATE EXIT	
Municipal		GREAT RIVER ROAD	
Private		RAILROAD AND RAILWAY FEATURES	
National Monument		EMPIRE BUILDER STATION (AMTRAK)	
National Wildlife		NORTHSTAR STATION (COMPUTER)	
State Park		LIGHT RAIL	
Preserve		BLUE LINE	
RAILROAD AND RAILWAY FEATURES		GREEN LINE	
COMMERCIAL AIRPORT		INFRASTRUCTURE FEATURES	
GENERAL AIRPORT		LONG BRIDGE (200' or Greater Span)	
AIRSTRIP		MAJOR BRIDGE (20' to 200' Span)	
SEAPLANE		MINOR BRIDGE (5' to 20' Span)	
AIRPORT RUNWAY		DAM	
BOUNDARY FEATURES		LOCK AND DAM	
TRIBAL LAND		CITY CENTERS	
STATE OF MINNESOTA		STATE CAPITAL	
COUNTY		COUNTY SEAT	
MUNICIPALITY		CITY CENTER	
UNORGANIZED TERRITORY		UNINCORPORATED COMMUNITY	
FEDERAL ADJUSTED URBAN AREA (2014)		CITY CENTER	
CIVIL TOWNSHIP		CITY CENTER	
CONGRESSIONAL TOWNSHIP		CITY CENTER	
SECTION		CITY CENTER	
MILITARY		CITY CENTER	
VOYAGEURS NATIONAL PARK		CITY CENTER	
BOUNDARY WATERS CANOE AREA WILDERNESS		CITY CENTER	
STATE PARK		CITY CENTER	
REGIONAL PARK		CITY CENTER	
NATIONAL FOREST		CITY CENTER	
NATIONAL AND STATE FOREST		CITY CENTER	
STATE FOREST		CITY CENTER	
NATIONAL TRAIL		CITY CENTER	
WILDLIFE REFUGUE AREA		CITY CENTER	
WILDLIFE MANAGEMENT AREA		CITY CENTER	
HYDROLOGIC FEATURES		CITY CENTER	
RIVER OR STREAM (PERENNIAL)		CITY CENTER	
LAKE, POND OR RESERVOIR		CITY CENTER	
STREAM (INTERMITTENT)		CITY CENTER	
DRAINAGE DITCH		CITY CENTER	
WETLAND		CITY CENTER	
ISLAND OR LAND		CITY CENTER	
REGIONAL WATERSHED		CITY CENTER	



Population (U.S. Census 2010): 145



To request information from this document in an alternative format, call 651-366-4718 or 1-800-657-3774 (Greater Minnesota); 711 or 1-800-627-3529 (Minnesota Relay). You may also send an e-mail to ADRequest.dot@state.mn.us. (Please request at least one week in advance.)