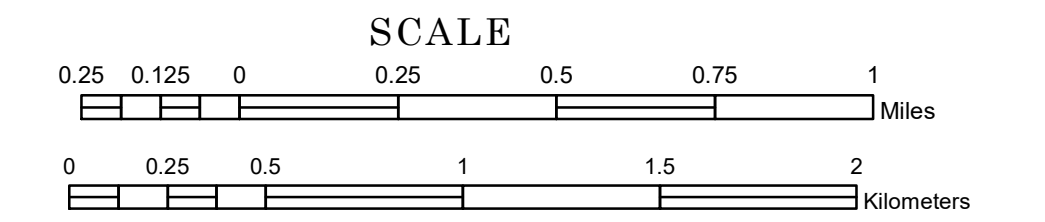


TOWNSHIP OF WESTERN

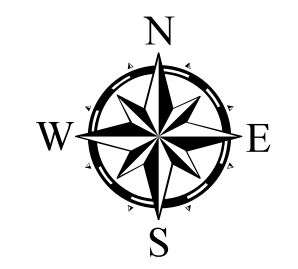
PREPARED BY THE
MINNESOTA DEPARTMENT OF TRANSPORTATION
OFFICE OF TRANSPORTATION SYSTEM MANAGEMENT

IN COOPERATION WITH
U.S. DEPARTMENT OF TRANSPORTATION
FEDERAL HIGHWAY ADMINISTRATION



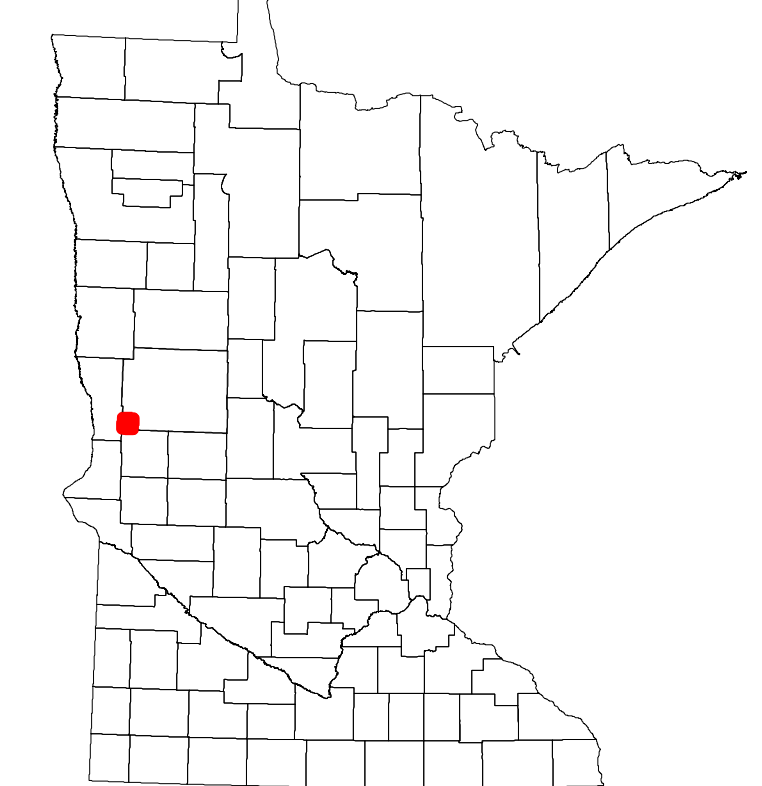
1 in = 1,600 ft
2024

Projection:
Transverse Mercator
NAD 1986
UTM Zone 15

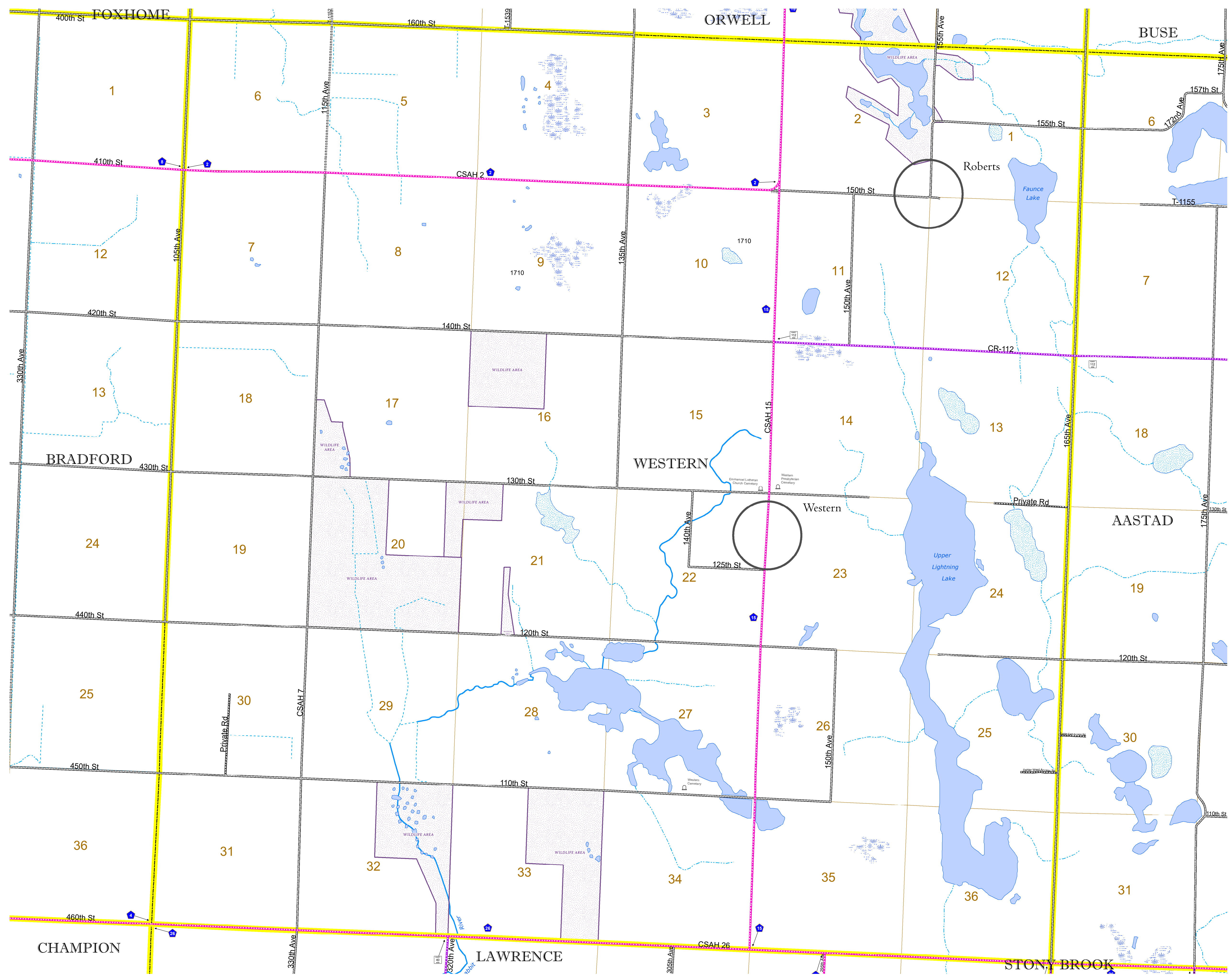


North American Datum
of 1986

ROAD AND ROADWAY FEATURES		AVIATION FEATURES	
INTERSTATE	CONCRETE	COMMERCIAL AIRPORT	GENERAL AIRPORT
US HIGHWAY	BITUMINOUS	AIRSTRIP	AIRSTRIP
MN HIGHWAY	GRAVEL	SEAPLANE	SEAPLANE
COUNTY STATE AID HIGHWAY	DIRT/UNIMPROVED	AIRPORT RUNWAY	AIRPORT RUNWAY
COUNTY ROAD	OTHER	BOUNDARY FEATURES	BOUNDARY FEATURES
TOWNSHIP ROAD	UNKNOWN	TRIBAL LAND	TRIBAL LAND
UNORGANIZED TERRITORY ROAD	UNKNOWN	STATE OF MINNESOTA	STATE OF MINNESOTA
OTHER ROADS	RAMP OR CONNECTOR	COUNTY	COUNTY
Municipal	INTERSTATE EXIT	MUNICIPALITY	MUNICIPALITY
Private	GREAT RIVER ROAD	UNORGANIZED TERRITORY	UNORGANIZED TERRITORY
National Monument	AVIATION FEATURES	FEDERAL ADJUSTED URBAN AREA (2014)	FEDERAL ADJUSTED URBAN AREA (2014)
National Park	GENERAL AIRPORT	CIVIL TOWNSHIP	CIVIL TOWNSHIP
National Wildlife Refuge	AIRSTRIP	CONGRESSIONAL TOWNSHIP	CONGRESSIONAL TOWNSHIP
State Park	SEAPLANE	SECTION	SECTION
Present	AIRPORT RUNWAY	MILITARY	MILITARY
RAILROAD AND RAILWAY FEATURES	BOUNDARY FEATURES	VOYAGEURS NATIONAL PARK	VOYAGEURS NATIONAL PARK
EMPIRE BUILDER STATION (AMTRAK)	STATE OF MINNESOTA	BOUNDARY WATERS CANOE AREA WILDERNESS	BOUNDARY WATERS CANOE AREA WILDERNESS
NORTHSTAR STATION (COMPUTER)	COUNTY	STATE PARK	STATE PARK
LIGHT RAIL	MUNICIPALITY	REGIONAL PARK	REGIONAL PARK
BLUE LINE	UNORGANIZED TERRITORY	NATIONAL FOREST	NATIONAL FOREST
GREEN LINE	FEDERAL ADJUSTED URBAN AREA (2014)	NATIONAL AND STATE FOREST	NATIONAL AND STATE FOREST
INFRASTRUCTURE FEATURES	CIVIL TOWNSHIP	STATE FOREST	STATE FOREST
LONG BRIDGE (200' or Greater Span)	CONGRESSIONAL TOWNSHIP	NATIONAL TRAIL	NATIONAL TRAIL
MAJOR BRIDGE (20' to 200' Span)	SECTION	WILDLIFE REFUGUE AREA	WILDLIFE REFUGUE AREA
MINOR BRIDGE (5' to 20' Span)	MILITARY	WILDLIFE MANAGEMENT AREA	WILDLIFE MANAGEMENT AREA
DAM	VOYAGEURS NATIONAL PARK	HYDROLOGIC FEATURES	HYDROLOGIC FEATURES
LOCK AND DAM	BOUNDARY WATERS CANOE AREA WILDERNESS	RIVER OR STREAM (PERMANENT)	RIVER OR STREAM (PERMANENT)
CITY CENTERS	STATE PARK	LAKE, POND OR RESERVOIR	LAKE, POND OR RESERVOIR
STATE CAPITAL	NATIONAL FOREST	STREAM (INTERMITTENT)	STREAM (INTERMITTENT)
COUNTY SEAT	NATIONAL AND STATE FOREST	DRAINAGE DITCH	DRAINAGE DITCH
CITY CENTER	STATE FOREST	WETLAND	WETLAND
UNINCORPORATED COMMUNITY	NATIONAL TRAIL	ISLAND OR LAND	ISLAND OR LAND
PUBLIC SERVICE FEATURES	WILDLIFE REFUGUE AREA	REGIONAL WATERSHED	REGIONAL WATERSHED
MN DOT OFFICE	WILDLIFE MANAGEMENT AREA		
MN DOT TRUCK STATION	HYDROLOGIC FEATURES		
HIGHWAY PATROL DISTRICT OFFICE	RIVER OR STREAM (PERMANENT)		
STATE TRAVEL INFORMATION CENTER	LAKE, POND OR RESERVOIR		
REST AREA (Full Service)	STREAM (INTERMITTENT)		
REST AREA (Vault Toilet)	DRAINAGE DITCH		
WAYSIDE (Vault or Pit Toilet)	WETLAND		
PARK AND RIDE LOT	ISLAND OR LAND		
PORT OF ENTRY	REGIONAL WATERSHED		
PUBLIC ACCESS POINT			
MN STATE COLLEGE AND UNIVERSITY SYSTEM (MNSCU)			
UNIVERSITY OF MN SYSTEM			
FARMSHOULDS			
CULTURAL FEATURES			
STATE HISTORICAL MARKER			
HISTORIC DISTRICT			
HISTORIC SITE			
MONUMENT			



Population (U.S. Census 2010): 129



To request information from this document in an alternative format, call 651-366-4718 or 1-800-657-3774 (Greater Minnesota); 711 or 1-800-627-3529 (Minnesota Relay). You may also send an e-mail to ADArequest.dot@state.mn.us. (Please request at least one week in advance.)