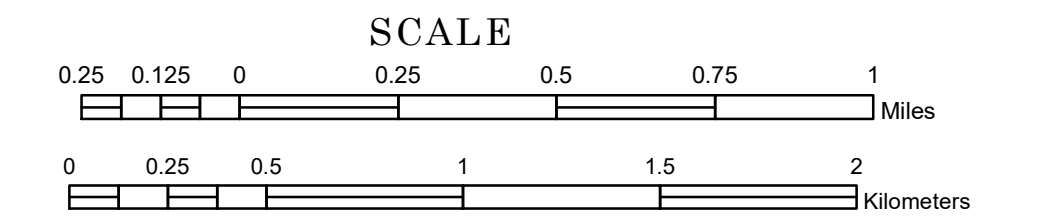


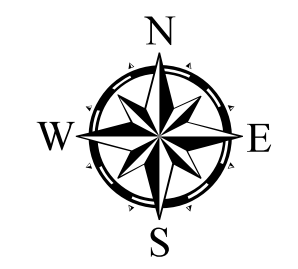
TOWNSHIP OF WOODSIDE

PREPARED BY THE
MINNESOTA DEPARTMENT OF TRANSPORTATION
OFFICE OF TRANSPORTATION SYSTEM MANAGEMENT

IN COOPERATION WITH
U.S. DEPARTMENT OF TRANSPORTATION
FEDERAL HIGHWAY ADMINISTRATION



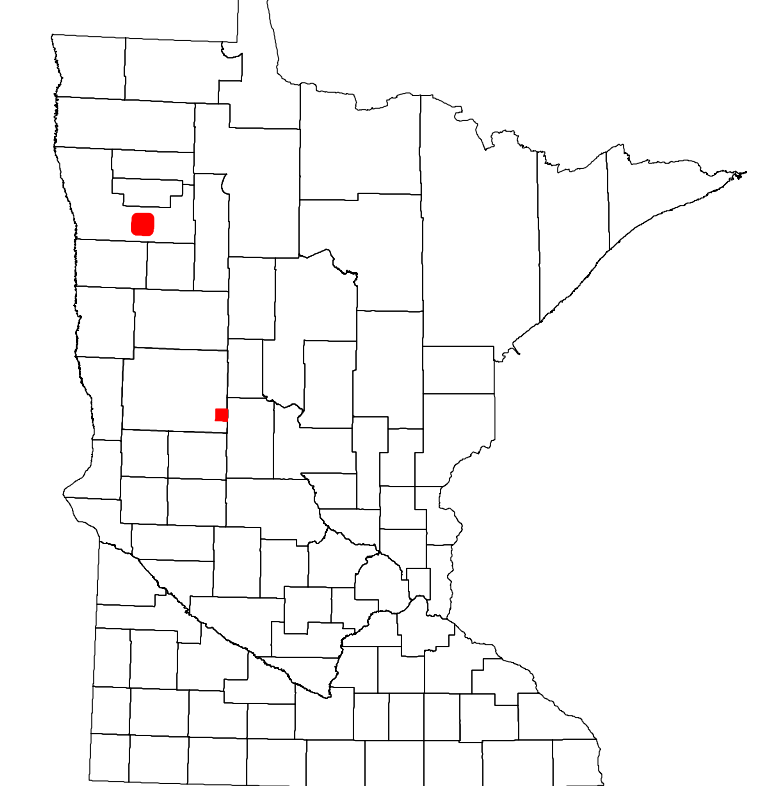
1 in = 1,600 ft
2024



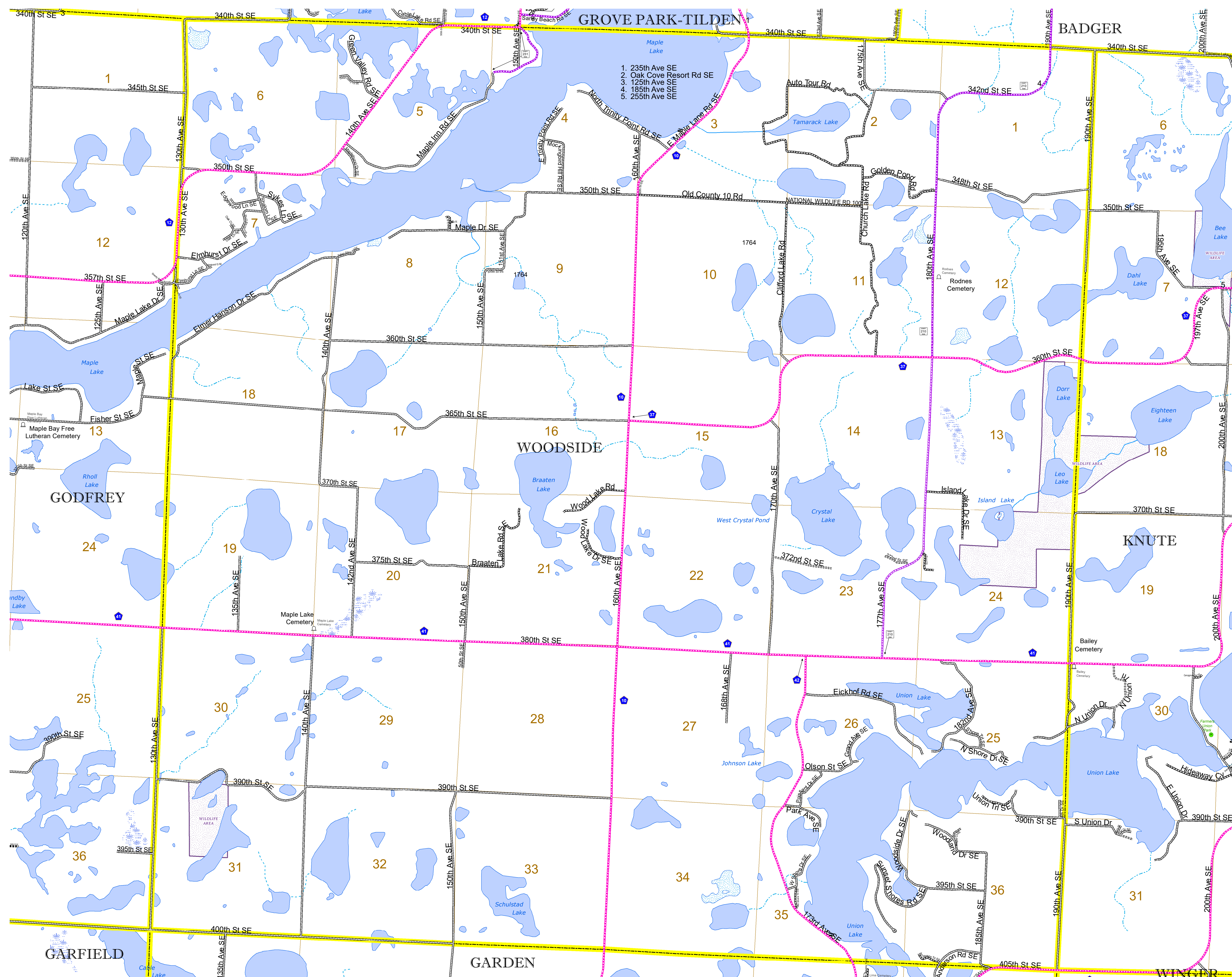
Projection:
Transverse Mercator
NAD 1986
UTM Zone 15

North American Datum
of 1986

| ROAD AND ROADWAY FEATURES | | BOUNDARY FEATURES | |
|------------------------------------|----------|---------------------------------------|----------|
| INTERSTATE | [Symbol] | CONCRETE | [Symbol] |
| US HIGHWAY | [Symbol] | BITUMINOUS | [Symbol] |
| MN HIGHWAY | [Symbol] | GRAVEL | [Symbol] |
| COUNTY STATE AID HIGHWAY | [Symbol] | DIRT/UNIMPROVED | [Symbol] |
| COUNTY ROAD | [Symbol] | OTHER | [Symbol] |
| TOWNSHIP ROAD | [Symbol] | UNKNOWN | [Symbol] |
| UNORGANIZED TERRITORY ROAD | [Symbol] | | |
| OTHER ROADS | | | |
| Municipal | [Symbol] | RAMP OR CONNECTOR | [Symbol] |
| Private | [Symbol] | INTERSTATE EXIT | [Symbol] |
| National Monument | [Symbol] | GREAT RIVER ROAD | [Symbol] |
| National Park | [Symbol] | | |
| National Wildlife | [Symbol] | | |
| State Game | [Symbol] | | |
| Military | [Symbol] | | |
| | | | |
| RAILROAD AND RAILWAY FEATURES | | AVIATION FEATURES | |
| EMPIRE BUILDER STATION (AMTRAK) | [Symbol] | COMMERCIAL AIRPORT | [Symbol] |
| NORTHSTAR STATION (COMPUTER) | [Symbol] | GENERAL AIRPORT | [Symbol] |
| | | AIRSTRIP | [Symbol] |
| | | SEAPLANE | [Symbol] |
| | | AIRPORT RUNWAY | [Symbol] |
| | | | |
| INFRASTRUCTURE FEATURES | | BOUNDARY FEATURES | |
| LONG BRIDGE (200' OR GREATER SPAN) | [Symbol] | TRIBAL LAND | [Symbol] |
| MAJOR BRIDGE (20' TO 200' SPAN) | [Symbol] | STATE OF MINNESOTA | [Symbol] |
| MINOR BRIDGE (5' TO 20' SPAN) | [Symbol] | COUNTY | [Symbol] |
| DAM | [Symbol] | MUNICIPALITY | [Symbol] |
| LOCK-AND-DAM | [Symbol] | UNORGANIZED TERRITORY | [Symbol] |
| | | FEDERAL ADJUSTED URBAN AREA (2014) | [Symbol] |
| | | CIVIL TOWNSHIP | [Symbol] |
| | | CONGRESSIONAL TOWNSHIP | [Symbol] |
| | | SECTION | [Symbol] |
| | | MILITARY | [Symbol] |
| | | VOYAGEURS NATIONAL PARK | [Symbol] |
| | | BOUNDARY WATERS CANOE AREA WILDERNESS | [Symbol] |
| | | STATE PARK | [Symbol] |
| | | REGIONAL PARK | [Symbol] |
| | | NATIONAL FOREST | [Symbol] |
| | | NATIONAL AND STATE FOREST | [Symbol] |
| | | STATE FOREST | [Symbol] |
| | | WILDLIFE REFUGE AREA | [Symbol] |
| | | WILDLIFE MANAGEMENT AREA | [Symbol] |
| | | HYDROLOGIC FEATURES | |
| | | RIVER OR STREAM (PERENNIAL) | [Symbol] |
| | | LAKE, POND OR RESERVOIR | [Symbol] |
| | | STREAM (INTERMITTENT) | [Symbol] |
| | | DRAINAGE DITCH | [Symbol] |
| | | WETLAND | [Symbol] |
| | | ISLAND OR LAND | [Symbol] |
| | | REGIONAL WATERSHED | [Symbol] |



Population (U.S. Census 2010): 505



To request information from this document in an alternative format, call 651-366-4718 or 1-800-657-3774 (Greater Minnesota); 711 or 1-800-627-3529 (Minnesota Relay). You may also send an e-mail to ADarequest.dot@state.mn.us. (Please request at least one week in advance.)