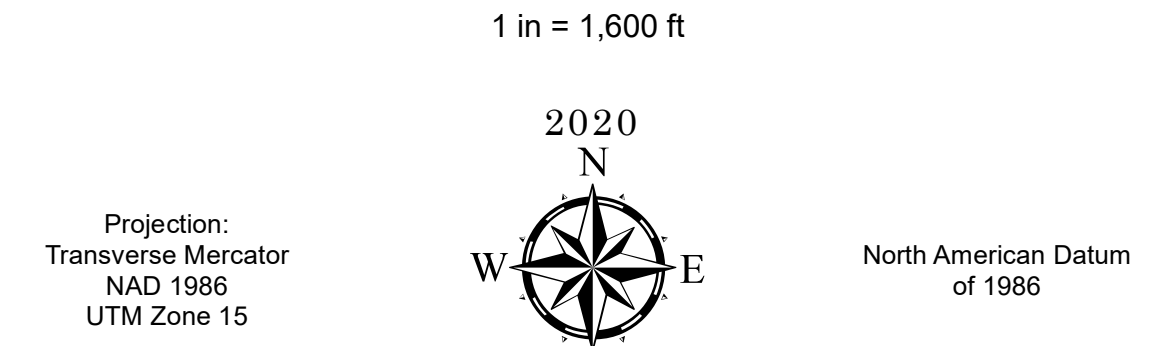
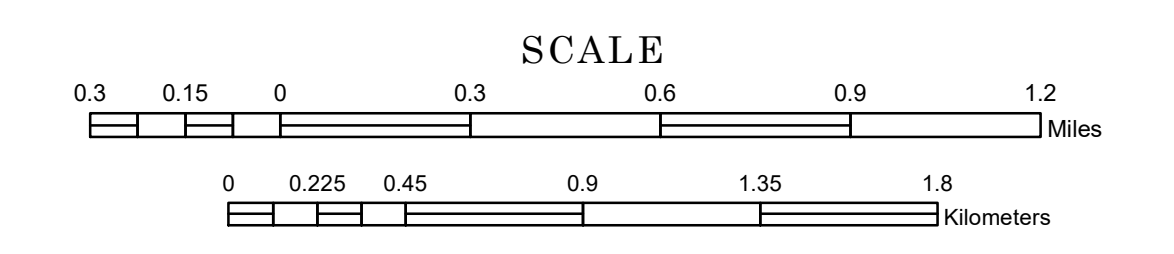
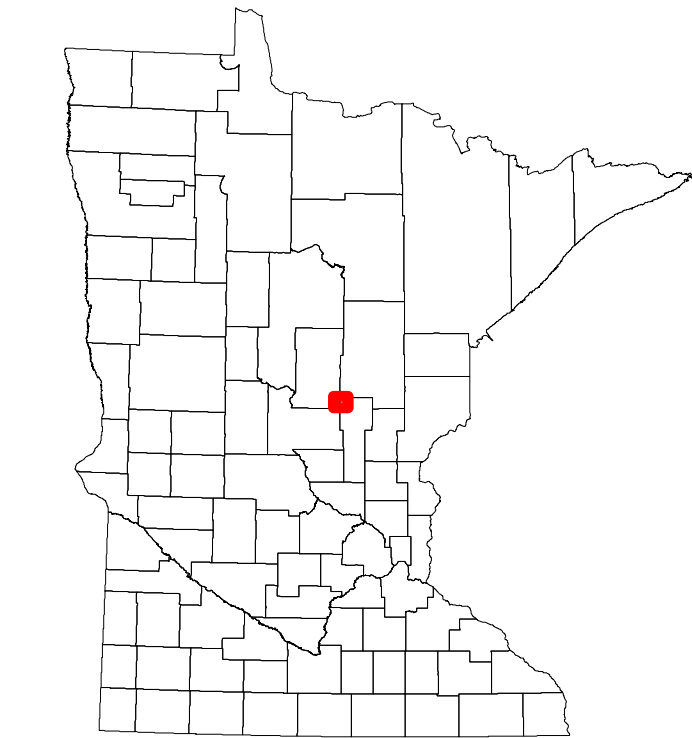


TRIBAL GOVERNMENT MAP
MILLE LACS - VINELAND COMMUNITY
 PREPARED BY THE
 MINNESOTA DEPARTMENT OF TRANSPORTATION
 OFFICE OF TRANSPORTATION SYSTEM MANAGEMENT

IN COOPERATION WITH
 U.S. DEPARTMENT OF TRANSPORTATION
 FEDERAL HIGHWAY ADMINISTRATION



ROAD AND ROADWAY FEATURES	PUBLIC SERVICE FEATURES
INTERSTATE	MINDOT OFFICE
US HIGHWAY	MINDOT TRUCK STATION
MN HIGHWAY	HIGHWAY PATROL DISTRICT OFFICE
COUNTY STATE AID HIGHWAY	STATE TRAVEL INFORMATION CENTER
COUNTY ROAD	REST AREA (Full Service)
MUNICIPAL STATE AID STREET	REST AREA (Vault Toilet)
MUNICIPAL STREET	WAYSIDE (Vault or Pit Toilet)
PRIVATE STREET/ROAD	LOCAL PARK
TOWNSHIP ROAD	PUBLIC ACCESS POINT
UNORGANIZED TERRITORY ROAD	FAIRGROUNDS
RAMP OR CONNECTOR	PORT OF ENTRY
INTERSTATE EXIT	PARK AND RIDE LOT
GREAT RIVER ROAD	MIN STATE COLLEGE AND UNIVERSITY SYSTEM (MNSCU)
OTHER ROADS	UNIVERSITY OF MN SYSTEM
Firehouse	CULTURAL FEATURES
Home Service	STATE HISTORICAL MARKER
Mun. Fire	HISTORIC DISTRICT
Mun. Police	HISTORIC SITE
	MONUMENT
	BOUNDARY FEATURES
	TRIBAL LAND
	COUNTY
	MUNICIPALITY
	ADJACENT MUNICIPALITY
	FEDERAL ADJUSTED URBAN AREA (2014)
	MILITARY
	VOYAGEURS NATIONAL PARK
	BOUNDARY WATERS CANOE AREA WILDERNESS
	STATE PARK
	REGIONAL PARK
	NATIONAL FOREST
	NATIONAL AND STATE FOREST
	STATE FOREST
	NATIONAL TRAIL
	WILDLIFE REFUGE AREA
	WILDLIFE MANAGEMENT AREA
	HYDROLOGIC FEATURES
	RIVER OR STREAM (Perennial)
	LAKE, POND OR RESERVOIR
	STREAM (Intermittent)
	DRAINAGE DITCH
	WETLAND
	ISLAND OR LAND
	REGIONAL WATERSHED
	CITY CENTERS
	TRIBAL GOVERNMENT CENTER
	CITY CENTER
	LOCALLY KNOWN PLACE
	UNINCORPORATED COMMUNITY



Population (U.S. Census 2000):

To request information from this document in an alternative format, call 651-366-4718 or 1-800-657-3774 (Greater Minnesota); 711 or 1-800-627-3529 (Minnesota Relay). You may also send an e-mail to ADarequest.dot@state.mn.us. (Please request at least one week in advance.)