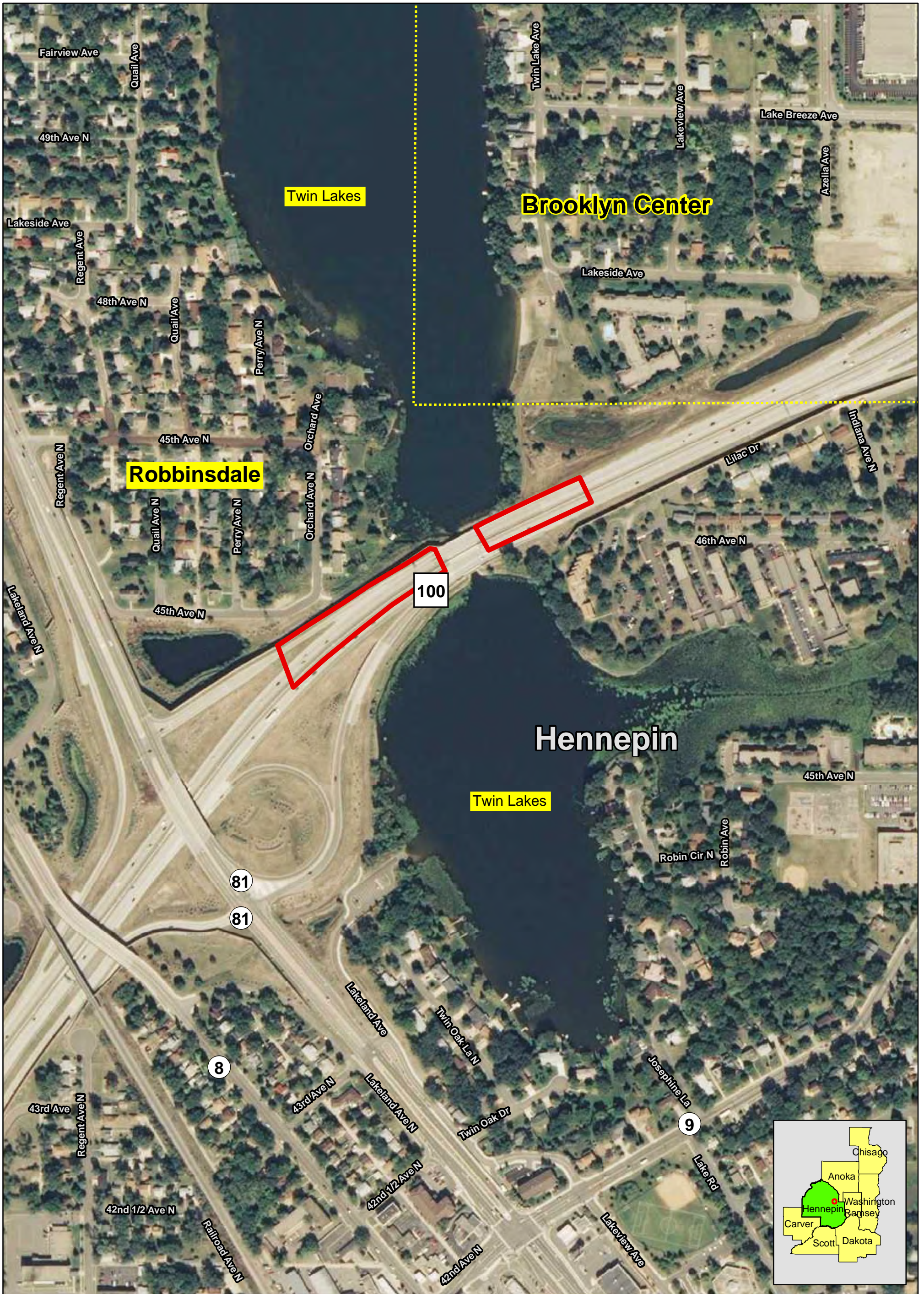


Legend

- MSE Type Walls
- Special Design Embankments

**Fabric Reinforced Soil Slope
East side of NB TH 100 between Glenwood Ave.
and Lilac Drive in Golden Valley
SP 2735-134**



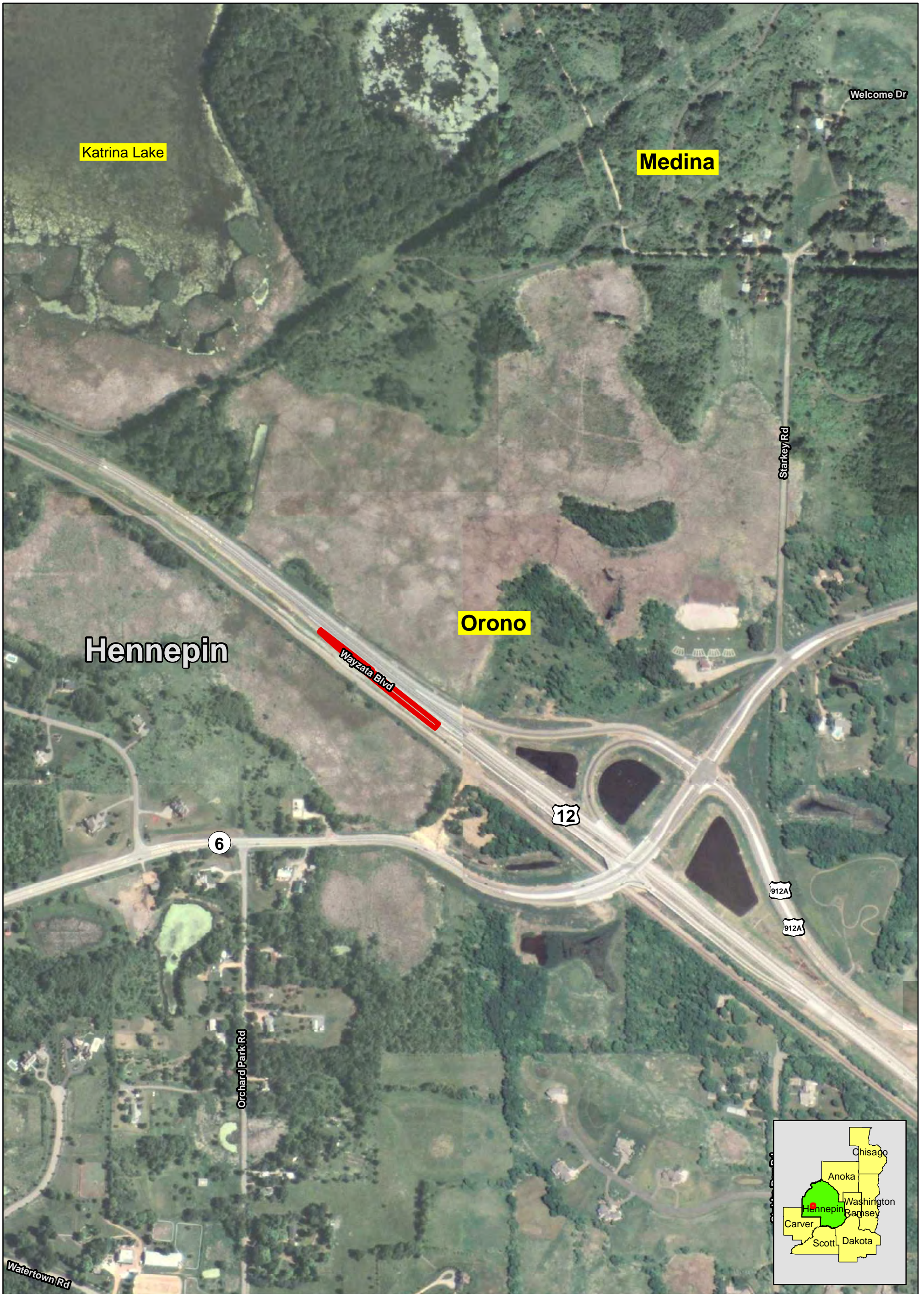


Legend

- MSE Type Walls
- Special Design Embankments

Geofoam Fill
 Under NB & SB TH 100 between CSAH 81 & south end of Twin Lakes bridge, and under NB & SB TH 100 between north end of Twin Lakes bridge and Indiana Ave. in Robbinsdale
 SP 2735-159



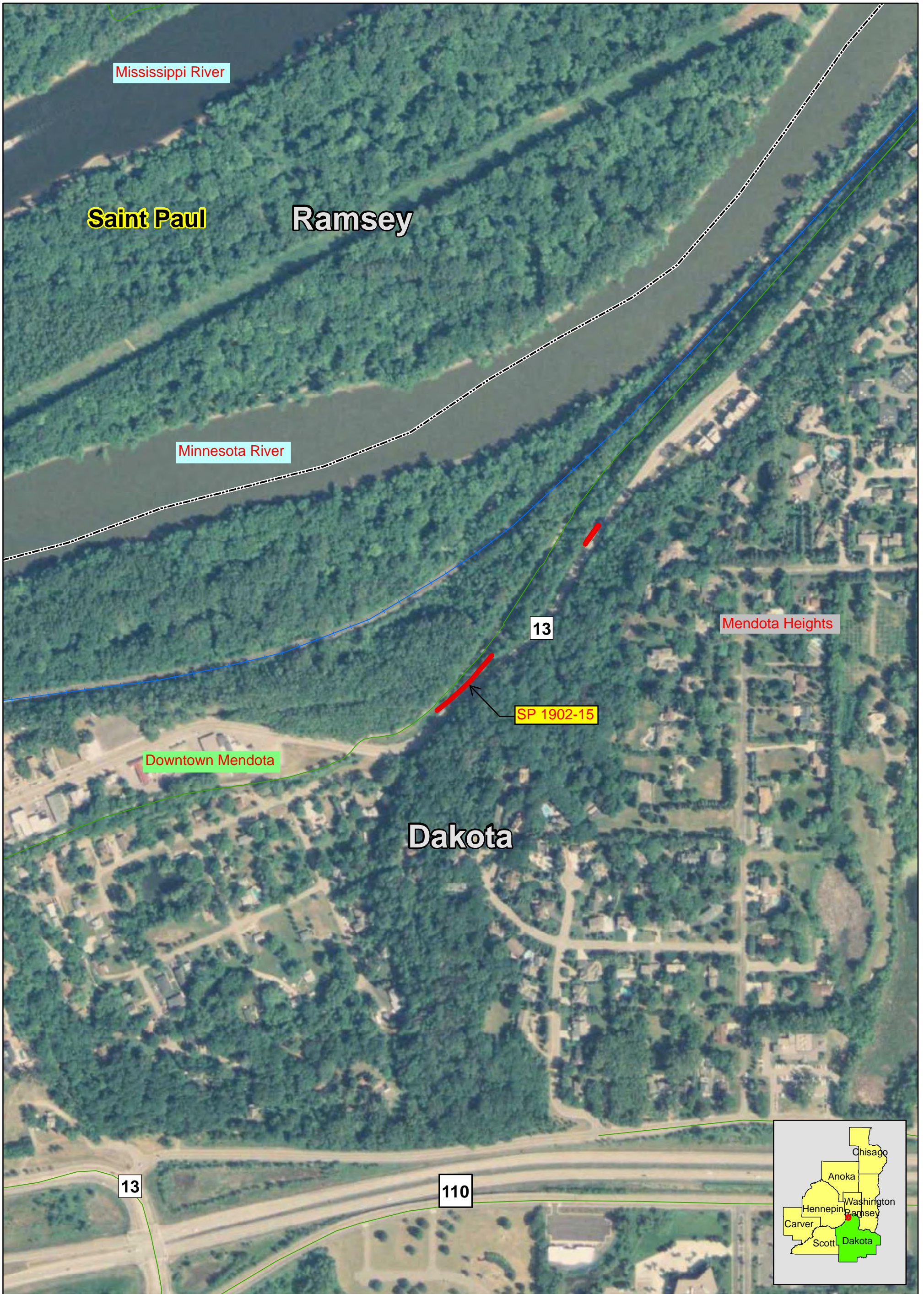




Legend

- MSE Type Walls
- Special Design Embankments

**Geofoam
 Along EB TH 12 just west of 6th Ave.
 (Co. Rd. 6) in Orono and Medina
 SP 2713-83**

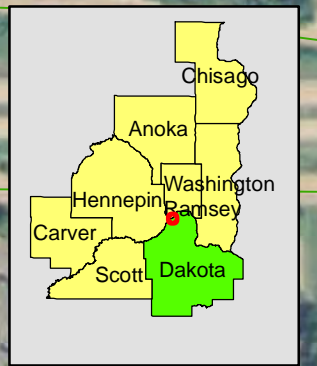
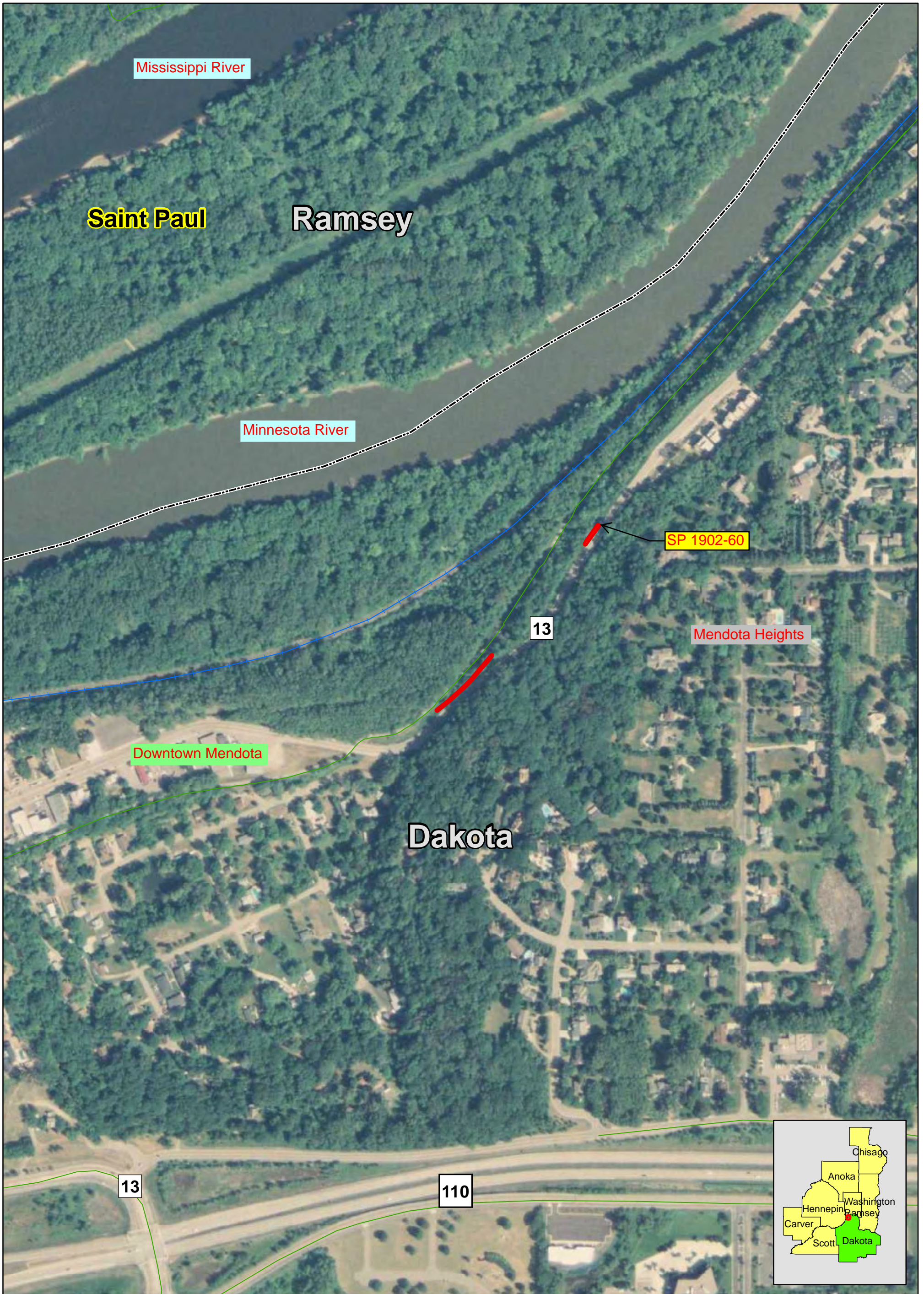




Legend	
	MSE Type Walls
	Special Design Embankments

**Crib Wall
 Along WB TH 13, just outside of downtown
 Mendota in Mendota Heights
 SP 1902-15**





Legend

- MSE Type Walls
- Special Design Embankments

**Reinforced Soil Slope (Nailed)
Along WB TH 13, just outside of downtown
Mendota in Mendota Heights
SP 1902-60**



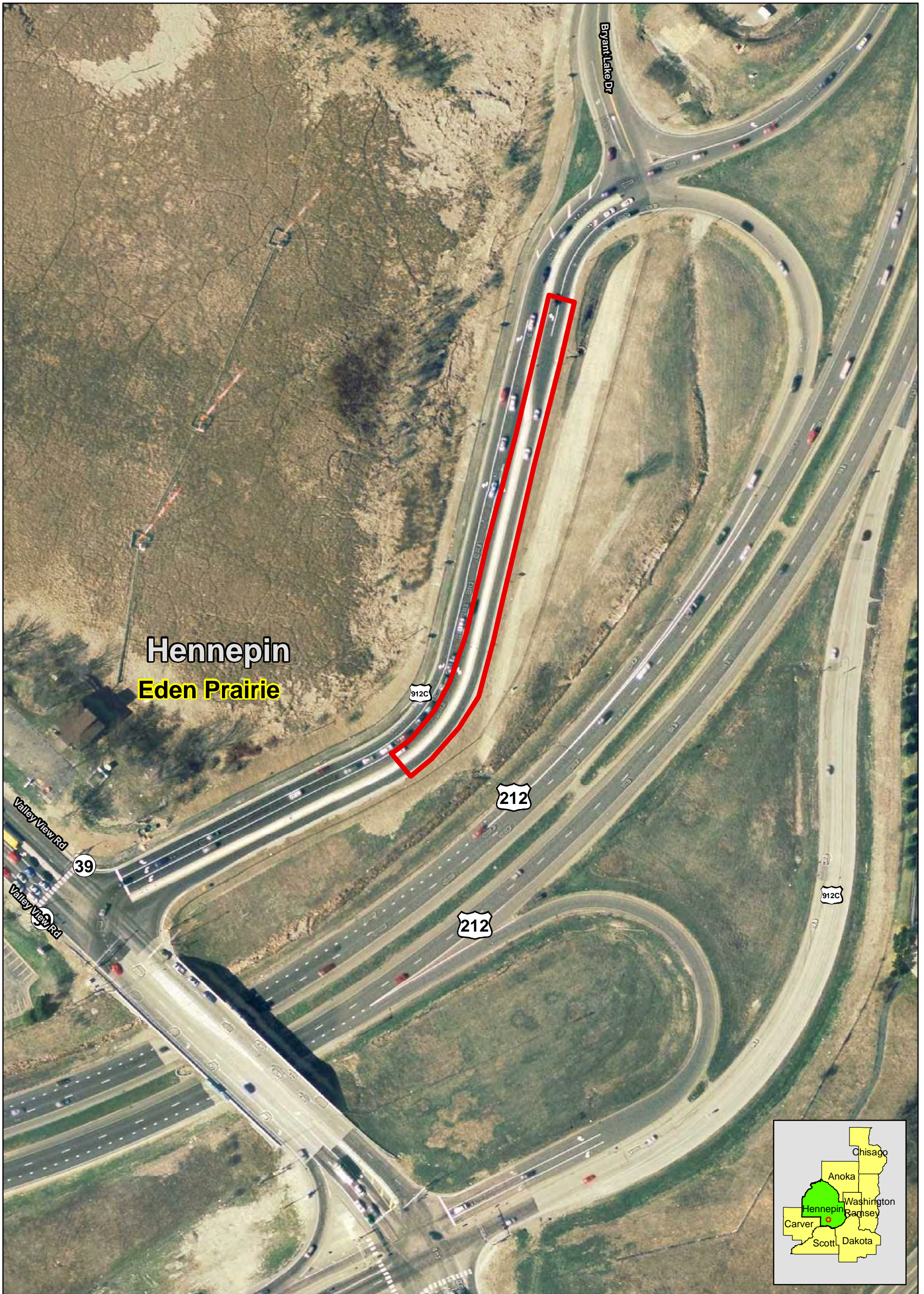


Legend

- MSE Type Walls
- Special Design Embankments

**Reinforced Soil Slope
 West side of TH 20 and 100' north of
 W Hoffmann St. in downtown Cannon Falls
 SP 1903-06**





Hennepin
Eden Prairie

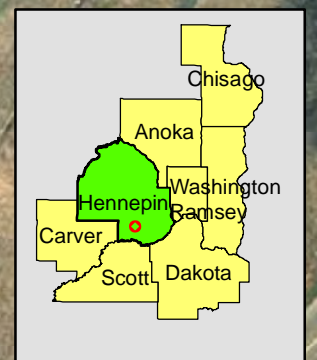
912C

212

212

912C

39

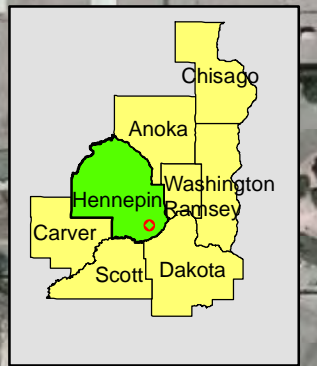
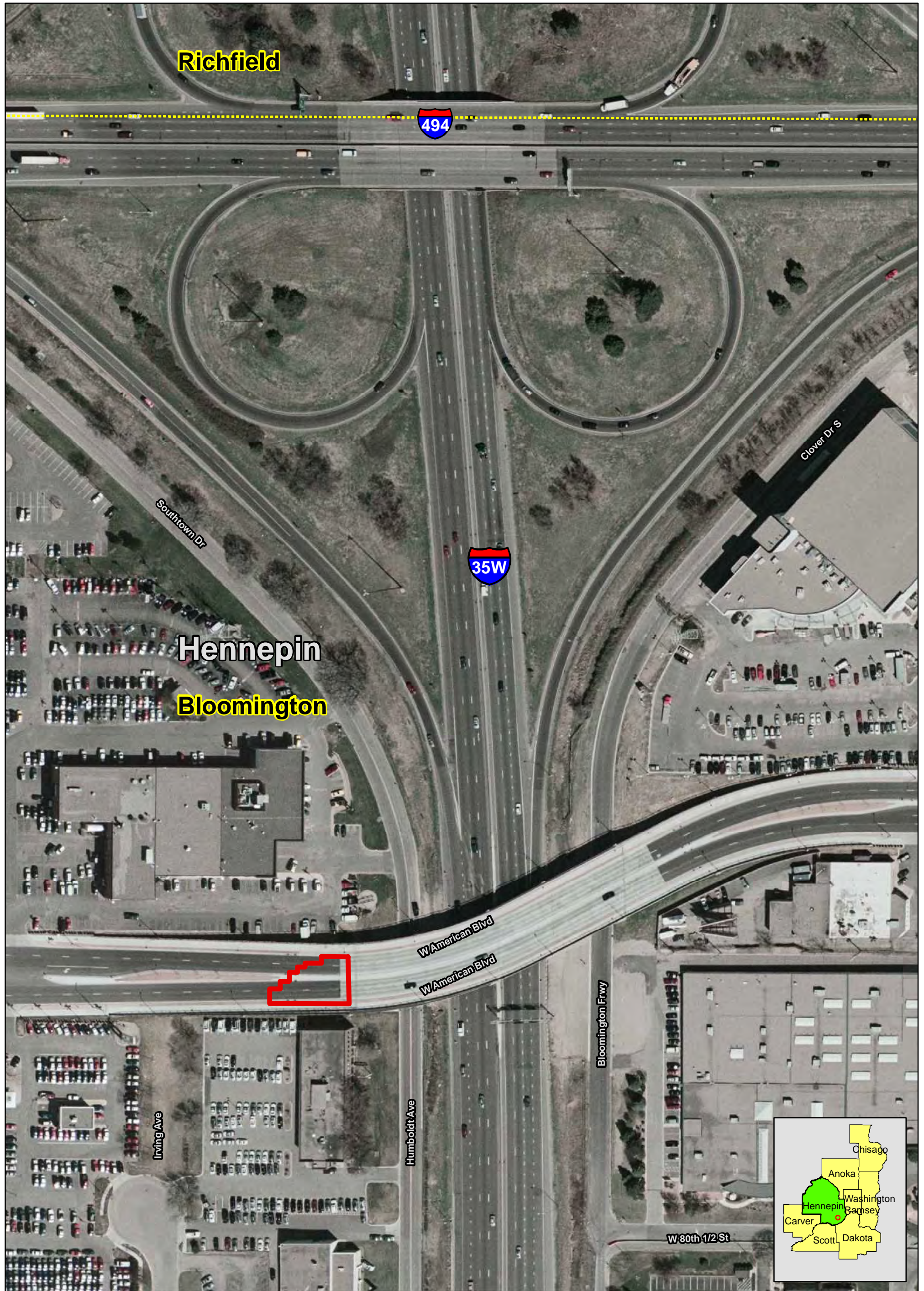


Legend

- MSE Type Walls
- Special Design Embankments

**Cellular Concrete Fill
Along Bryant Lake Dr. just to the NE
of Valley View Rd. and adjacent to
SB TH 212 in Eden Prairie
SP 2745-29**



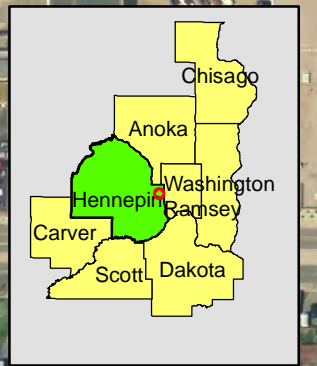


Legend

- MSE Type Walls
- Special Design Embankments

**Geofoam Blocks and Geomembrane
Adjacent to west end of American Blvd.
(W 79th/80th Ave.) bridge over TH 35W
in Bloomington
SP 2782-277**





Legend

- MSE Type Walls
- Special Design Embankments

**PVC Drain Tile
 Along NB & SB 35W between E Hennepin Ave
 and W Broadway Ave. in Minneapolis
 SP 2783-107**





Legend

- MSE Type Walls
- Special Design Embankments

**Geotextile/Gravel Membrane
Under EB & WB TH 36 between McKnight Rd.
and Century Ave. in No. St. Paul
SP 6211-81**



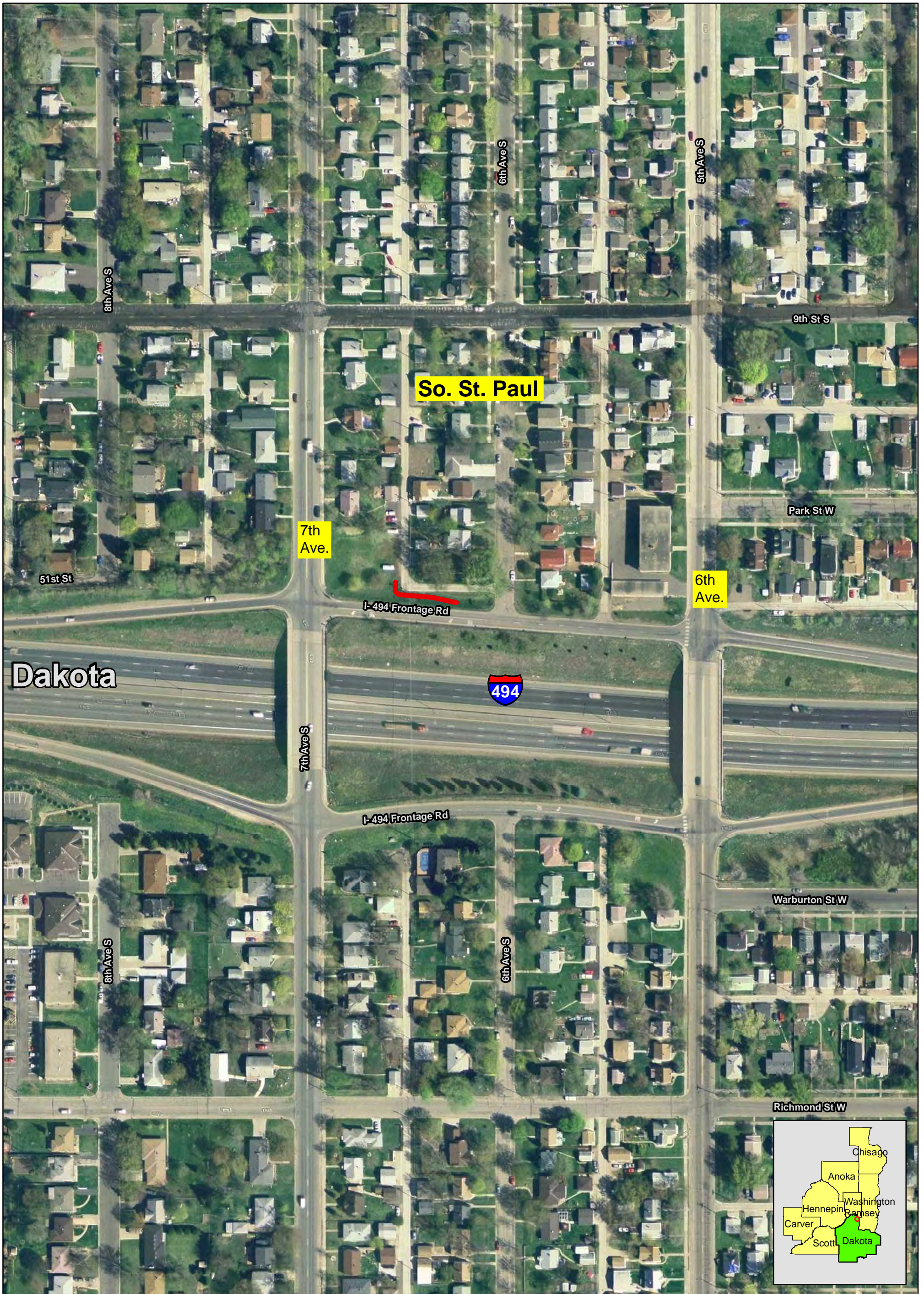


Legend

- MSE Type Walls
- Special Design Embankments

Geotextile Fabric
Just south of EB TH 36 and exit ramp
to CSAH 23 in Oak Park Heights
SP 8214-134





Dakota

So. St. Paul

7th Ave.

6th Ave.

494

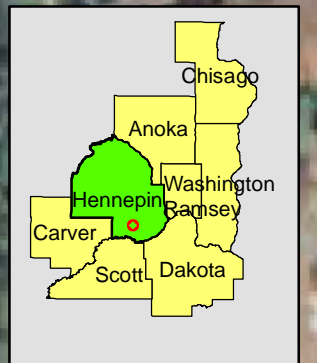


Legend

- MSE Type Walls
- Special Design Embankments

**Reinforced Soil Slope
North of WB TH 494 along North Frontage Rd.
between 6th & 7th Ave's in So. St. Paul
SP 1985-133**





Legend

- MSE Type Walls
- Special Design Embankments

**Subsurface Drainage Blanket
Under EB & WB TH 494 at the interchange
with TH 169 in Edina and Bloomington
SP 2785-327**





Saint Paul **Maplewood** **Ramsey**

Maxwell Ave
Point Douglas Rd

494

20 Bailey Rd.

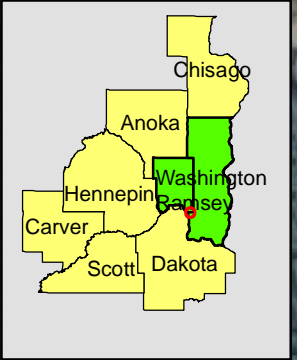


61
61



Washington

Newport

Hastings Ave



Legend

-  MSE Type Walls
-  Special Design Embankments

**Reinforced Soil Slope
Along the north side of Bailey Rd.,
just east of SB TH 494 in Newport
SP 8285-79**





Legend

- MSE Type Walls
- Special Design Embankments

**Reinforced Soil Slope (Nailed)
 Along NB TH 52 between 11th St. E and
 Inver Grove Tr. in Inver Grove Heights
 SP 1907-68**





Hennepin

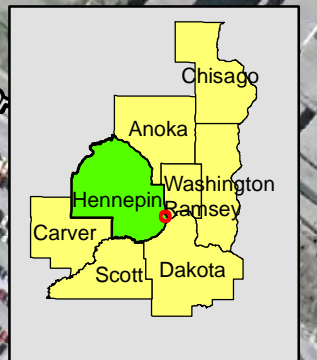
Unorganized Territory of Fort Snelling

62

55

Minnehaha Ave

Federal Dr



Legend



- MSE Type Walls
- Special Design Embankments

Geosynthetic Liner Membrane under EB & WB TH 62 at the interchange with TH 55 SP 2725-59





Legend

-  MSE Type Walls
-  Special Design Embankments

Geofoam Fill
North & south ends of Edgerton St. bridge
over TH 35E/694 in Vadnais Heights
SP 6280-317





Lake Virginia

Carver

Virginia Shores Circle

7

LRT Trail

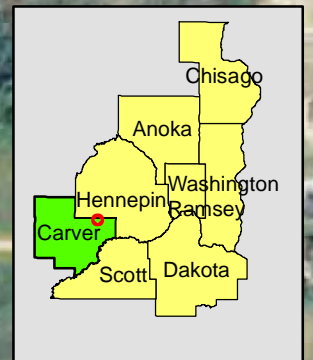
Fox Glove Cir

Victoria

Interlachen Rd

Aster Cir

Aster Tr

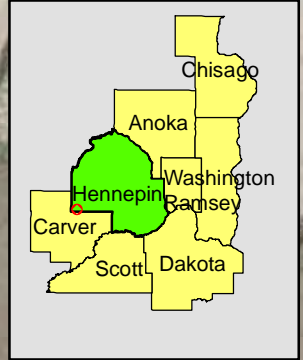


Legend

- MSE Type Walls
- Special Design Embankments

**Reinforced Soil Slopes
 Along WB TH 7 between Virginia Shores Circle and
 the LRT Trail, and along EB TH 7 just to the east of
 the LRT Trail in Victoria
 SP 1004-26**





Legend

- MSE Type Walls
- Special Design Embankments

Reinforced Soil Slopes
At slopes adjacent to all 4 corners of the
TH 7 bridge over 6 Mile Creek in Minnetrista
SP 1004-24





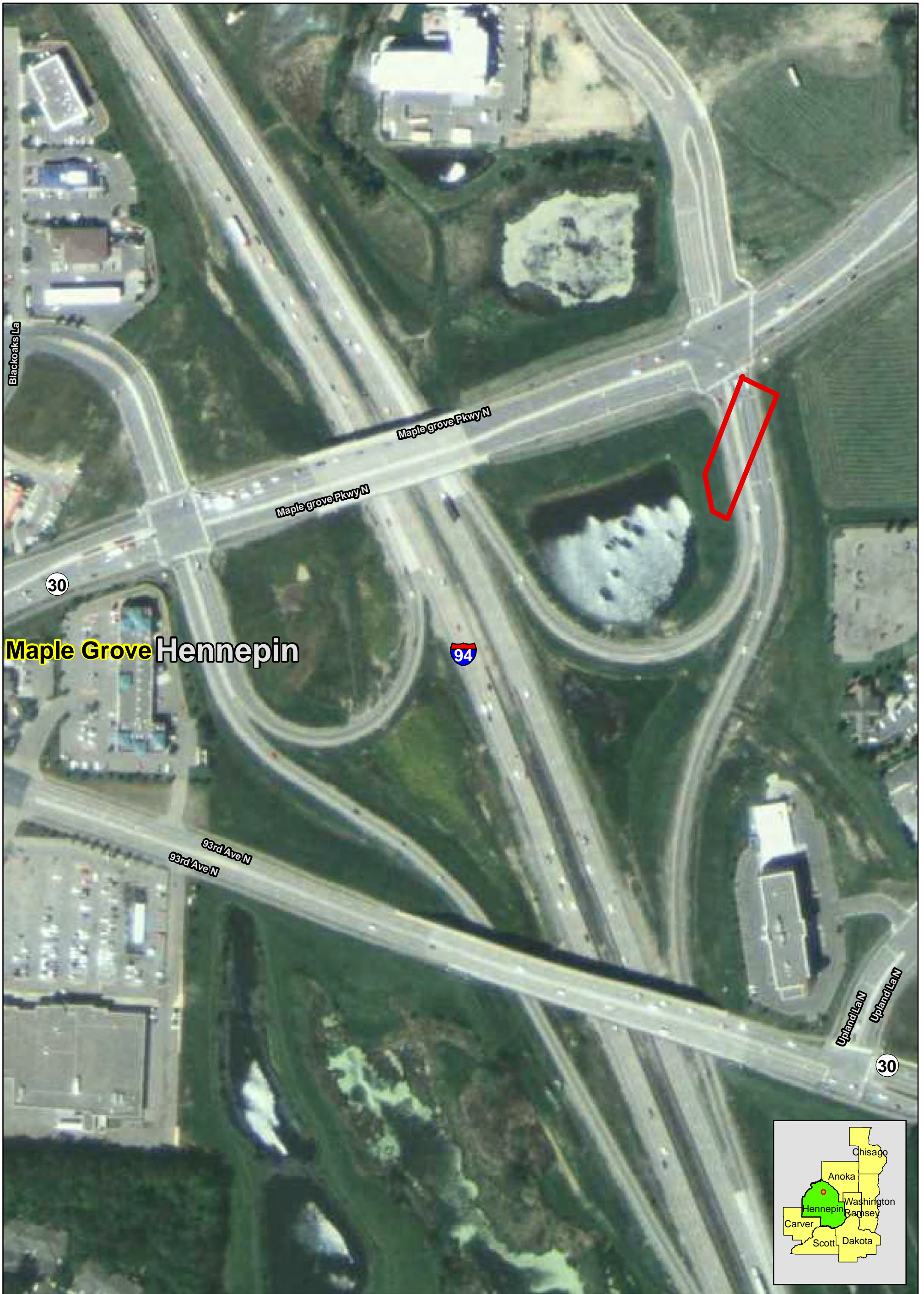
Valley View La

Legend

- MSE Type Walls
- Special Design Embankments

Reinforced Earth Wall (Nailed)
Along NB side of TH 8/95 approx. 2 miles
south of downtown Taylors Falls
SP 1301-100





Maple Grove Hennepin



Legend

- MSE Type Walls
- Special Design Embankments

**Shredded Tire Fill
 Intersection of Ramp A & Loop B at new
 alignment of Maple Grove Parkway over
 TH 94 in Maple Grove
 SP 2780-52**





Sunrise Chisago

Saint Croix Tr

95

Sunrise Township

Lantz Ave



Legend

- MSE Type Walls
- Special Design Embankments

Reinforced Soil Slope
North side of TH 95, starting approx. 200'
west of Lantz Ave. in Sunrise Township
SP 1306-38





Legend

- MSE Type Walls
- Special Design Embankments

Reinforced Soil Slope
 East side of TH 95, approx. 2 miles
 south of TH 8 in Franconia Township
 SP 8825-88

