






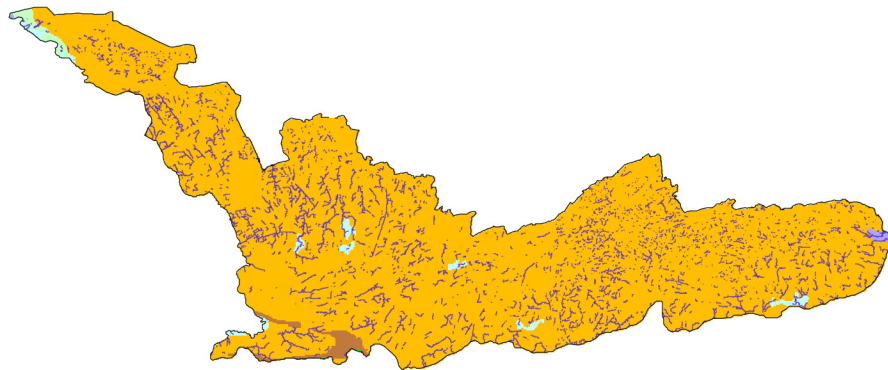









a

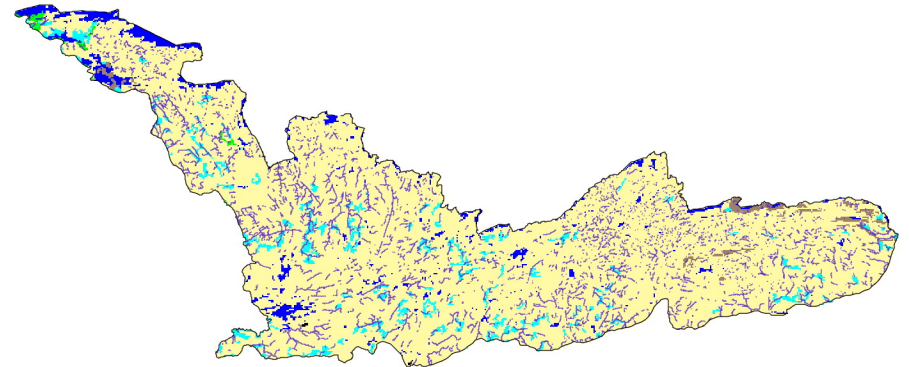
-  Streams
-  Ground moraine
-  End moraine
-  Glacial lake sediment (clay)
-  Lake-modified till
-  Outwash
-  Peat



**Generalized Quaternary Geology**

b

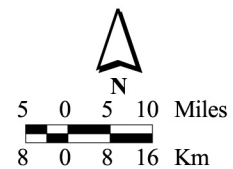
-  Streams
-  Peat/bogs
-  Poorly-drained soils
-  Well-drained soils
-  Rock
-  Mines and/or dumps
-  Water



**Generalized Soils**

## Geology and Soils

Border Lakes



Minnesota Archaeological Predictive Model