





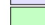
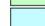

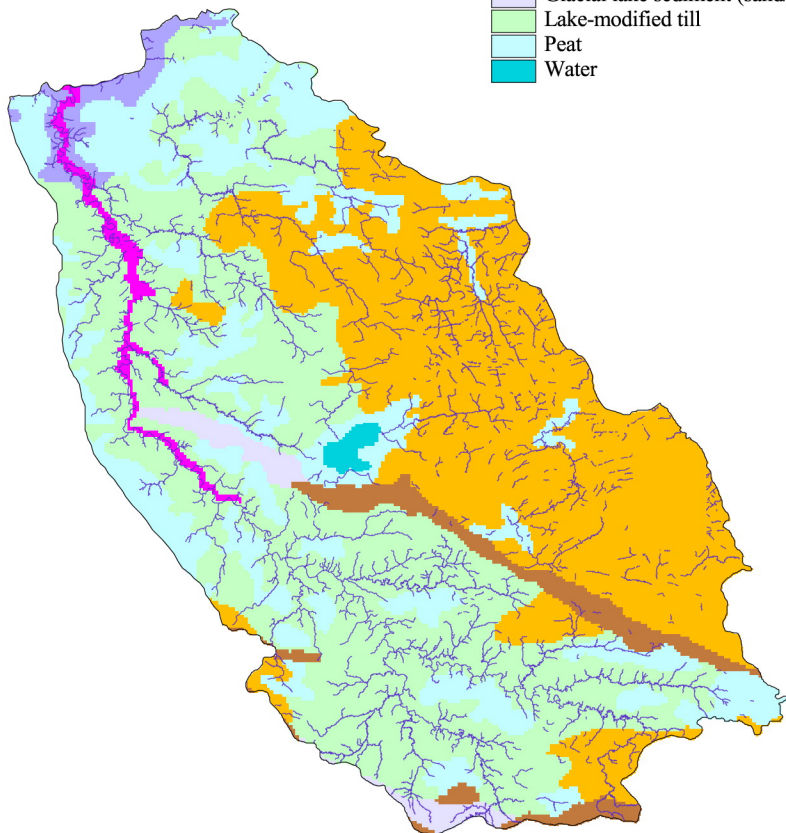









a

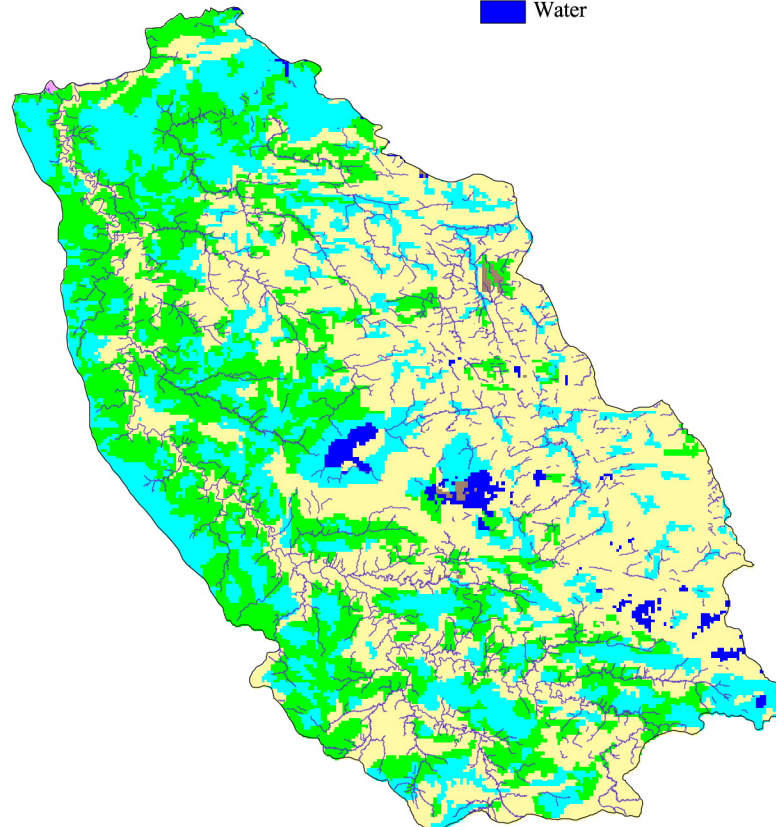
-  Streams
-  Alluvium
-  Ground moraine
-  End moraine
-  Glacial lake sediment (clay)
-  Glacial lake sediment (sand/gravel)
-  Lake-modified till
-  Peat
-  Water



Generalized Quaternary Geology

b

-  Streams
-  Peat/bogs
-  Alluvial soils
-  Poorly-drained soils
-  Well-drained soils
-  Rock
-  Water



Generalized Soils

Geology and Soils

Littlefork-Vermilion Uplands

