

## **Appendix A. Errata to the Tier 2 Project Level EA**

Page 4-176, **Regulatory Context and Methodology**, insert “and Wis. Administrative Code, Subsection HS 2.04” into the last line of the first paragraph.

Page 4-233 and 4-234, **Build Alternative – Construction: Parks and Recreation Areas and Wildlife Refuges**, the NLX Project will not affect the following parks and they are removed from the bulleted list of impacted properties.

- Community Park, Fridley
- Bluebird Park, Isanti
- Daughters of the American Revolution State Forest, Askov

Remove the Coon Rapids Boulevard Extension Northwest Trail from the list of trails that would be temporarily closed during project construction. The trail would not be impacted.

**Appendix D** maps, pages 15. 51 and 130 in the Tier 2 EA are updated to reflect changes noted above.

Page 4-157 and 4-158, **Table 4-62: Summary of Noise Mitigation Effectiveness**, the following highlighted the corrections are made.

Receptor Location <sup>a</sup>	Number of Moderate and Severe Noise Impacts					
	Sandstone Maintenance Facility		Duluth Maintenance and/or Layover Facility		With Municipality-Developed Quiet Zones	
	Without Mitigation		Without Mitigation			
	Moderate	Severe	Moderate	Severe	Moderate	Severe
Minneapolis	4 Residential	0	4 Residential	0	4 Residential	0
Fridley	0	0	0	0	0	0
Coon Rapids	0	0	0	0	0	0
Andover	7 Residential 1 School	0	7 Residential 1 School	0	0	0
Bethel	7 Residential 1 Church	0	7 Residential 1 Church	0	0	0
Isanti	22 Residential 1 Church	0	22 Residential 1 Church	0	0	0
Cambridge	4 Residential 2 Churches 1 Cemetery 1 Daycare	9 Residential 1 Cemetery	4 Residential 2 Churches 1 Cemetery 1 Daycare	9 Residential 1 Cemetery	0	0
Stanchfield	11 Residential	2 Churches 1 Cemetery	11 Residential	2 Churches 1 Cemetery	0	0
Braham	12 Residential 1 Park	1 Park	12 Residential 1 Park	1 Park	0	1 Park

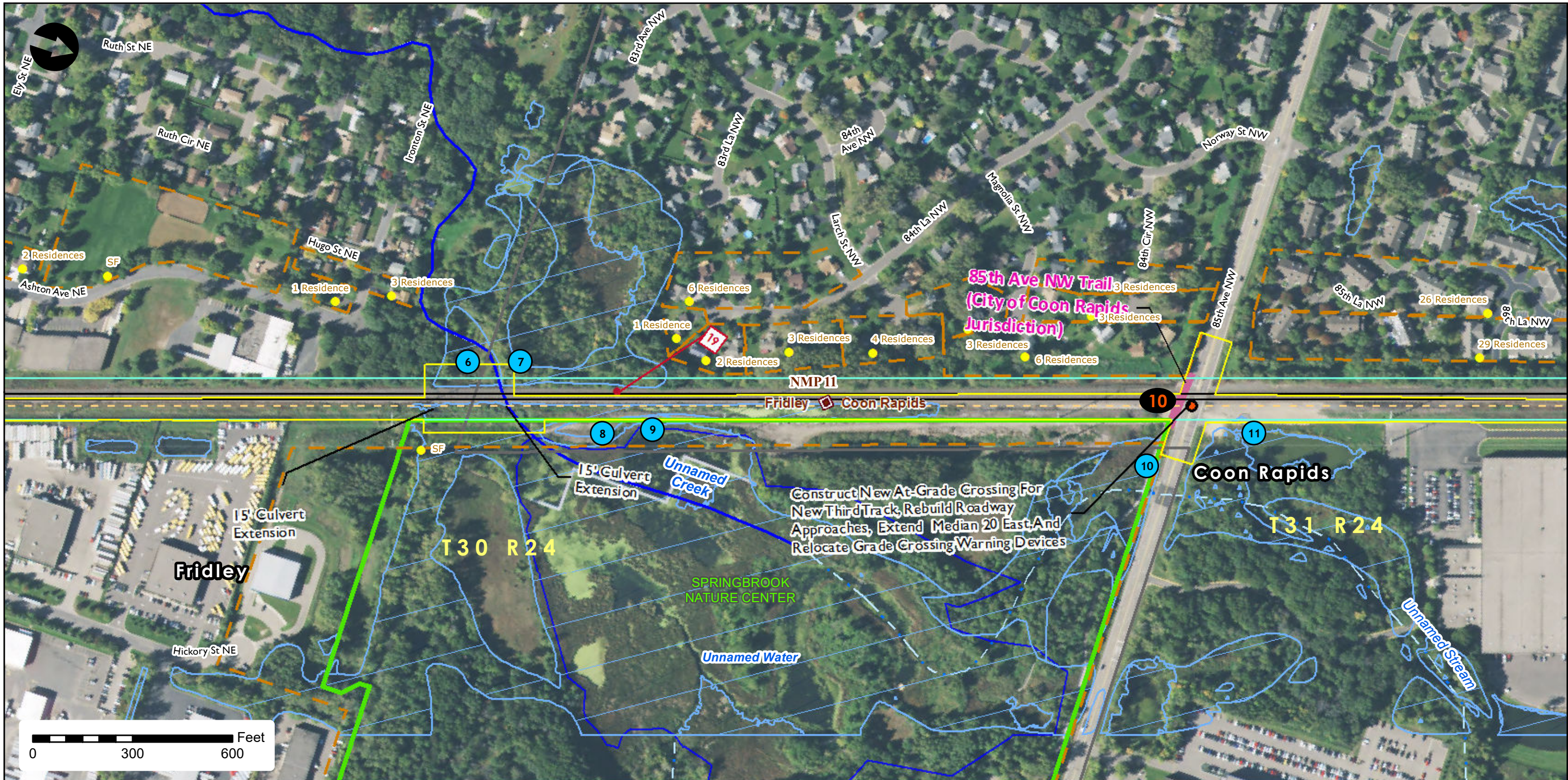
Receptor Location <sup>a</sup>	Number of Moderate and Severe Noise Impacts					
	Sandstone Maintenance Facility		Duluth Maintenance and/or Layover Facility		With Municipality-Developed Quiet Zones	
	Without Mitigation		Without Mitigation			
	Moderate	Severe	Moderate	Severe	Moderate	Severe
Grasston	2 Residential	0	2 Residential	0	0	0
Henriette	11 Residential	0	11 Residential	0	0	0
Brook Park	4 Residential	0	4 Residential	0	0	0
Hinckley	27 Residential	1 Residential 1 School 3 Churches 1 Park	27 Residential	1 Residential 1 School 3 Churches 1 Park	0	0
Sandstone	1 Residential 1 School 1 Church	2 Parks	1 Residential 1 School 1 Church	2 Parks	0	0
Askov	<del>13</del> 27 Residential 1 School 2 Churches 1 Park	1 Residential	13 Residential 1 School 2 Churches 1 Park	0	0	0
Bruno	4 Residential 1 School 1 Church		1 School 1 Church	0	0	0
Kerrick	<del>5</del> 7 Residential		1 Residential	0	0	0
Duquette	1 Park		1 Park	0	0	0
Nickerson	<del>7</del> 5 Residential		2 Residential	0	0	0
Holyoke	8 Residential	8 Residential	11 Residential	5 Residential	0	0
Superior, Wisconsin	65 Residential	65 Residential 1 School	95 Residential	18 Residential 1 School	0	0
Duluth	0	0	0	0 Residential	0	0
<b>Total</b>	<b>228 Residential</b> <b>4 Schools</b> <b>8 Churches</b> <b>3 Parks</b> <b>1 Daycare</b> <b>1 Cemetery</b>	<b>84 Residential</b> <b>2 Schools</b> <b>5 Churches</b> <b>4 Parks</b> <b>2 Cemeteries</b>	<b>234 Residential</b> <b>4 Schools</b> <b>8 Churches</b> <b>3 Parks</b> <b>1 Daycare</b>	<b>33 Residential</b> <b>2 Schools</b> <b>5 Churches</b> <b>4 Parks</b> <b>2 Cemeteries</b>	<b>4 Residential</b>	<b>1 Park</b>

<sup>a</sup> Unless otherwise noted, all locations are in Minnesota

Page 5-10, **Agency Coordination**, insert the following updated agency coordination with U.S. Environmental Protection Agency (EPA):

Serving as a Cooperating Agency for the NLX Project, the EPA submitted comments on the administrative draft Tier 2 EA on March 30, 2017. On April 5, 2017 FRA held a conference call with EPA staff to discuss FRA’s approach to addressing comments in the Tier 2 EA, indicating that due to lack of funding, many of the detailed evaluations would be more appropriately completed when the NLX Project is funded and moves into final

design and construction. As appropriate and necessary, MnDOT will supplement environmental documentation to fully address EPA's comments and recommendations.

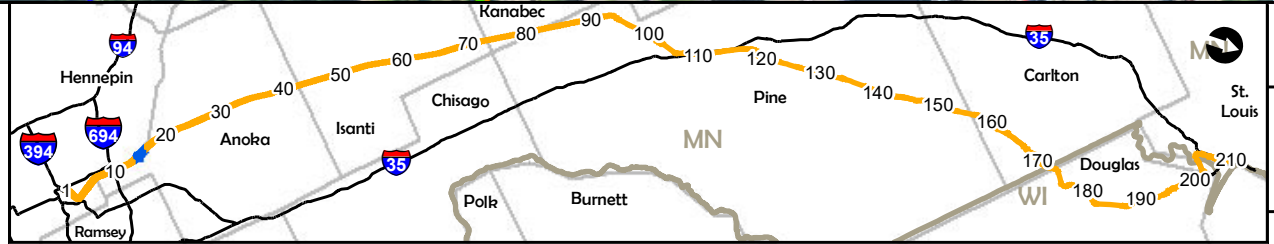


Path: \\mspe-gis-file\GISProj\HNTB\2439797\_2\_Work\_in\_Progress\Map\_Docs\Tier2\_EA\Appendix\_DetailedMap\_11x17L\_3600K.mxd - User: jwaller

<ul style="list-style-type: none"> <li>Northern Lights Express</li> <li>New Track</li> <li>Mile Post</li> </ul>	<ul style="list-style-type: none"> <li>Wetlands</li> <li>Impacted Wetland Number</li> <li>MN Public Water Watercourse</li> <li>MN Public Waters</li> <li>Stream</li> </ul>	<ul style="list-style-type: none"> <li>Construction Limits</li> <li>Trails (4f)</li> </ul>	<ul style="list-style-type: none"> <li>Railroad Right-of-Way</li> <li>Noise Reference Point</li> <li>Noise Receptor Clusters</li> <li>Noise Impacts           <ul style="list-style-type: none"> <li>No Impact - Both Maintenance Facilities</li> </ul> </li> </ul>	<ul style="list-style-type: none"> <li>At Grade Crossings (see At Grade Index for additional information)</li> <li>Parks (4f)</li> <li>State</li> <li>County</li> <li>City / Township Boundary</li> </ul>
---	--	--	---	---

| A-5 |

**NORTHERN LIGHTS EXPRESS**



**Tier 2 Detailed Environment Maps**  
Tier 2 Project Level EA

U.S. Department of Transportation  
FEDERAL TRANSIT ADMINISTRATION

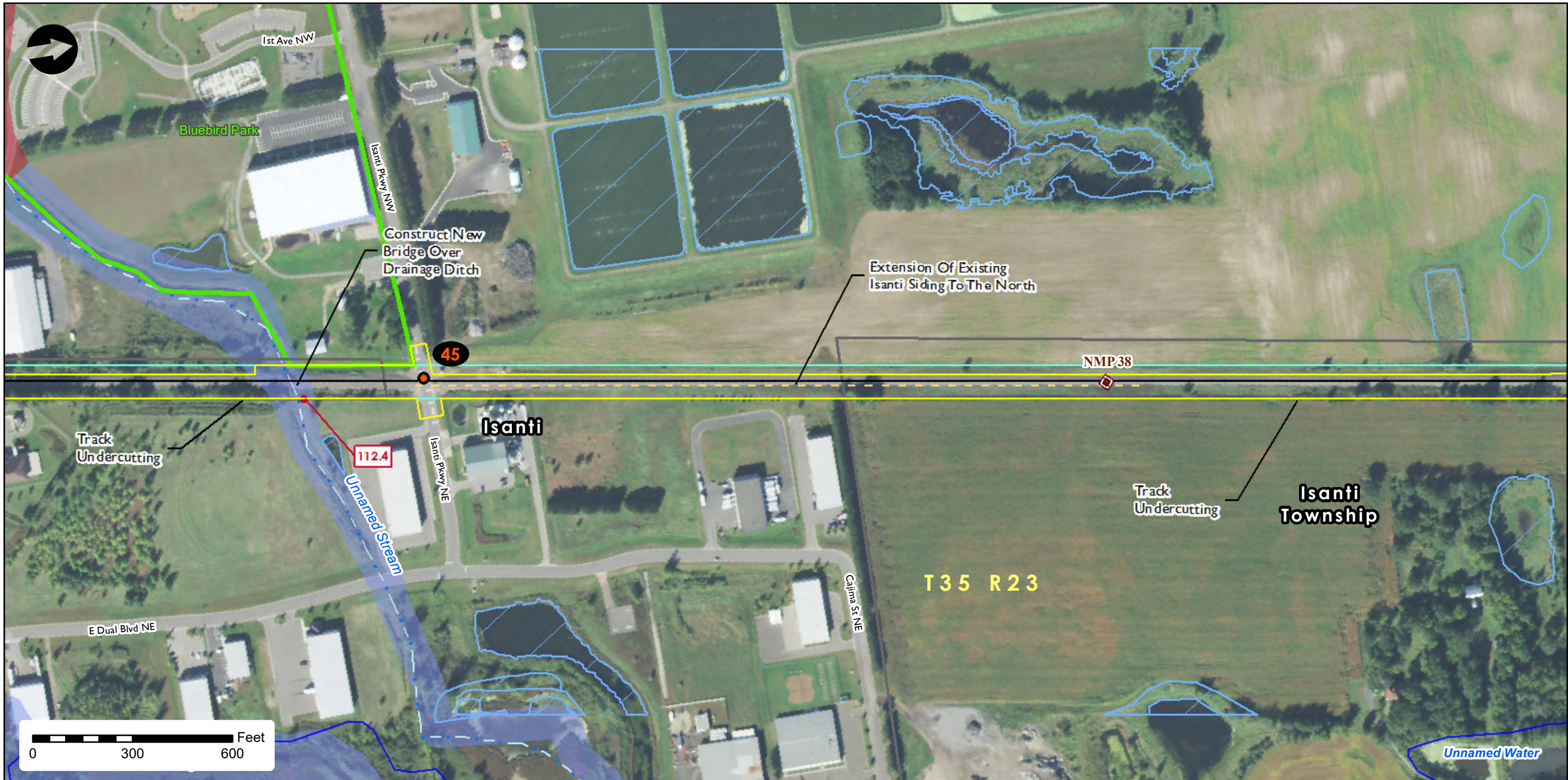
**mn**  
DEPARTMENT OF TRANSPORTATION

**NLX**  
NORTHERN LIGHTS EXPRESS

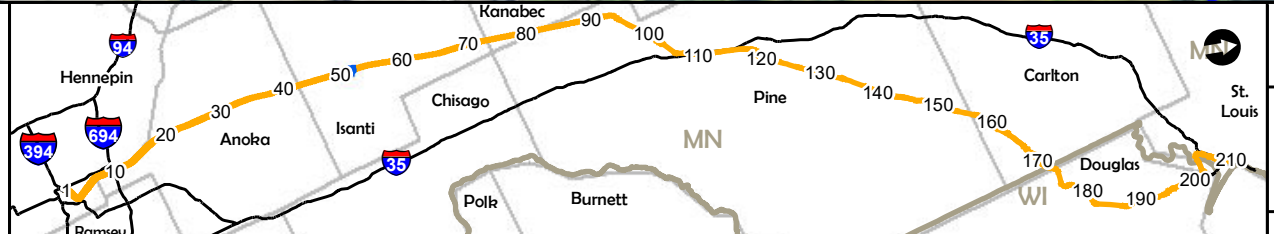
DATE: 6/8/2017
STATE: Minnesota
COUNTY: Anoka
Aerials: 2015 NAIP Original 11x17 L
PAGE: 15 of 211

NLX SEGMENT: 3 SUBDIVISION: Staples

Path: \\mspe-gis-file\GISProj\HNTB\2439797\_2\_Work\_in\_Progress\Map\_Docs\Tier2\_EA\Appendix\_DetailedMap\_11x17L\_3600K.mxd - User: jwallier

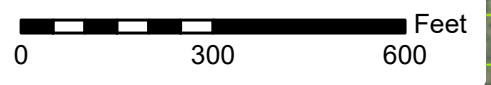
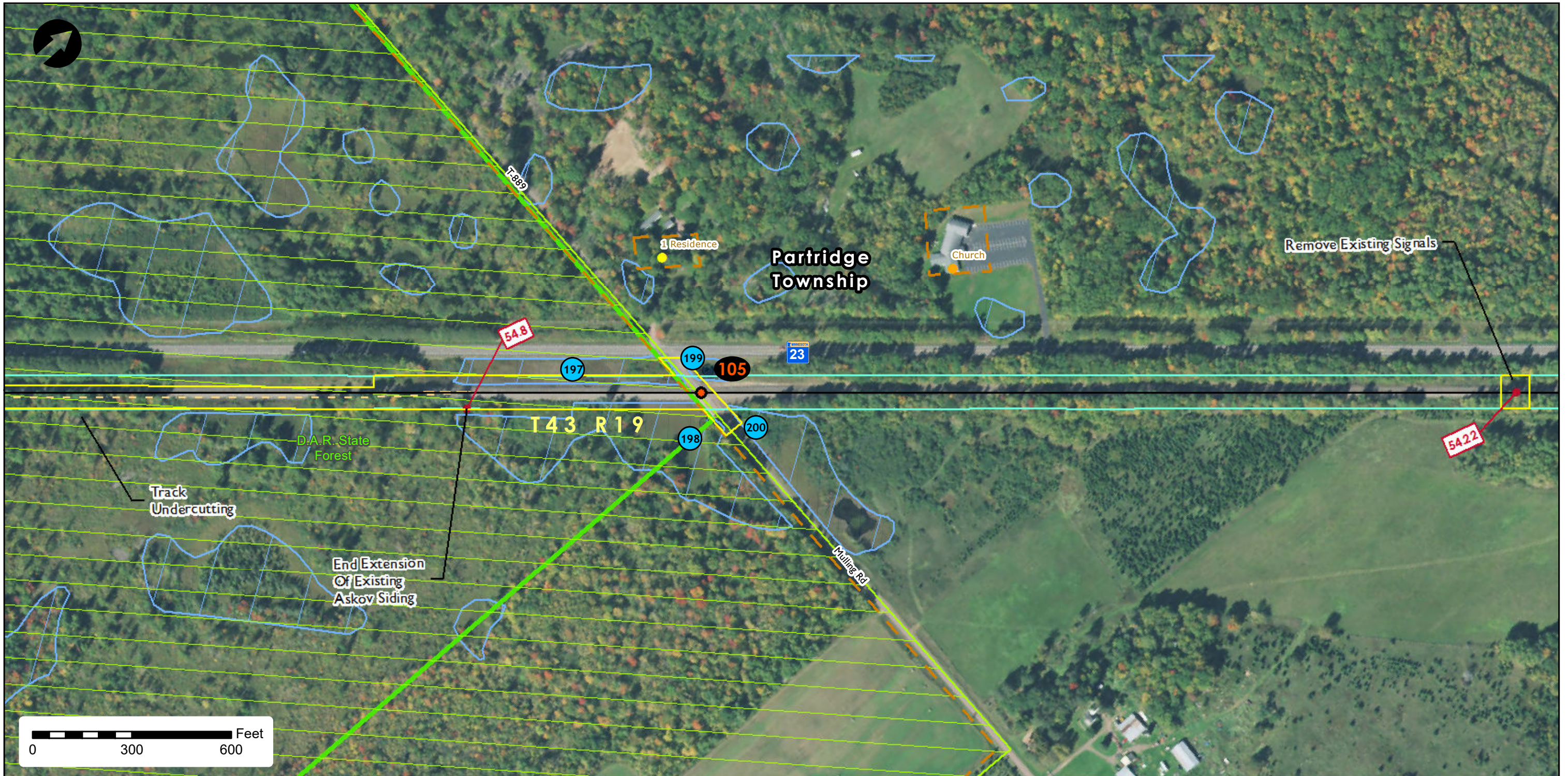


- Northern Lights Express
- New Track
- Mile Post
- ▭ Wetlands
- ▭ MN Public Waters
- Stream
- ▭ Floodway
- ▭ 100 Year Floodplain
- ▭ Construction Limits
- ▭ Railroad Right-of-Way
- ◆ Noise Reference Point
- At Grade Crossings (see At Grade Index for additional information)
- ▭ Parks (4f)
- ▭ State
- ▭ County
- ▭ City / Township Boundary

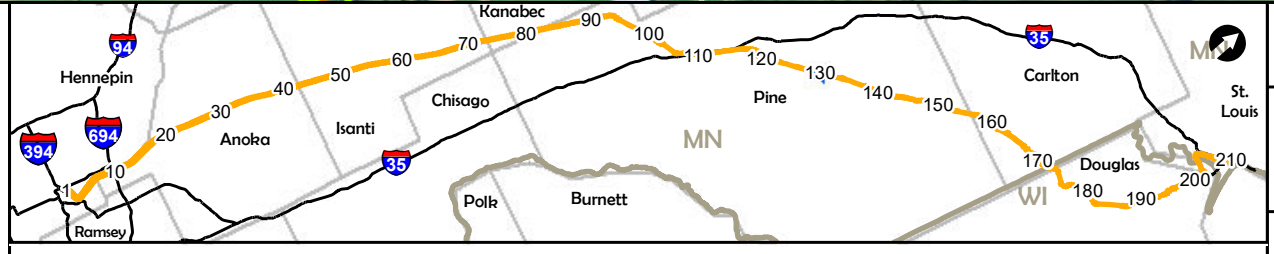


DATE:	6/7/2017
STATE:	Minnesota
COUNTY:	Isanti
Aerials: 2015 NAIP Original 11x17 L	
PAGE:	51 of 211

Path: \\mspe-gis-file\GISProj\HNTB\2439797.2\_Work\_in\_Progress\Map\_Docs\Tier2\_EA\Appendix\_DetailedMap\_11x17L\_3600K.mxd - User: jwaller



- Northern Lights Express
- New Track
- Mile Post
- Wetlands
- Impacted Wetland Number
- Construction Limits
- Railroad Right-of-Way
- Noise Reference Point
- Noise Receptor Clusters
- Noise Impacts
  - No Impact - Both Maintenance Facilities
  - Moderate Impact - Both Maintenance Facilities
- At Grade Crossings (see At Grade Index for additional information)
- Parks (4f)
- MN State Forest
- State
- County



DATE:	6/8/2017
STATE:	Minnesota
COUNTY:	Pine
Aerials: 2015 NAIP Original 11x17 L	
PAGE:	130 of 211