

PREPARED BY  
HIGHWAY PLANNING BUREAU  
IN COOPERATION WITH  
U.S. PUBLIC ROADS ADMINISTRATION

STATE OF MINNESOTA  
DEPARTMENT OF HIGHWAYS  
ROAD LIFE STUDIES  
CONSTRUCTION PROJECT LOG RECORD

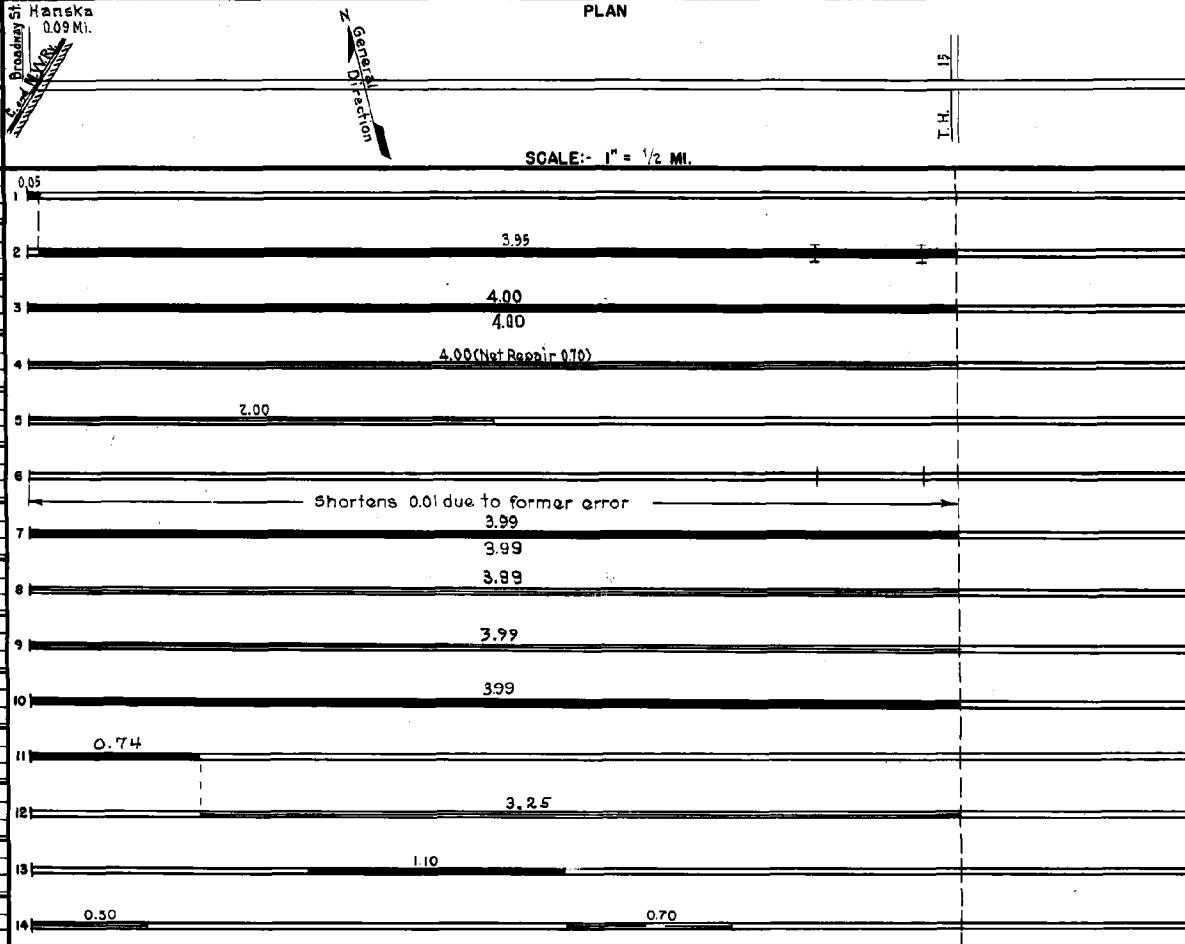
CONTROL SECTION 0808  
TRUNK HIGHWAY 257  
COUNTY Brown  
DISTRICT 7B

LIMITS: Broadway St. in Hanska - Jct. T.H. 15

to Hanska  
0.09 Mi.

PLAN

YEAR BUILT	PROJECT N <sup>o</sup>	DESCRIPTION			CODE N <sup>o</sup>
		TYPE	WIDTH	THICKNESS	
		Mixed Bit.	30'		
				No Record of Const. Added in 1949	
		Gravel	26'		
		Br. 6948 & 6949	20'		
				No Record of Const. Added in 1949	
				21 B.S. & 20 B.S.	
C		Bit Surfacing			
1950	A.F.E. 17	Bit Surf. Tr. (3.95 Mi)	24'	3/4"	MG185C-3, 41756 Gal. Agg. 1670 C.Y.
		Mixed Bit. (0.05 Mi)	24'	3/4"	added thickness
M		Spot Treat.			
1951	A.F.E. 4	Bit Surf. Repair	24'		SG34RC5-1, 7808 Gal. Agg. 151 C.Y.
		Fog Seal (4.00 Mi.)			
M					
1952	A.F.E. 4	Bit Surf. Repair	24'		SG364 RC5-2, 19534 Gal. Agg. 734 C.Y.
	A.F.E. 5	Light Seal Coat	24'		
C		Remove Br. 6948 & 6949			
1953	A.F.E. 822	Install C.M. Culvert Replacements			
C		Sand-Grav. Sub-base	27'	6-9"	
1953	0808-02	Gravel Base	27'	3"	
		Plant Mix Bit.	24'	2"	
M					
1953		Light Bit. Seal	25'		RS-2, 7044 Gal. Agg. 237 C.Y.
M					
1965	SF	Bit Surf. Repair	24'		MC-800, 37583 Gal. Agg. 1860 C.Y.
C					
1972	0808-04	Plant Mix Bit. Agg. Shoulders	2 1/2'	2 1/2"	Right & Left
M					
1977	SF	Bit. Overlay	24'	1 1/2"	Pl. Mix AG
M					
1977	SF	SEAL COAT	24'		CRS-2 & FA2 Mod
M					
1983	SF	Bit. Overlay	24'	1 1/2"	Pl. Mix 2331
M					
1983	SF	Seal Coat	24'		CRS-2 BFA-2 Mod



YEARS		TOTAL MILES	UNINCORPORATED		INCORPORATED		RURAL		URBAN	
FROM	TO		RDWY. MI.	BR. MI.	RDWY. MI.	BR. MI.	RDWY. MI.	BR. MI.	RDWY. MI.	BR. MI.
1949	1952	4.00	3.90	0.01	0.09	0.00	0.00	3.99	0.01	0.00
1953		3.99	3.90	0.00	0.09	0.00	0.00	3.99	0.00	0.00

REMARKS: Layout is to scale as of 1949

