

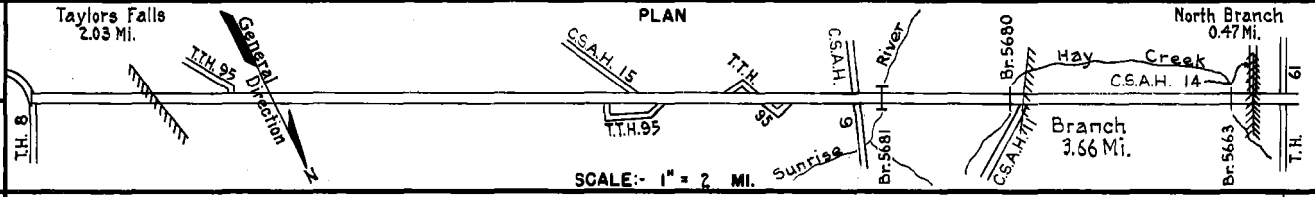
PREPARED BY  
HIGHWAY PLANNING SURVEY  
IN COOPERATION WITH  
U. S. PUBLIC ROADS ADMINISTRATION

STATE OF MINNESOTA  
DEPARTMENT OF HIGHWAYS  
ROAD LIFE STUDIES  
CONSTRUCTION PROJECT LOG RECORD

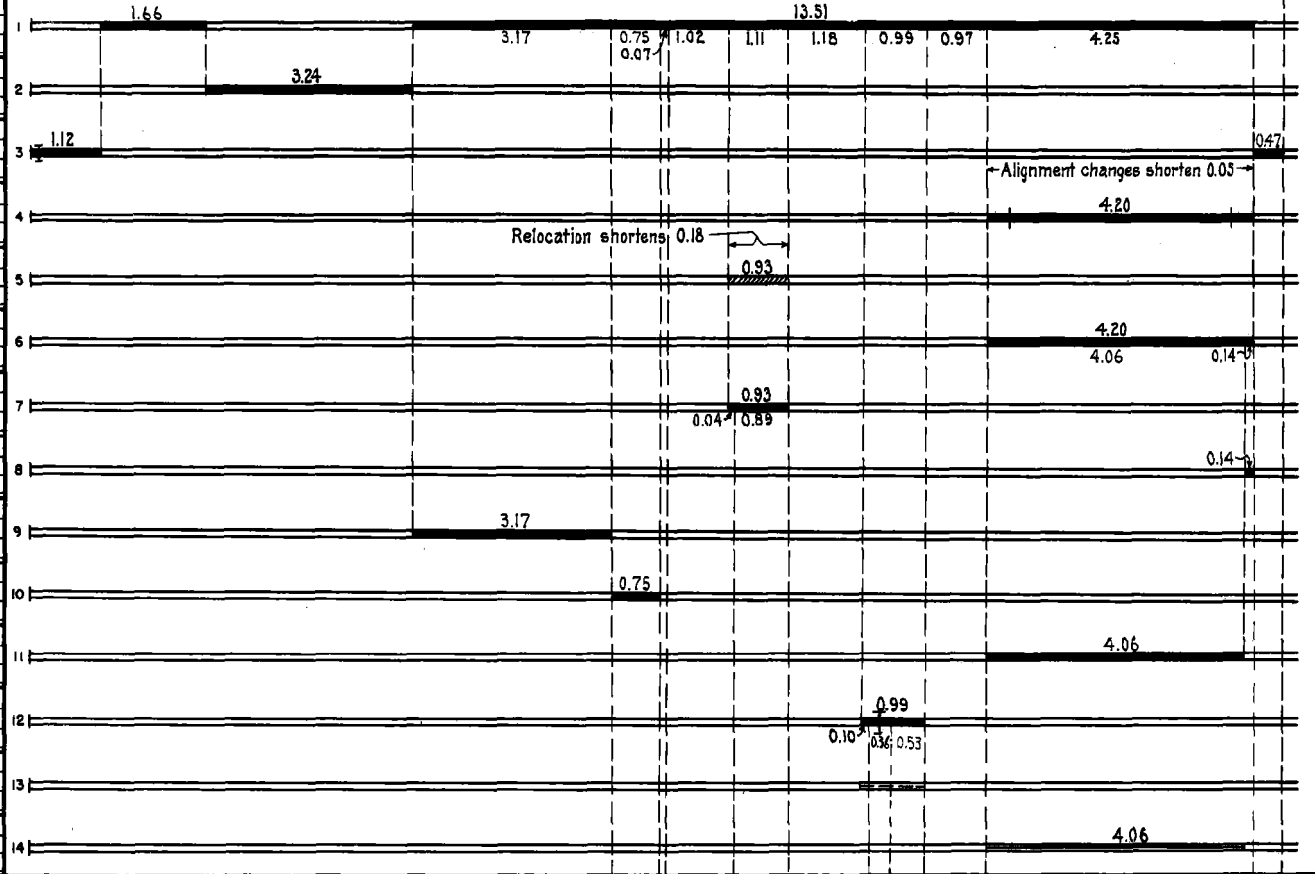
CONTROL SECTION 1306  
TRUNK HIGHWAY 95  
COUNTY Chicago  
DISTRICT 9A

LIMITS: Jct. T.H.8 in Taylors Falls - Jct. T.H.61 in North Branch

Ref. Pts. 74+00.922 - 55+00.060



YEAR BUILT	PROJECT N <sup>o</sup>	DESCRIPTION			CODE N <sup>o</sup>
		TYPE	WIDTH	THICKNESS	
		Gravel	32' 2 3/4"	No Record of Constr.	
		Br. N <sup>o</sup> 1176	18'	Added in 1934.	
		Grading	26'	Co. Job N <sup>o</sup> 2901,	
1930		Gravel	18' 3 1/2"	1200 C.Y./Mile.	
				Added in 1934.	
				Maint. Dept.	
1934		Oil Tr. Gravel	25' 1 1/2"	5300-6500 Gal./Mile	
		Br. N <sup>o</sup> 1825 (2)	40'	D.P.G.-U.P.	
1936	95-132-25-1B	Grading	32'		
		Br. 5680 & 5663		W1010T & W1010D.	
1936	95-132-25-2	Grading	32'		
	(i)				
1936	95-132-25-1B	Gravel	20' 1"	400 C.Y./Mile	
				Maint. Dept.	
	(ii)				
1936	95-132-25-2	Gravel	32' 3"		
				Maint. Dept.	
1937	A.F.E. 30	Mixed Bit.	20' 1 1/4"		
				Maint. Dept.	
		Grading	24'		
1938	A.F.E. 37 & 38	Gravel	24' 2"		
				Maint. Dept.	
	C				
1940	A.F.E. 12	Mixed Bit.	24' 1 1/2"		
				Maint. Dept.	
	C				
1941	1306-02	Grading	40'		
		Gravel	40'	800 C.Y./Mi.	
		Br. 5681	30'	50' B.S.	
				Seed supplied by	
1941	A.F.E. 10	Seeding		R.S.D. (S.P. 1306-01)	
				Maint. Dept.	
	M				
1941	A.F.E. 15	Bit Seal Coat	26'	RT-10, 3035 Gal./Mi.	
				Sand, 87 C.Y./Mi.	
				Maint. Dept.	



YEARS		TOTAL MILES	UNINCORPORATED		INCORPORATED		RURAL		URBAN	
FROM	TO		RDWY. MI.	BR. MI.	RDWY. MI.	BR. MI.	RDWY. MI.	BR. MI.	RDWY. MI.	BR. MI.
1934	1935	20.00	17.90	0.01	2.09	0.00	19.99	0.01	0.00	0.00
1936	1948	9.77	17.67	0.01	2.09	0.00	19.76	0.01	0.00	0.00
1949	1960	9.84	17.33	0.01	2.50	0.00	19.83	0.01	0.00	0.00
1961		9.84	15.67	0.01	6.16	0.00	19.83	0.01	0.00	0.00

REMARKS: Layout is to scale as of 1936. Plan revised for 1949 relocation.

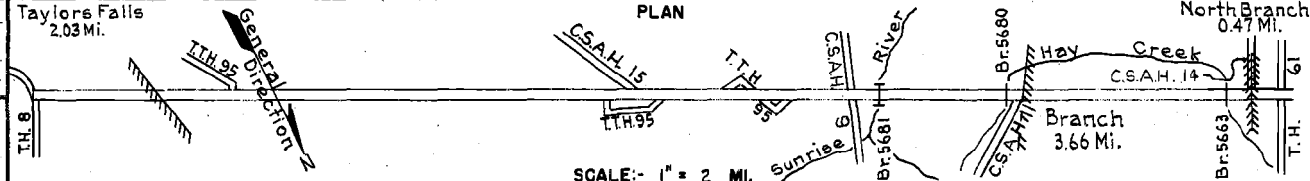
(i) This work not done under these project numbers but lies within the limits of these projects  
(ii) No Record of Constr. of Bridge

PREPARED BY  
HIGHWAY PLANNING SURVEY  
IN COOPERATION WITH  
U.S. PUBLIC ROADS ADMINISTRATION

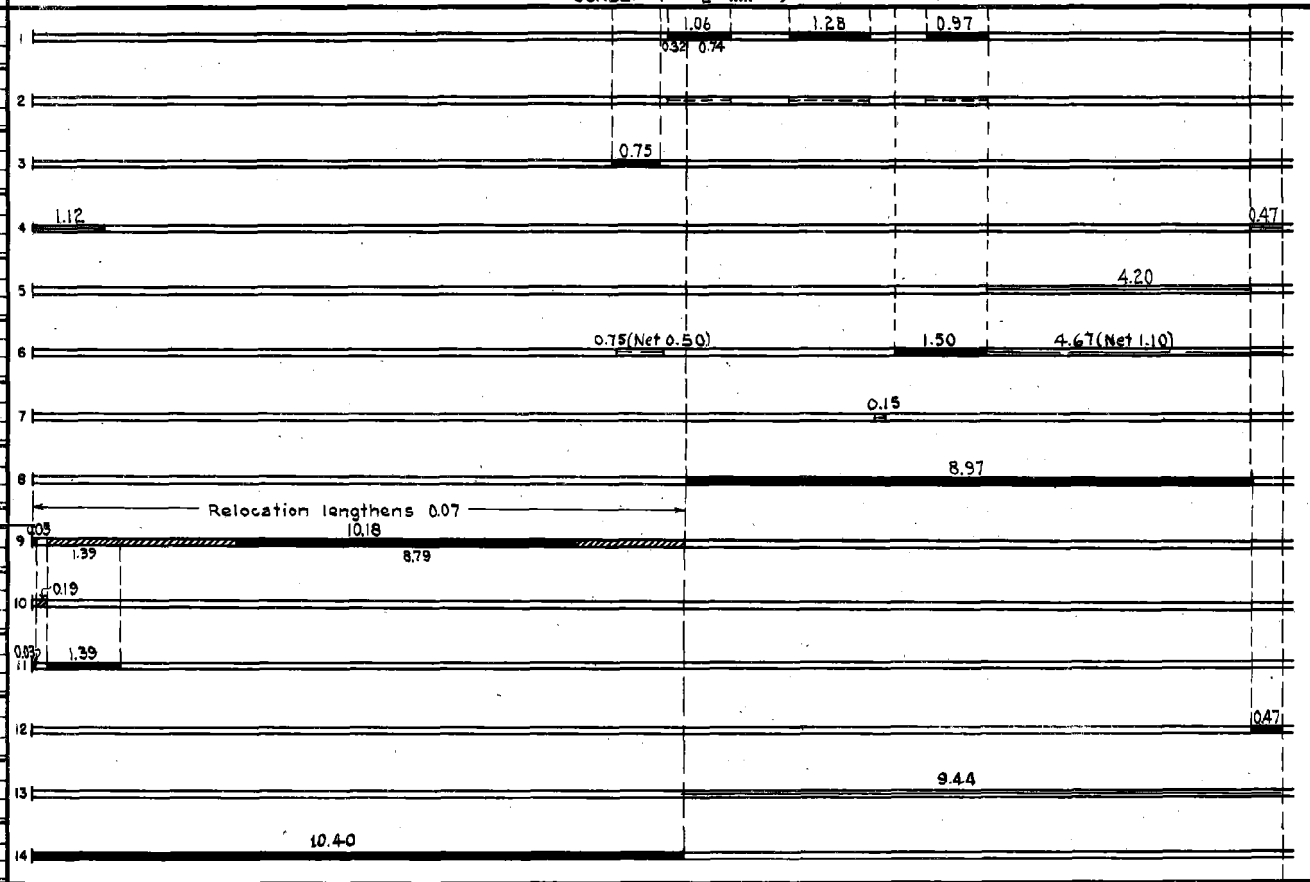
STATE OF MINNESOTA  
DEPARTMENT OF HIGHWAYS  
ROAD LIFE STUDIES  
CONSTRUCTION PROJECT LOG RECORD

CONTROL SECTION 1306  
TRUNK HIGHWAY 95  
COUNTY Chicago  
DISTRICT 9A

LIMITS: Jct. T.H. 8 in Taylors Falls - Jct. T.H. 61 in No. Branch.  
Ref. Pts. 74+00.922 - 55+00.060



YEAR BUILT	PROJECT N <sup>o</sup>	DESCRIPTION			CODE N <sup>o</sup>
		TYPE	WIDTH	THICKNESS	
C	1306-03	Grading Stab. Gravel	32 1/2 35		
C	A.F.E. 7	Seeding			Seed supplied by R.S.D. (S.P. 1306-05) Maint. Dept.
C	A.F.E. 4	Bit. Resurfacing Mixed Bit.	22 added	1"	RT-6, 12903 Gal./Mi. Grav. 509 C.Y./Mi. Maint. Div.
M	A.F.E. 4	Bit. Surf. Repair	22 1/2		RT-6, 10318 Gal./Mi. Grav. 469 C.Y./Mi. Maint. Div.
M	A.F.E. 5	Bit. Fog Seal	24		RT-10, 1698 Gal./Mi. Sand. 83 C.Y./Mi. Maint. Div.
C&M	A.F.E. 4	Spot Treat. Bit. Surf. Repair Mixed Bit. (LSQM)	23 1/2 28	1"	RT-6, 38266 Gal. Agg. 1444 C.Y.
M	A.F.E. 37	Subqr. Correction Gravel Lift	36		1946 C.Y.
C	1306-08	Bit. Stab. Base Plant Mix. Bit.	30 24	0-9" 1 1/2"	
C	1306-09	Grading Stab. Gravel	32 1/2 28	2"	1200 C.Y./Mi.
		Mixed Bit.	42		No Record of Constr. Taken over from village in 1949.
C	A.F.E. 41	Bit. Surfacing Mixed Bit. (Mixed Prime 112 Mi.)	30 3/4	1-1 1/2"	MC-9, 13635 Gal. Agg. 120 C.Y.
C	A.F.E. 31 1306-10 (1)	Stab. Gravel Base Bit. Surfacing Mixed Bit.	33 1/2 33 1/2	2" 3"	RT-6, 20603 Gal. Agg. 2322 C.Y.
M	A.F.E. 4 1970	Light Bit. Seal			RT-8, 10907 Gal. Agg. 419 C.Y.
C	1306-11	Stab. Gravel Base Plant Mix. Bit.	30 1/2 24 1/2	4-9" 1 1/2-2"	



YEARS FROM	TOTAL TO	UNINCORPORATED		INCORPORATED		RURAL		URBAN	
		RDWY. MI.	BR. MI.	RDWY. MI.	BR. MI.	RDWY. MI.	BR. MI.	RDWY. MI.	BR. MI.

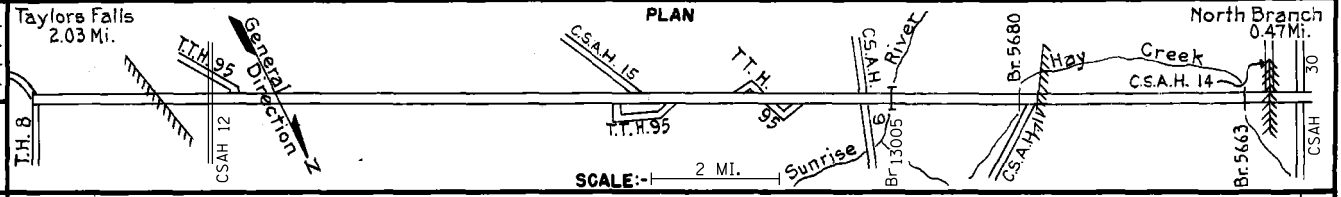
REMARKS: See Sheet No. 1  
(1) 0.47 mi. curb & gutter constructed under S.P. 1306-10 (Spec. Agree. C-549)

PREPARED BY  
HIGHWAY PLANNING SURVEY  
IN COOPERATION WITH  
U. S. PUBLIC ROADS ADMINISTRATION

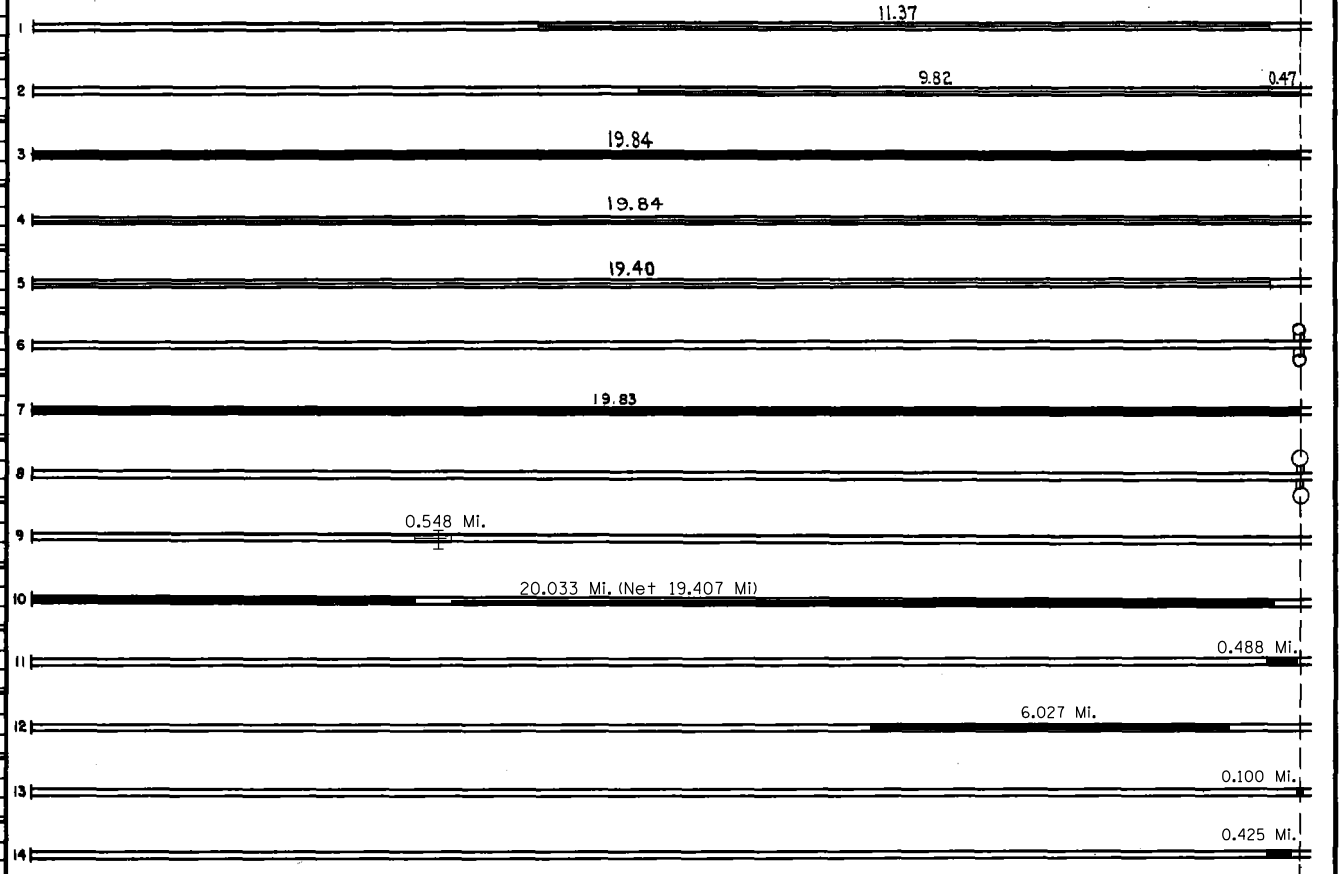
STATE OF MINNESOTA  
DEPARTMENT OF HIGHWAYS  
ROAD LIFE STUDIES  
CONSTRUCTION PROJECT LOG RECORD

CONTROL SECTION 1306  
TRUNK HIGHWAY 95  
COUNTY Chisago  
DISTRICT Metro

LIMITS: E Jct USTH 8 - Jct of Csoh 30 Forest Blvd  
Ref. Pts. 74+00.922 - 55+00.060



YEAR BUILT	PROJECT N°	DESCRIPTION			CODE N°
		TYPE	WIDTH	THICKNESS	
M	1952 A.F.E. 5	Light Bit. Seal	24'		RCS-2, 1687 Gal. Agg. 490 C.Y.
M	1954 A.F.E. 605	Light Bit. Seal (0.82 Mi)			RG 2 & RT-6, 24890 Gal.
	1954 A.F.E. 604	Bit. Surf. Repair (0.47 Mi)			Agg. 520 C.Y. & 707 Tons
C	1956 1306-12	Plant Mix Bit.	24' 2-5" added		
M	1958 A.F.E. 605	Bit. Seal Coat	25'		RS-2, 36086 Gal. Agg. 1352 C.Y.
M	1964 C	Light Bit. Seal	24'		RS-2K, 34667 Gal. Agg. 1390 C.Y.
C	1974 -20	TRAFFIC SIGNALS REVISIONS			At Jct. 95 Co. Rd. 30
C	1979 1306-28	Bit. Resurfacing Bit. Shoulders	24' 3" 6' 1 1/2"		
C	1984 1306-29	Traffic Control Signal System			At Jct. Co. Rd. 30
C	1994 1306-30	Grading Surfacing Agg. Base	24' 4" 36' 6"		BR. Const. #13005 Type 31WEA50000Y Type 31BIB50000Y
C	1996 1306-33	Bit. Milling Bit. Overlay	24' 1 1/2" 24' Var.		Spec. 2341
C	2005 1306-36	Bit. Milling Bit. Overlay	Var. 2" Var. 2"		Spec. 2360
C	2009 1306-35	Milling Bit. Overlay	24' 2" 24' 1 1/2"		Spec. 2360
C	2012 1306-44	Grading Bit. Surfacing Bit. Mill & Overlay	24' 4"		Spec. 2360
C	2012 1306-47	Milling Bit. Overlay	24' 4"		Spec. 2360



YEARS FROM	TOTAL MILES TO	UNINCORPORATED		INCORPORATED		RURAL		URBAN	
		RDWY. MI.	BR. MI.	RDWY. MI.	BR. MI.	RDWY. MI.	BR. MI.	RDWY. MI.	BR. MI.

REMARKS: See Sheet No. 1

