

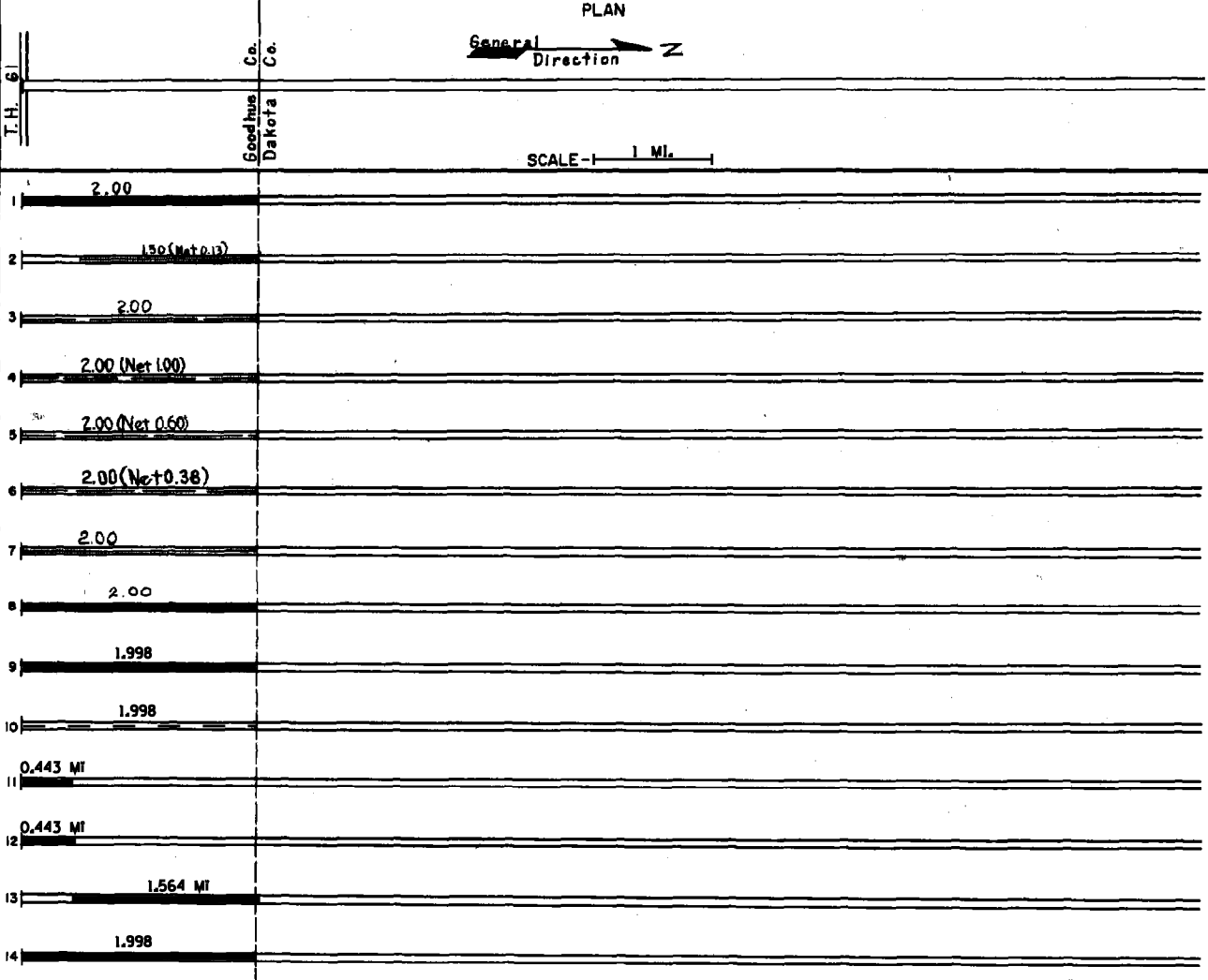
PREPARED BY  
TRAFFIC AND PLANNING DIVISION  
IN COOPERATION WITH  
U.S. DEPARTMENT OF COMMERCE  
BUREAU OF PUBLIC ROADS

STATE OF MINNESOTA  
DEPARTMENT OF HIGHWAYS  
ROAD LIFE STUDIES  
CONSTRUCTION PROJECT LOG RECORD

CONTROL SECTION 2518  
TRUNK HIGHWAY 318  
COUNTY Goodhue  
DISTRICT Metro

LIMITS: Jct. T.H. 61 - N. Co. Line  
Ref. Pt. 000+00.000 - 002+00.000

YEAR BUILT	PROJECT NO	DESCRIPTION			
		TYPE	WIDTH	THICKNESS	REMARKS
		Mixed Bit	24'		No Record of Constr. Added to system in 1953
M 1959	A.F.E. 604	Spot Treat Bit Surf. Repair	24'		138 Tons Plant Mix
M 1960		Spot Treat Bit Surf. Repair			Plant Mix 64 Tons
M 1961		Spot Treat Bit Surf. Repair	24'		MC-3,9065 Gal. Agg. 818 Tons
M 1962		Spot Treat Bit Surf. Repair	24'		MC-3,6212 Gal. Agg. 507 Tons
M 1964	SF	Spot Treat Bit Surf. Repair	25'		Road Mix 325 Tons
M 1970	SF	Bit Road Mix	24'		BA2-1676 Gal. Agg. 836 Tons
C 1976	2518-07	Pl. Mix Bit Surface & Bit Shoulder	24' 1 1/2"	3"	
C 1987	2518-08	Bit. Overlay	28'	1 1/2"	Spec. 2331 Spec. 2341
C 1991	M4483	Major Crack Repair			
C 1996	2514-89	Grading Bit Surfacing Agg. Base	24' 40'	9 1/2" 6"	Spec. 2331, 2347 Class 6
C 1997	2514-99	Grading Bit Surfacing Agg. Base	46' 28' 42'	5" 6"	Spec. 2331 Class 5
2004	1926-17	Milling & Bit Overlay Grading Bit Surfacing	24' 28' 50' 24'	1 1/2" 3" 24' 6.5"	Spec. 2360
S 2009	2518-10	Microsurfacing	var.	1/2"	



YEARS		TOTAL MILES	UNINCORPORATED		INCORPORATED		RURAL		URBAN	
FROM	TO		RDWY. MI.	BR. MI.	RDWY. MI.	BR. MI.	RDWY. MI.	BR. MI.	RDWY. MI.	BR. MI.
1959		2.00	2.00	0.00	0.00	0.00	0.00	2.00	0.00	0.00

REMARKS: Layout is to scale as of 1959.