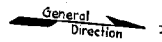


PREPARED BY
HIGHWAY PLANNING SURVEY
IN COOPERATION WITH
U.S. PUBLIC ROADS ADMINISTRATION

STATE OF MINNESOTA
DEPARTMENT OF HIGHWAYS
ROAD LIFE STUDIES
CONSTRUCTION PROJECT LOG RECORD

CONTROL SECTION 3415
TRUNK HIGHWAY 104
COUNTY Kandiyohi
DISTRICT 8A

LIMITS: Jct. T.H. 12 - E. Jct. T.H. 9 in Sunburg

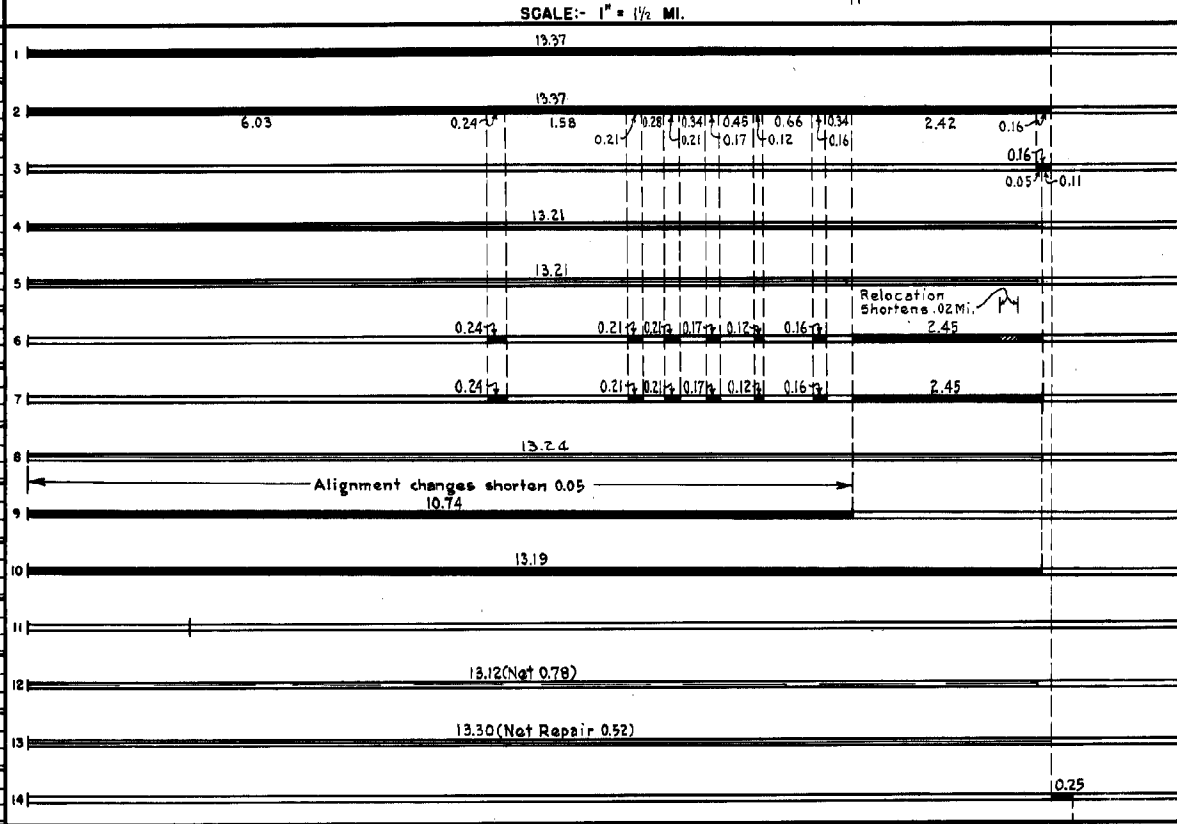


PLAN

Sunburg
0.79 Mi.

YEAR BUILT	PROJECT N ^o	DESCRIPTION			CODE N ^o
		TYPE	WIDTH	THICKNESS	
					No Record of Constr.
		Gravel	22'	1"	Added in 1934.
				(1)	
1935	104-143-21	Gravel	18'	2"	500 C.Y./Mile. Relief Labor.
	(2)				
1936	104-143-21	Oil Tr. Gravel	24'	1"	Maint. Dept.
M	1940 A.F.E. 11	Regravelling			340 C.Y./Mile. Maint. Dept.
M	1943 A.F.E. 6	Grav. Resurface			304 C.Y./Mi. Maint. Dept.
C	1944 3415-02	Grading	26'		
C	1944 A.F.E. 24	Grav. Surface			704 C.Y./Mi. Maint. Div.
M	1946 A.F.E. 6	Grav. Resurfacing	22'		532.7 C.Y.
C	1950 3415-04	Grading	28'		
(3)		Gravel	24'	2 1/2"	1200 C.Y./Mi.
C	1951 3415-05	Gravel Base	25'	6"	
(3)		Mixed Bit.	23'	1"	
C	1952 3415-06	C.M. Pipe Arch Culv.			154" x 56'
M	1953 A.F.E. 604	Spot Treat. Bit. Surf. Repair	24'		MG3, 6729 Gal. Agg. 602 Tons
M	A.F.E. 820	Spot Treat.			MG3 & RG2, 27944 Gal.
1954	A.F.E. 604	Bit. Surf. Repair	24'		Agg. 483 Tons & 1770 CY
	A.F.E. 605	Light Bit. Seal (13.30 Mi)	24'		Spot Base Repair
C	1956 *	Grading	40'		* Built as connection
		Gravel	36'	2"	under S.P. 3406-04
	A.F.E. 823	Mixed Bit.	24'		

I-12
Ry.
G.N.



YEARS		TOTAL MILES	UNINCORPORATED		INCORPORATED		RURAL		URBAN	
FROM	TO		RDWY. MI.	BR. MI.	RDWY. MI.	BR. MI.	RDWY. MI.	BR. MI.	RDWY. MI.	BR. MI.
1934	1943	13.37	13.37	0.00	0.00	13.37	0.00	0.00	0.00	
1944	1949	13.35	13.35	0.00	0.00	13.35	0.00	0.00	0.00	
1950	1951	13.30	13.30	0.00	0.00	13.30	0.00	0.00	0.00	
1951	1955	13.30	12.76	0.00	0.54	13.30	0.00	0.00	0.00	
1955		13.55	12.76	0.00	0.79	13.55	0.00	0.00	0.00	

REMARKS: Layout is to scale as of 1934.

(1) Accumulated thickness.

(2) This work net done under this project number but lies within the limits of this project.

(3) Contract not final but work substantially complete.

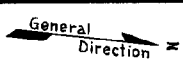
PREPARED BY
HIGHWAY PLANNING SURVEY
IN COOPERATION WITH
U. S. PUBLIC ROADS ADMINISTRATION

STATE OF MINNESOTA
DEPARTMENT OF HIGHWAYS
ROAD LIFE STUDIES
CONSTRUCTION PROJECT LOG RECORD

CONTROL SECTION 3415
TRUNK HIGHWAY 104
COUNTY Kandiyohi
DISTRICT 8A

LIMITS: Jct. T.H. 12 - E. Jct. T.H. 9 in Sunburg

Ref. Pt. 000+00.000 - 013+00.583



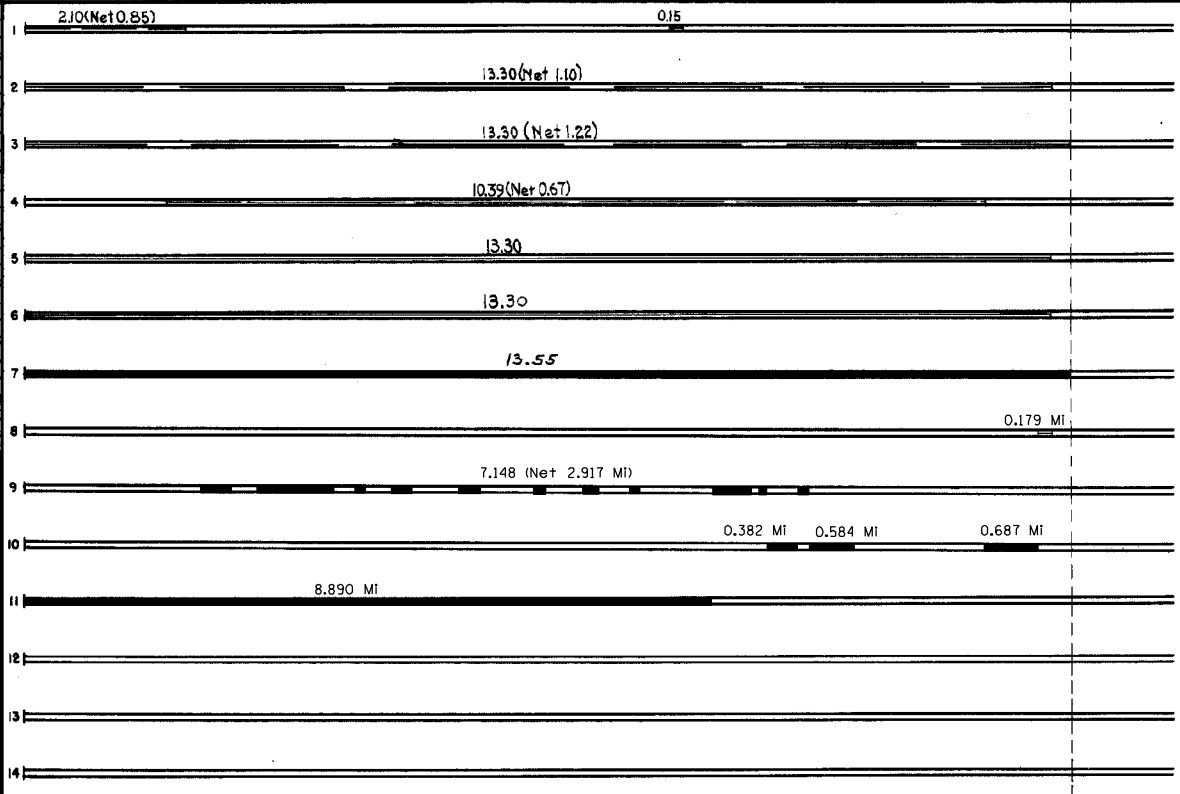
PLAN

Sunburg 0.79 Mi.

YEAR BUILT	PROJECT N ^o	DESCRIPTION				CODE N ^o
		TYPE	WIDTH	THICKNESS	REMARKS	
M 1956	A.F.E. 604	Spot Treat Bit. Surf. Repair	24'		MC-3, 7976 Gal. Agg. 658 Tons	1
M 1957	A.F.E. 604	Spot Treat Bit. Surf. Repair	24'		MC-3, 7231 Gal. Agg. 693 Tons	2
M 1958	A.F.E. 604	Spot Treat Bit. Surf. Repair	24'		MC-3, 8801 Gal. Agg. 742 Tons	3
M 1961		Spot Treat Bit. Surf. Repair	22'		Plant Mix 457 Tons MC-3, 425 Gal. for tack	4
M 1962		Bit. Resurfacing	24'	1 1/2"	MC-2, 134693 Gal. Agg. 10714 Tons	5
M 1964	C	Light Bit Seal	25'		RS-2K, 29416 Gal. Agg. 1055 C.Y.	6
C 1975	3415-08	Bit. Resurf.	24'	1 1/2" 3"	Bit. No. 111 T.H. 12 1 Jar. T.H. 9	7
M 1990	SF	Grading Bit. Shoulder Agg. Base	8' 5' 5'	3" 12"	On Shoulder Spec. 2331 Class 5	8
M 1994	M94148	Bit. Overlay	24'	1 1/2"	Spec. 2341	9
M 1999	M99179	Bit. Overlay Gravel Shoulder	24' 5'	1 1/2" 1 1/2"	Spec. 2350 Class 1	10
M 2000	3415-14	Bit. Overlay Gravel Surfacing	24' 2'	1 1/2" 2"	Spec. 2350 Class 1	11
						12
						13
						14

T.H. 12 Ry.
G.N.

SCALE: - 1/2 MI.



YEARS FROM TO		TOTAL MILES	UNINCORPORATED		INCORPORATED		RURAL		URBAN	
FROM	TO	MILES	RDWY. MI.	BR. MI.	RDWY. MI.	BR. MI.	RDWY. MI.	BR. MI.	RDWY. MI.	BR. MI.

REMARKS: See Sheet No. 1