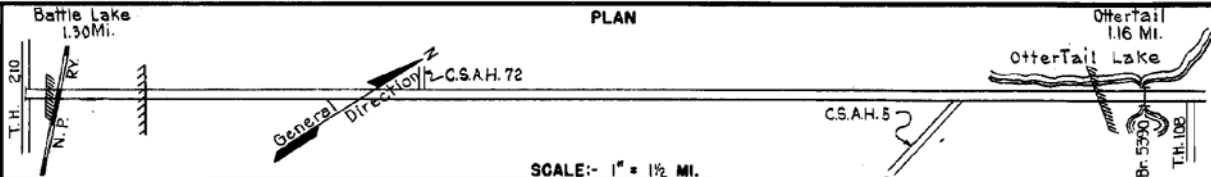


PREPARED BY
HIGHWAY PLANNING SURVEY
IN COOPERATION WITH
U.S. PUBLIC ROADS ADMINISTRATION

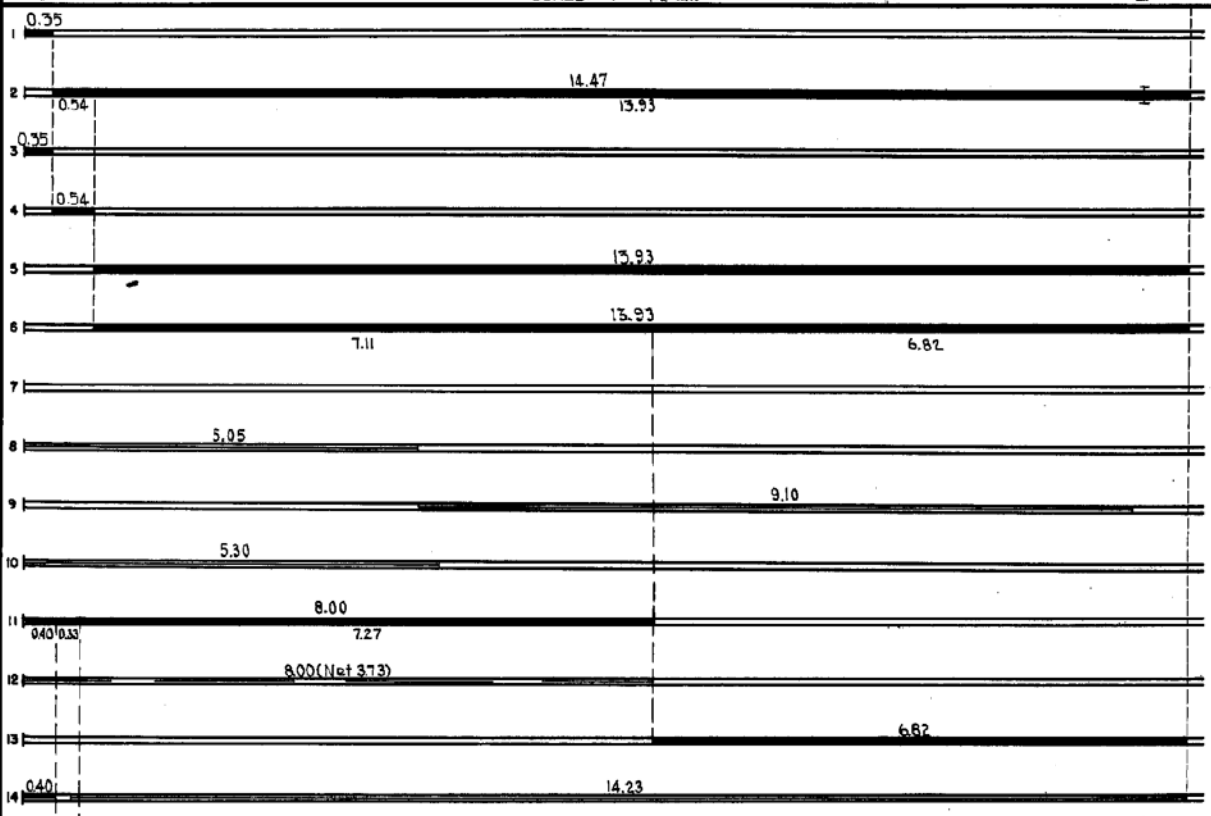
STATE OF MINNESOTA
DEPARTMENT OF HIGHWAYS
ROAD LIFE STUDIES
CONSTRUCTION PROJECT LOG RECORD

CONTROL SECTION 5620
TRUNK HIGHWAY 75
COUNTY Otter Tail
DISTRICT 4A

LIMITS: Jct. T.H. 210-S. Jct. T.H. 108 in Ottertail



YEAR BUILT	PROJECT N°	DESCRIPTION			CODE N°
		TYPE	WIDTH	THICK-NESS	
		Gravel	30	1 1/2"	No Record of Constr. Added in 1934.
1934	75-180-21-1	Grading Br. 5390	30	27	30 B.S.
1934		Tar Tr. Gravel	24'	1"	21212 Gal./Mile. Maint. Dept.
	(1)				
1934	75-180-21-1	Tar Tr. Gravel	30	1"	21212 Gal./Mile. Maint. Dept.
	(1)				
1936	75-180-21-1	Gravel	26	1 3/4"	854 C.Y./Mile. Maint. Dept.
1937	A.F.E. 14	Mixed Bit	24'	1 1/4"	Maint. Dept.
1939	E620-01	Historical Marker			At Balmeral Beach
M	1940	A.F.E. 8	Bit. Seal Coat		Bit. 3462 Gal./Mi. Sand 90 C.Y./Mi. Maint. Dept.
M	1941	A.F.E. 18	Bit. Seal Coat		RC-3, 4248 Gal./Mi. Agg. 120 C.Y./Mi. Maint. Dept.
M	1944	A.F.E. 5	Bit. Seal Coat	24'	RC-3, 2887 Gal./Mi. Sand 120 C.Y./Mi. Maint. Div.
C	1945	A.F.E. 24	Spot Grav. Lifts Bit Resurf & Fog Seal	1"	SC-3b, 76271 Gal. Agg. 4121 C.Y.
M	1949	A.F.E. 4	Spot Treat. Bit Surf. Repair	24'	MC-3, 21016 Gal. Agg. 1883 Tons
C	1949	A.F.E. 16	Bit. Resurfacing Mixed Bit.	24'	MC-3, 60489 Gal. Agg. 5033 Tons
M	1951	A.F.E. 4	Light Bit. Seal	24'	RCS-1, 21718 Gal. Agg. 541 C.Y.



YEARS		TOTAL MILES	UNINCORPORATED		INCORPORATED		RURAL		URBAN	
FROM	TO		RDWY. MI.	BR. MI.	RDWY. MI.	BR. MI.	RDWY. MI.	BR. MI.	RDWY. MI.	BR. MI.
1934	1950	14.82	13.02	0.00	1.79	0.01	14.81	0.01	0.00	0.00
1961		14.82	12.36	0.00	2.45	0.01	14.81	0.01	0.00	0.00

REMARKS: Layout is to scale as of 1934.

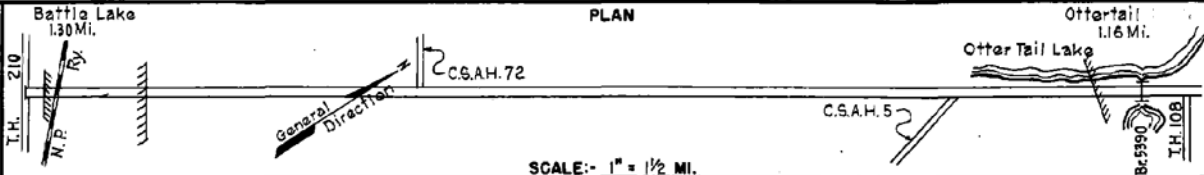
(1) This work not done under this project number but lies within the limits of this project.

PREPARED BY
HIGHWAY PLANNING SURVEY
IN COOPERATION WITH
U.S. PUBLIC ROADS ADMINISTRATION

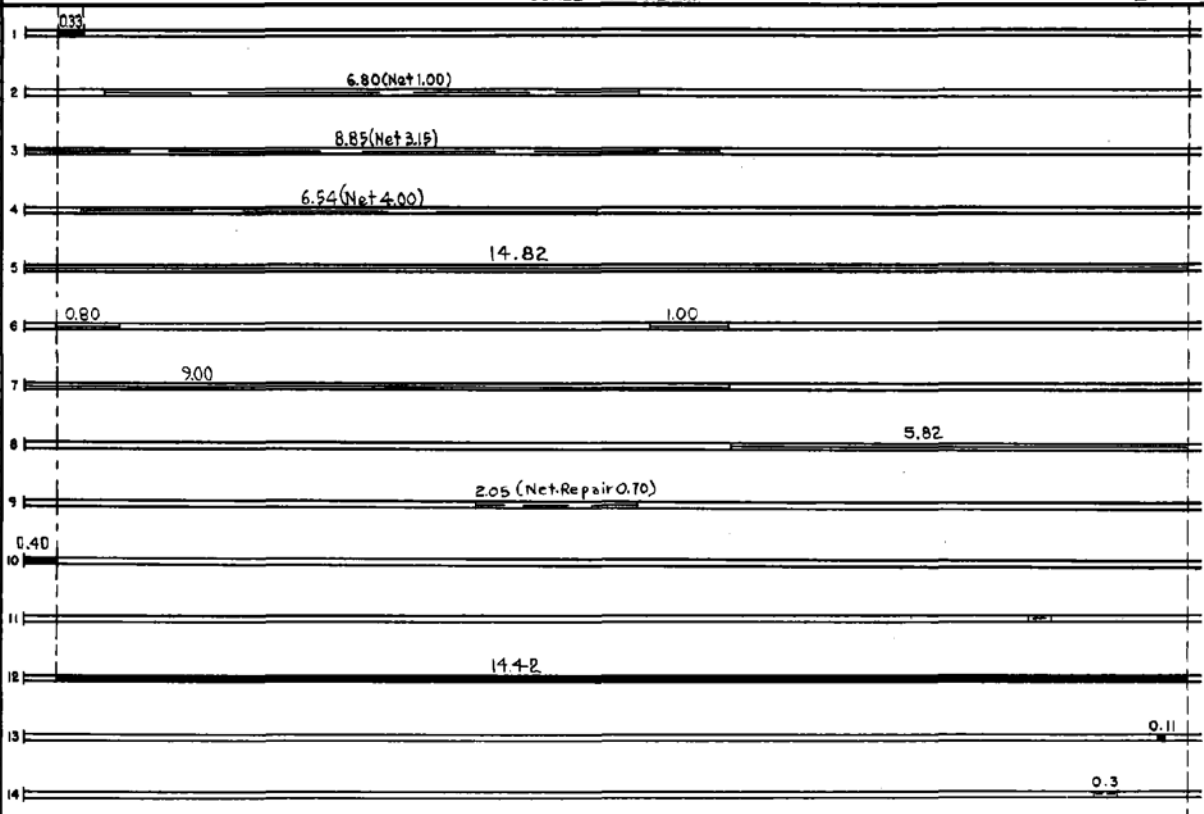
STATE OF MINNESOTA
DEPARTMENT OF HIGHWAYS
ROAD LIFE STUDIES
CONSTRUCTION PROJECT LOG RECORD

CONTROL SECTION 5620
TRUNK HIGHWAY 78
COUNTY Otter Tail
DISTRICT 4A

LIMITS: Jct. T.H. 210-S. Jct. T.H. 108 in Ottertail



YEAR BUILT	PROJECT N#	DESCRIPTION			CODE N#
		TYPE	WIDTH	THICKNESS	
C	5620-04	Gravel Base	16'74"	3"	
1953		Plant Mix Bit	36'74"	3"	
M	A.F.E. 604	Spot Treat			MC-3, 10454 Gal.
1954		Bit. Surf. Repair	24'		Agg. 706 Tons
M	A.F.E. 604	Spot Treat			MC-3, 29624 Gal.
1956		Bit. Surf. Repair	24'		Agg. 2234 Tons
M	A.F.E. 604	Spot Treat			MC-3, 34666 Gal.
1957		Bit. Surf. Repair	24'		Agg. 2798 Tons
M	A.F.E. 605	Bit Seal Coat	25'		RS-2, 11030 Gal.
1958					Agg. 385 C.Y.
M		Light Bit. Seal	24'		RC-3, 3047 Gal.
1960					Agg. 151 C.Y.
M		Light Bit. Seal	25'		RS-2, 16719 Gal.
1962					Agg. 525 C.Y.
M	C	Light Bit. Seal	25'		RS-2K, 9575 Gal.
1964					Agg. 348 C.Y.
M	SF	Spot Treat	24'	1"	MC-250 Tack 500 Gal.
1965		Bit. Surf. Repair			Bit. Mix. 504 Tons
C	5620-07	Grading rt< of rdwy imp			
1967		Gravel & Bit. Base			
		Plant Mix Bit	24'73"	3"	
C	5620-10	Rest Area			
1970					
C	5620-13	Pl. Mix Bit. Resurf.	22'71"	1 1/2"	
1970					
M	SF	Bit. Overlay	24'	1 1/2"	142 Ton Pl. Mix
1983					
M	SF	Spal Bit. Overlay	24'	1 3/4"	Sp. 2331 490 Tons
1984					



YEARS FROM	TO	TOTAL MILES	UNINCORPORATED		INCORPORATED		RURAL		URBAN	
			RDWY. MI.	BR. MI.	RDWY. MI.	BR. MI.	RDWY. MI.	BR. MI.	RDWY. MI.	BR. MI.

REMARKS: See Sheet No. 1

