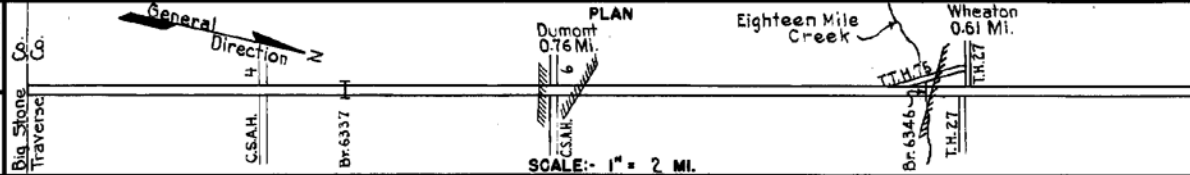


PREPARED BY  
HIGHWAY PLANNING SURVEY  
IN COOPERATION WITH  
U. S. PUBLIC ROADS ADMINISTRATION

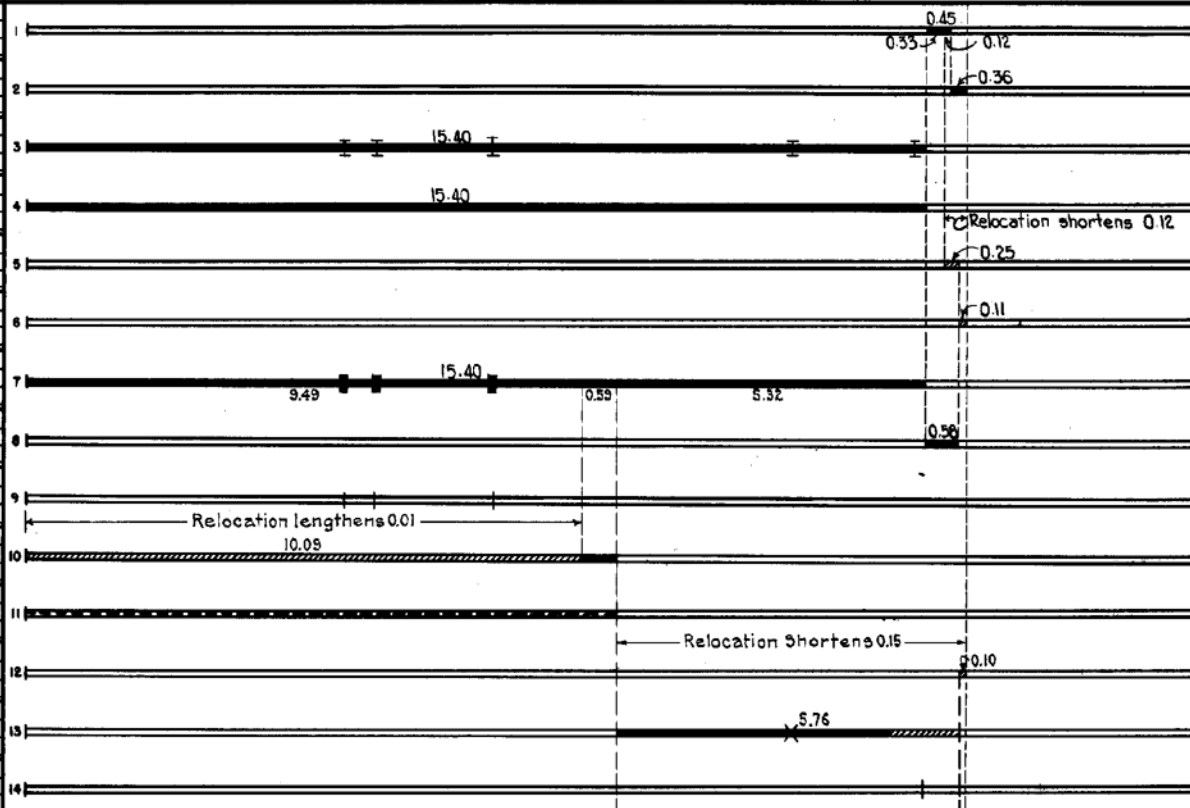
STATE OF MINNESOTA  
DEPARTMENT OF HIGHWAYS  
ROAD LIFE STUDIES  
CONSTRUCTION PROJECT LOG RECORD

CONTROL SECTION 7805  
TRUNK HIGHWAY 75  
COUNTY Traverse  
DISTRICT 4B

LIMITS: S. Co. Line - N. Jct. T.H. 27 in Wheaton.



YEAR BUILT	PROJECT N°	DESCRIPTION			CODE N°
		TYPE	WIDTH	THICKNESS	
		Gravel			No Record of Constr.
		Gravel			No Record of Constr.
1920	75-6-14	Grading Br. 2250, 2248, 3340, 3339 & 3338	24' 20'		14' B.S., 12' B.S., 16' C.S. 30' C.D.G. & 14' C.S.
1921	75-6-14	Gravel	18'	2'	
		Gravel			No Record of Constr. City St. taken over in 1925.
1925	75-6-20N	Asphalt	NW		City Construction. Taken over in 1925. Concrete Base.
	(1)				Maint. Dept.
1932	75-6-14	Oil Tr. Gravel Widen Br. 2250, 2248, 3340	22' 24'	1"	10,300 Gal./Mile. Widened to 24'
1932		Oil Tr. Gravel	22'		10,300 Gal./Mile. Maint. Dept.
1939	7805-04	Br. 6337 Mono. Culv. Br. 8505			WI28D-W186-W105 on New Line.
C	1940	Grading (2) Gravel	36' 36'	1 1/4"	800 C.Y./Mile.
C	1940	7805-07 A.F.E. 8			Seeding Maint. Dept.
C	1941	7805-15	46' 46'	8"	Grading Stab. Gravel Base
C	1941	7805-01	36'		Grading Stab. Gravel Bridge Removal
C	1941	7805-03			Br. 6346 WI08TX50.



YEARS FROM	TO	TOTAL MILES	UNINCORPORATED		INCORPORATED		RURAL		URBAN	
			RDWY. MI.	BR. MI.	RDWY. MI.	BR. MI.	RDWY. MI.	BR. MI.	RDWY. MI.	BR. MI.
1921	1924	16.21	4.63	0.02	1.56	0.00	15.36	0.02	0.81	0.00
1925	1935	16.09	4.63	0.07	1.44	0.00	15.36	0.02	0.69	0.00
1940	1940	16.10	4.64	0.01	1.45	0.00	15.20	0.01	0.69	0.00
1941		15.95	4.58	0.00	1.37	0.00	15.34	0.00	0.61	0.00

REMARKS: Layout is to scale as of 1925. Plan revised for 1941 relocation.  
(1) This work not done under this project number but lies within the limits of this project. (2) 60' wide sta. 449+11 to sta. 463+00 (in Dumont) and sta. 711+87 to sta. 719+60 (in Collis)





