

New Software Format Notes

Beginning in April, 2010, all new or updated Mn/DOT-OLM software will be delivered via a new installer, and only Windows XP or newer Windows operating systems will be fully supported. Once installed the new programs will store configuration files and/or output files differently from previous versions. If there is a previous version on the computer, please copy any personal files stored in the installation directory and uninstall the old version before installing the new version.

Due to varying IT policies for granting **WRITE** access to users, configuration files and/or output files from Mn/DOT-OLM software will be stored in a data folder to which each user can read or write without restriction. In Windows XP the folder is:

C:\Documents and Settings\{username}\Application Data\MnAppsData\.

In Windows Vista or Windows 7 the folder is:

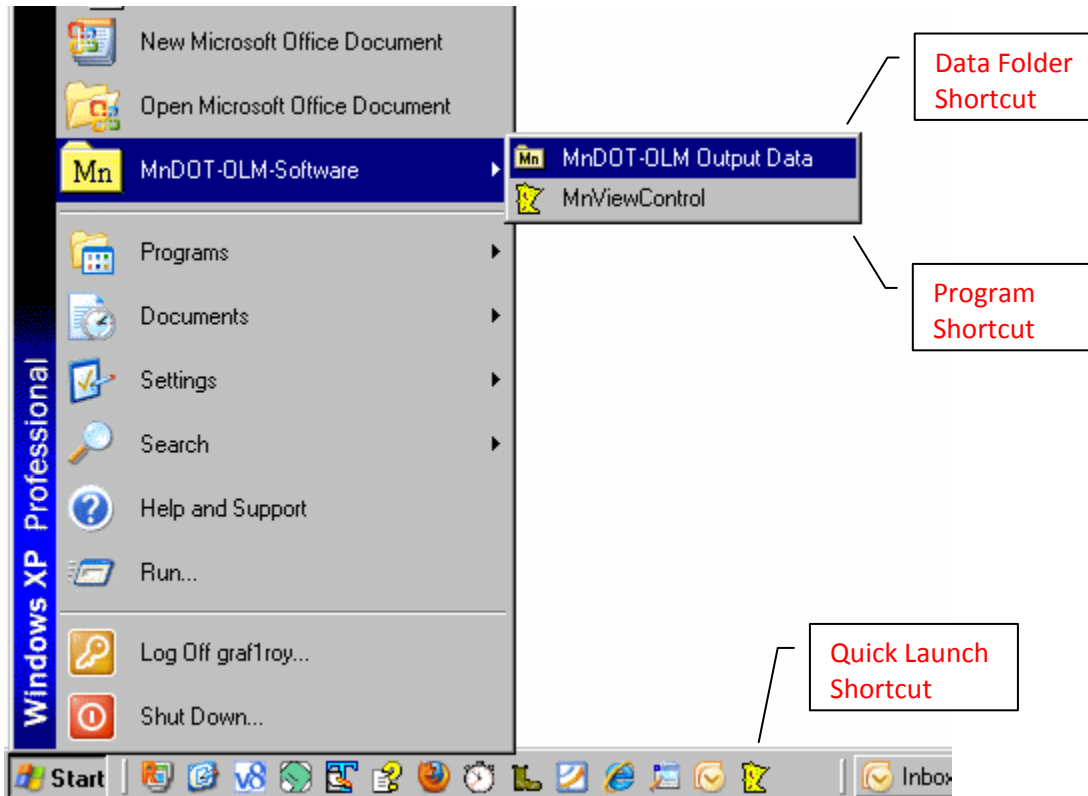
C:\Users\{username}\AppData\Roaming\MnAppsData\.

The new installer is much smaller because it assumes certain files are already installed. Operating systems previous to Windows XP may require installation of an additional package or may not work at all.

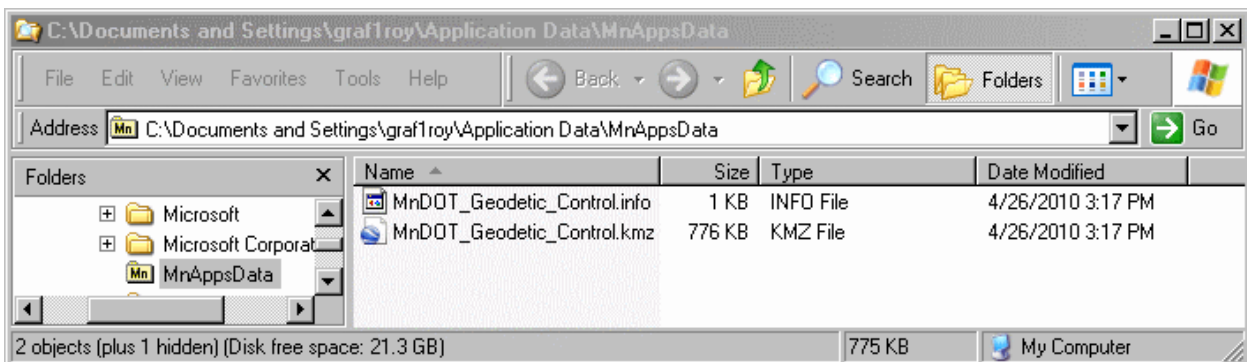
The default installation path is **C:\Program Files(x86)\MnDOT-OLM-Software\{program name}\.** Shortcuts for the program and for the data folder will be placed in **Start Menu\MnDOT-OLM Software** or **Start Menu\Programs\MnDOT-OLM Software\.** If neither location exists, the user must choose one of them.

Optionally the installer can add a desktop shortcut for the program, a quick launch shortcut for the program, or a desktop shortcut for the data folder. Note that shortcuts created by the installer will be available for all users. The program shortcuts will link to the common program location, and the data folder shortcut will link to the current user's private data folder.

The shortcut folder shown on the start menu. It can also be located in the 'Programs' folder.



The 'MnDOT-OLM Output Data' folder for graf1roy. Each user has a different folder for storage.



The C:\Program Files(x86)\ folder.

