



PROJECT PURPOSE and NEED

- **Improve Safety and Operational Efficiency**
- **Replace Decaying Bridges Built In the 1930s and 1960s**
- **Area Floods Multiple Times Seasonally**
 - 100 yr. flood elev. 470.8ft
 - Current bridge elevations 465.5ft

IDENTIFIED PROJECT REWARDS

- **TXDOT Provided ROW for Parks and Trails Use**
- **East / West Trail Connecting DART to Flagpole Hill**
- **North / South Grade Separated Trail Crossings**
- **WR Lake Gateway Marker Opportunity with Historical Information per the City of Dallas White Rock Lake Master Plan**

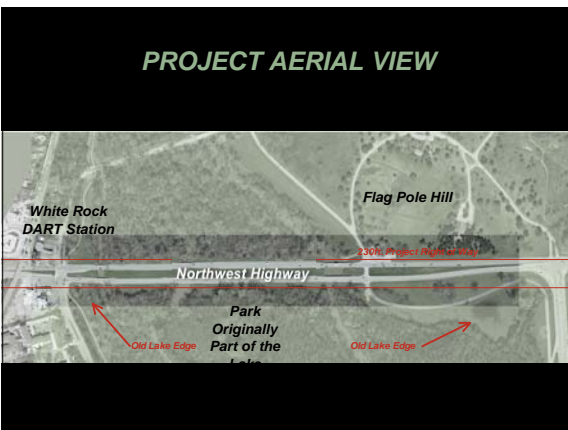
PROJECT FUNDING OVERVIEW

- Initially \$9 Million
- Now \$16.5 Million
- State of Texas 20%
- FHWA 80%

PROJECT LOCATION REGIONALLY



PROJECT AERIAL VIEW



PROJECT BACKGROUND

- 230 ft. right-of-way
- 3000 ft. long
- 3 lanes in each direction existing
- 3 lanes in each direction to be replaced
- 3 creeks and 6 bridges
- 2 at-grade intersections
- Surrounded by park land

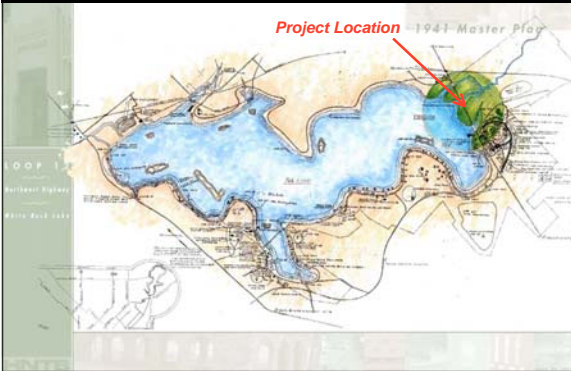
PROJECT BACKGROUND

- **Public Involvement**
 - **Advisory Panel Members**
 - Ecologists
 - Designers
 - Parks Board Members
 - Parks Department Staff
 - Public Works Staff
 - Lake Advocates
 - Trails Experts
 - Neighborhood Assoc.



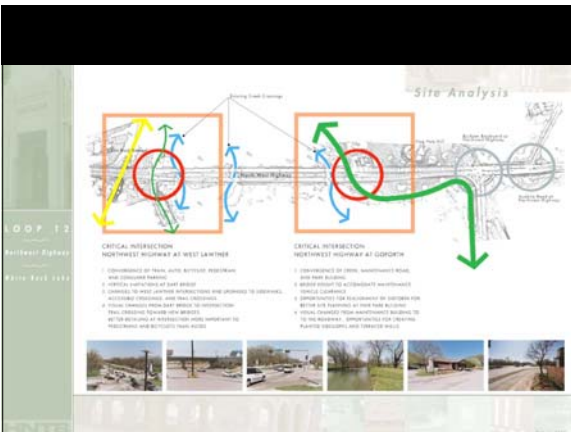
**SITE HISTORY
& ANALYSIS**

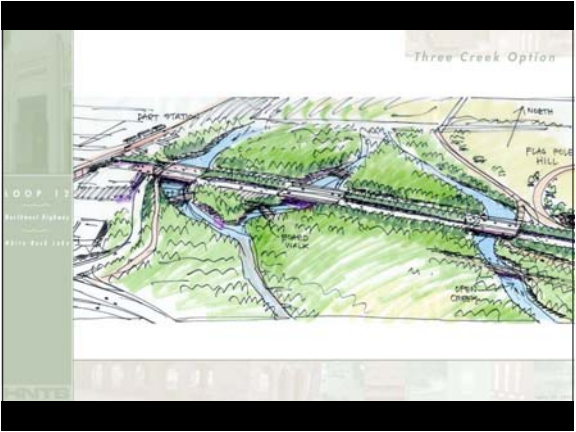
Lake Currently at 50% of It's Original Volume



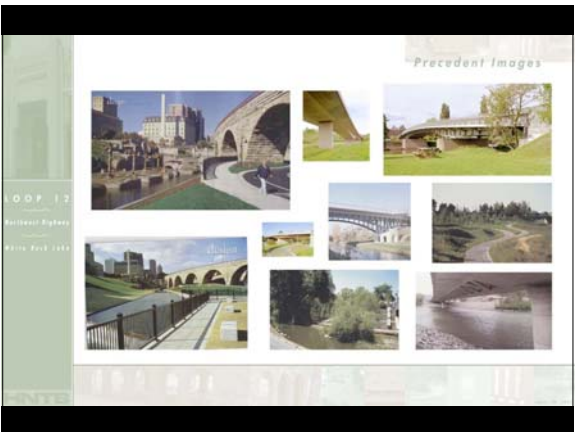
Neighborhood Association Map







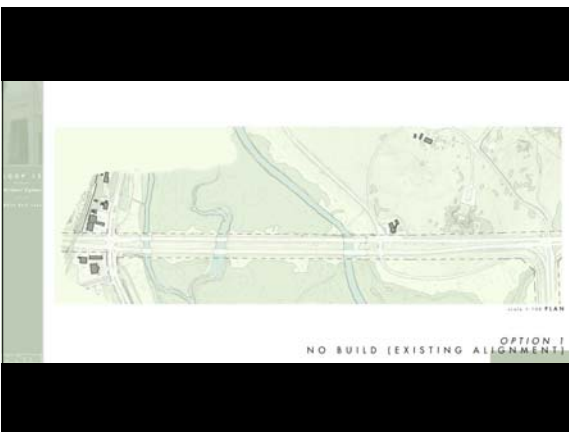


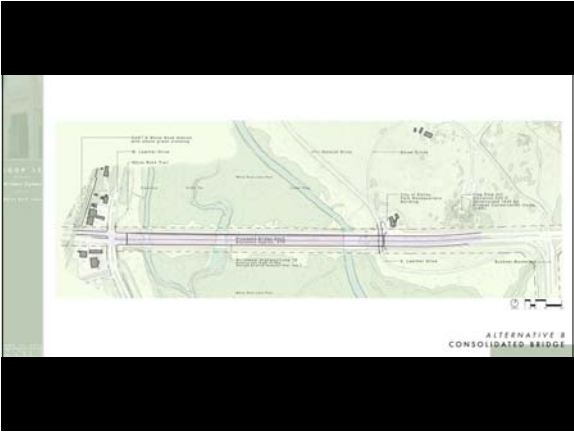


ROADWAY ALIGNMENT ALTERNATIVES

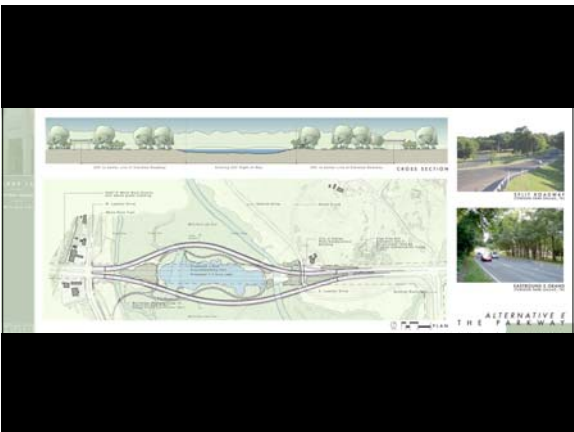
5 PRIMARY ALTERNATIVES STUDIED

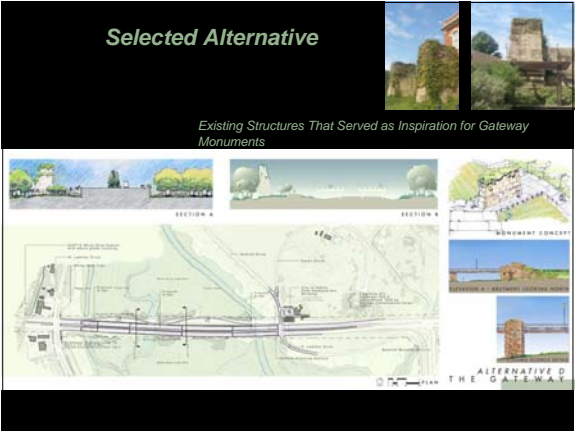
- *No Build*
- *Consolidated Bridge*
- *Boulevard*
- *Split Parkway*
- *Gateway*
 - *With Reflecting Pool and Monuments*
 - *With Reflecting Pool and Sculpture Garden*
 - *With Monuments and Fountains*
 - *With Monuments and Planting*





















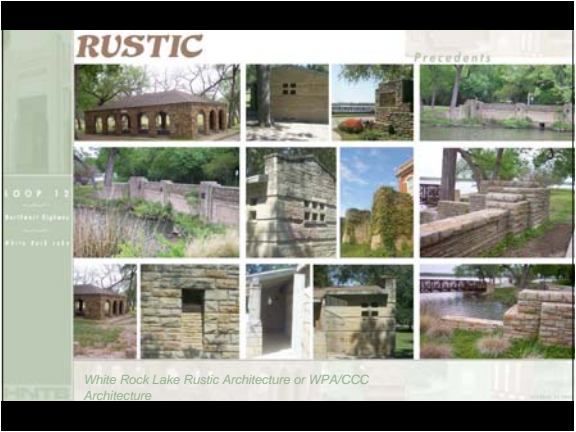


Gateway Marker Design Options	Options/Benefits Matrix	
	Added Benefits of each Option	
A Gateway Marker 		No Water Use No Vegetation Aesthetic Up Lighting Interpretive Monument Inscriptions
B Planted Gateway Marker 		Low Water Use, Irrigation Only Reduced Vandalism (Vegetation) Aesthetic Up Lighting Interpretive Monument Inscriptions Added Aesthetic Value
C Cascading Fountain Gateway Marker 		No Irrigation Reduced Vandalism (Water Feature) Dynamic Lighting (Most Dramatic) Acoustic Value Interpretive Monument Inscriptions Greatest Aesthetic Value

BRIDGE DESIGN PROCESS

Three Architectural Design Alternatives

1. Rustic
2. Art Deco
3. Contemporary

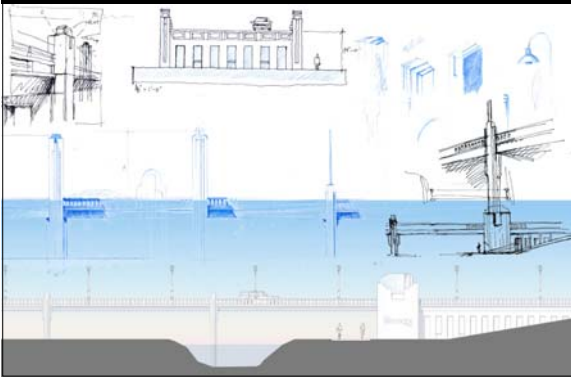


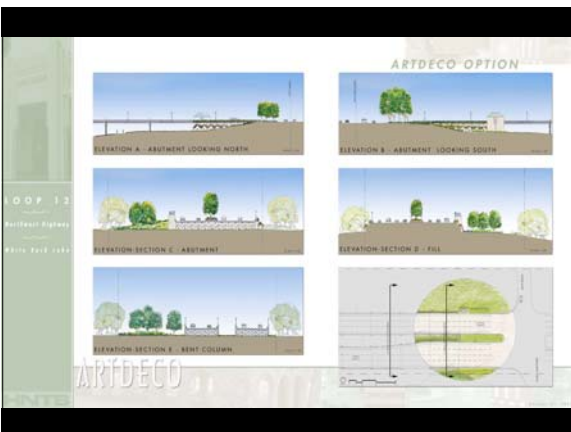




BRIDGE DESIGN CONCEPTS

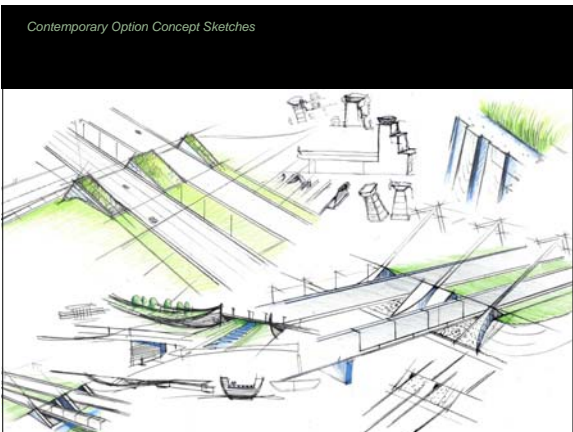
Art Deco Option Concept Sketches

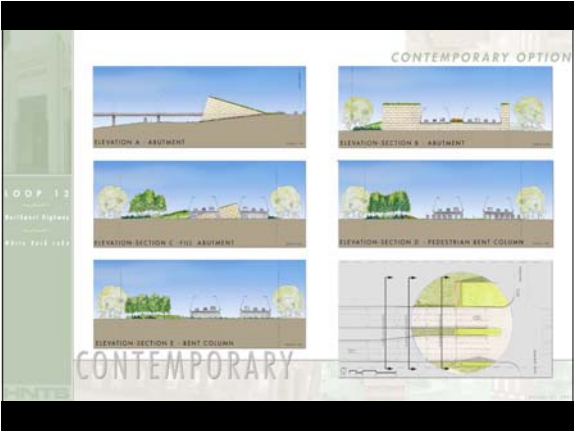








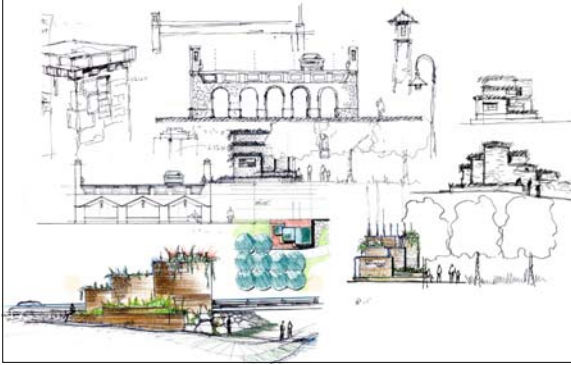


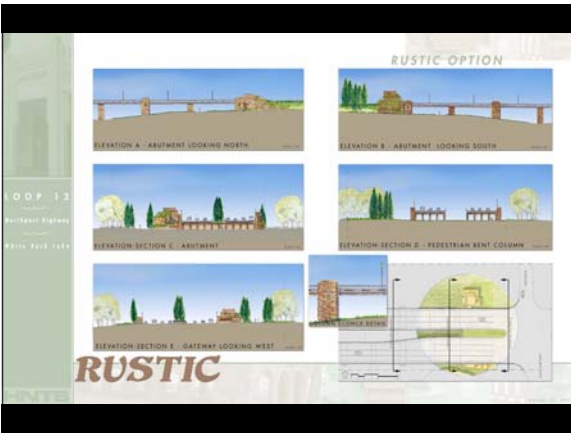






Rustic Option Concept Sketches





Plan and Elevations of Proposed Alignment



Photo-Simulation of Proposed Bridge



Evening Shot



Sketch View of Proposed Bridge



Rustic Option

Sketch View of Proposed Bridge & Trail



ONGOING EVENTS

- **May 17th 2005 Public Hearing**
 - 202 people attended
 - Still controversial
 - Still expecting great things !
- **August 31st 2005 Meeting with Congressman Pete Sessions**
 - Project Overview

LOOP 12 - URBAN DESIGN & THE PUBLIC PROCESS
Environmental Assessment

Mark Mathews, ASLA – HNTB
Texas Director of
Context Sensitive Solutions

Dallas, Texas
U.S. Department of Transportation
Federal Highway Administration
Texas Department of Transportation

HNTB
